



Fall & Associates

Stake and Elevation Service

P.O. Box 222

Pretty Prairie, KS. 67570

785-243-7506

Date 11-11-19

Invoice Number 1110191

GREAT PLAINS ENERGY

11

Sauvage

Operator

Number

Farm Name

Decatur-KS

26

4s

30w

550'FSL 900'FEL

County-State

S

T

R

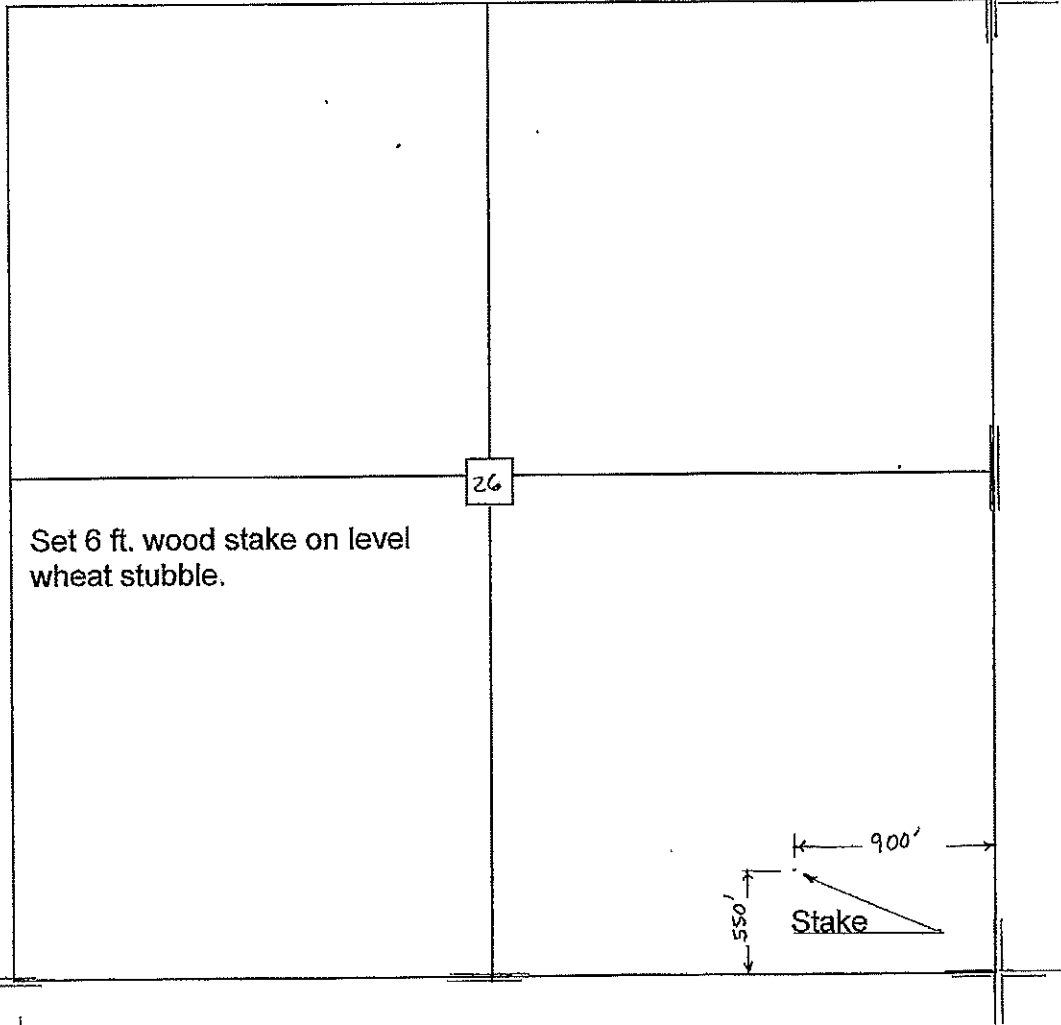
Location

Great Plains Energy
6121 S 58th Street
Suite B
Lincoln, NE 68516

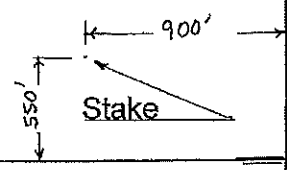
Elevation 2839 Gr.

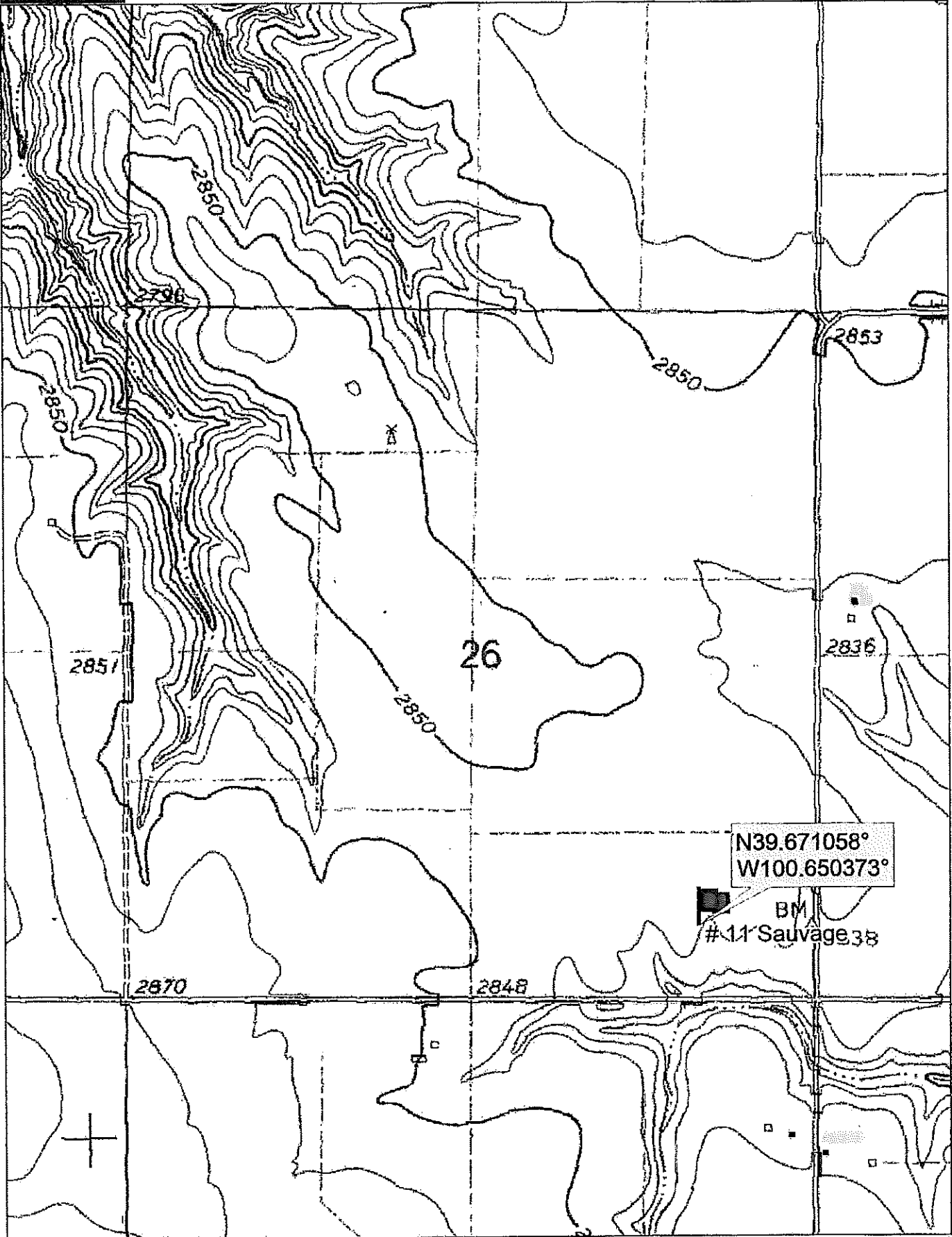
Ordered By: Dan

Scale 1"=1000'



Set 6 ft. wood stake on level wheat stubble.





Data use subject to license.
© DeLorme. Topo North America™ 9.
www.delorme.com

TH
MN (8.4"E)

