

Roger L. Moses

P.O. Box 385
Hays, Kansas 67601
Email: mosesoil@reagan.com
Phone: 785.656.1729

GEOLOGI
REPORT
LOG

API: 15-009-26260-00-00

COMPANY **K-Bar Oil**
McPherson, Kansas
WELL **Krehbiel #1**
FIELD **Rick**



LOCATION **SW-SE-NW-NW**
SEC. **13** TWP. **19S** RGE. **11W**
COUNTY **Barton**
STATE **Kansas**

PRODUCTION **Oil**
ELEVATION **KB 1784**
DF
GL 1777
Drilling Measured From: **Kelly Bushi**

OPERATOR **K-Bar Oil**
CONTRACTOR **Skytop Drilling LLC**
COMM: _____ COMP: _____

Samples Saved From **2800'** To: **T.D.**
Drilling Time From **2800'** To: **T.D.**
Samples Examined From **2800'** To: **T.D.**
Geological Supervision From **2800'** To Total Dep
Wellsite Geologist **Roger Moses**
Electrical Surveys _____

CASING RECORD
SURF: **858 @ 326'** PROD: **5 1/2 @ 3441'**
TOTAL DEPTH DRILLERS: **3443'**
TOTAL DEPTH LOG: **3442'**

DIL, Porosity
Micro,
Pioneer Energy Services

FORMATION TOPS AND STRUCTURAL POSITION

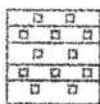
FORMATION	SAMPLE TOP	ELECTRIC LOG TOP	SUB-SEA DATUM	STRUCTUR. POSITION
Anhydrite		550 (+1254)	+1254	+1
B/Anhydrite		550 (+1232)	+1232	+1
Heebner	2912 (-1128)	2912	-1128	-1
Brown ls	3029 (-1245)	3029	-1245	Even
Lansing	3054 (-1270)	3054	-1270	-1
B/KC	3304 (-1520)	3302	-1518	-3
Arbuckle	3345 (-1561)	3330	-1546	+14

REFERENCE WELL FOR STRUCTURE **Lakin-Engelhardt #1-13,**
4135 FSL & 4555 FEL, Section 13-19S-11W, Barton County,
Kansas: Bird Dog Oil, LLC

LEGEND



Anhydrite



Salt



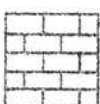
Sandstone



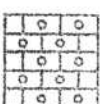
Shale



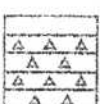
Carb sh



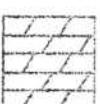
Limestone



Ool. Lime



Chert



Dolomite

DRILLING TIME IN MINUTES PER FOOT Rate of Penetration Decreases 	DEPTH	LITHOLOGY	SAMPLE DESCRIPTIONS	OIL SHOWS	REMARKS
	520				
	30	Anhydrite			Displace Mud System @ 2700'
	40	Anhydrite			
	50	Anhydrite Base			
	60	Anhydrite			
	2850	Queen Hill shale			Geologist on Location @ 2700'
	30	LS: wht-crm, m fld. chky, No, NS			
	40	SH: blk, carb.			
	50	LS: wht-tan, fn xln sl. Feas. barren			
	2850	Plattsburgh 2852			
	40	LS: crm/wht fn xln (-1068) inter xln, chky			
	50	LS: crm/wht fn xln, dns. poor inter xln, No NS			
	2900				WT 8.6

SH: blk carb, blk

SH: gry/red, blk, dense

Toronto LS.
Lt grey, vfxln, no vis of
barren.

2950

SH: gry-dk gry, fissile/blk
silty



3000

SH: s a/a, pcs fess

Brown Limestone

3029 (-1245)

LS: gry-tan, fxl, dense
foss, sil vuggy, v sil odor
SFO, uneven stain

LS: gry-tan, fxl, asphaltine
SH: lt gry-gry, blk, dns

3050

Lansing
3054 (-1270)

LS: lt gry-tan, wht fxl,
med. fxl, xln, gas
No. 2. D.I., uneven stain

LS: crm-wht fxl, dns
int xln, lt fxl odor
lt uneven stain

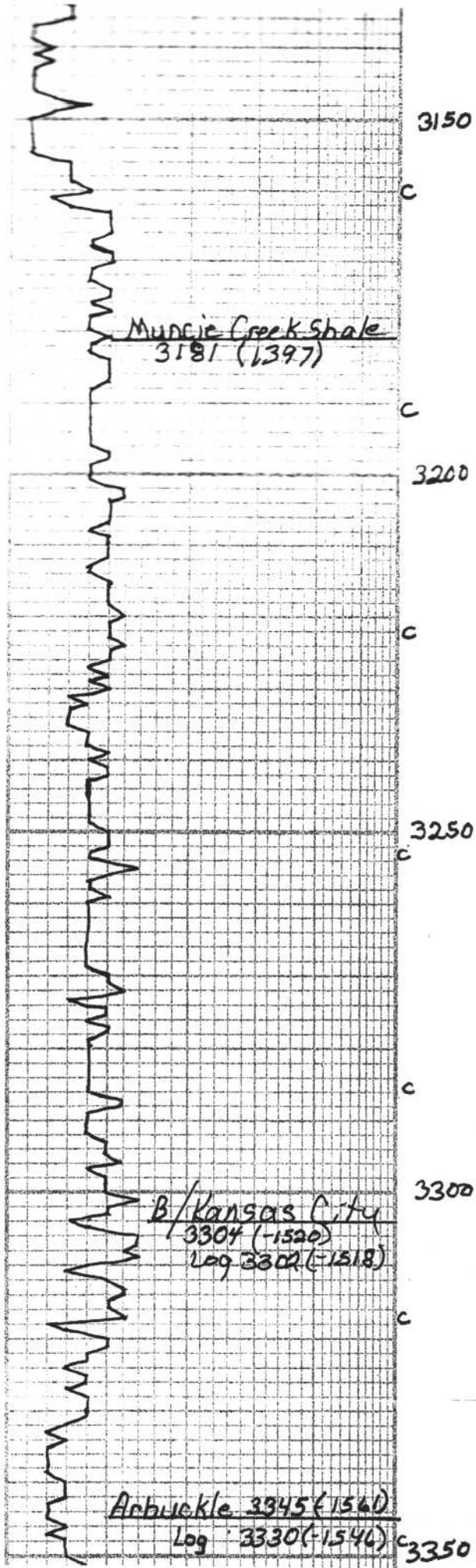
SH: gry, blk, silty
LS: wht-gry, por fxl,
lt-st odor, Asphaltine

SH: gry-red-blk, blk
silty

3100

LS: gry-dk gry, fmed xln,
foss, v sil odor, barren.

WT 8.8
Vis 57
LCM 1



SH: gry - lt gry, blk

3150

LS: CRM-tan, fn xln, int xln
v. sl. odor, n.s.

LS: s a/a no sh + str

SH: blk, carb, blk, dns
LS: gry - CRM, f. med xln, m Hld,
dom Ø, v. lgy, Ø Abun Fet
Lt odor, Lt Heaven str.

3200

LS: gry - CRM,

LS: gry - wht, f. med xln, m Hld,
dom Ø, Fet

LS: CRM - wht, very dns, fn xln
vuggy Fr-stone SI SFO

LS: gry - buff, f. med xln, dense
Ft odor, Very lt stain

SH: blk, carb, few pos red.

3250

SH: dk gry, blk, Fet

LS: tan, f. med xln, dns.
vuggy - poor int xln Ø, no
NS

LS: tan - lt gry, f. med xln,
poor int xln Ø, foss
NO, NSO.

Poor Quality Samples
3270

SH: blk, carb, blk
LS: CRM - wht, f. xln, dns,
poor int xln Ø No, NSO

3300

SH: gry - blk w/ interbedded
Limestone: CRM, Lt tan
f. xln.

SH: gry - dk gry, blk
interbedded,

LS: wht - buff, f. med xln,
PPP - vuggy, few int parts
very st. odor, sl. sh oil

3350

Dolo: wht - CRM, fn xln, dns.
SUCROSLIC PPP - vuggy
very few rhombic xls

Pump Problems
Air in Pump

WT 8.8
Vis 49

WT 8.8
Vis 47
LCM 1
Poor Quality
Samples

