

GEOLOGICAL REPORT

C & G Drilling, Inc.

Busenitz #14-1

SE SE NW SE Section 14-124S-R4E

Butler County, Kansas

COMMENCED: 06-03-19
 COMPLETED: 06-06-19
 CONTRACTOR: C & G Drilling Co.
 SIZE OF HOLE: 7 7/8"
 SURFACE PIPE: 8 5/8"
 CEMENTED WITH: N/A

STATUS: OIL
 A.P.I. #: 15-015-24124
 OPERATOR LIC.: 32701
 FIELD: Plum Grove NW
 ELEVATION: 1411 K.B.
 LOGS: None

MUD SYSTEM: Chemick
 OTHER:
 CEMENTED WITH: N/A
 LONG STRING: 5 1/2"
 R.T.D.: 2730'

William M. Stout
 Geologist

Handwritten notes and signatures

FORMATION TOPS
 1402 G.L. 1411 K.B.

Formation	Sample
Kansas City	2083-672
Base Kansas City	2228-817
Altamont	2344-933
Cherokee	2434-1021
Mississippi Chert	2463-1052
Mississippi Lime	2518-1107
Hunterhook	2552-1141
Hunton	2650-1239
Viola	2712-1301
Total Depth	2730-1319

SAMPLE DESCRIPTIONS

Kansas City 2083' (-672)
 2118' - 2124'
 Limestone - light brown, fine crystalline, few fossils, faint odor, scattered light stain, few spots free oil, intercrystalline porosity, scattered fluorescence.

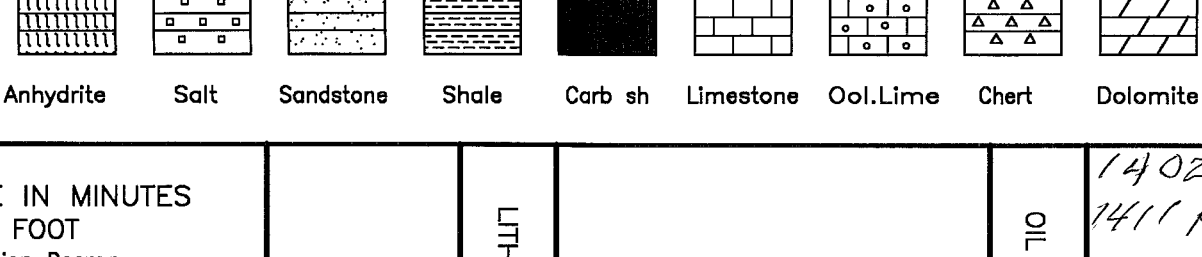
2198' - 2204'
 Limestone - light brown, fine crystalline, few fossils, faint odor, trace light stain, trace free oil, intercrystalline porosity, trace fluorescence.

Mississippi 2463' (-1052)
 2463' - 2495'
 Chert - off white, some amber, opaque to translucent, trace weathered, fair odor, scattered light stain, show free oil with few gas bubbles, scattered vugular and pin point porosity with fluorescence (up to 15%).

CONCLUSIONS

Decision was made to set and cement casing to further evaluate the Mississippian through perforations.

LEGEND



DEPTH	LITHOLOGY	SAMPLE DESCRIPTIONS	OIL SHOWS	REMARKS	
				1402 G.L.	1411 K.B.
2118		5N-6, M-Gy			
2124		5N-8A			
2198		5N-6, DR, Gy w/LS. Ben. L. Ben. F-X Fos. DNS N.S. NUB.			KANSAS CITY 2083 (-672)
2200		5N-6, DR, Gy w/LS. Ben. L. Ben. F-X Fos. DNS N.S. NUB.			
2204		5N-6, DR, Gy w/LS. Ben. L. Ben. F-X Fos. DNS N.S. NUB.			
2208		5N-6, DR, Gy w/LS. Ben. L. Ben. F-X Fos. DNS N.S. NUB.			
2212		5N-6, DR, Gy w/LS. Ben. L. Ben. F-X Fos. DNS N.S. NUB.			
2216		5N-6, DR, Gy w/LS. Ben. L. Ben. F-X Fos. DNS N.S. NUB.			
2220		5N-6, DR, Gy w/LS. Ben. L. Ben. F-X Fos. DNS N.S. NUB.			
2224		5N-6, DR, Gy w/LS. Ben. L. Ben. F-X Fos. DNS N.S. NUB.			
2228		5N-6, DR, Gy w/LS. Ben. L. Ben. F-X Fos. DNS N.S. NUB.			
2232		5N-6, DR, Gy w/LS. Ben. L. Ben. F-X Fos. DNS N.S. NUB.			
2298		5N-6, DR, Gy w/LS. Ben. L. Ben. F-X Fos. DNS N.S. NUB.			PRC 2228 (-817)
2300		5N-6, DR, Gy w/LS. Ben. L. Ben. F-X Fos. DNS N.S. NUB.			
2304		5N-6, DR, Gy w/LS. Ben. L. Ben. F-X Fos. DNS N.S. NUB.			
2308		5N-6, DR, Gy w/LS. Ben. L. Ben. F-X Fos. DNS N.S. NUB.			
2312		5N-6, DR, Gy w/LS. Ben. L. Ben. F-X Fos. DNS N.S. NUB.			
2316		5N-6, DR, Gy w/LS. Ben. L. Ben. F-X Fos. DNS N.S. NUB.			MEMPHIS 2305 (-894)
2320		5N-6, DR, Gy w/LS. Ben. L. Ben. F-X Fos. DNS N.S. NUB.			
2324		5N-6, DR, Gy w/LS. Ben. L. Ben. F-X Fos. DNS N.S. NUB.			
2328		5N-6, DR, Gy w/LS. Ben. L. Ben. F-X Fos. DNS N.S. NUB.			
2332		5N-6, DR, Gy w/LS. Ben. L. Ben. F-X Fos. DNS N.S. NUB.			ALAMONT 2344 (-933)
2336		5N-6, DR, Gy w/LS. Ben. L. Ben. F-X Fos. DNS N.S. NUB.			
2340		5N-6, DR, Gy w/LS. Ben. L. Ben. F-X Fos. DNS N.S. NUB.			
2344		5N-6, DR, Gy w/LS. Ben. L. Ben. F-X Fos. DNS N.S. NUB.			CHEROKEE 2434 (-1021)
2348		5N-6, DR, Gy w/LS. Ben. L. Ben. F-X Fos. DNS N.S. NUB.			
2352		5N-6, DR, Gy w/LS. Ben. L. Ben. F-X Fos. DNS N.S. NUB.			
2356		5N-6, DR, Gy w/LS. Ben. L. Ben. F-X Fos. DNS N.S. NUB.			
2360		5N-6, DR, Gy w/LS. Ben. L. Ben. F-X Fos. DNS N.S. NUB.			
2364		5N-6, DR, Gy w/LS. Ben. L. Ben. F-X Fos. DNS N.S. NUB.			
2368		5N-6, DR, Gy w/LS. Ben. L. Ben. F-X Fos. DNS N.S. NUB.			VIOLA 2712 (-1301)
2372		5N-6, DR, Gy w/LS. Ben. L. Ben. F-X Fos. DNS N.S. NUB.			
2376		5N-6, DR, Gy w/LS. Ben. L. Ben. F-X Fos. DNS N.S. NUB.			R.T.D. 2730 (-1319)
2380		5N-6, DR, Gy w/LS. Ben. L. Ben. F-X Fos. DNS N.S. NUB.			