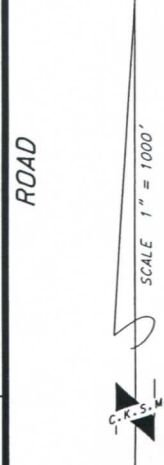
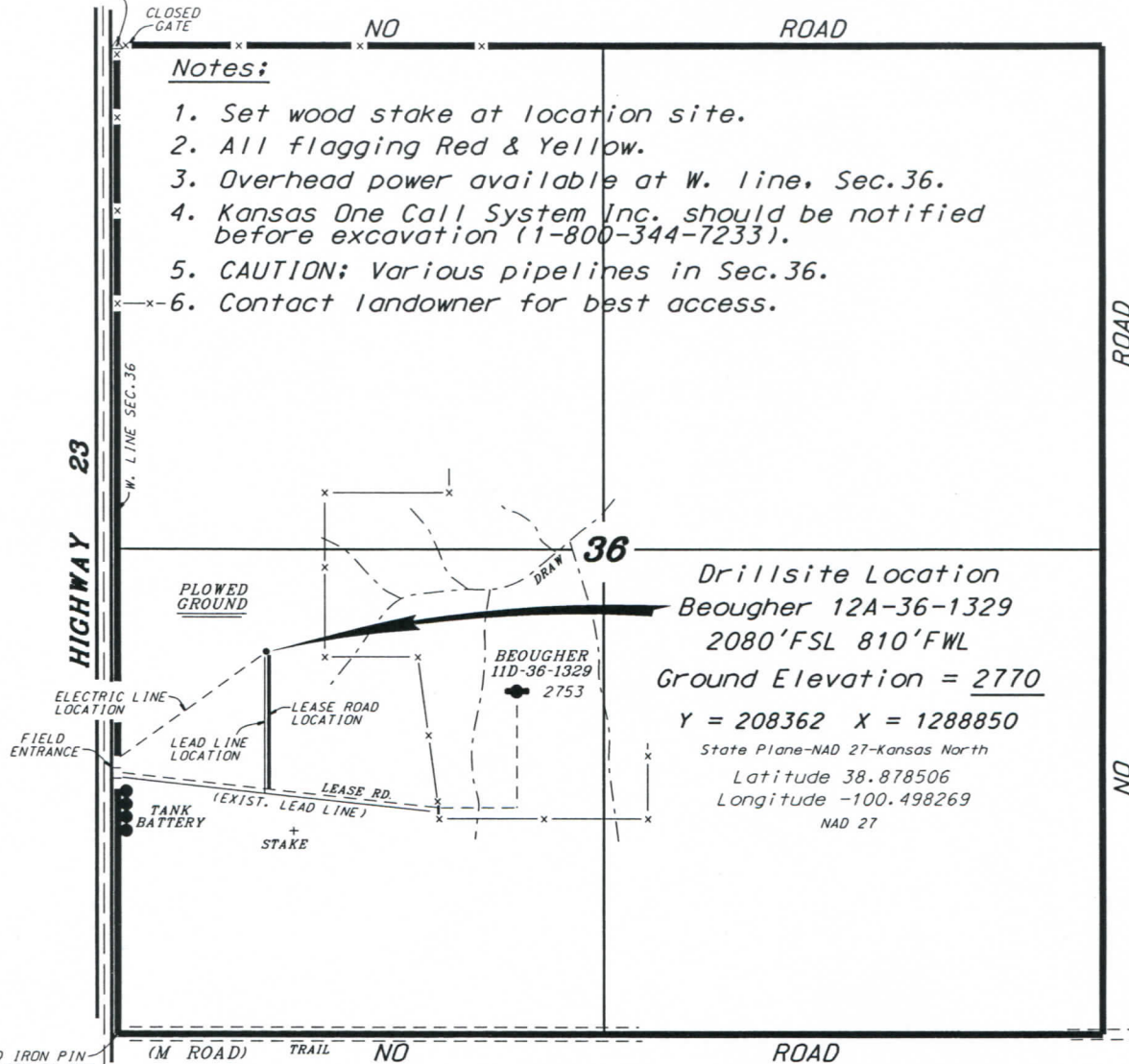


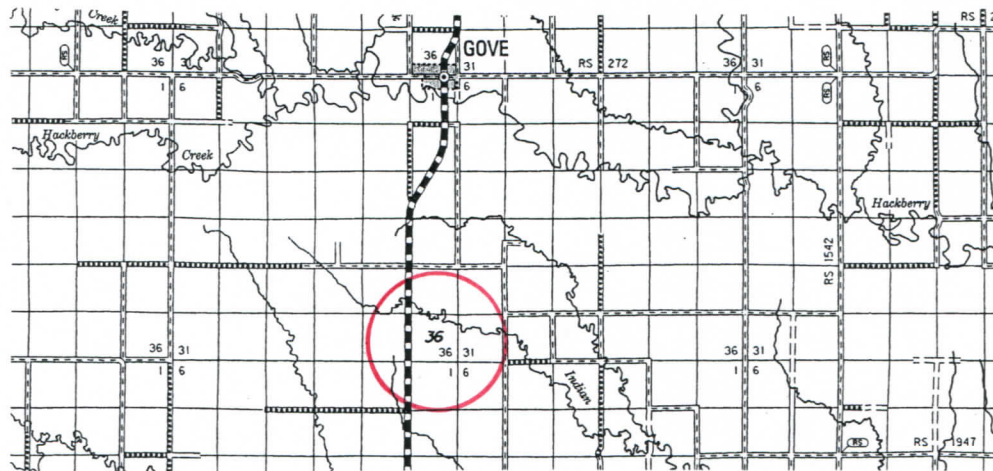
**US OIL RESOURCES, LLC  
 BEOUGHER LEASE  
 SW.1/4, SECTION 36, T13S, R29W  
 GOVE COUNTY, KANSAS**

FOUND CAPPED IRON PIN  
 AT NW. COR. SEC. 36 PER  
 K.D.O.T. REFERENCES  
 Y = 211569 X = 1288155

\*Ingress and egress to location as shown on this  
 plat is for usage only and may not be legally  
 opened for public use. Contact landowner,  
 tenant and county road department for access.



FOUND CAPPED IRON PIN  
 AT SW. COR. SEC. 36 PER  
 K.D.O.T. REFERENCES  
 (22.5'E. OF CENTERLINE  
 HIGHWAY 23)  
 Y = 206331 X = 1287965



\* Controlling data is based upon the best maps and photographs available to us and upon a regular section of land containing 640 acres.  
 \* Approximate section lines were determined using the normal standard of care of oilfield surveyors practicing in the state of Kansas. The section corners, which establish the precise section lines, were not necessarily located, and the exact location of the drillsite location in the section is not guaranteed. Therefore, the operator securing this service and accepting this plat and all other parties relying thereon agree to hold Central Kansas Oilfield Services, Inc., its officers and employees harmless from all losses, costs and expenses and said entities released from any liability from incidental or consequential damages.  
 \* Elevations derived from National Geodetic Vertical Datum.

Date April 9, 2019