

AUSTIN B. KLAUS

Cell 785.650.3629
Work 785.483.3145
Ext 225

PO BOX 352
Russell, KS 67665
austin.klaus@johnofarmer.com

Scale 1:240 (5"=100') Imperial
Measured Depth Log

Well Name: Stahl #2-30
Location: Rooks County
License Number: API #15-163-24392-00-00
Spud Date: 5/17/2019
Surface Coordinates: Section 30, Township 9 South, Range 19 West
330' FNL & 2,310' FEL
Bottom Hole Coordinates: Vertical well w/ minimal deviation, same as above
Ground Elevation (ft): 2,144
Logged Interval (ft): 3,000 To: RTD
Formation: LKC-Arbuckle
Type of Drilling Fluid: Chemical (K.D.T)

Region: Kansas
Drilling Completed: 5/21/2019
K.B. Elevation (ft): 2,149
Total Depth (ft): 3,700

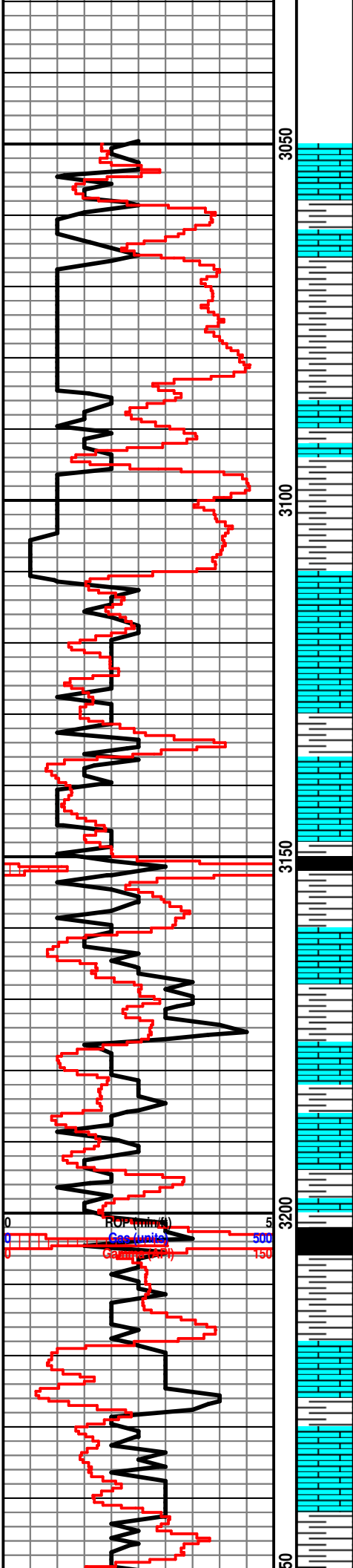
Printed by STRIP.LOG from WellSight Systems 1-800-447-1534 www.WellSight.com

OPERATOR

Company: Patterson Energy, LLC
Address: P.O. Box 400
Hays, KS 67601

GEOLOGIST

Name: Austin Klaus
Company: John O. Farmer, Inc.
Address: 370 W. Wichita Ave.
Russell, KS 67665



Sh: lt-drk gry

Sh: lt gry, scat slt

Topeka 3110' (-961)

Ls: off wh-tan, fn xln, scat int xln & vuggy porosity, NSFO, no odor

Ls: ala

Ls: off wh-tan, vry fn-fn xln, poor-fair int xln porosity, scat dead oil stn, VSSFO, sl odor

Sh: lt-drk gry

Ls: tan-gry, fn-sub xln, scat foss, mostly DNS, NSFO

Ls: tan-lt gry, fn xln, scat foss, scat int xln porosity, NSFO

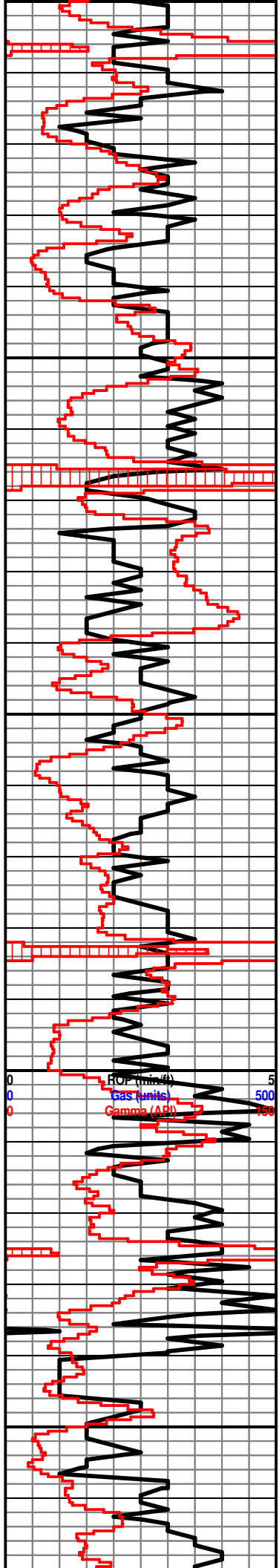
Ls: tan-gry, fn-sub xln, mostly DNS, NSFO

Sh: drk gry-blk

Ls: tan-gry, fn xln, scat foss, poor int foss porosity, NSFO

Ls: tan-gry, fn-vry fn xln, scat int xln porosity, scat dead oil stn

Wt: 8.8
Vis: 70



Sh: drk gry-blk

Ls: tan-gry, fn xln, scat foss, poor-fair int xln & int foss porosity, scat dead oil stn, lt odor

Ls: off wh-tan, fn xln, scat int xln porosity, scat oil stn, sl odor

Sh: lt-drk gry

Ls: tan-gry, fn-sub xln, mostly DNS

Heebner 3315' (-1166)

Sh: blk, carb, fissile

Sh: lt-drk gry

Ls: off wh-tan, fn xln, scat foss, poor int foss porosity, few rxns w/ fair oil stn, vry lt odor

Lansing 3355' (-1206)

Ls: off wh-tan, fn xln, foss, poor-fair int foss & scat int xln porosity, scat oil stn in porosity, lt odor

Sh: lt-drk gry, scat brn

Ls: off wh-tan, fn xln, mostly DNS, scat chert-off wh

Sh: drk gry-brn

Ls: off wh-tan, fn xln, foss, scat fair int foss porosity, scat pp vuggy porosity, fair oil stn in porosity, VSSFO, lt odor

Sh: lt-drk gry

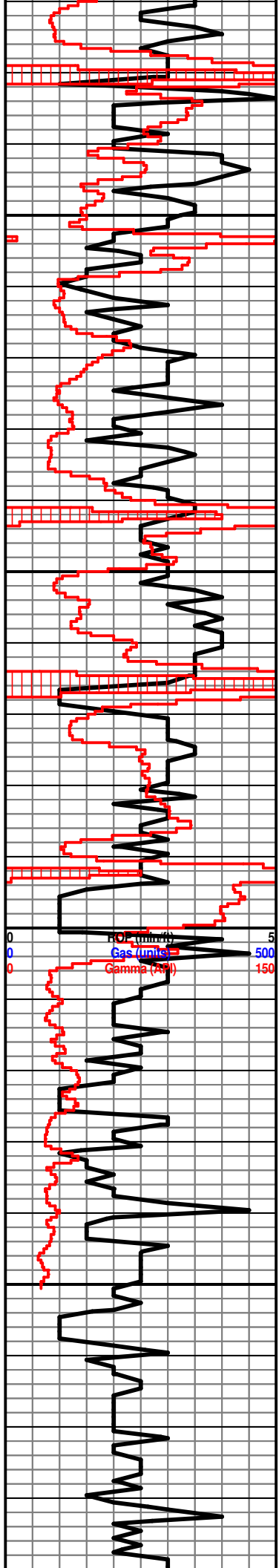
Ls: off wh-tan, fn xln, mostly DNS, NSFO, scat chert-off wh, scat chalk

Sh: lt-drk gry

Ls: off wh-tan, fn xln, foss, fair int foss & int xln porosity, fair oil stn, SSFO, sl-fair odor

Sh: lt-drk gry

Ls: off wh-tan, fn xln, poor-fair int xln & scat vuggy porosity, NSFO



Ls: off wh-tan, fn xln, mostly DNS, hvy chert-off wh

Sh: drk gry-blk

Sh: lt-drk gry, brn

Ls: off wh-tan, fn xln, scat foss, poor int xln & int foss porosity, scat oil stn in porosity, scat chert-off wh

Sh: lt-drk gry

Ls: off wh-tan, fn xln, poor int xln porosity, scat dead oil stn, scat chert-off wh

Sh: lt gry

Ls: off wh-tan, fn xln, poor-fair int xln porosity, scat fair oil stn in porosity, SSFO, fair odor

Sh: lt-drk gry, blk

Ls: off wh-tan, fn xln, foss, poor int xln & scat int foss porosity, scat fair oil stn in porosity, VSSFO, sl-fair odor

Sh: drk gry-blk

Ls: tan-gry, fn-sub xln, mostly DNS

B/KC 3575' (-1426)

Ls: tan-gry, fn-sub xln, mostly DNS, hvy chert-off wh

Sh: lt-drk gry

Arbuckle 3601' (-1452)

Dolo/Ls: off wh-tan, fn xln, poor int xln porosity

Dolo: off wh-tan-brn, fn-md xln, fair int xln porosity, fair-good oil sat, S-FSFO, fair-good odor

Dolo: off wh-tan-brn, fn-md xln, fair int xln, few rxes w/ good sucrosic xln porosity, fair-good oil sat, SSFO, fair-good odor

Dolo: off wh-tan, fn-md xln, fair-good int xln porosity, fair-good oil sat, FSFO, sl-fair odor

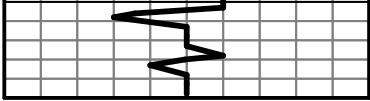
Dolo: off wh-tan, fn-md xln, poor-fair int xln porosity, sl res oil stn, VSSFO, sl-fair odor, scat chert-off wh

Dolo: off wh-tan, fn-md xln, poor int xln porosity, poor resid oil stn, sl odor

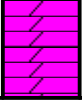
Dolo: off wh-tan-brn, fn-md xln, poor int xln porosity, hvy chert-off wh

Dolo: ala

Wt: 8.8
Vis: 50



100



ECG rate