



DRILL STEM TEST REPORT

Prepared For: **H&D Exploration, LLC**

PO Box 387
Hoisington, KS 67544

ATTN: Wyatt Urban

Steinle #2

30-14S-12W Russell,KS

Start Date: 2019.05.15 @ 22:48:35

End Date: 2019.05.16 @ 05:28:11

Job Ticket #: 65688 DST #: 1

Trilobite Testing, Inc
1515 Commerce Parkway Hays, KS 67601
ph: 785-625-4778 fax: 785-625-5620

Printed: 2019.05.20 @ 11:44:43

H&D Exploration, LLC
30-14S-12W Russell,KS
Steinle #2
DST # 1
Tarkio
2019.05.15



**TRILOBITE
TESTING, INC.**

DRILL STEM TEST REPORT

H&D Exploration, LLC
PO Box 387
Hoisington, KS 67544
ATTN: Wyatt Urban

30-14S-12W Russell, KS

Steinle #2

Job Ticket: 65688

DST#: 1

Test Start: 2019.05.15 @ 22:48:35

GENERAL INFORMATION:

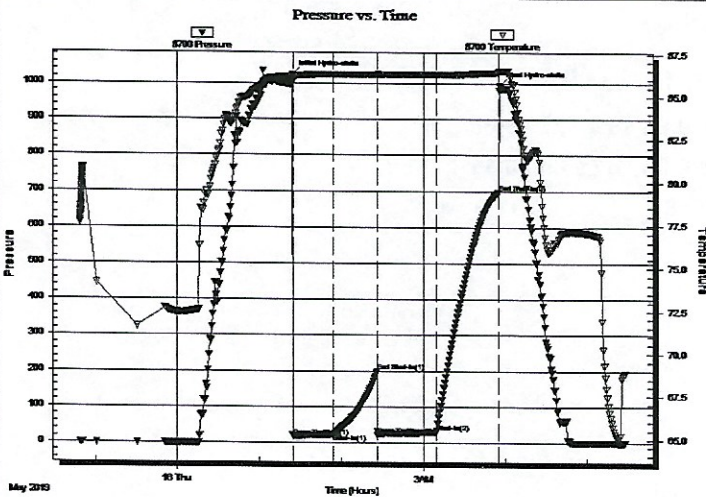
Formation: **Tarkio**
 Deviated: No Whipstock: ft (KB)
 Time Tool Opened: 01:24:56
 Time Test Ended: 05:28:11
 Interval: **2170.00 ft (KB) To 2230.00 ft (KB) (TVD)**
 Total Depth: 2230.00 ft (KB) (TVD)
 Hole Diameter: 7.88 inches Hole Condition: Fair
 Test Type: Conventional Bottom Hole (Initial)
 Tester: Brannan Lonsdale
 Unit No: 73
 Reference Elevations: 1677.00 ft (KB)
 1668.00 ft (CF)
 KB to GR/CF: 9.00 ft

Serial #: 8700

Outside

Press@RunDepth: 29.81 psig @ 2171.00 ft (KB) Capacity: 8000.00 psig
 Start Date: 2019.05.15 End Date: 2019.05.16 Last Calib.: 2019.05.16
 Start Time: 22:48:36 End Time: 05:28:11 Time On Btm: 2019.05.16 @ 01:24:26
 Time Off Btm: 2019.05.16 @ 03:55:41

TEST COMMENT: 30- IF- Slowly built to 8.61"
 30- IS- No blow
 45- FF- BOB 3 mins. Built to 80.80"
 45- FS- No blow



PRESSURE SUMMARY

Time (Min.)	Pressure (psig)	Temp (deg F)	Annotation
0	1024.78	86.20	Initial Hydro-static
1	17.44	86.02	Open To Flow (1)
30	23.14	86.29	Shut-In(1)
62	199.47	86.31	End Shut-In(1)
62	22.18	86.31	Open To Flow (2)
105	29.81	86.28	Shut-In(2)
151	696.33	86.42	End Shut-In(2)
152	994.56	86.52	Final Hydro-static

Recovery

Length (ft)	Description	Volume (bbl)
5.00	Mw / few oil spots	0.02

Gas Rates

	Choke (inches)	Pressure (psig)	Gas Rate (Mcf/d)



**TRILOBITE
TESTING, INC.**

DRILL STEM TEST REPORT

TOOL DIAGRAM

H&D Exploration, LLC
 PO Box 387
 Hoisington, KS 67544
 ATTN: Wyatt Urban

30-14S-12W Russell, KS
Steinle #2
 Job Ticket: 65688 **DST#: 1**
 Test Start: 2019.05.15 @ 22:48:35

Tool Information

Drill Pipe:	Length: 2065.00 ft	Diameter: 3.82 inches	Volume: 29.27 bbl	Tool Weight: 2000.00 lb
Heavy Wt. Pipe:	Length: ft	Diameter: inches	Volume: - bbl	Weight set on Packer: 25000.00 lb
Drill Collar:	Length: 114.00 ft	Diameter: 2.25 inches	Volume: 0.56 bbl	Weight to Pull Loose: 42000.00 lb
			<u>Total Volume: - bbl</u>	Tool Chased 0.00 ft
Drill Pipe Above KB:	29.00 ft			String Weight: Initial 30000.00 lb
Depth to Top Packer:	2170.00 ft			Final 32000.00 lb
Depth to Bottom Packer:	ft			
Interval between Packers:	60.00 ft			
Tool Length:	80.00 ft			
Number of Packers:	2	Diameter: 6.75 inches		

Tool Comments:

Tool Description	Length (ft)	Serial No.	Position	Depth (ft)	Accum. Lengths
Change Over Sub	1.00			2151.00	
Shut In Tool	5.00			2156.00	
Hydraulic tool	5.00			2161.00	
Packer	5.00			2166.00	20.00 Bottom Of Top Packer
Packer	4.00			2170.00	
Stubb	1.00			2171.00	
Recorder	0.00	6771	Inside	2171.00	
Recorder	0.00	8700	Outside	2171.00	
Perforations	22.00			2193.00	
Change Over Sub	1.00			2194.00	
Drill Pipe	32.00			2226.00	
Change Over Sub	1.00			2227.00	
Bullnose	3.00			2230.00	60.00 Bottom Packers & Anchor

Total Tool Length: 80.00



**TRILOBITE
TESTING, INC.**

DRILL STEM TEST REPORT

FLUID SUMMARY

H&D Exploration, LLC
PO Box 387
Hoisington, KS 67544
ATTN: Wyatt Urban

30-14S-12W Russell, KS
Steinle #2
Job Ticket: 65688 DST#: 1
Test Start: 2019.05.15 @ 22:48:35

Mud and Cushion Information

Mud Type: Gel Chem	Cushion Type:	Oil API:	deg API
Mud Weight: 8.00 lb/gal	Cushion Length: ft	Water Salinity:	ppm
Viscosity: 46.00 sec/qt	Cushion Volume: bbl		
Water Loss: 8.77 in ³	Gas Cushion Type:		
Resistivity: ohm.m	Gas Cushion Pressure: psig		
Salinity: 7500.00 ppm			
Filter Cake: inches			

Recovery Information

Recovery Table

Length ft	Description	Volume bbl
5.00	Mw / few oil spots	0.025

Total Length: 5.00 ft Total Volume: 0.025 bbl
Num Fluid Samples: 0 Num Gas Bombs: 0 Serial #:
Laboratory Name: Laboratory Location:
Recovery Comments:

Serial #: 8700

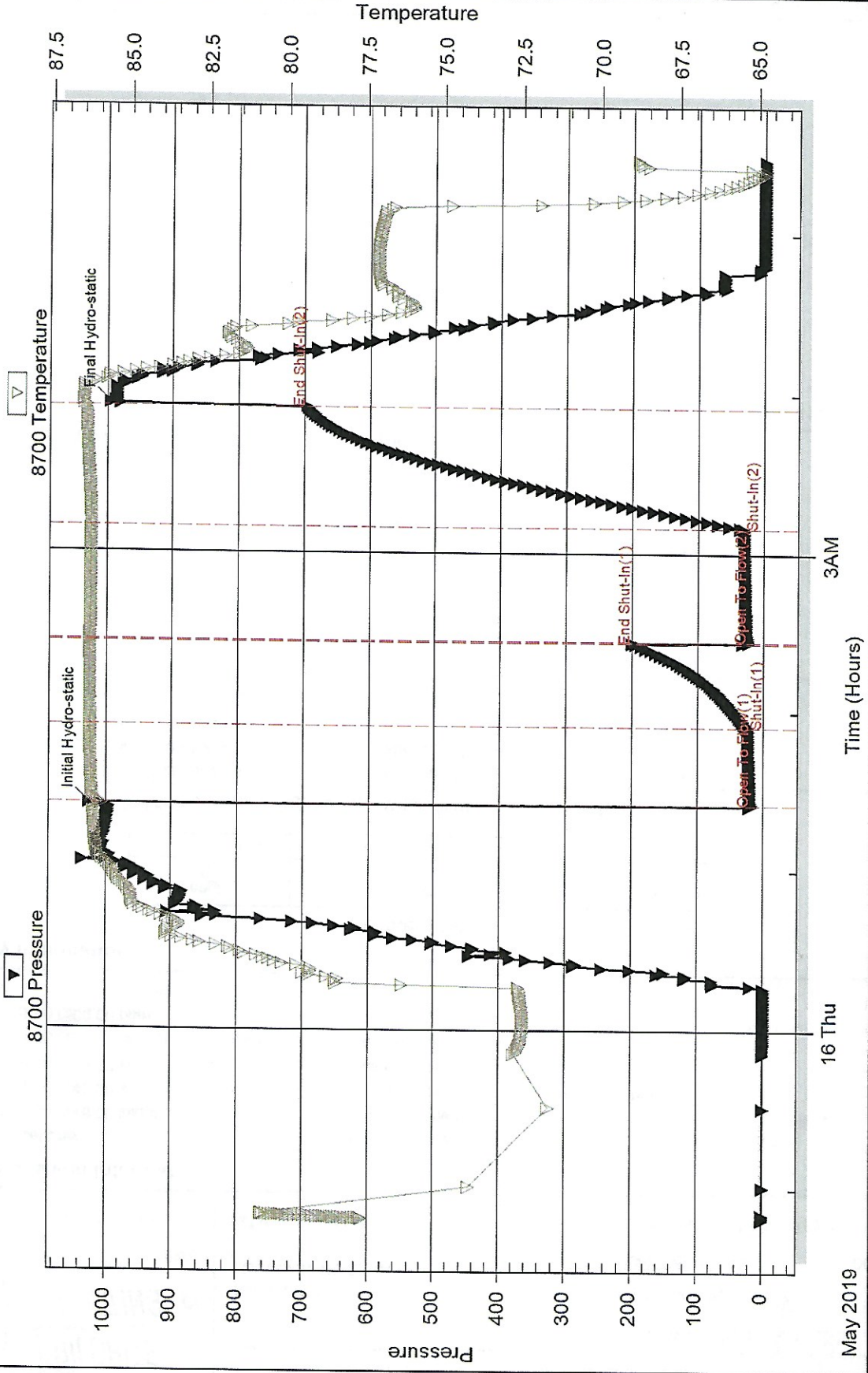
Outside

H&D Exploration, LLC

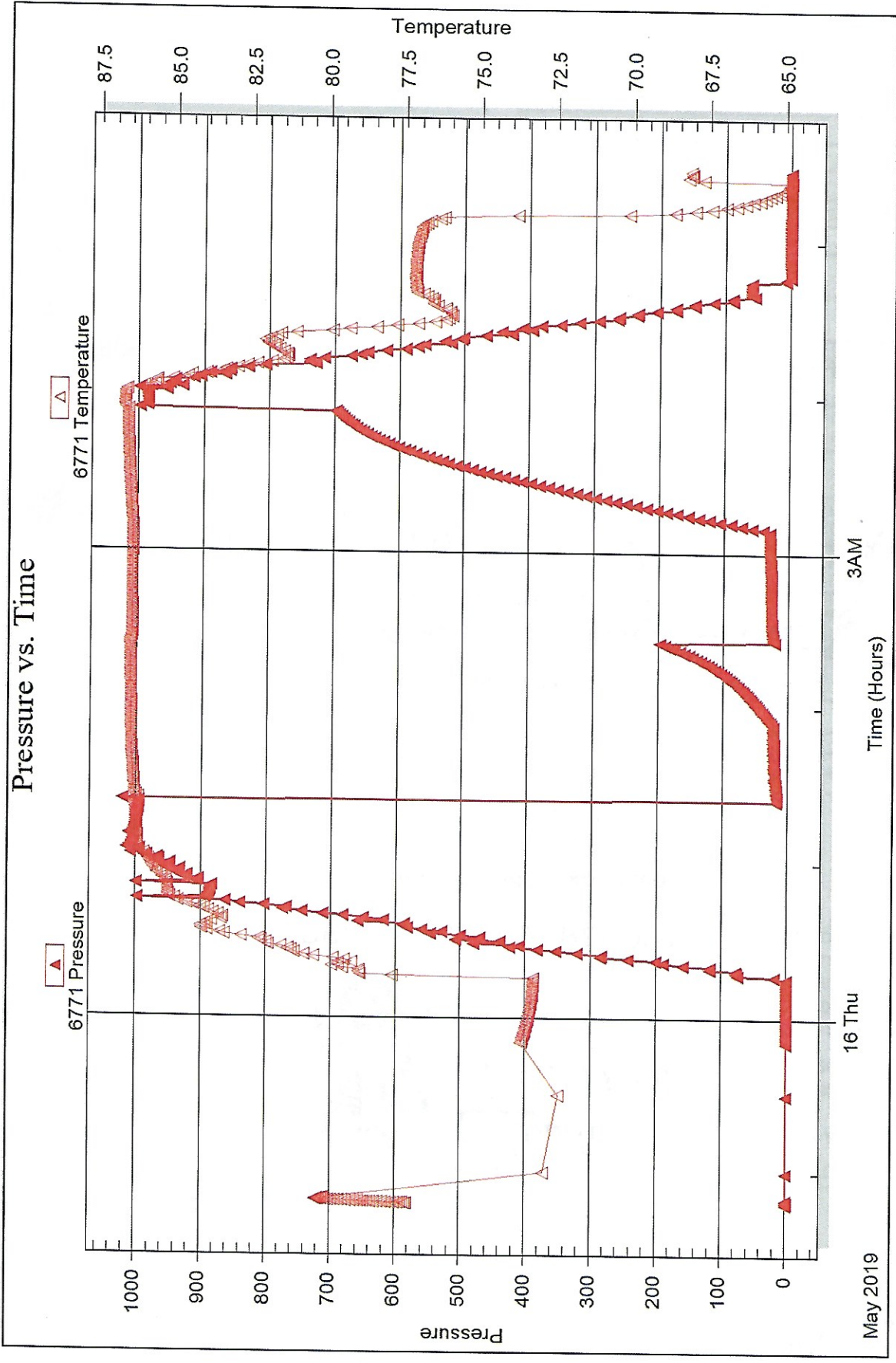
Steinle #2

DST Test Number: 1

Pressure vs. Time



Serial #: 6771 Inside H&D Exploration, LLC Steirle #2 DST Test Number: 1





DRILL STEM TEST REPORT

Prepared For: **H&D Exploration, LLC**

PO Box 387
Hoisington, KS 67544

ATTN: Wyatt Urban

Steinle #2

30-14S-12W Russell,KS

Start Date: 2019.05.17 @ 10:33:32

End Date: 2019.05.17 @ 16:47:08

Job Ticket #: 65689 DST #: 2

Trilobite Testing, Inc
1515 Commerce Parkway Hays, KS 67601
ph: 785-625-4778 fax: 785-625-5620



TRILOBITE TESTING, INC.

DRILL STEM TEST REPORT

H&D Exploration, LLC

30-14S-12W Russell, KS

PO Box 387
Hoisington, KS 67544

Steinle #2

Job Ticket: 65689 DST#: 2

ATTN: Wyatt Urban

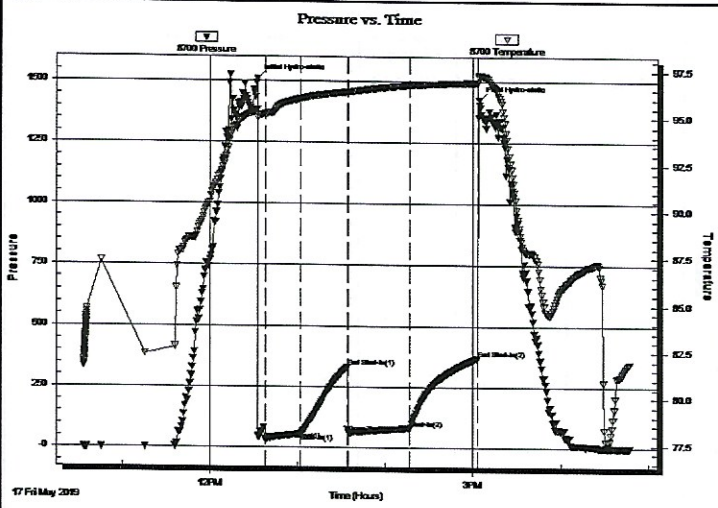
Test Start: 2019.05.17 @ 10:33:32

GENERAL INFORMATION:

Formation: **LKC "A-D"**
 Deviated: No Whipstock: ft (KB)
 Time Tool Opened: 12:38:08
 Time Test Ended: 16:47:08
 Test Type: Conventional Bottom Hole (Reset)
 Tester: Brannan Lonsdale
 Unit No: 73
 Interval: **2822.00 ft (KB) To 2895.00 ft (KB) (TVD)**
 Total Depth: 2895.00 ft (KB) (TVD)
 Reference Elevations: 1677.00 ft (KB)
 1668.00 ft (CF)
 Hole Diameter: 7.88 inches Hole Condition: Fair
 KB to GR/CF: 9.00 ft

Serial #: 8700 **Outside**
 Press@RunDepth: 79.89 psig @ 2823.00 ft (KB) Capacity: 8000.00 psig
 Start Date: 2019.05.17 End Date: 2019.05.17 Last Calib.: 2019.05.17
 Start Time: 10:33:33 End Time: 16:47:08 Time On Btm: 2019.05.17 @ 12:32:38
 Time Off Btm: 2019.05.17 @ 15:04:08

TEST COMMENT: 30- IF- BOB 6 mins. Built to 59.49"
 30- IS- Slowly built to 0.73" in 11 mins then slowly died
 45- FF- BOB 4 mins. Built to 48.63"
 45- FS- Slowly built to 2.16"



PRESSURE SUMMARY

Time (Min.)	Pressure (psig)	Temp (deg F)	Annotation
0	1508.07	95.44	Initial Hydro-static
6	30.50	95.22	Open To Flow (1)
30	54.91	96.04	Shut-In(1)
62	332.46	96.40	End Shut-In(1)
62	61.67	96.41	Open To Flow (2)
104	79.89	96.76	Shut-In(2)
151	368.72	96.91	End Shut-In(2)
152	1426.90	97.30	Final Hydro-static

Recovery

Length (ft)	Description	Volume (bbl)
160.00	GWOCM, 15%G 10%W 25%O 50%M	2.27
0.00	850' GIP	0.00

* Recovery from multiple tests

Gas Rates

Choke (inches)	Pressure (psig)	Gas Rate (Mcf/d)



**TRILOBITE
TESTING, INC.**

DRILL STEM TEST REPORT

TOOL DIAGRAM

H&D Exploration, LLC

30-14S-12W Russell, KS

PO Box 387
Hoisington, KS 67544

Steinle #2

Job Ticket: 65689

DST#: 2

ATTN: Wyatt Urban

Test Start: 2019.05.17 @ 10:33:32

Tool Information

Drill Pipe:	Length: 2817.00 ft	Diameter: 3.82 inches	Volume: 39.93 bbl	Tool Weight: 2000.00 lb
Heavy Wt. Pipe:	Length: ft	Diameter: inches	Volume: - bbl	Weight set on Packer: 25000.00 lb
Drill Collar:	Length: 0.00 ft	Diameter: 2.25 inches	Volume: 0.00 bbl	Weight to Pull Loose: 37000.00 lb
			Total Volume: - bbl	Tool Chased 0.00 ft
Drill Pipe Above KB:	15.00 ft			String Weight: Initial 33000.00 lb
Depth to Top Packer:	2822.00 ft			Final 34000.00 lb
Depth to Bottom Packer:	ft			
Interval between Packers:	73.00 ft			
Tool Length:	93.00 ft			
Number of Packers:	2	Diameter: 6.75 inches		

Tool Comments:

Tool Description

Tool Description	Length (ft)	Serial No.	Position	Depth (ft)	Accum. Lengths
Change Over Sub	1.00			2803.00	
Shut In Tool	5.00			2808.00	
Hydraulic tool	5.00			2813.00	
Packer	5.00			2818.00	20.00 Bottom Of Top Packer
Packer	4.00			2822.00	
Stubb	1.00			2823.00	
Recorder	0.00	6771	Inside	2823.00	
Recorder	0.00	8700	Outside	2823.00	
Perforations	5.00			2828.00	
Change Over Sub	1.00			2829.00	
Drill Pipe	62.00			2891.00	
Change Over Sub	1.00			2892.00	
Bullnose	3.00			2895.00	73.00 Bottom Packers & Anchor
Total Tool Length:	93.00				



**TRILOBITE
TESTING, INC**

DRILL STEM TEST REPORT

FLUID SUMMARY

H&D Exploration, LLC

30-14S-12W Russell,KS

PO Box 387
Hoisington, KS 67544

Steinle #2

Job Ticket: 65689

DST#: 2

ATTN: Wyatt Urban

Test Start: 2019.05.17 @ 10:33:32

Mud and Cushion Information

Mud Type: Gel Chem	Cushion Type:	Oil API: 28 deg API
Mud Weight: 9.00 lb/gal	Cushion Length: ft	Water Salinity: 65000 ppm
Viscosity: 53.00 sec/qt	Cushion Volume: bbl	
Water Loss: 10.19 in ³	Gas Cushion Type:	
Resistivity: ohm.m	Gas Cushion Pressure: psig	
Salinity: 11000.00 ppm		
Filter Cake: inches		

Recovery Information

Recovery Table

Length ft	Description	Volume bbl
160.00	GWOCM, 15%G 10%W 25%O 50%M	2.268
0.00	850' GIP	0.000

Total Length: 160.00 ft Total Volume: 2.268 bbl

Num Fluid Samples: 0 Num Gas Bombs: 0 Serial #:

Laboratory Name: Laboratory Location:

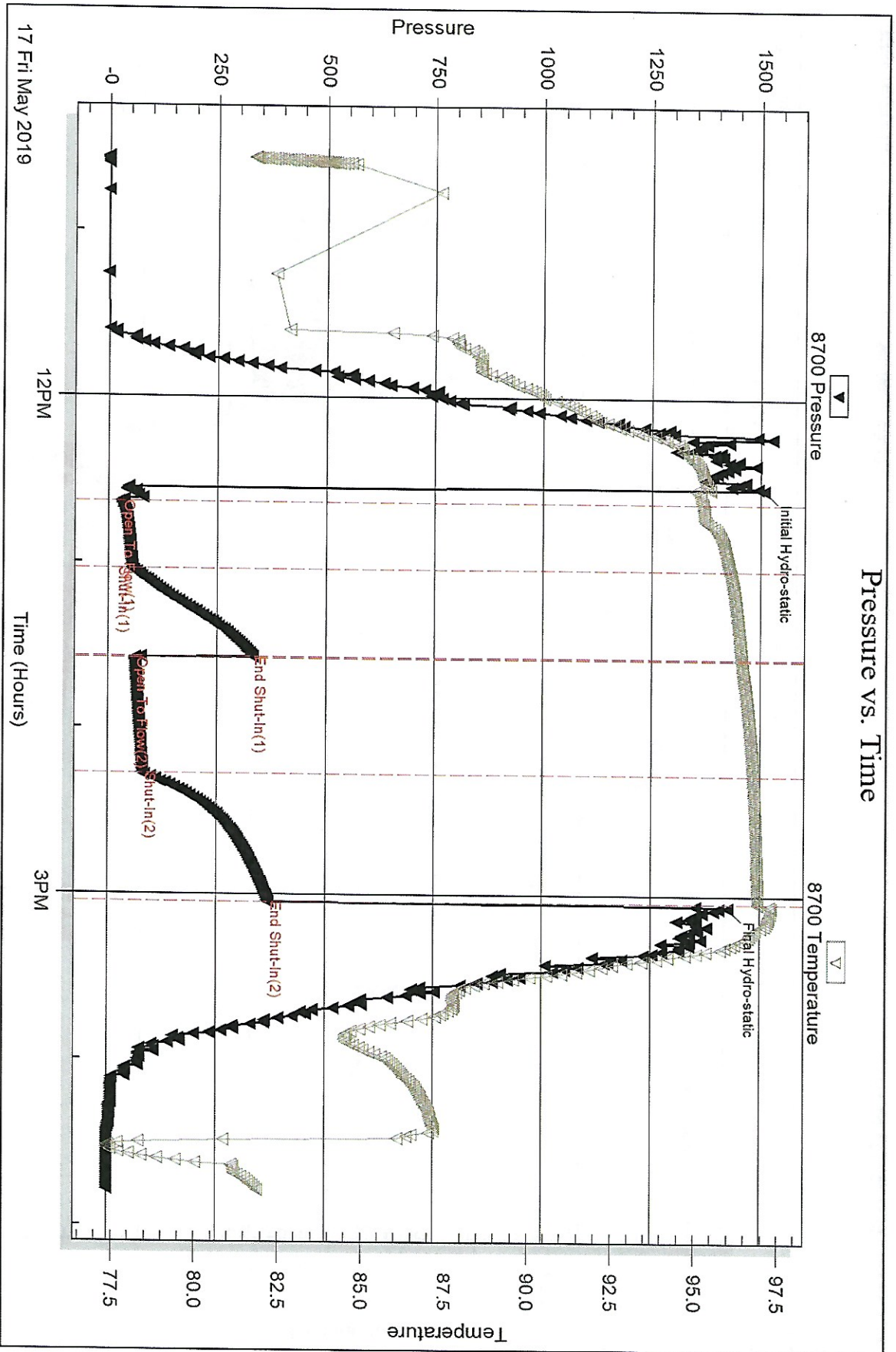
Recovery Comments: RW: .11@63deg

Serial #: 8700

Outside H&D Exploration, LLC

Stenle #2

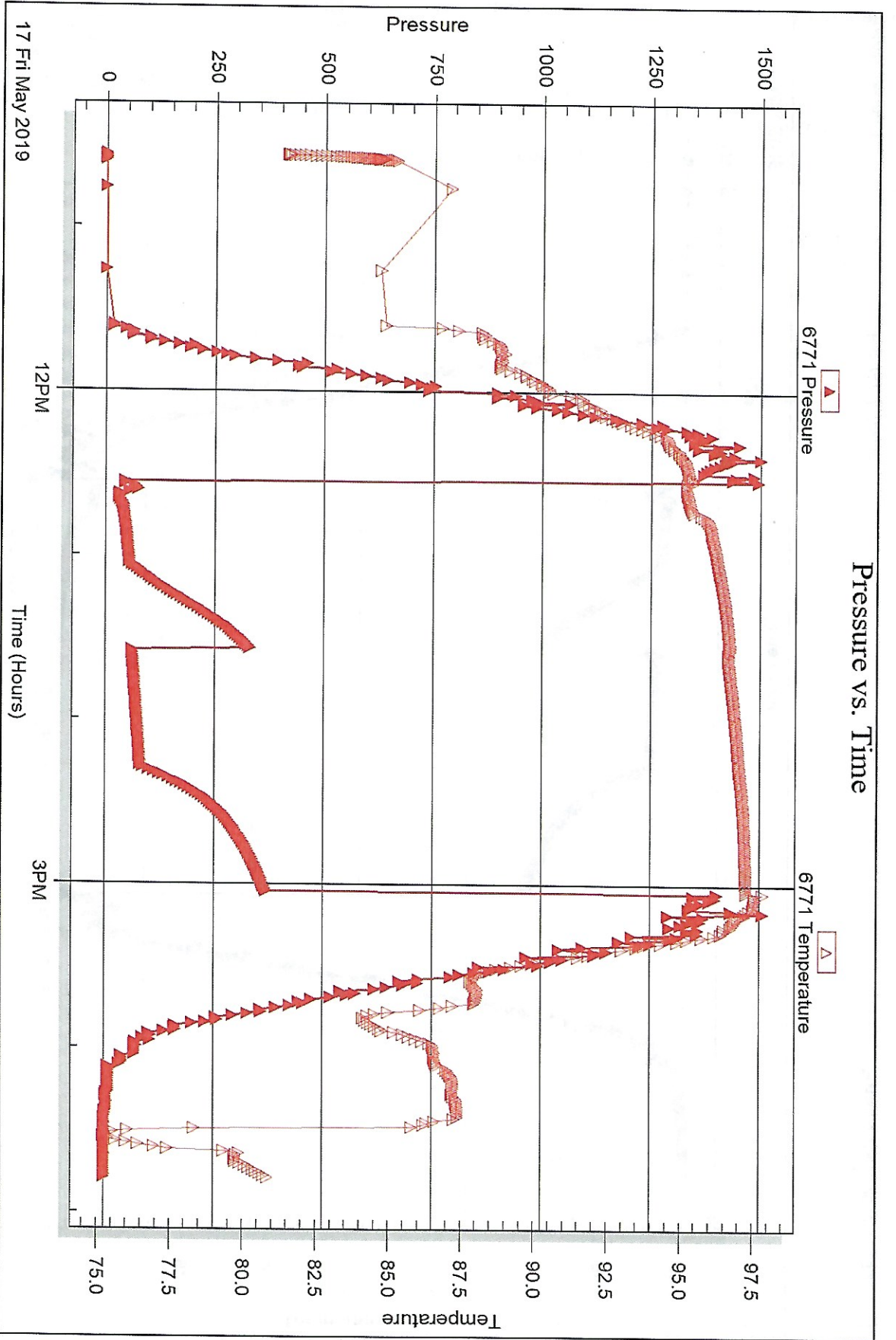
DST Test Number: 2

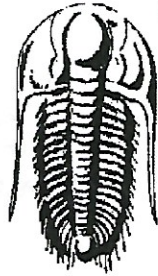


Trilobite Testing, Inc

Ref. No: 65689

Printed: 2019.05.20 @ 11:39:22





**TRILOBITE
TESTING, INC.**

DRILL STEM TEST REPORT

Prepared For: **H&D Exploration, LLC**

PO Box 387
Hoisington, KS 67544

ATTN: Wyatt Urban

Steinle #2

30-14S-12W Russell,KS

Start Date: 2019.05.17 @ 23:00:35

End Date: 2019.05.18 @ 05:58:11

Job Ticket #: 65690 DST #: 3

Trilobite Testing, Inc

1515 Commerce Parkway Hays, KS 67601

ph: 785-625-4778 fax: 785-625-5620

Printed: 2019.05.20 @ 11:37:04



TRILOBITE TESTING, INC.

DRILL STEM TEST REPORT

H&D Exploration, LLC

30-14S-12W Russell, KS

PO Box 387
Hoisington, KS 67544

Steinle #2

Job Ticket: 65690

DST#: 3

ATTN: Wyatt Urban

Test Start: 2019.05.17 @ 23:00:35

GENERAL INFORMATION:

Formation: **LKC "D-F"**
 Deviated: No Whipstock: ft (KB)
 Time Tool Opened: 01:12:56
 Time Test Ended: 05:58:11

Test Type: Conventional Bottom Hole (Reset)
 Tester: Brannan Lonsdale
 Unit No: 73

Interval: **2890.00 ft (KB) To 2940.00 ft (KB) (TVD)**
 Total Depth: 2940.00 ft (KB) (TVD)
 Hole Diameter: 7.88 inches Hole Condition: Fair

Reference Elevations: 1677.00 ft (KB)
 1668.00 ft (CF)
 KB to GR/CF: 9.00 ft

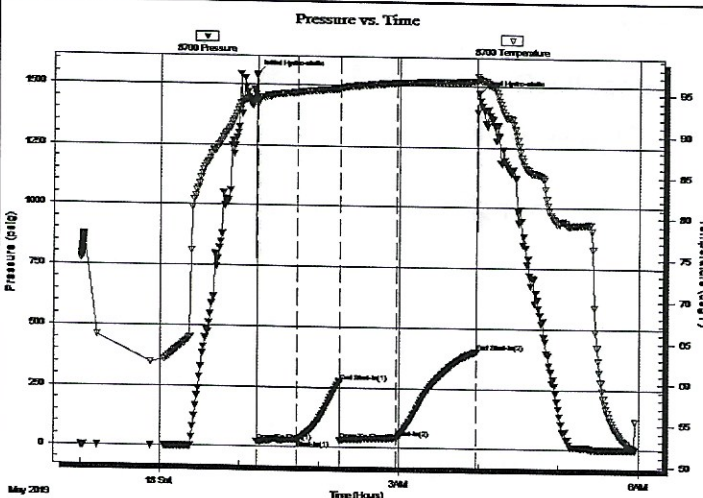
Serial #: 8700

Outside

Press@RunDepth: 39.53 psig @ 2891.00 ft (KB)
 Start Date: 2019.05.17 End Date: 2019.05.18
 Start Time: 23:00:36 End Time: 05:58:11

Capacity: 8000.00 psig
 Last Calib.: 2019.05.18
 Time On Btm: 2019.05.18 @ 01:12:41
 Time Off Btm: 2019.05.18 @ 03:59:11

TEST COMMENT: 30- IF- Slow ly built to 3.41"
 30- IS- No blow
 45- FF- Slow ly built to 12.06"
 60- FS- No blow



PRESSURE SUMMARY

Time (Min.)	Pressure (psig)	Temp (deg F)	Annotation
0	1540.01	94.27	Initial Hydro-static
1	18.99	93.54	Open To Flow (1)
31	29.63	95.02	Shut-In(1)
63	274.50	95.47	End Shut-In(1)
63	27.18	95.50	Open To Flow (2)
106	39.53	96.27	Shut-In(2)
166	405.30	96.53	End Shut-In(2)
167	1470.83	96.83	Final Hydro-static

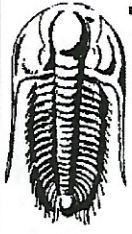
Recovery

Length (ft)	Description	Volume (bbl)
50.00	OSM	0.71

* Recovery from multiple tests

Gas Rates

	Choke (inches)	Pressure (psig)	Gas Rate (Mcf/d)



**TRILOBITE
TESTING, INC.**

DRILL STEM TEST REPORT

TOOL DIAGRAM

H&D Exploration, LLC

30-14S-12W Russell, KS

PO Box 387
Hoisington, KS 67544

Steinle #2

Job Ticket: 65690

DST#: 3

ATTN: Wyatt Urban

Test Start: 2019.05.17 @ 23:00:35

Tool Information

Drill Pipe:	Length: 2880.00 ft	Diameter: 3.82 inches	Volume: 40.83 bbl	Tool Weight: 2000.00 lb
Heavy Wt. Pipe:	Length: ft	Diameter: inches	Volume: - bbl	Weight set on Packer: 25000.00 lb
Drill Collar:	Length: 0.00 ft	Diameter: 2.25 inches	Volume: 0.00 bbl	Weight to Pull Loose: 36000.00 lb
			<u>Total Volume: - bbl</u>	Tool Chased 0.00 ft
Drill Pipe Above KB:	13.00 ft			String Weight: Initial 32000.00 lb
Depth to Top Packer:	2890.00 ft			Final 32000.00 lb
Depth to Bottom Packer:	ft			
Interval between Packers:	50.00 ft			
Tool Length:	73.00 ft			
Number of Packers:	2	Diameter: 6.75 inches		

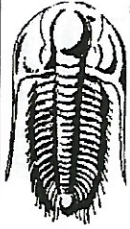
Tool Comments:

Tool Description

Length (ft) Serial No. Position Depth (ft) Accum. Lengths

Change Over Sub	1.00			2868.00	
Shut In Tool	5.00			2873.00	
Hydraulic tool	5.00			2878.00	
Safety Joint	3.00			2881.00	
Packer	5.00			2886.00	23.00 Bottom Of Top Packer
Packer	4.00			2890.00	
Stubb	1.00			2891.00	
Recorder	0.00	6771	Inside	2891.00	
Recorder	0.00	8700	Outside	2891.00	
Perforations	12.00			2903.00	
Change Over Sub	1.00			2904.00	
Drill Pipe	32.00			2936.00	
Change Over Sub	1.00			2937.00	
Bullnose	3.00			2940.00	50.00 Bottom Packers & Anchor

Total Tool Length: 73.00



**TRILOBITE
TESTING, INC.**

DRILL STEM TEST REPORT

FLUID SUMMARY

H&D Exploration, LLC

30-14S-12W Russell,KS

PO Box 387
Hoisington, KS 67544

Steinle #2

Job Ticket: 65690

DST#: 3

ATTN: Wyatt Urban

Test Start: 2019.05.17 @ 23:00:35

Mud and Cushion Information

Mud Type: Gel Chem

Mud Weight: 9.00 lb/gal

Viscosity: 53.00 sec/qt

Water Loss: 10.19 in³

Resistivity: ohm.m

Salinity: 11000.00 ppm

Filter Cake: inches

Cushion Type:

Cushion Length: ft

Cushion Volume: bbl

Gas Cushion Type:

Gas Cushion Pressure: psig

Oil API:

Water Salinity: deg API

deg API

ppm

Recovery Information

Recovery Table

Length ft	Description	Volume bbl
50.00	OSM	0.709

Total Length: 50.00 ft Total Volume: 0.709 bbl

Num Fluid Samples: 0

Num Gas Bombs: 0

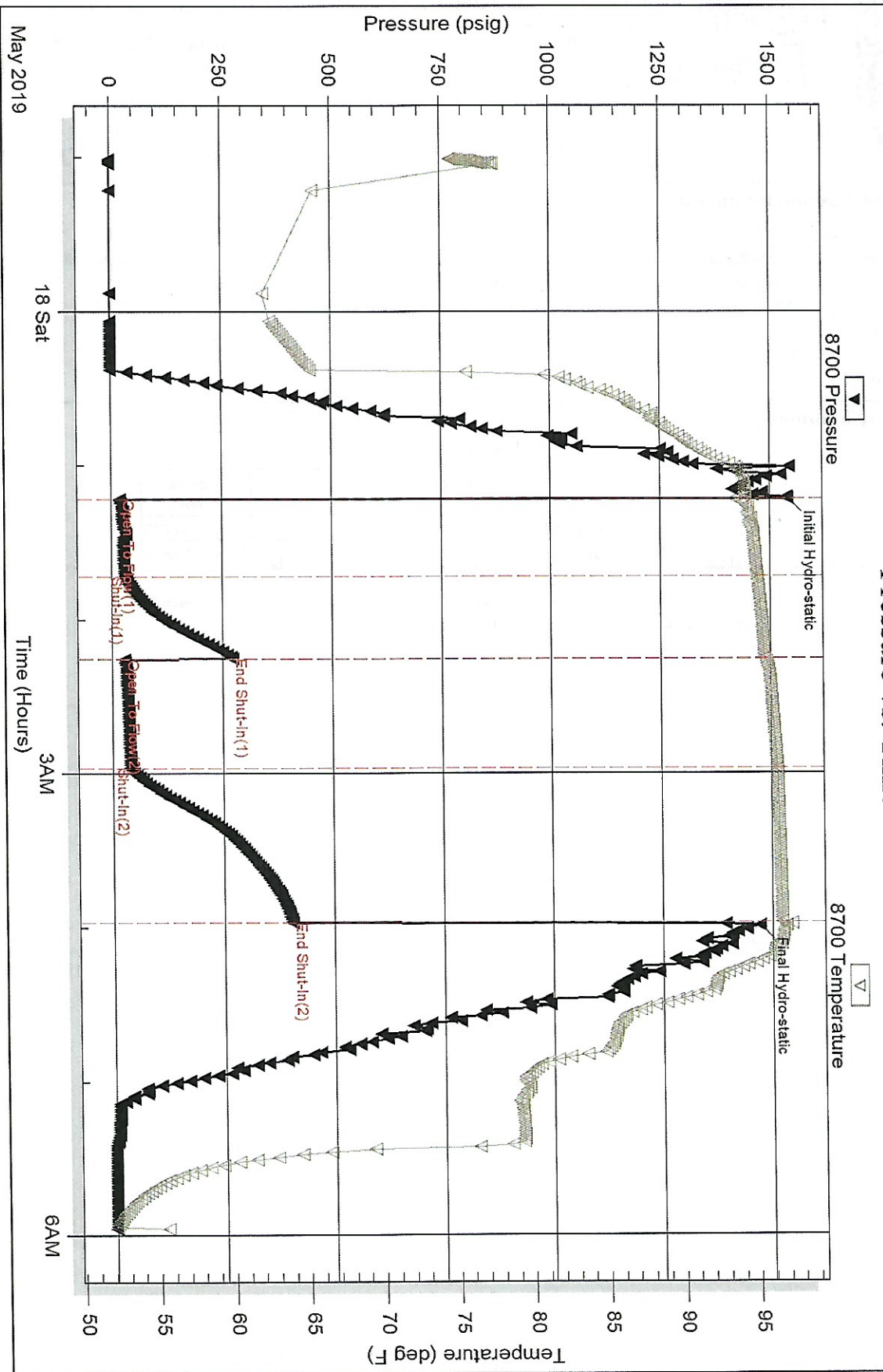
Serial#:

Laboratory Name:

Laboratory Location:

Recovery Comments:

Pressure vs. Time



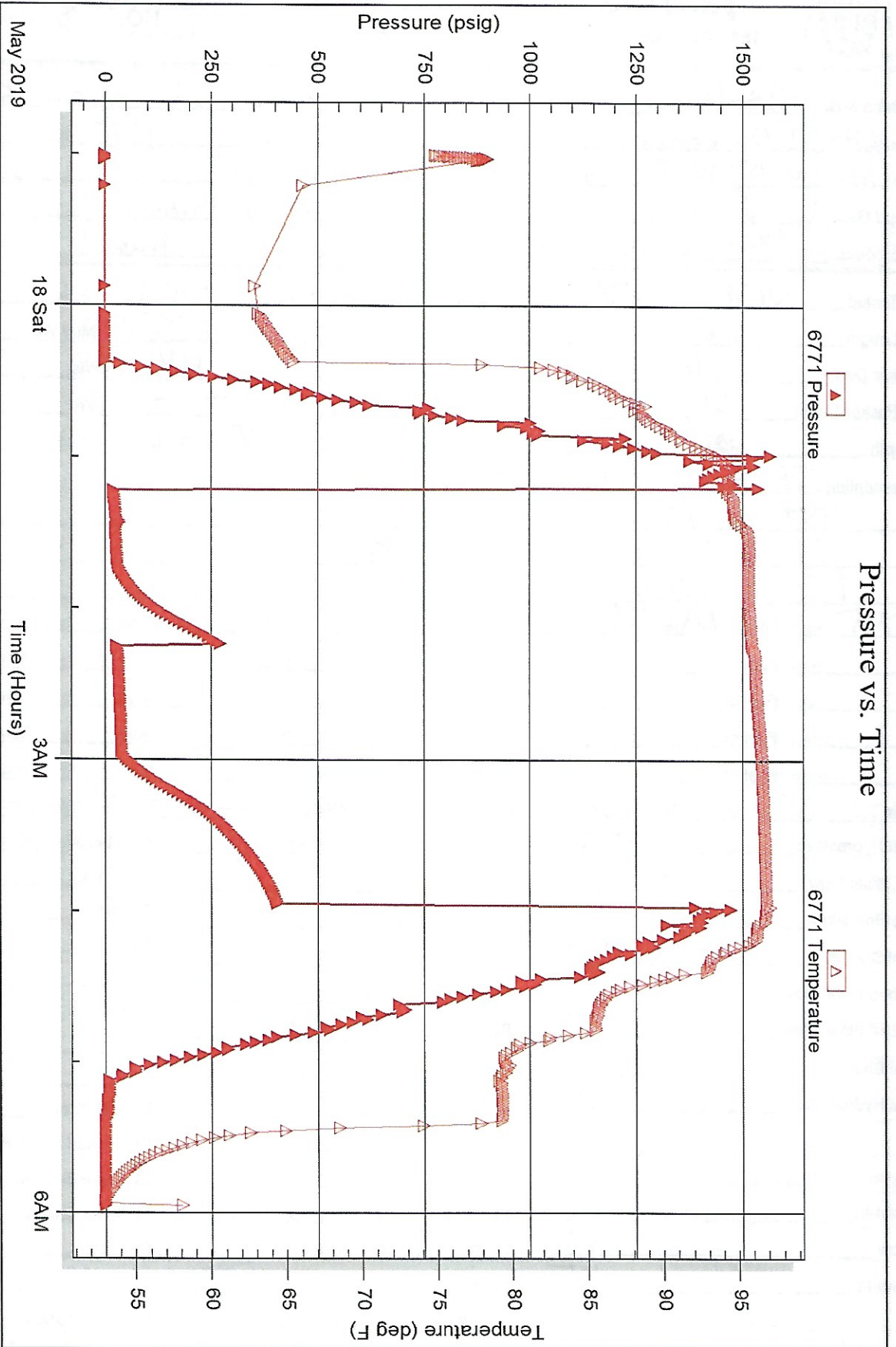
Serial #: 6771

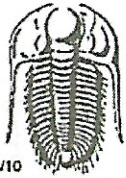
Inside

H&D Exploration, LLC

Steinle #2

DST Test Number: 3





TRILOBITE TESTING INC.

1515 Commerce Parkway • Hays, Kansas 67601

Test Ticket

NO. 65688

Well Name & No. Steinle #2 Test No. 1 Date 5/16/19
 Company H+D Explorations, LLC Elevation 1677 KB 1668 GL
 Address 165 W. 15th, PO Box 357 Herington, KS 67544
 Co. Rep / Geo. Wyatt Urban Rig Southwind 8
 Location: Sec. 30 Twp 14 S Rge. 12 W Co. Russell State KS

Interval Tested 2170-2230 Zone Tested tarbio
 Anchor Length 60' Drill Pipe Run 2065 Mud Wt. 8.4
 Top Packer Depth 2165 Drill Collars Run 114 Vis 46
 Bottom Packer Depth 2170 Wt. Pipe Run _____ WL 8.8
 Total Depth 2230 Chlorides 2500 ppm System LCM 2th

Blow Description IF - Spaly built to 8.61"
EST - No blow
FF - BOB 3 mins. Built to 82.80"
BSI - No How

Rec	Feet of	%gas	%oil	%water	%mud
<u>5</u>	<u>Mud few oil spots</u>				
Rec	Feet of	%gas	%oil	%water	%mud
Rec	Feet of	%gas	%oil	%water	%mud
Rec	Feet of	%gas	%oil	%water	%mud
Rec	Feet of	%gas	%oil	%water	%mud

Rec Total 5' BHT 86" Gravity _____ API RW _____ @ _____ °F Chlorides _____ ppm

(A) Initial Hydrostatic 1025 Test 1200 T-On Location 5/15 2235
 (B) First Initial Flow 17 Jars _____ T-Started 2248
 (C) First Final Flow 23 Safety Joint _____ T-Open 0124
 (D) Initial Shut-In 199 Circ Sub _____ T-Pulled 0354
 (E) Second Initial Flow 22 Hourly Standby _____ T-Out 0528
 (F) Second Final Flow 30 Mileage 7 RT 74 Comments _____
 (G) Final Shut-In 696 Sampler _____
 (H) Final Hydrostatic 995 Straddle _____

Initial Open 30 Shale Packer _____ EM Tool _____
 Initial Shut-In 30 Extra Packer _____ Ruined Shale Packer _____
 Final Flow 45 Extra Recorder _____ Ruined Packer _____
 Final Shut-In 45 Day Standby _____ Extra Copies _____
 Sub Total 1274 Accessibility _____ Sub Total 0
 Total 1274 MP/DST Disc't _____

Approved By _____ Our Representative Brannon Lousdale

Trilobite Testing Inc. shall not be liable for damaged of any kind of the property or personnel of the one for whom a test is made, or for any loss suffered or sustained, directly or indirectly, through the use of its equipment, or its statements or opinion concerning the results of any test, tools lost or damaged in the hole shall be paid for at cost by the party for whom the test is made.



TRILOBITE TESTING INC.

1515 Commerce Parkway • Hays, Kansas 67601

Test Ticket

NO. 65689

Well Name & No. Stanle #2 Test No. 2 Date 5/17/19
 Company H+D Exploration, LLC Elevation 1679 KB 1679 GL
 Address 165 W. 1st PO Box 387 Herington, KS 67544
 Co. Rep / Geo. Wyatt Urban Rig Southwind 3
 Location: Sec. 30 Twp 14 S Rge. 12 Wco. Russell State KS

Interval Tested 2822-2895 Zone Tested LKC "A-D"
 Anchor Length 73' Drill Pipe Run 2817 Mud Wt. 9.3
 Top Packer Depth 2817 Drill Collars Run --- Vis 53
 Bottom Packer Depth 2822 Wt. Pipe Run --- WL 10.2
 Total Depth 2895 Chlorides 11,000 ppm System LCM 1 1/2"

Blow Description IF-BOB 6mins. Built to 59.49"
ISJ- Slowly built to 0.73" in 11 mins then slowly died
FF-BOB 4mins. Built to 48.63"
FST- Slowly built to 2.16"

Rec	Feet of	%gas	%oil	%water	%mud
<u>160</u>	<u>GWOCM</u>	<u>15</u>	<u>25</u>	<u>10</u>	<u>50</u>
Rec	Feet of <u>850' GIP</u>	%gas	%oil	%water	%mud
Rec	Feet of	%gas	%oil	%water	%mud
Rec	Feet of	%gas	%oil	%water	%mud
Rec	Feet of	%gas	%oil	%water	%mud

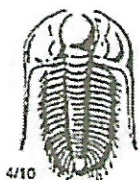
Rec Total 160' BHT 97° Gravity 28 API RW 11 @ 63° F Chlorides 65,000 ppm

(A) Initial Hydrostatic 1508 Test 1200 T-On Location 1020
 (B) First Initial Flow 31 Jars T-Started 1034
 (C) First Final Flow 55 Safety Joint T-Open 1233
 (D) Initial Shut-In 332 Circ Sub T-Pulled 1503
 (E) Second Initial Flow 62 Hourly Standby T-Out 1648
 (F) Second Final Flow 80 Mileage 74 RT ⁷⁴ Comments _____
 (G) Final Shut-In 369 Sampler _____
 (H) Final Hydrostatic 1427 Straddle _____

Initial Open 30 Shale Packer _____
 Initial Shut-In 30 Extra Packer _____
 Final Flow 45 Extra Recorder _____
 Final Shut-In 45 Day Standby _____
 Sub Total 1274 Accessibility _____
 Sub Total 1274 EM Tool _____
 Total 1274 Ruined Shale Packer _____
 Total 1274 Ruined Packer _____
 Total 1274 Extra Copies _____
 Total 1274 Sub Total 0
 Total 1274 Total 1274
 Total 1274 Total 1274

Approved By _____ Our Representative Bannon Linsdale

Trilobite Testing Inc. shall not be liable for damaged of any kind of the property or personnel of the one for whom a test is made, or for any loss suffered or sustained, directly or indirectly, through the use of its equipment, or its statements or opinion concerning the results of any test, tools lost or damaged in the hole shall be paid for at cost by the party for whom the test is made.



TRILOBITE TESTING INC.

1515 Commerce Parkway • Hays, Kansas 67601

Test Ticket

NO. 65690

Well Name & No. Steinle #2 Test No. 3 Date 5/18/19
 Company H&D Exploration, LLC Elevation 1679 KB 1670 GL
 Address 165 W. 1st, PO Box 387 Hastington, KS 67544
 Co. Rep / Geo. Wyatt Urban Rig Southward 3
 Location: Sec. 30 Twp 14 S Rge. 12 W Co. Russell State KS

Interval Tested 2890-2940 Zone Tested LKC "D-F"
 Anchor Length 50' Drill Pipe Run 2880 Mud Wt. 9.3
 Top Packer Depth 2885 Drill Collars Run ———— Vis 53
 Bottom Packer Depth 2890 Wt. Pipe Run ———— WL 10.2
 Total Depth 2940 Chlorides 11,000 ppm System LCM 1/2"

Blow Description IF - slowly built to 3.41"
ISF - No blow
FF - slowly built to 12.06"
FSD - No blow

Rec	Feet of	%gas	%oil	%water	%mud
<u>50'</u>	<u>OSM</u>				
Rec	Feet of	%gas	%oil	%water	%mud
Rec	Feet of	%gas	%oil	%water	%mud
Rec	Feet of	%gas	%oil	%water	%mud

Rec Total 50' BHT 97° Gravity ———— API RW ———— @ ———— ° F Chlorides ———— ppm

- (A) Initial Hydrostatic 1540
- (B) First Initial Flow 19
- (C) First Final Flow 30
- (D) Initial Shut-In 275
- (E) Second Initial Flow 27
- (F) Second Final Flow 40
- (G) Final Shut-In 405
- (H) Final Hydrostatic 1471

- Test 1200
- Jars ————
- Safety Joint 75
- Circ Sub ————
- Hourly Standby ————
- Mileage 74 RT 74+74
- Sampler ————
- Straddle ————
- Shale Packer ————
- Extra Packer ————
- Extra Recorder ————
- Day Standby ————
- Accessibility ————

T-On Location 5/17 2245
 T-Started 2300
 T-Open 0112
 T-Pulled 0357
 T-Out 0558

Comments Tools loaded
5/19 @ 1400

Initial Open 30
 Initial Shut-In 30
 Final Flow 45
 Final Shut-In 60

EM Tool ————
 Ruined Shale Packer ————
 Ruined Packer ————
 Extra Copies ————
 Sub Total 0
 Total 1423
 MP/DST Disc't ————

Approved By ———— Our Representative Brannon Lonsdale

Trilobite Testing Inc. shall not be liable for damaged of any kind of the property or personnel of the one for whom a test is made, or for any loss suffered or sustained, directly or indirectly, through the use of its equipment, or its statements or opinion concerning the results of any test, tools lost or damaged in the hole shall be paid for at cost by the party for whom the test is made.