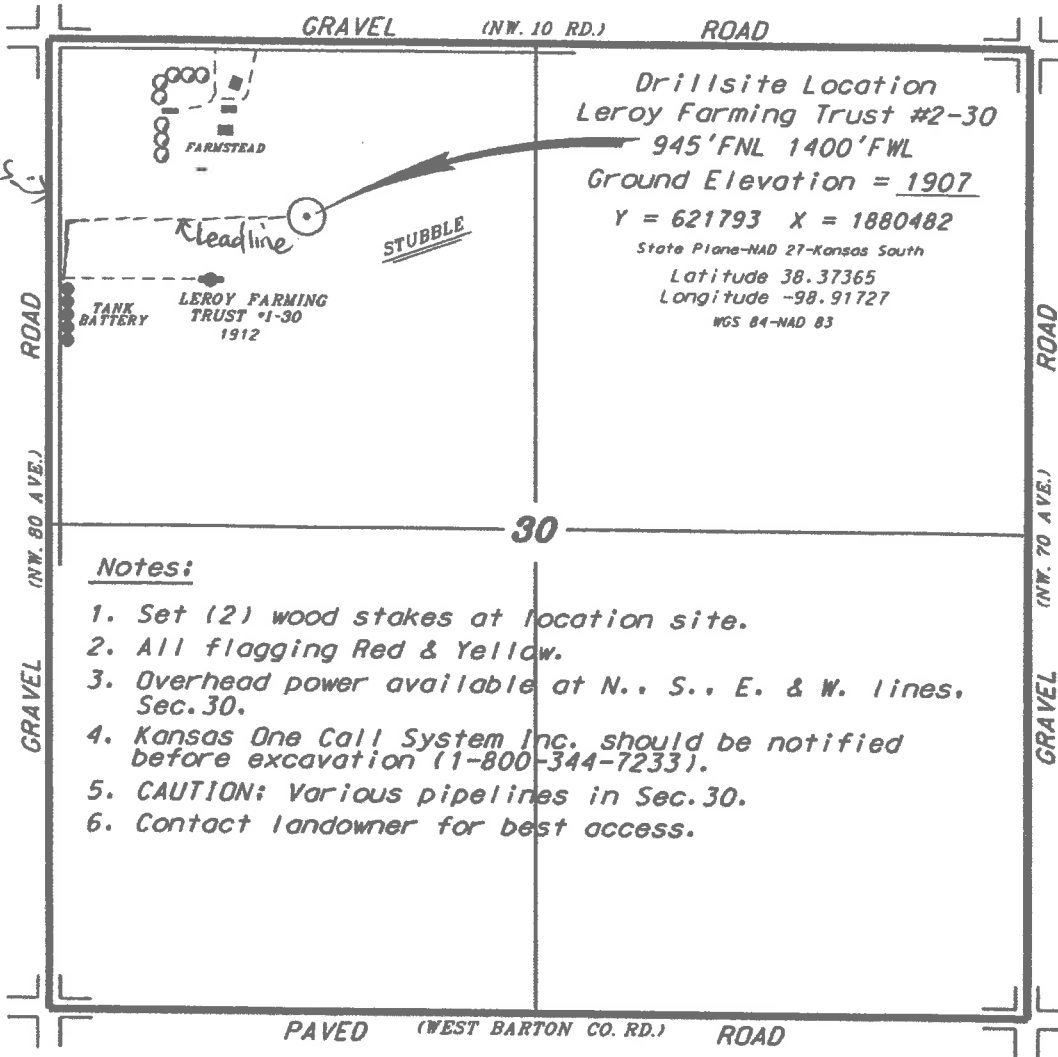


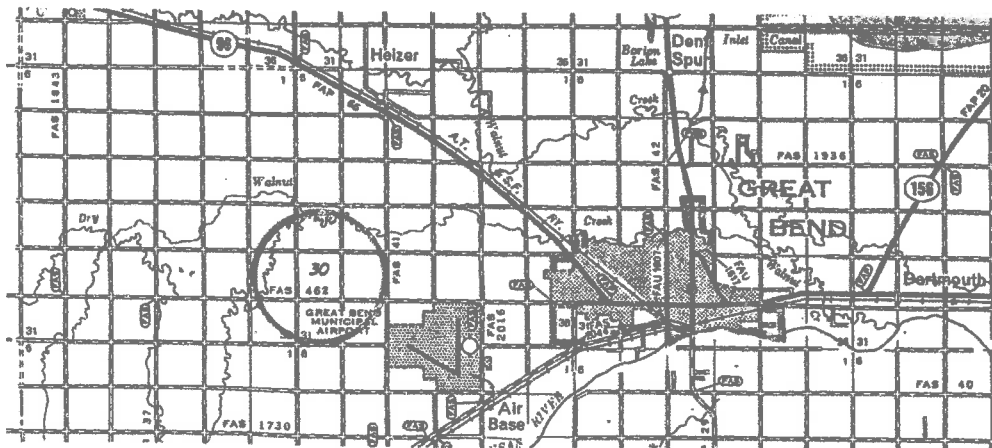
F.G. HOLL COMPANY, LLC
 LEROY FARMING TRUST LEASE
 NW.1/4, SECTION 30, T19S, R14W
 BARTON COUNTY, KANSAS



Drillsite Location
 Leroy Farming Trust #2-30
 945'FNL 1400'FWL
 Ground Elevation = 1907
 Y = 621793 X = 1880482
 State Plane-NAD 27-Kansas South
 Latitude 38.37365
 Longitude -98.91727
 WGS 84-NAD 83

Notes:

1. Set (2) wood stakes at location site.
2. All flagging Red & Yellow.
3. Overhead power available at N., S., E. & W. lines, Sec.30.
4. Kansas One Call System Inc. should be notified before excavation (1-800-344-7233).
5. CAUTION: Various pipelines in Sec.30.
6. Contact landowner for best access.



* Controlling data is based upon the best maps and photographs available to us and upon a regular section of land containing 640 acres.
 * Approximate section lines were determined using the normal standard of care of oilfield surveyors practicing in the state of Kansas. The section corners, which establish the precise section lines, were not necessarily located, and the exact location of the drillsite location in the section is not guaranteed. Therefore, the operator securing this service and accepting this plat and all other parties relying thereon agree to hold Central Kansas Oilfield Services, Inc., its officers and employees harmless from all losses, costs and expenses and said entities released from any liability from incidental or consequential damages.
 * Elevations derived from National Geodetic Vertical Datum.

Date October 14, 2019

CENTRAL KANSAS OILFIELD SERVICES, INC. (620)792-1977

