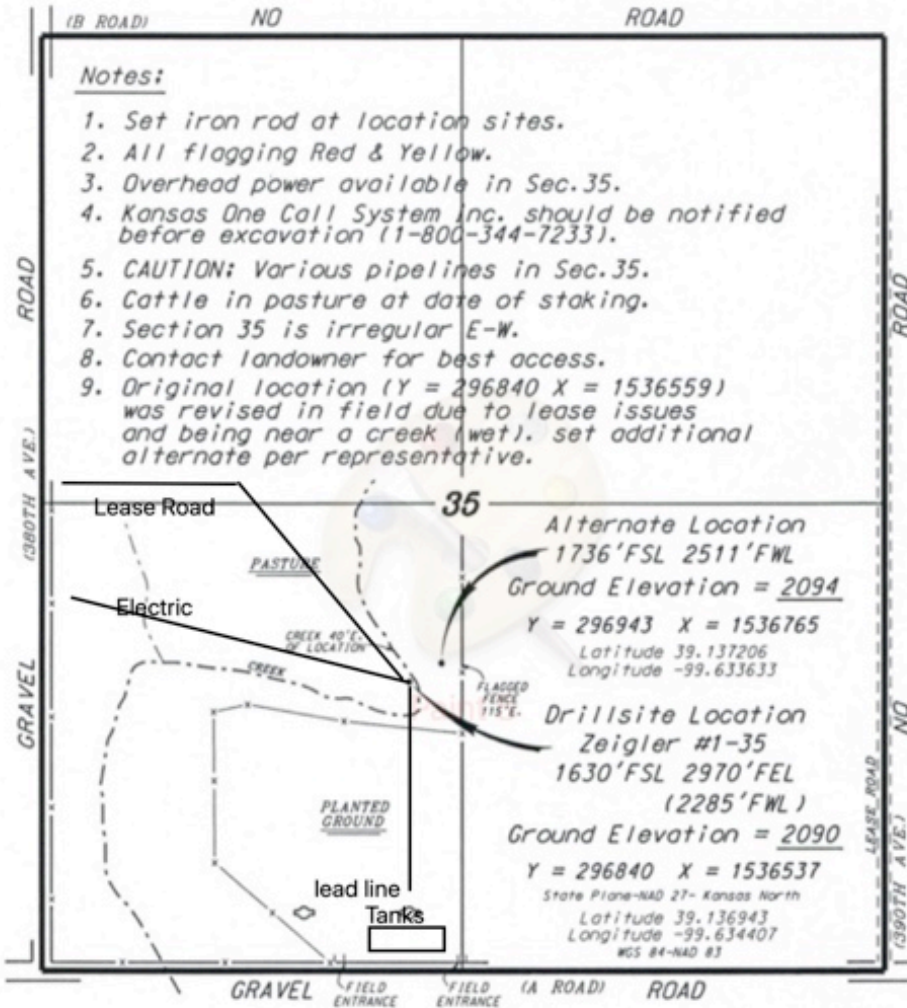


PATTERSON ENERGY, LLC
 ZEIGLER LEASE
 SW.1/4, SECTION 35, T10S, R21W
 GRAHAM COUNTY, KANSAS

Notes:

1. Set iron rod at location sites.
2. All flagging Red & Yellow.
3. Overhead power available in Sec.35.
4. Kansas One Call System Inc. should be notified before excavation (1-800-344-7233).
5. CAUTION: Various pipelines in Sec.35.
6. Cattle in pasture at date of staking.
7. Section 35 is irregular E-W.
8. Contact landowner for best access.
9. Original location (Y = 296840 X = 1536559) was revised in field due to lease issues and being near a creek (wet). set additional alternate per representative.

*Ingress and egress to location as shown on this plot is for usage only and may not be legally opened for public use. Contact landowner, tenant and county road department for access.



35

Alternate Location
 1736'FSL 2511'FWL
 Ground Elevation = 2094
 Y = 296943 X = 1536765
 Latitude 39.137206
 Longitude -99.633633

Drillsite Location
 Zeigler #1-35
 1630'FSL 2970'FEL
 (2285'FWL)
 Ground Elevation = 2090
 Y = 296840 X = 1536537
 State Plane-NAD 27- Kansas North
 Latitude 39.136943
 Longitude -99.634407
 NGS 84-NAD 83

