



Fall & Associates
 Stake and Elevation Service
 P.O. Box 222
 Pretty Prairie, KS. 67570
 785-243-7506

Date 9-26-19

Invoice Number 0922191

MURFIN DRILLING

1-21

Smith 'B'

Operator

Number

Farm Name

Cheyenne-KS

21 2s 37w

2310'FNL 500'FEL

County-State

S T R

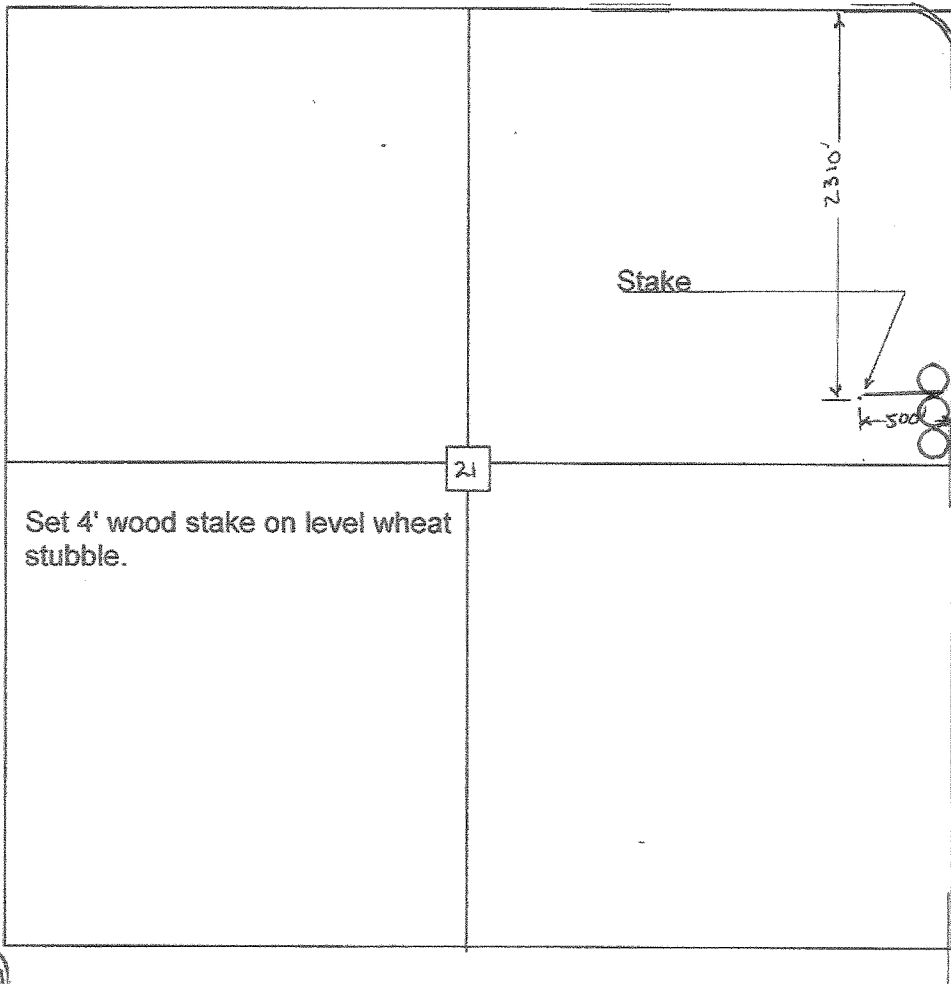
Location

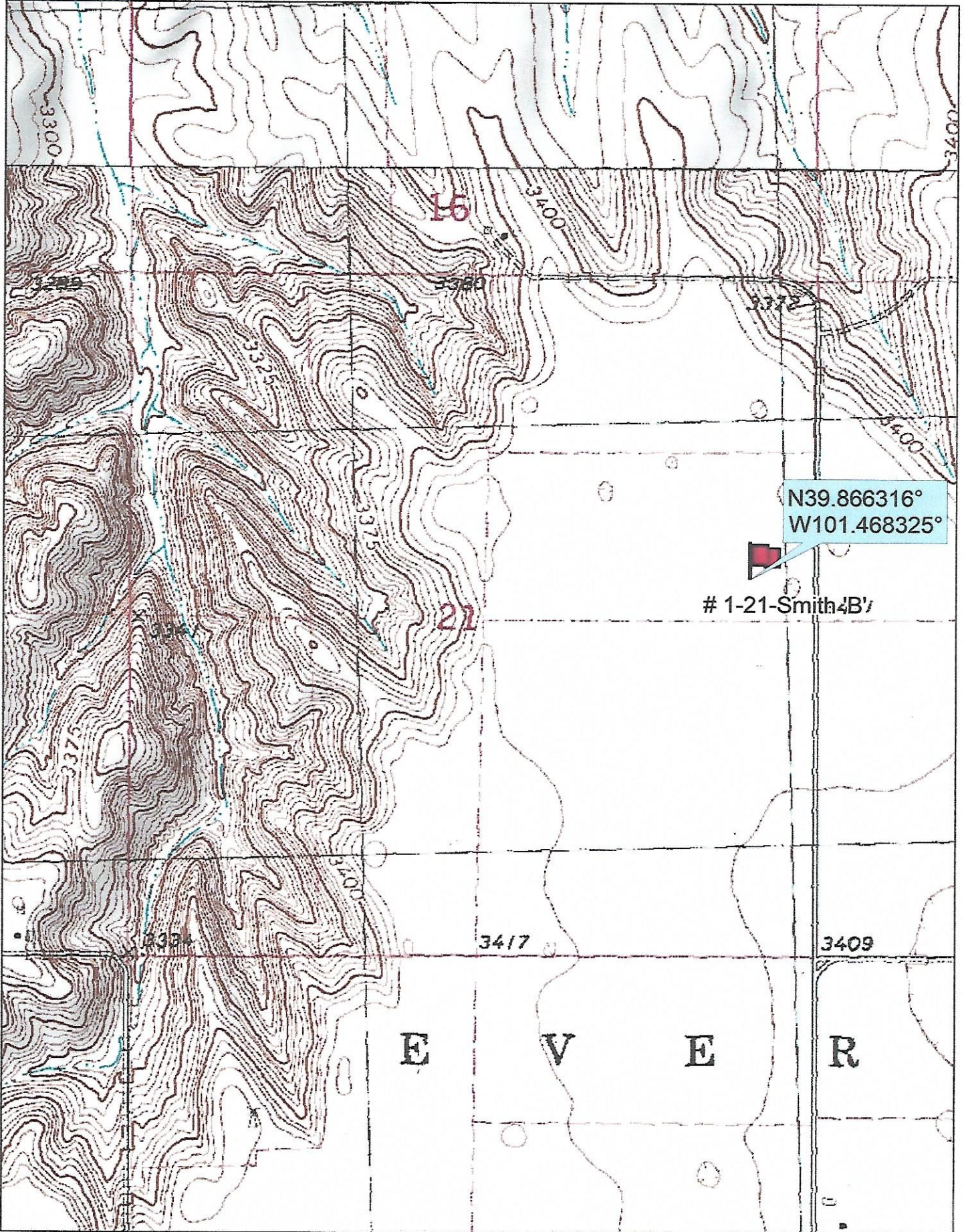
Murfin Drilling
 250 N. Water
 Suite 300
 Wichita, KS. 67202

Elevation 3411 Gr.

Ordered By: Shanua

Scale 1"=1000'

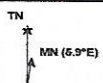




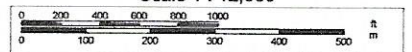
Data use subject to license.

© DeLorme. Topo North America™ 9.

www.delorme.com



Scale 1 : 12,000



1" = 1,000.0 ft

Data Zoom 13-1