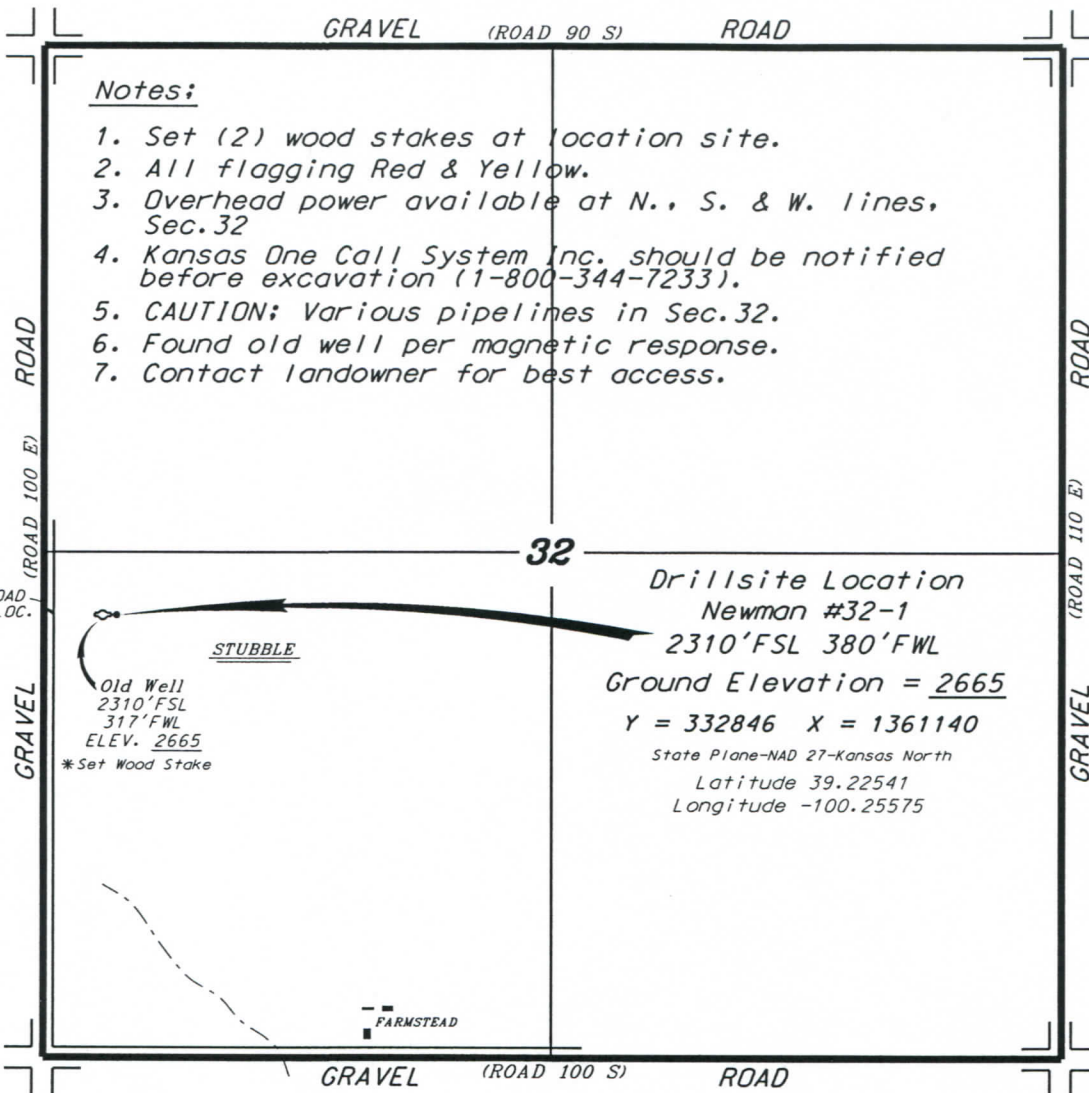


RUSSELL OIL, INC.
 NEWMAN LEASE
 SW.1/4, SECTION 32, T9S, R26W
 SHERIDAN COUNTY, KANSAS

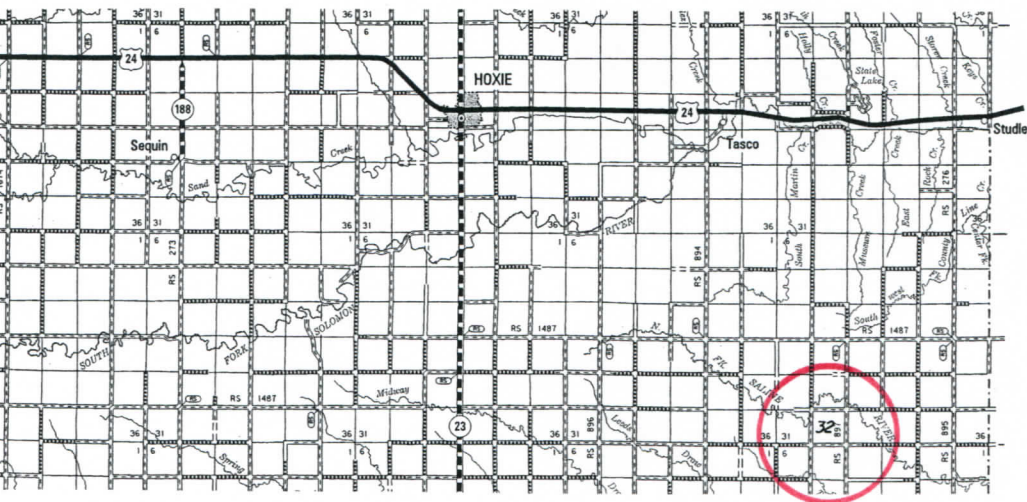
* Ingress and egress to location as shown on this plat is per usage only and may not be legally opened for public use. Contact landowner, tenant and county road department for access.



Notes:

1. Set (2) wood stakes at location site.
2. All flagging Red & Yellow.
3. Overhead power available at N., S. & W. lines, Sec. 32
4. Kansas One Call System Inc. should be notified before excavation (1-800-344-7233).
5. CAUTION; Various pipelines in Sec. 32.
6. Found old well per magnetic response.
7. Contact landowner for best access.

Drillsite Location
 Newman #32-1
 2310'FSL 380'FWL
 Ground Elevation = 2665
 Y = 332846 X = 1361140
 State Plane-NAD 27-Kansas North
 Latitude 39.22541
 Longitude -100.25575



* Controlling data is based upon the best maps and photographs available to us and upon a regular section of land containing 640 acres.
 * Approximate section lines were determined using the normal standard of care of oilfield surveyors practicing in the state of Kansas. The section corners, which establish the precise section lines, were not necessarily located, and the exact location of the drillsite location in the section is not guaranteed. Therefore, the operator securing this service and accepting this plat and all other parties relying thereon agree to hold Central Kansas Oilfield Services, Inc., its officers and employees harmless from all losses, costs and expenses and said entities released from any liability from incidental or consequential damages.
 * Elevations derived from National Geodetic Vertical Datum.

Date October 17, 2019