




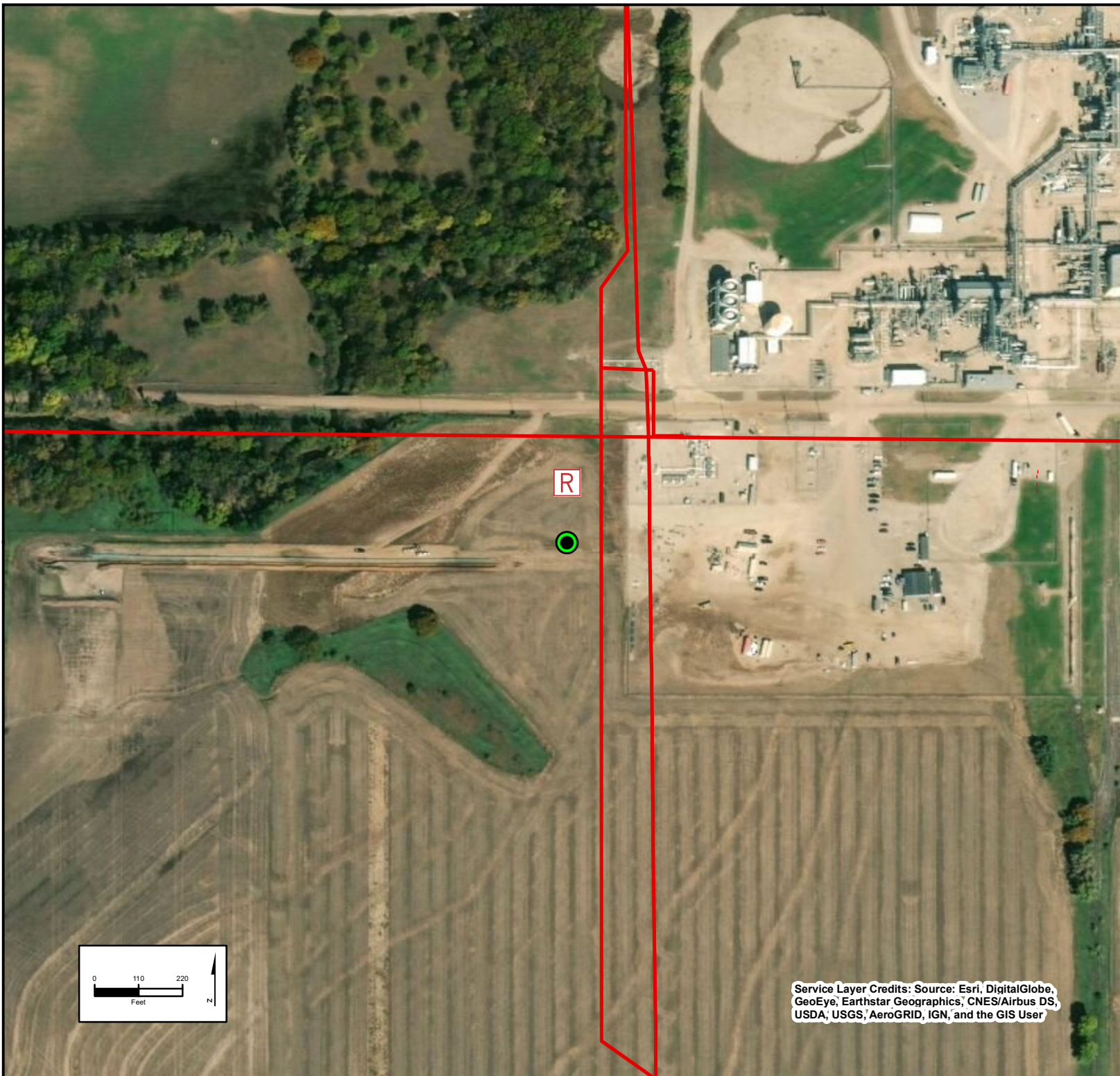


Elk Creek Pump Station New Hall

Legend

-  Deep Well Groundbed
-  Rectifier
-  Pipeline

Rice County, KS
Groundbed Location:
342' from N section line
2,780' from W section line
NE NW, S6, T18S, R9W



The locations shown on the plat are preliminary non-binding estimates. Pipeline and Groundbed are below ground features. Rectifier is an above ground feature.

DRAWN BY: TT

CHECKED BY: RZ

Date: 10/8/2019

Service Layer Credits: Source: Esri, DigitalGlobe, GeoEye, Earthstar Geographics, CNES/Airbus DS, USDA, USGS, AeroGRID, IGN, and the GIS User



Project No. 453614-002