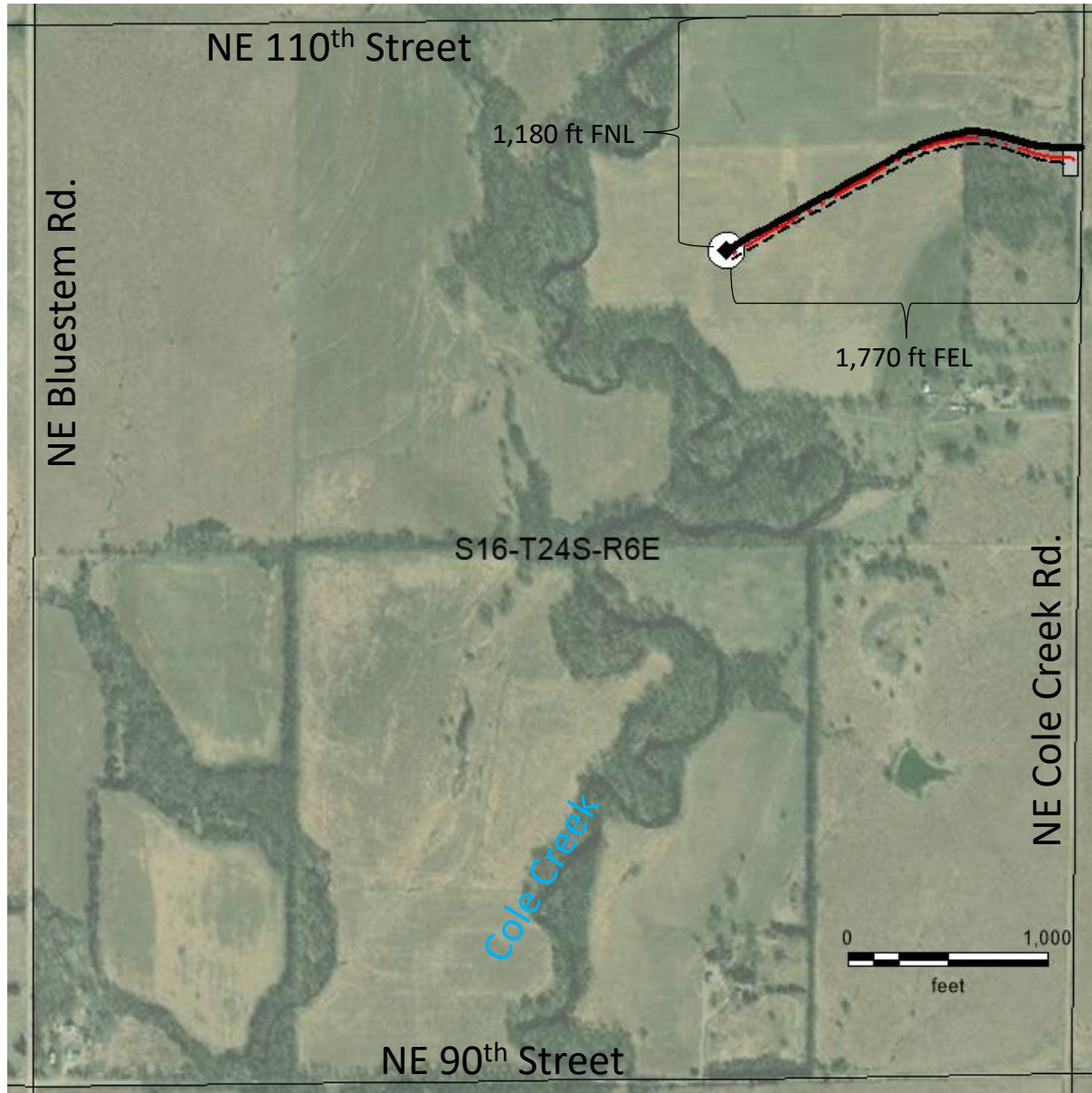
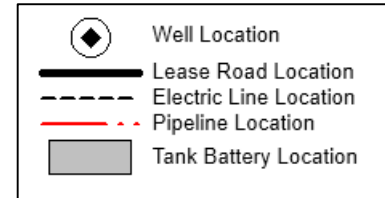


Blue Ox Partners LLC, Kansas Operator License #35676  
Plat For Kansas Notice Of Intent To Drill: Form C-1 (Correction, 10-24-19)



Stackley #1: Well, Lease Road, Electric Line,  
Pipeline and Tank Battery Locations  
SWSEWNE Sec 16 T24S R6E, Butler Co., Kansas  
Lat: 37.966722 Long: -96.773919  
UTM NAD 27 zone 14 S: 695549 E 4204254 N

Map Explanation



BLUE OX PARTNERS