

Fall & Associates

Stake and Elevation Service

P.O. Box 222

Pretty Prairie, KS. 67570

785-243-7506

Date 10-28-19

Invoice Number 1021191

MURFIN DRILLING

1-34

Nelson 'A'

Operator

Number

Farm Name

Rawlins-KS

34

4s

33w

660'FNL 1320'FWL

County-State

S

T

R

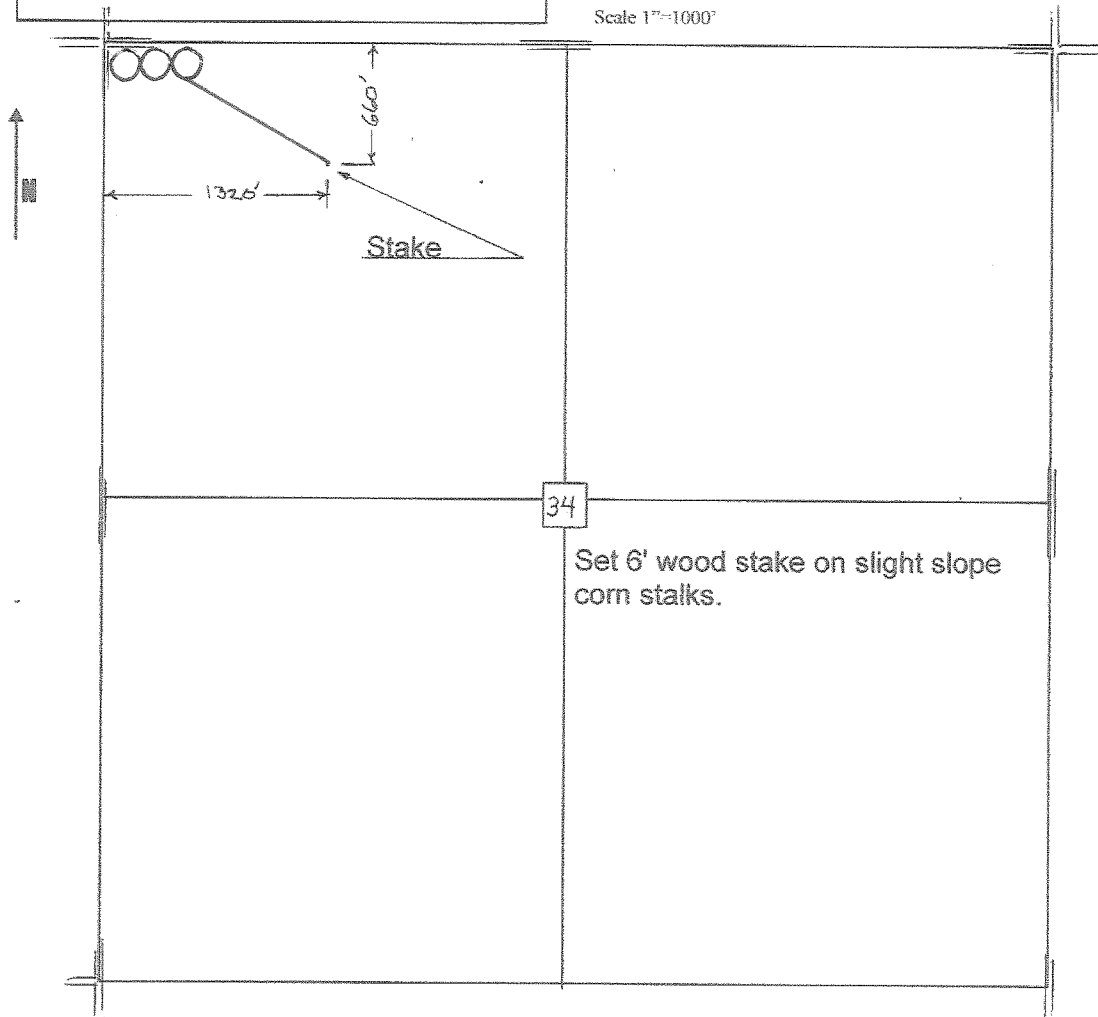
Location

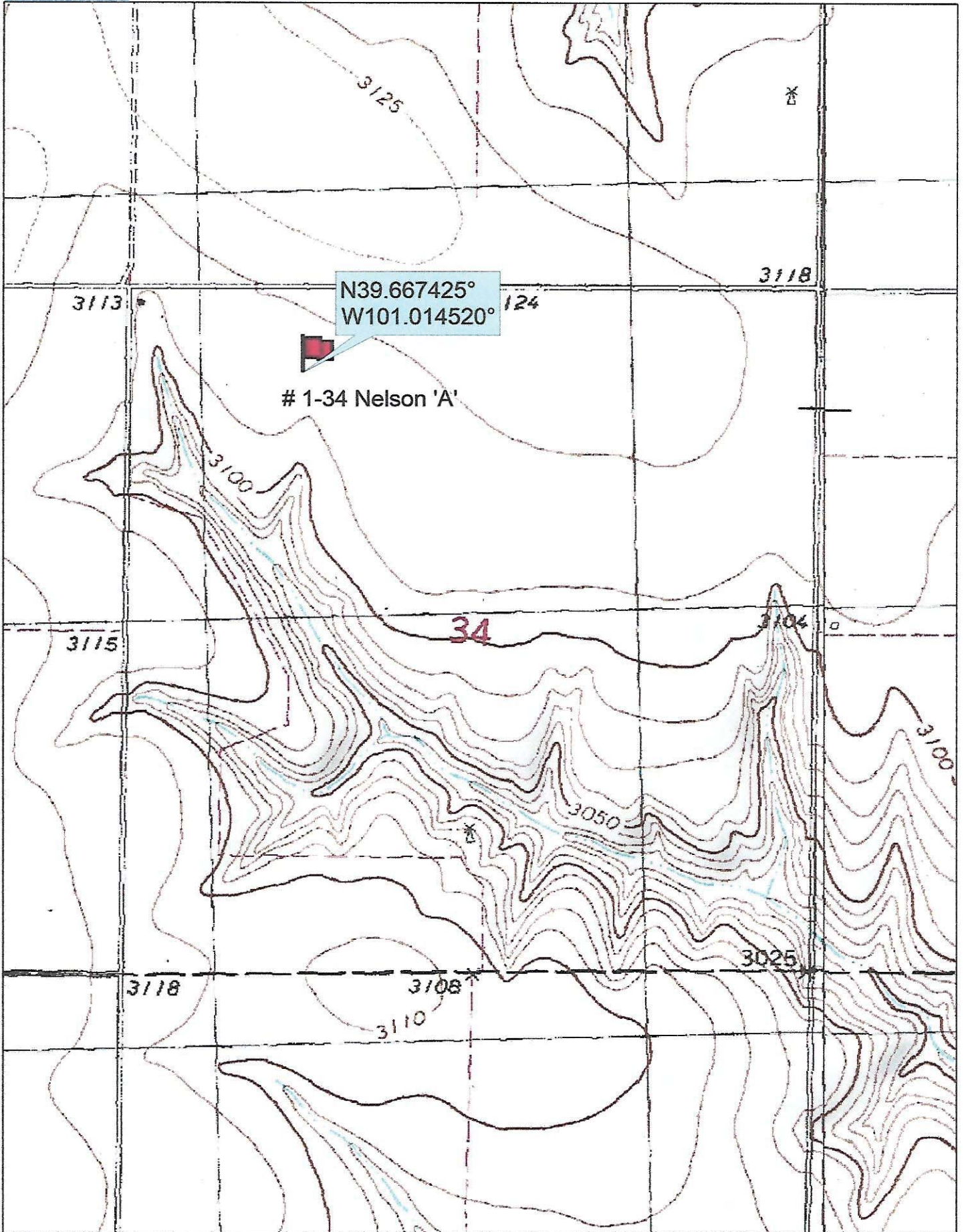
Murfin Drilling
250 N. Water
Suite 300
Wichita, Ks. 67202

Elevation 3113 Gr.

Ordered By: Shauna

Scale 1"=1000'





N39.667425°
W101.014520°

1-34 Nelson 'A'

34

