



"THE NEXT GENERATION OF ENERGY"

Scale 1:240 Imperial

Well Name: A.B. Fisher #14-1
 Surface Location: Sec. 14 - T5S - R37W
 Bottom Location:
 API: 15-023-21505-0000
 License Number: 34917
 Spud Date: 1/23/2019 Time: 3:30 PM
 Region: Cheyenne County
 Drilling Completed: 1/31/2019 Time: 1:00 PM
 Surface Coordinates: 1956' FSL & 615' FWL
 Bottom Hole Coordinates:
 Ground Elevation: 3372.00ft
 K.B. Elevation: 3377.00ft
 Logged Interval: 3800.00ft To: 4960.00ft
 Total Depth: 4960.00ft
 Formation: Mississippian
 Drilling Fluid Type: Chemical/Fresh Water Gel

OPERATOR

Company: Bickle Energies, LLC
 Address: P.O. Box 816
 Hays, KS 67601
 Contact Geologist:
 Contact Phone Nbr: 785-639-1681
 Well Name: A.B. Fisher #14-1
 Location: Sec. 14 - T5S - R37W
 API: 15-023-21505-0000
 Pool: Field: Wildcat
 State: Kansas Country: USA

SURFACE CO-ORDINATES

Well Type: Vertical
 Longitude: -101.448233194
 Latitude: 39.617358349
 N/S Co-ord: 1956' FSL
 E/W Co-ord: 615' FWL

LOGGED BY

Keith Reavis
Consulting Geologist

Company: Keith Reavis, Inc.
 Address: 3420 22nd Street
 Great Bend, KS 67530
 Phone Nbr: 620-617-4091
 Logged By: KLG #136 Name: Keith Reavis

CONTRACTOR

Contractor: WW Drilling
 Rig #: 10
 Rig Type: mud rotary
 Spud Date: 1/23/2019 Time: 3:30 PM
 TD Date: 1/31/2019 Time: 1:00 PM
 Rig Release: Time:

ELEVATIONS

NOTES

Due to results of DST #3, 51/2" production was set and cemented to TD to further test the Pawnee through perforations and stimulation.

A Bloodhound gas detector operated by Bluestem Labs was employed during the drilling of this well. ROP and gas data were imported into this log from the Bloodhound system. Gamma ray and caliper curves were imported from the electrical log suite. Driller measurements averaged about 3 ft low to electrical log measurements. Drill time curve was not shifted to provide an exact match to the electrical log curves but left as recorded in the field.

Samples were saved and will be available for review at the Kansas Geological Survey Well Sample Library located in Wichita, KS.

Respectfully submitted
Keith Reavis

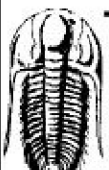
daily drilling report

DATE	7:00 AM DEPTH	REMARKS
01/26/2019		Geologist on location 1510 hrs, 3674 ft, drilling ahead
01/27/2019	4019	drilling ahead, Stotler, wiper trip @ 4019 ft, resume drilling, Topeka, Oread, Heebner, Toronto, Lansing, show in Toronto and Lansing A warrants test, short trip, ctch, TOH
01/28/2019	4262	Pulling tight in Cedar Hills, run back to bottom, spot tank mud, TOH w/bit TIH w/ tools, conduct and complete DST #1, successful test, TIH w/bit, ctch, resume drilling
01/29/2019	4462	shows and gas kicks in H and J warrant test, short trip, ctch, TOH w/bit in w/tools, conduct and complet DST #2, successful test, TIH w/bit, resume drilling, Base KC, Marmaton
01/30/2019	4652	drilling ahead, Marmaton, Pawnee, show in Pawnee warrants test, short trip, ctch, TOH w/bit TIH w/tools, conduct DST #3, successful test, TIH w/bit resume drilling, Mryrick Station
01/31/2019	4813	drilling ahead, Fort Scott, Cherokee, Mississippian, TD 4960 ft @ 1300 hrs cfs, short trip, ctch, TOH for logs, conduct and complete open hole logging operations, geologist off loc @ 2200 hrs

well comparison sheet

DRILLING WELL					COMPARISON WELL				COMPARISON WELL			
AB Fisher #14-1 1956' FSL & 615' FWL Sec 14-T5S-R37W 3377 KB					Avery #14-1 1335' FSL & 1645' FEL Sec 14-T5S-R37W 3327 KB				LD Drilling Decds #1-15 2254' FSL & 1970' FEL Sec 15-T5S-R37W 3400 KB			
					Structural Relationship				Structural Relationship			
Formation	Sample	Sub-Sea	Log	Sub-Sea	Log	Sub-Sea	Sample	Log	Log	Sub-Sea	Sample	Log
Anhydrite	3090	287	3088	289	3052	275	12	14	3097	303	-16	-14
Stotler	3920	543	3922	545	3084	557	14	12	3932	532	11	13
Topeka	4065	608	4062	605	4023	696	8	11	4072	672	16	13
Oread	4185	-808	4181	-804	4142	-815	7	11	4192	-792	-16	-12
Heebner	4201	-824	4200	-823	4162	-835	11	12	4212	-812	-12	-11
Toronto	4241	-864	4238	-861	4199	-872	8	11	4248	-848	-16	-13
Lansing	4254	-877	4252	-875	4212	-885	8	10	4262	-862	-15	-13
Lansing D	4303	-926	4302	-925	4260	-933	7	8	4313	-913	-13	-12
Lansing G	4358	901	4356	979	4315	908	7	9	4364	964	17	15
Stark Shale	4458	-1081	4454	-1077	4415	-1088	7	11	4465	-1065	-16	-12
Base KC	4534	-1157	4532	-1155	4493	-1166	9	11	4544	-1144	-13	-11
Marmaton	4544	-1167	4548	-1171	4506	-1179	12	8	4556	-1156	-11	-15
Pawnee	4639	-1262	4636	-1259	4597	-1270	8	11	4652	-1252	-10	-7
Myrick Station	4665	-1288	4662	-1285	4624	-1297	9	12	4675	-1275	-13	-10
Fort Scott	4700	-1323	4698	-1321	4658	-1331	8	10	4706	-1306	-17	-15
Cherokee	4723	-1346	4720	-1343	4680	-1353	7	10	4729	-1329	-17	-14
Mississippian	4940	1563	4940	1563	4885	1550	5	5	4951	1551	12	12
Total Depth	4960	-1583	4959	-1582	4955	-1628	45	46	5048	-1648	65	66

Drill Stem Test #1

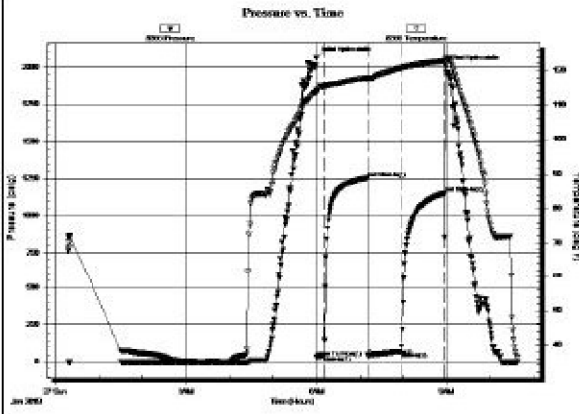
 <p>TRIOBITE TESTING, INC.</p>	DRILL STEM TEST REPORT	
	Bicke Energy LLC. PO Box 816 Hays KS 67601 ATTN: Keith Reavis	14-5S-37W Cheyenne KS A.B. Fisher #14-1 Job Ticket: 65281 DST#:1 Test Start: 2019.01.27 @ 00:19:00

GENERAL INFORMATION:

Formation: **Toronto - LKC "A"**
 Deviated: No Whipstock: 0.00 ft (KB)
 Time Tool Opened: 06:00:30
 Time Test Ended: 10:37:49
 Test Type: Conventional Bottom Hole (Initial)
 Tester: Ryan Nichols
 Unit No: 71
 Interval: **4200.00 ft (KB) To 4262.00 ft (KB) (TVD)**
 Total Depth: 4262.00 ft (KB) (TVD)
 Hole Diameter: 7.88 inches -hole Condition: Good
 Reference Elevations: 3377.00 ft (KB)
 3372.00 ft (CF)
 KB to GR/CF: 5.00 ft

Serial #: 8366 Outside
 Press@RunDepth: 70.65 psig @ 4201.00 ft (KB)
 Start Date: 2019.01.27 End Date: 2019.01.27
 Start Time: 00:19:01 End Time: 10:37:49
 Capacity: 8000.00 psig
 Last Calib.: 2019.01.28
 Time On Btm: 2019.01.27 @ 06:00:09
 Time Off Btm: 2019.01.27 @ 08:58:10

TEST COMMENT: 10 IF - Slid 6' blow built to 3"
 60 ISI - No return
 45 FF - Bbow built to 2"
 60 FSI - No return



PRESSURE SUMMARY			
Time (Mn.)	Pressure (psig)	Temp (deg F)	Annotation
0	2060.09	114.18	Initial Hydro-static
1	32.08	113.61	Open To Flow (1)
10	41.99	115.31	Shut-In(1)
71	1253.55	117.95	End Shut-In(1)
71	44.37	117.23	Open To Flow (2)
117	70.65	120.70	Shut-In(2)
177	1151.35	122.81	End Shut-In(2)
179	2000.63	123.37	Final Hydro-static

Recovery		
Length (ft)	Description	Volume (bbl)
120.00	OCM - 10%- 90%M	0.59
2.00	Oil 100%	0.03

Gas Rates			
	Choke (Inches)	Pressure (psig)	Gas Rate (McfD)

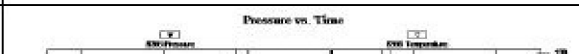
Drill Stem Test #2

	DRILL STEM TEST REPORT	
	Bicke Energy LLC	14-5S-37W Cheyenne KS
	P.O. Box 816 Hays KS 67601	A.B. Fisher #14-1 Job Ticket: 65282 DST#: 2 Test Start: 2019.01.29 @ 08:51:00
ATTN: Keith Reavis		

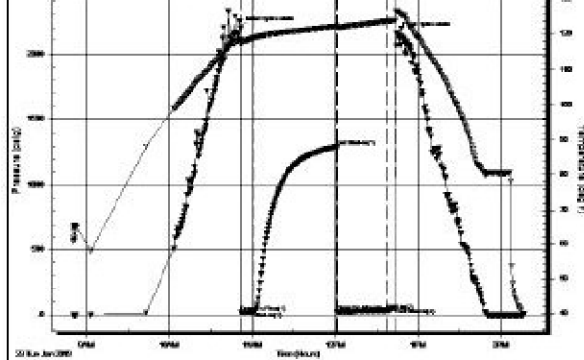
GENERAL INFORMATION:
 Formation: **LKC "H - J"**
 Deviated: No Whipstock: 0.00 ft (KB)
 Time Tool Opened: 10:51:40
 Time Test Ended: 14:16:09
 Test Type: Conventional Bottom Hole (Reset)
 Tester: Ryan Nichols
 Unit No: 71
 Interval: **4380.00 ft (KB) To 4462.00 ft (KB) (TVD)**
 Total Depth: 4462.00 ft (KB) (TVD)
 Hole Diameter: 7.88 inches -hole Condition: Good
 Reference Elevations: 3377.00 ft (KB)
 3372.00 ft (CF)
 KB to GR/CF: 5.00 ft

Serial #: 8366 Outside
 Press@RunDepth: 32.50 psig @ 4381.00 ft (KB)
 Start Date: 2019.01.29 End Date: 2019.01.29
 Start Time: 08:51:01 End Time: 14:16:10
 Capacity: 8000.00 psig
 Last Calib.: 2019.01.29
 Time On Btm: 2019.01.29 @ 10:51:30
 Time Off Btm: 2019.01.29 @ 12:44:50

TEST COMMENT: 10 IF - Blow built to 1"
 60 ISI - Weak surface blow
 35 FF - Blow built to 1"
 5 FSI - No return



PRESSURE SUMMARY			
Time	Pressure	Temp	Annotation



(Mn.)	(psig)	(deg F)	Annotation
0	2196.72	118.20	Initial Hydro-static
1	16.76	117.43	Open To Flow (1)
11	20.51	118.94	Shut-In(1)
70	1294.95	122.20	End Shut-In(1)
71	23.33	121.61	Open To Flow (2)
106	32.50	123.67	Shut-In(2)
113	54.91	123.98	End Shut-In(2)
114	2155.61	126.67	Final Hydro-static

Recovery

Length (ft)	Description	Volume (bbl)
15.00	Mud w trace oil 100%M	0.07

* Recovery from multiple tests

Gas Rates

Choke (inches)	Pressure (psig)	Gas Rate (McfD)

Drill Stem Test #3

TRILOBITE TESTING, INC.

DRILL STEM TEST REPORT

Bickle Energy LLC. 14-5S-37W Cheyenne KS

P.O. Box 816 A.B. Fisher #14-1
Hays KS 67601 Job Ticket: 65283 DST#: 3

ATTN: Keith Reavis Test Start: 2019.01.30 @ 09:29:00

GENERAL INFORMATION

Formation: **Pawnee**
 Deviated: No Whipstock: 0.00 ft (KB)
 Time Tool Opened: 11:45:40
 Time Test Ended: 18:29:40

Interval: **4620.00 ft (KB) To 4652.00 ft (KB) (TVD)**
 Total Depth: 4652.00 ft (KB) (TVD)
 Hole Diameter: 7.88 inches - hole Condition: Good

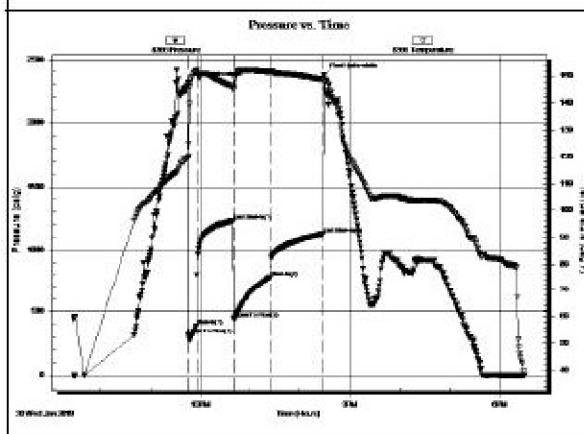
Test Type: Conventional Bottom Hole (Reset)
 Tester: Ryan Nichols
 Unit No: 71
 Reference Bevatons: 3377.00 ft (KB)
 3372.00 ft (CF)
 KB to GR/CF: 5.00 ft

Serial #: 8366 Outside

Press@RunDepth: 785.32 psig @ 4621.00 ft (KB)
 Start Date: 2019.01.30 End Date: 2019.01.30
 Start Time: 09:29:01 End Time: 18:29:40

Capacity: 8000.00 psig
 Last Calib.: 2019.01.30
 Time On Btm: 2019.01.30 @ 11:45:20
 Time Off Btm: 2019.01.30 @ 14:29:00

TEST COMMENT: 10 IF - BoB @ 50 seconds
 45 ISI - BoB @ 10 mins
 45 FF - BoB @ 1min gas to surface @ 40 mins
 60 FSI - BoB @ 8 mins



PRESSURE SUMMARY

Time (Mn.)	Pressure (psig)	Temp (deg F)	Annotation
0	2317.38	119.49	Initial Hydro-static
1	321.04	120.07	Open To Flow (1)
11	389.65	151.92	Shut-In(1)
55	1230.04	146.33	End Shut-In(1)
56	444.61	145.18	Open To Flow (2)
100	785.32	151.68	Shut-In(2)
164	1129.20	148.66	End Shut-In(2)
164	2377.49	148.15	Final Hydro-static

Recovery

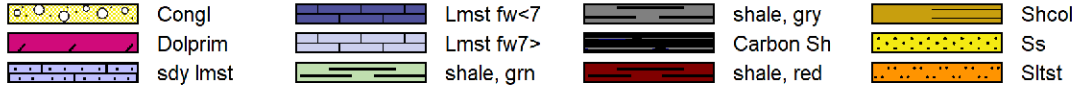
Length (ft)	Description	Volume (bbl)
120.00	MCW - 20%M - 80%W	0.59
1880.00	GO - 40%G - 60%o	26.37
0.00	2500' GIP	0.00

Gas Rates

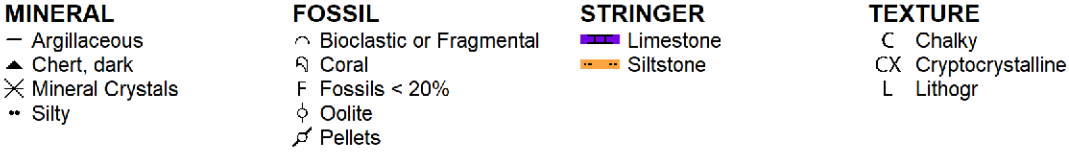
Choke (inches)	Pressure (psig)	Gas Rate (McfD)

* Recovery from multiple tests

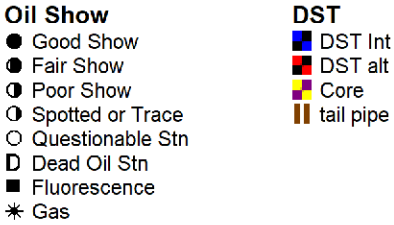
ROCK TYPES



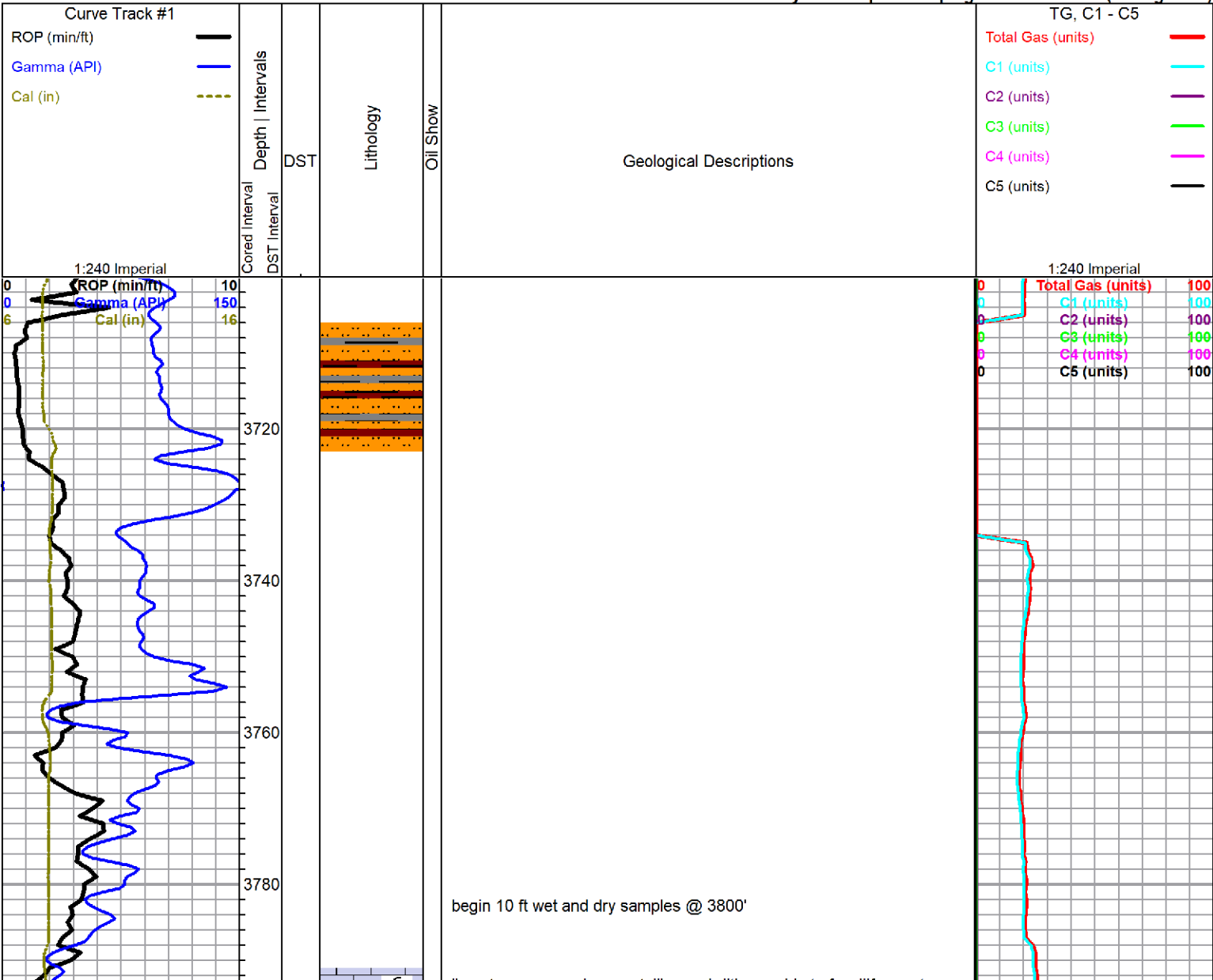
ACCESSORIES

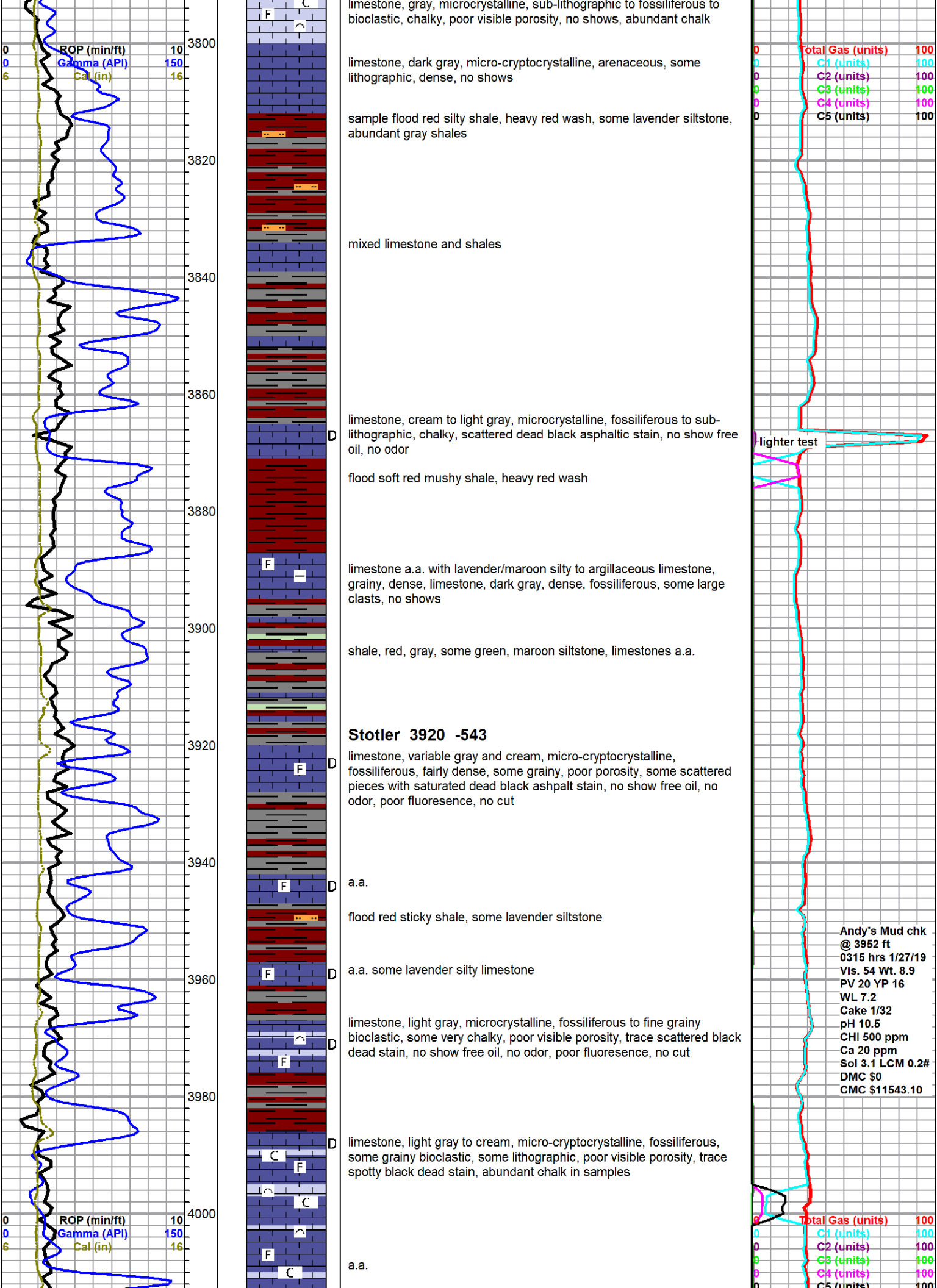


OTHER SYMBOLS



Printed by GEOstrip VC Striplog version 4.0.8.15 (www.grsi.ca)





ROP (min/ft) 10
 Gamma (API) 150
 Cal (in) 16

Total Gas (units) 100
 C1 (units) 100
 C2 (units) 100
 C3 (units) 100
 C4 (units) 100
 C5 (units) 100

limestone, gray, microcrystalline, sub-lithographic to fossiliferous to bioclastic, chalky, poor visible porosity, no shows, abundant chalk

limestone, dark gray, micro-cryptocrystalline, arenaceous, some lithographic, dense, no shows

sample flood red silty shale, heavy red wash, some lavender siltstone, abundant gray shales

mixed limestone and shales

limestone, cream to light gray, microcrystalline, fossiliferous to sub-lithographic, chalky, scattered dead black asphaltic stain, no show free oil, no odor

flood soft red mushy shale, heavy red wash

limestone a.a. with lavender/maroon silty to argillaceous limestone, grainy, dense, limestone, dark gray, dense, fossiliferous, some large clasts, no shows

shale, red, gray, some green, maroon siltstone, limestones a.a.

Stotler 3920 -543

limestone, variable gray and cream, micro-cryptocrystalline, fossiliferous, fairly dense, some grainy, poor porosity, some scattered pieces with saturated dead black asphalt stain, no show free oil, no odor, poor fluorescence, no cut

a.a.

flood red sticky shale, some lavender siltstone

a.a. some lavender silty limestone

limestone, light gray, microcrystalline, fossiliferous to fine grainy bioclastic, some very chalky, poor visible porosity, trace scattered black dead stain, no show free oil, no odor, poor fluorescence, no cut

limestone, light gray to cream, micro-cryptocrystalline, fossiliferous, some grainy bioclastic, some lithographic, poor visible porosity, trace spotty black dead stain, abundant chalk in samples

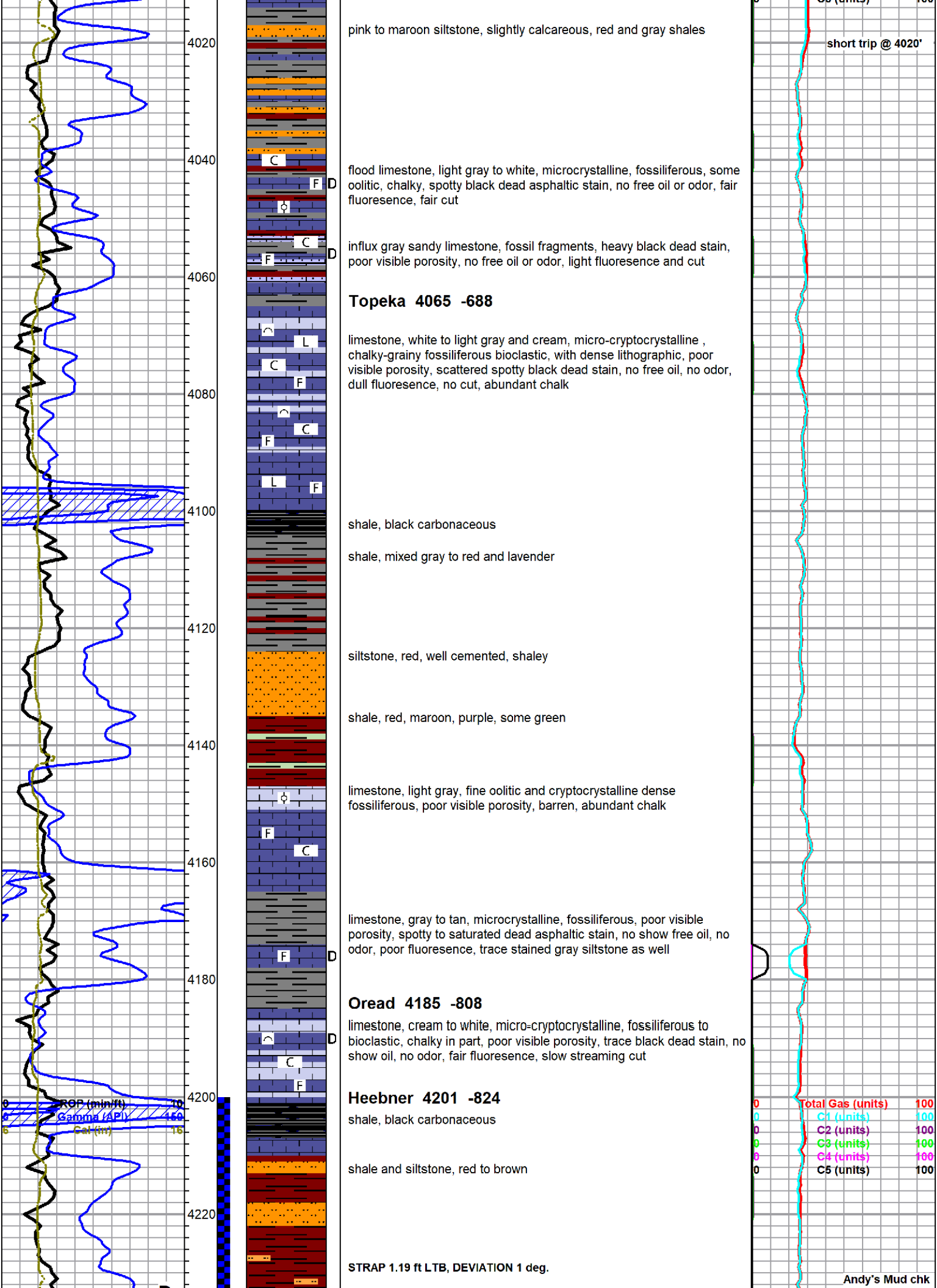
a.a.

lighter test

Andy's Mud chk
 @ 3952 ft
 0315 hrs 1/27/19
 Vis. 54 Wt. 8.9
 PV 20 YP 16
 WL 7.2
 Cake 1/32
 pH 10.5
 CHI 500 ppm
 Ca 20 ppm
 Sol 3.1 LCM 0.2#
 DMC \$0
 CMC \$11543.10

ROP (min/ft) 10
 Gamma (API) 150
 Cal (in) 16

Total Gas (units) 100
 C1 (units) 100
 C2 (units) 100
 C3 (units) 100
 C4 (units) 100
 C5 (units) 100



pink to maroon siltstone, slightly calcareous, red and gray shales

short trip @ 4020'

flood limestone, light gray to white, microcrystalline, fossiliferous, some oolitic, chalky, spotty black dead asphaltic stain, no free oil or odor, fair fluorescence, fair cut

influx gray sandy limestone, fossil fragments, heavy black dead stain, poor visible porosity, no free oil or odor, light fluorescence and cut

Topeka 4065 -688

limestone, white to light gray and cream, micro-cryptocrystalline, chalky-grainy fossiliferous bioclastic, with dense lithographic, poor visible porosity, scattered spotty black dead stain, no free oil, no odor, dull fluorescence, no cut, abundant chalk

shale, black carbonaceous

shale, mixed gray to red and lavender

siltstone, red, well cemented, shaley

shale, red, maroon, purple, some green

limestone, light gray, fine oolitic and cryptocrystalline dense fossiliferous, poor visible porosity, barren, abundant chalk

limestone, gray to tan, microcrystalline, fossiliferous, poor visible porosity, spotty to saturated dead asphaltic stain, no show free oil, no odor, poor fluorescence, trace stained gray siltstone as well

Oread 4185 -808

limestone, cream to white, micro-cryptocrystalline, fossiliferous to bioclastic, chalky in part, poor visible porosity, trace black dead stain, no show oil, no odor, fair fluorescence, slow streaming cut

Heebner 4201 -824

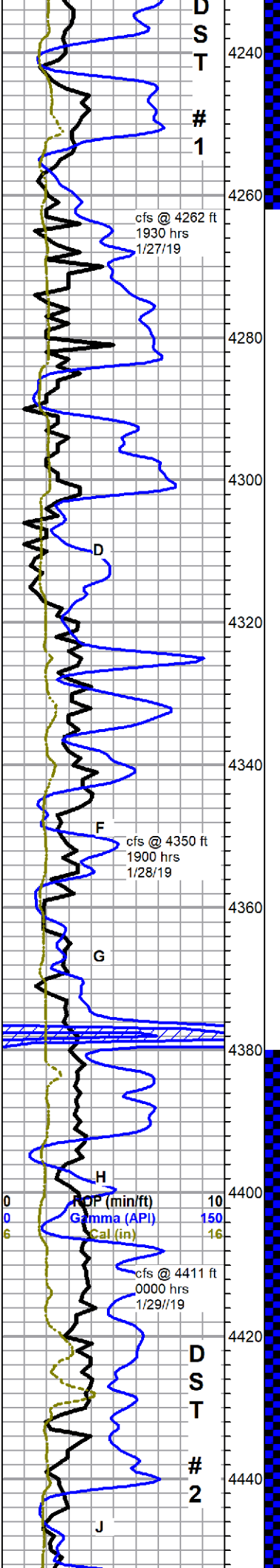
shale, black carbonaceous

shale and siltstone, red to brown

STRAP 1.19 ft LTB, DEVIATION 1 deg.

Total Gas (units) 100
 C1 (units) 100
 C2 (units) 100
 C3 (units) 100
 C4 (units) 100
 C5 (units) 100

Andy's Mud chk



Toronto 4241 -864

limestone, white to light gray, oolitic to bioclastic, good interclast porosity, saturated dark brown to black stain, good show free oil with oil floating in sample cup, fleeting odor, good fluorescence, excellent instant bright cut

Lansing 4254 -877

limestone, white to cream, micro-cryptocrystalline, fossiliferous to very fine oolitic, mostly dense, poor overall porosity, few pieces with some light spotty staining, show stringy oil on break, no odor, fair even light green fluorescence, fair slow bluish white cut

red, gray and green shales, light gray to maroon siltstone

limestone, white, mostly cryptocrystalline, chalky, fossiliferous, no visible porosity, no shows, moderate chalk

limestone, white to cream, micro-cryptocrystalline, fossiliferous, some grainy with interclast porosity, few scattered specimens with light dead black staining, no free oil, no odor, abundant chalk

grades to limestone, light gray to white, cryptocrystalline, lithographic to chalky fossiliferous, abundant chalk, barren

gray shales with limestone, lavender, fossiliferous and argillaceous, dense to chalky, no shows

limestone, light gray, much yellow and lavender mottled, oolitic to fossiliferous, poor visible porosity, chalky in part, no shows

limestone, variable gray to white, variable very fine to medium oolitic, chalky to dense, well cemented oolites to friable, some bioclastic, some interoolite porosity, barren

grading to denser white and gray fossiliferous limestones, abundant chalk in samples, no shows

4400 sample - variable shales with dark gray limestone, dense, fossiliferous, some large fragmented clasts, gray cryptocrystalline limestones, abundant chalk

limestone, light gray, recrystallized/weathered oolitic to bioclastic, spongy texture, some fair pin-point porosity, spotty edge to saturated black staining, fair show free oil, heavy, stringy, fleeting odor, fair to poor fluorescence, fair cut

grades to limestone, light gray, cryptocrystalline, fossiliferous, dense, chalky in part, barren

shales, mixed gray, silty red, lavender and green

limestone, light gray, microcrystalline, fossiliferous to bioclastic, grainy, weathered and altered in part, some secondary calcite, some interclast porosity, light brown spotty stain, slight to fair show free oil, good odor, good fluorescence, slow streaming fair cut

@ 4262 ft
1100 hrs 1/28/19
Vis. 52 Wt. 9.1
PV 20 YP 10
WL 7.2
Cake 1/32
pH 10.0
CHI 500 ppm
Ca 20 ppm
Sol 3.7 LCM 2#
DMC \$451.60
CMC \$11994.70

drill time by hand here, wind whipping geograph cable, messed up bloodhound drill time

no gas kicks this interval

drill time switched back to bloodhound

gas re-zeroed

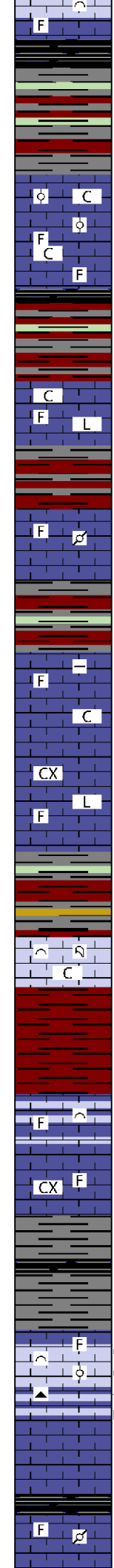
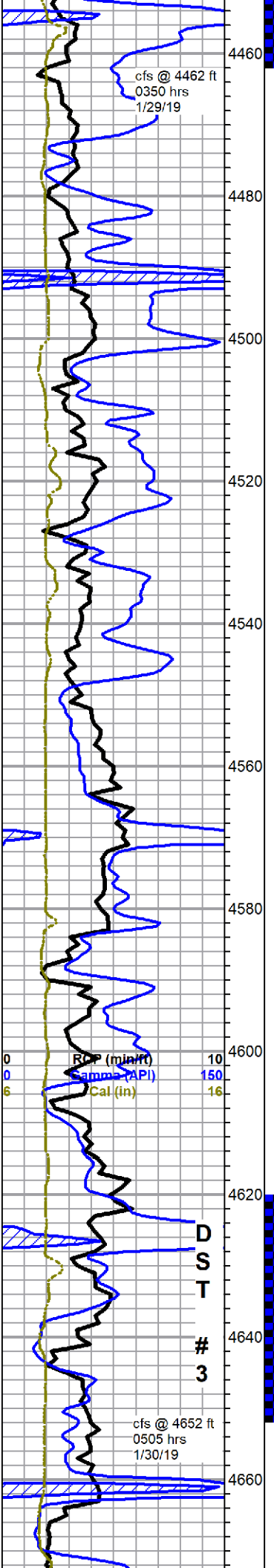
SCALE CHANGE

0	Total Gas (units)	50
0	C1 (units)	50
0	C2 (units)	50
0	C3 (units)	50
0	C4 (units)	50
0	C5 (units)	50

gas kick

0	Total Gas (units)	50
0	C1 (units)	50
0	C2 (units)	50
0	C3 (units)	50
0	recycle	50
0	C5 (units)	50

gas kick



Stark Shale 4458 -1081

limestone, light gray, re-crystallized oolitic to oolitic, poor visible porosity, with limestone, light gray, cryptocrystalline, fossiliferous to lithographic, chalky, abundant chalk in samples, no shows

limestone, light gray to cream and white, mostly cryptocrystalline, fossiliferous to lithographic, trace dense oolitic, chalky in part, abundant chalk in samples, no shows

limestone, variable gray, mixed fossiliferous, some pelletal, dense to chalky, barren

Base KC 4534 -1157

Marmaton 4544 -1167

limestone, light gray to cream and white, fossiliferous to lithographic, with: limestone, pale lavender, argillaceous, soft to dense, abundant chalk, no shows

limestones, mixed gray and tan, mostly cryptocrystalline, dense lithographic to slightly fossiliferous

limestone, cream to white, bioclastic, larges clast fragments with secondary calcite crystals, some coral fragments, flood chalk, no shows

soft red mushy shales, heavy red wash

limestone, cream, cryptocrystalline, fossiliferous to bioclastic, grainy in part, with abundant lithographic, dense, poor visible porosity, no shows

limestone, dark gray, cryptocrystalline, fossiliferous, very dense, cherty

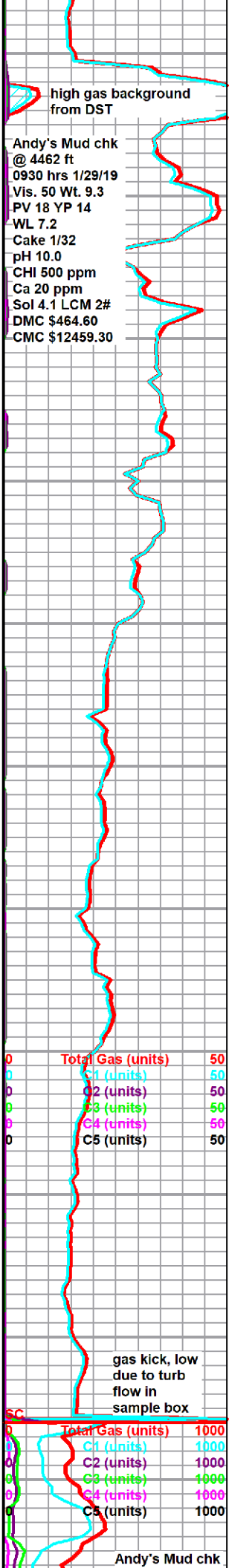
Pawnee 4639 -1262

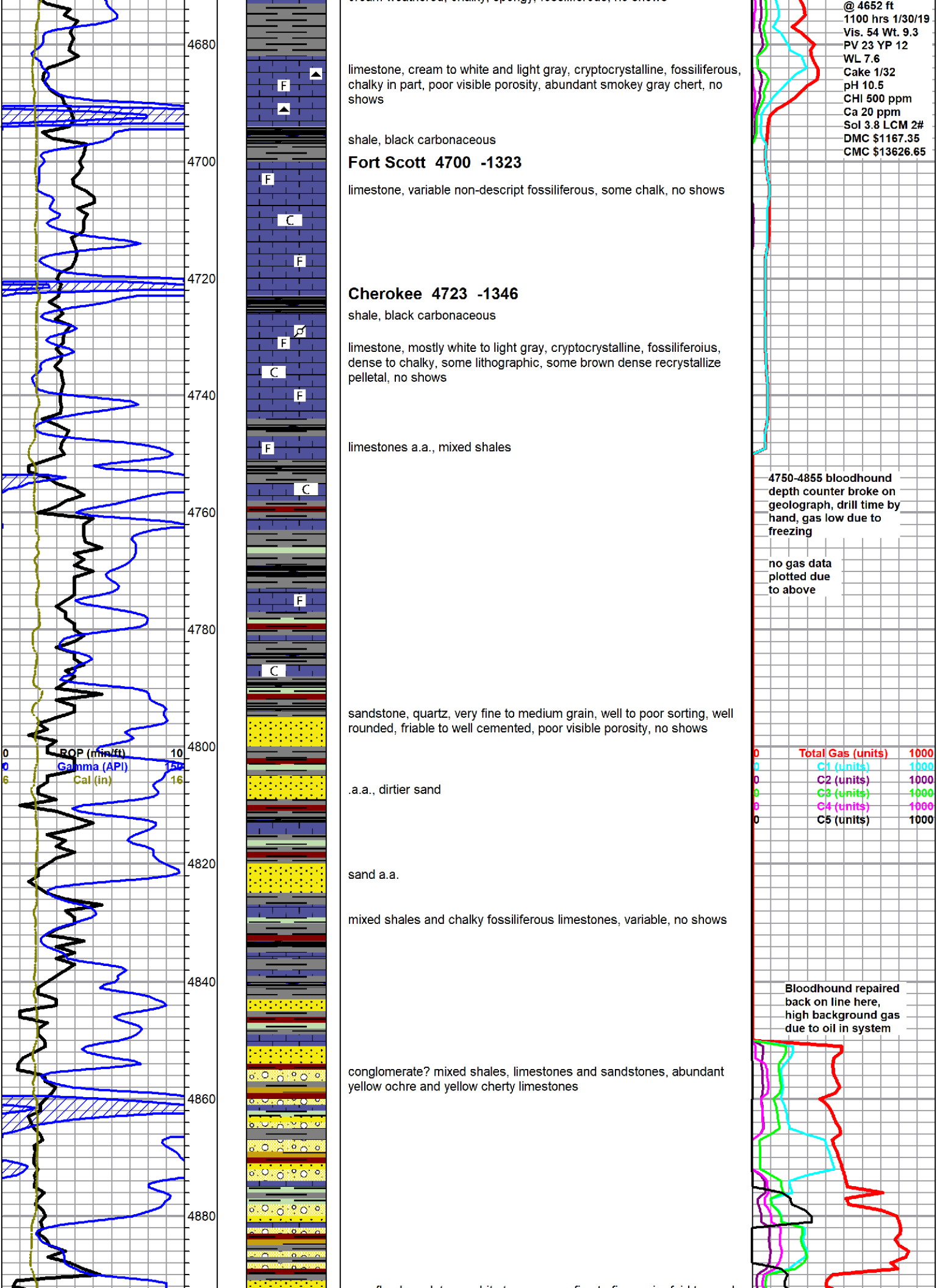
limestone, light gray, cream, white, fossiliferous to grainy bioclastic and some fine oolitic, some fair interclast-oolite porosity, very light staining, show gassy oil with streaming sheen, strong odor, good bright green fluorescence, milky blueish/white cut, with: chalky dense limestone, cream, fractured, slightly fossiliferous, trace stain and tan and gray chert

shale, black carbonaceous

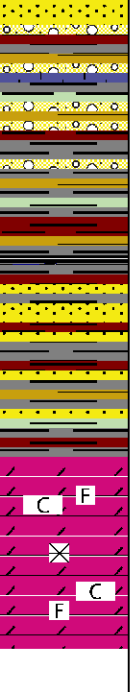
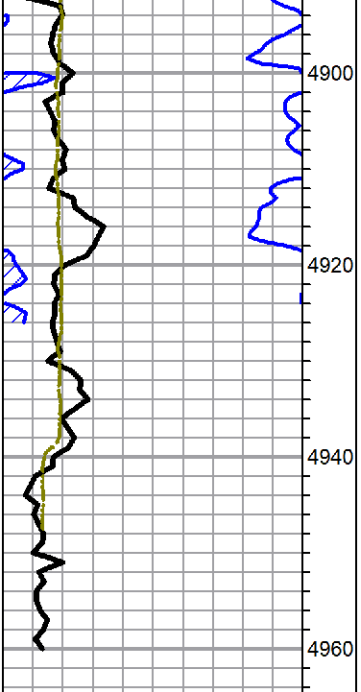
Myrick Station 4665 -1288

limestone, gray to brown mottled, green fossiliferous to pelletal, some cream weathered chalky spongy fossiliferous no shows





a.a., flood sandstone, white to gray, very fine to fine grain, fair to poorly sorted, fairly rounded, friable to well cemented, no shows



4930 sample, mostly shales

flood mixed sands

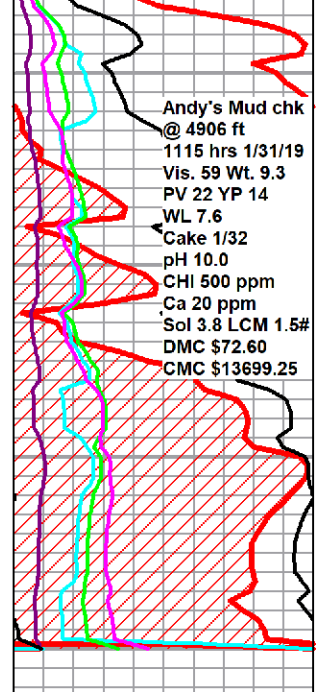
Mississippian 4940 -1563

dolomite, light gray mottled and tan, microcrystalline, sub-sucrosic, altered fossiliferous, poor visible porosity, abundant chalk, some scattered loose large dolomite crystals, no shows

Rotary TD 4960 ft @ 1300 hrs 1/31/19

Pioneer Wireline TD 4959 ft.

complete logging operation 2115 hrs 1/31/19



Andy's Mud chk
@ 4906 ft
1115 hrs 1/31/19
Vis. 59 Wt. 9.3
PV 22 YP 14
WL 7.6
Cake 1/32
pH 10.0
CHI 500 ppm
Ca 20 ppm
Sol 3.8 LCM 1.5#
DMC \$72.60
CMC \$13699.25