

**TRILOBITE
TESTING, INC.**

DRILL STEM TEST REPORT

Prepared For: **CG Oil Inc**

PO Box 207
Victoria KS 6761+0207

ATTN: Roger Fisher

Wil #1

22-13S-16W Ellis,KS

Start Date: 2019.08.04 @ 18:53:00

End Date: 2019.08.05 @ 02:38:02

Job Ticket #: 65977 DST #: 1

Trilobite Testing, Inc
1515 Commerce Parkway Hays, KS 67601
ph: 785-625-4778 fax: 785-625-5620

Printed: 2019.08.07 @ 09:54:39

CG Oil Inc
22-13S-16W Ellis,KS
Wil #1
DST # 1
LKC 'A-C'
2019.08.04



TRILOBITE TESTING, INC.

DRILL STEM TEST REPORT

TOOL DIAGRAM

CG Oil Inc
 PO Box 207
 Victoria KS 6761+0207
 ATTN: Roger Fisher

22-13S-16W Ellis,KS
Wil #1
 Job Ticket: 65977 DST#: 1
 Test Start: 2019.08.04 @ 18:53:00

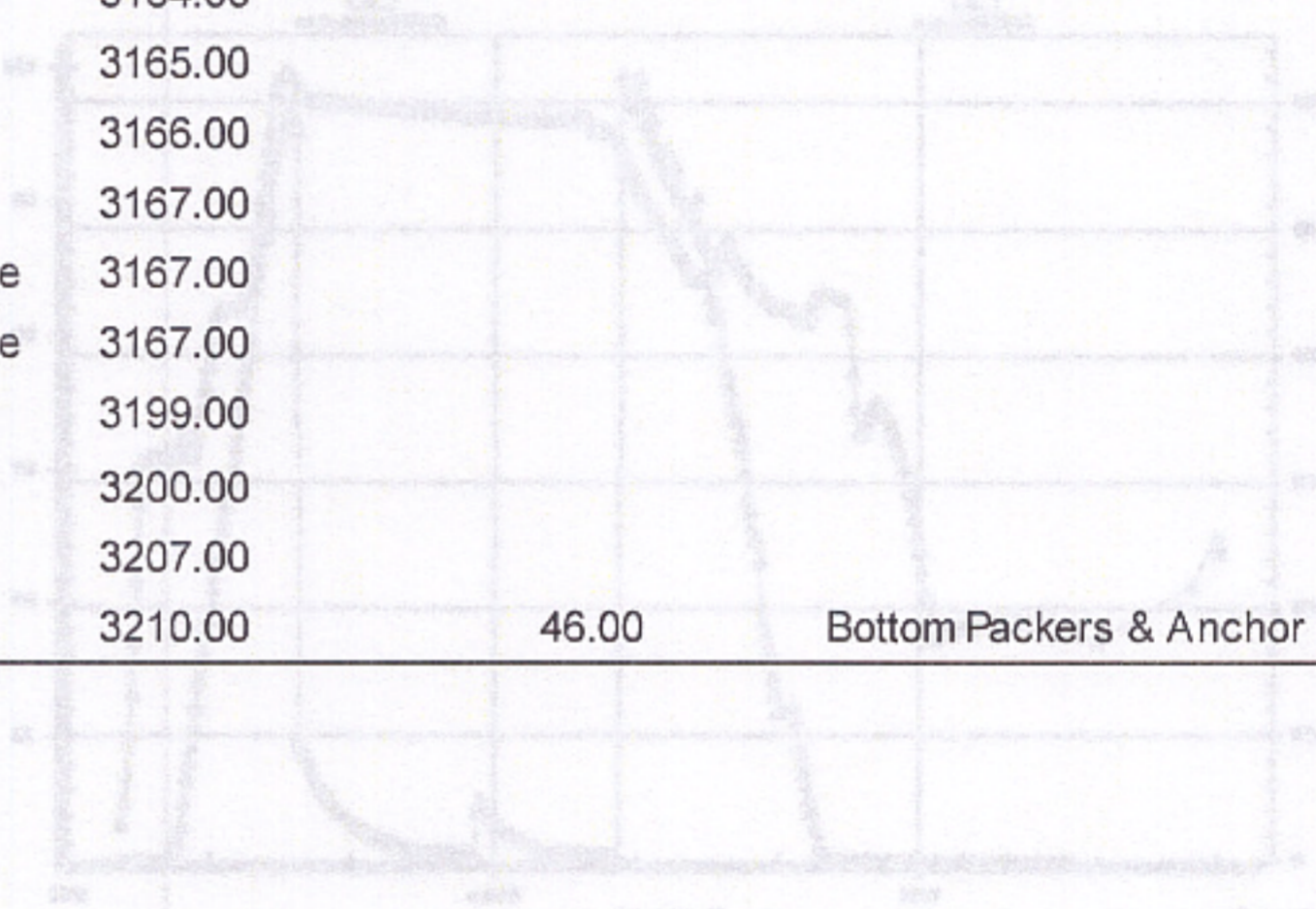
Tool Information

Drill Pipe:	Length: 3158.00 ft	Diameter: 3.82 inches	Volume: 44.77 bbl	Tool Weight: 2000.00 lb
Heavy Wt. Pipe:	Length: ft	Diameter: 2.75 inches	Volume: - bbl	Weight set on Packer: 25000.00 lb
Drill Collar:	Length: 0.00 ft	Diameter: 2.25 inches	Volume: 0.00 bbl	Weight to Pull Loose: 51000.00 lb
			<u>Total Volume: - bbl</u>	Tool Chased 4.00 ft
Drill Pipe Above KB:	15.00 ft			String Weight: Initial 43000.00 lb
Depth to Top Packer:	3164.00 ft			Final 43000.00 lb
Depth to Bottom Packer:	ft			
Interval between Packers:	46.00 ft			
Tool Length:	67.00 ft			
Number of Packers:	1	Diameter: 6.75 inches		
Tool Comments:				

Tool Description Length (ft) Serial No. Position Depth (ft) Accum. Lengths

Change Over Sub	1.00			3144.00	
Shut In Tool	5.00			3149.00	
Hydraulic tool	5.00			3154.00	
Packer	5.00			3159.00	21.00 Bottom Of Top Packer
Packer	5.00			3164.00	
Stubb	1.00			3165.00	
Perforations	1.00			3166.00	
Change Over Sub	1.00			3167.00	
Recorder	0.00	8374	Inside	3167.00	
Recorder	0.00	8372	Inside	3167.00	
Drill Pipe	32.00			3199.00	
Change Over Sub	1.00			3200.00	
Perforations	7.00			3207.00	
Bullnose	3.00			3210.00	46.00 Bottom Packers & Anchor

Total Tool Length: 67.00

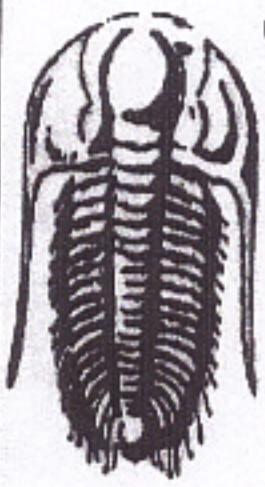


Gas Rates

Order (scfm)	Pressure (psig)	Gas Rate (scfm)

Recovery

Length (ft)	Volume (bbl)	Recovery (%)
30.00	0.43	
0.00	0.00	



**TRILOBITE
TESTING, INC.**

DRILL STEM TEST REPORT

FLUID SUMMARY

CG Oil Inc
PO Box 207
Victoria KS 6761+0207
ATTN: Roger Fisher

22-13S-16W Ellis,KS
Wil #1
Job Ticket: 65977 **DST#: 1**
Test Start: 2019.08.04 @ 18:53:00

Mud and Cushion Information

Mud Type: Gel Chem	Cushion Type:	Oil API:	deg API
Mud Weight: 9.00 lb/gal	Cushion Length: ft	Water Salinity:	ppm
Viscosity: 60.00 sec/qt	Cushion Volume: bbl		
Water Loss: 12.38 in ³	Gas Cushion Type:		
Resistivity: ohm.m	Gas Cushion Pressure: psig		
Salinity: 14200.00 ppm			
Filter Cake: inches			

Recovery Information

Recovery Table

Length ft	Description	Volume bbl
30.00	GVSOCM 7%G 3%O 90%M	0.425
0.00	30' GIP 100%G	0.000

Total Length: 30.00 ft Total Volume: 0.425 bbl
Num Fluid Samples: 0 Num Gas Bombs: 0 Serial #:
Laboratory Name: Laboratory Location:
Recovery Comments: 2#LCM

Serial #: 8374

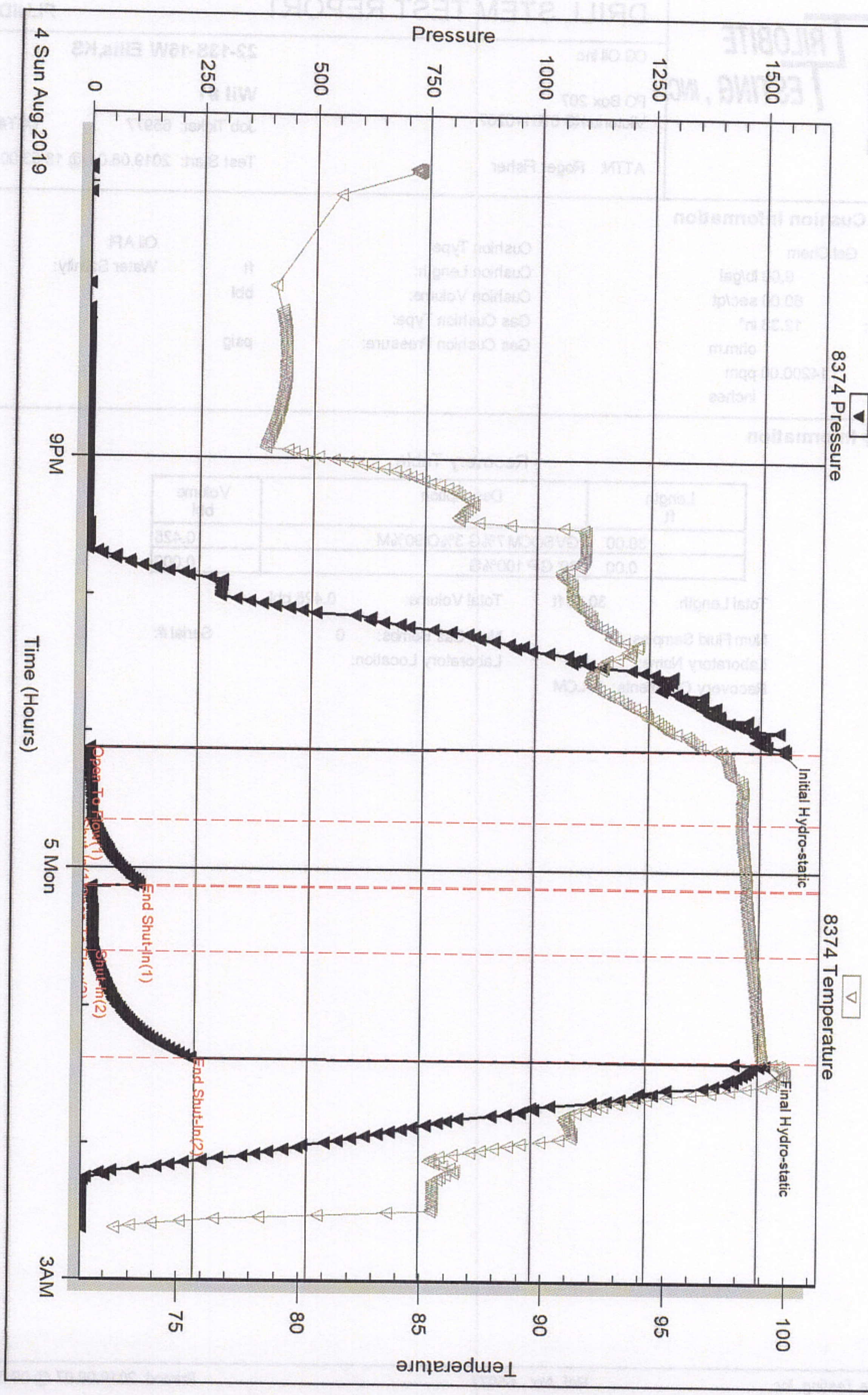
Inside

CG Oil Inc

Well #1

DST Test Number: 1

Pressure vs. Time



Trilobite Testing, Inc

Ref. No: 65977

Printed: 2019.08.07 @ 09:54:41

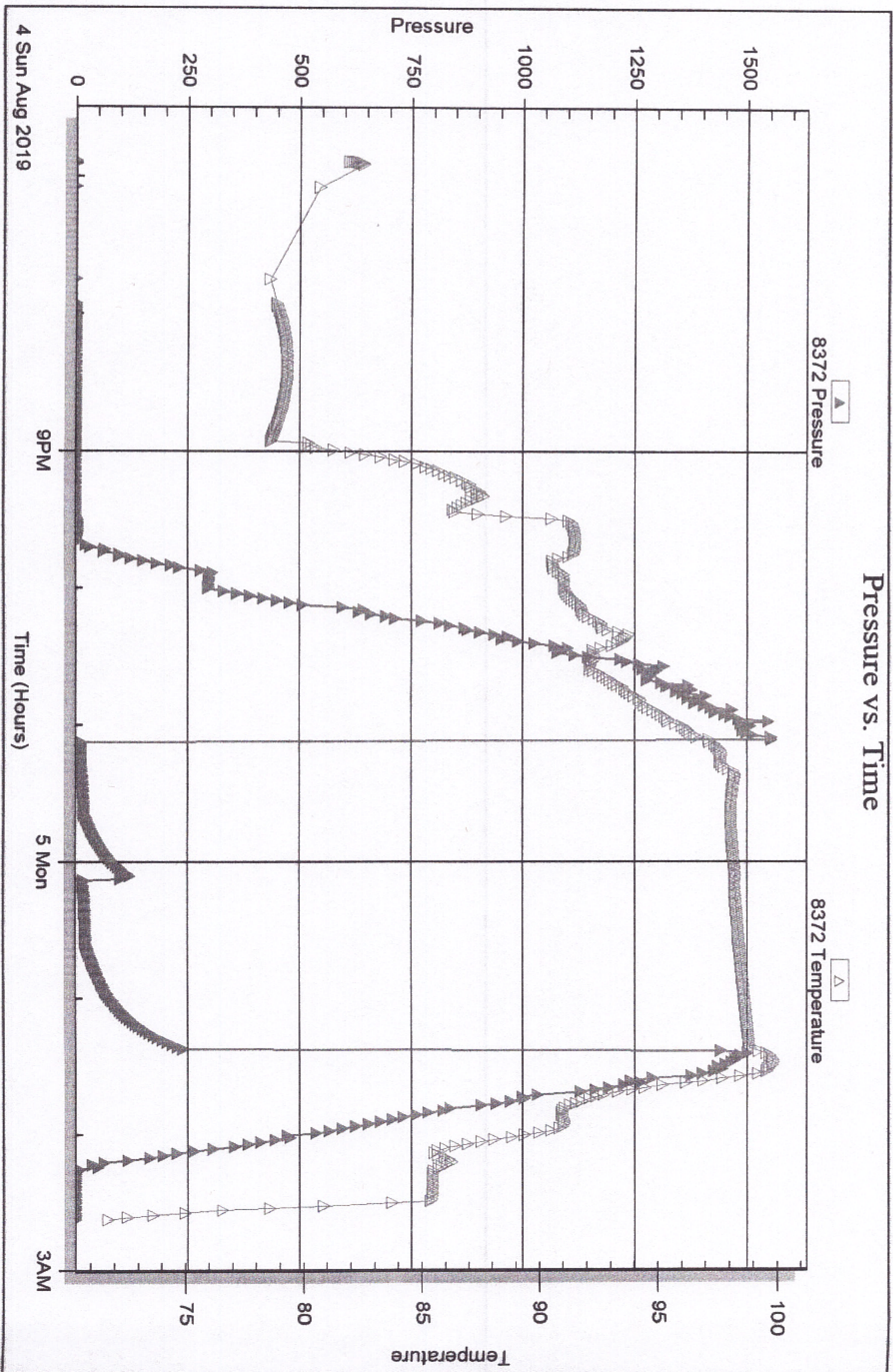
Serial #: 8372

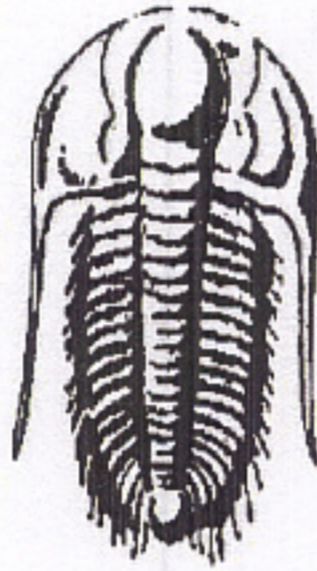
Inside

CG Oil Inc

Well #1

DST Test Number: 1





**TRILOBITE
TESTING, INC.**

DRILL STEM TEST REPORT

Prepared For: **CG Oil Inc**

PO Box 207
Victoria KS 6761+0207

ATTN: Roger Fisher

Wil #1

22-13S-16W Ellis,KS

Start Date: 2019.08.05 @ 10:06:00

End Date: 2019.08.05 @ 14:45:17

Job Ticket #: 65978 DST #: 2

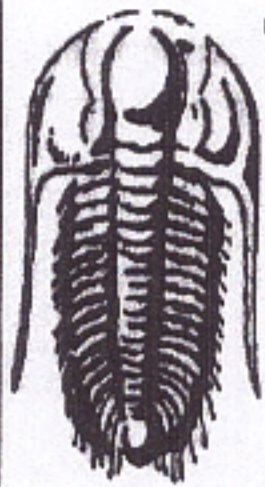
Trilobite Testing, Inc

1515 Commerce Parkway Hays, KS 67601

ph: 785-625-4778 fax: 785-625-5620

Printed: 2019.08.07 @ 09:54:11

CG Oil Inc
22-13S-16W Ellis,KS
Wil #1
DST # 2
LKC 'D-F'
2019.08.05



**TRILOBITE
TESTING, INC.**

DRILL STEM TEST REPORT

TOOL DIAGRAM

CG Oil Inc
PO Box 207
Victoria KS 6761+0207
ATTN: Roger Fisher

22-13S-16W Ellis,KS
Wil #1
Job Ticket: 65978 **DST#: 2**
Test Start: 2019.08.05 @ 10:06:00

Tool Information

Drill Pipe:	Length: 3221.00 ft	Diameter: 3.82 inches	Volume: 45.66 bbl	Tool Weight: 2000.00 lb
Heavy Wt. Pipe:	Length: ft	Diameter: 2.75 inches	Volume: - bbl	Weight set on Packer: 25000.00 lb
Drill Collar:	Length: 0.00 ft	Diameter: 2.25 inches	Volume: 0.00 bbl	Weight to Pull Loose: 48000.00 lb
			<u>Total Volume: - bbl</u>	Tool Chased ft
Drill Pipe Above KB:	26.00 ft			String Weight: Initial 45000.00 lb
Depth to Top Packer:	3216.00 ft			Final 45000.00 lb
Depth to Bottom Packer:	ft			
Interval between Packers:	49.00 ft			
Tool Length:	70.00 ft			
Number of Packers:	1	Diameter: 6.75 inches		

Tool Comments:

Tool Description	Length (ft)	Serial No.	Position	Depth (ft)	Accum. Lengths
Change Over Sub	1.00			3196.00	
Shut In Tool	5.00			3201.00	
Hydraulic tool	5.00			3206.00	
Packer	5.00			3211.00	21.00 Bottom Of Top Packer
Packer	5.00			3216.00	
Stubb	1.00			3217.00	
Perforations	1.00			3218.00	
Change Over Sub	1.00			3219.00	
Recorder	0.00	8374	Inside	3219.00	
Recorder	0.00	8372	Inside	3219.00	
Drill Pipe	32.00			3251.00	
Change Over Sub	1.00			3252.00	
Perforations	10.00			3262.00	
Bullnose	3.00			3265.00	49.00 Bottom Packers & Anchor

Total Tool Length: 70.00



**TRILOBITE
TESTING, INC.**

DRILL STEM TEST REPORT

FLUID SUMMARY

CG Oil Inc
PO Box 207
Victoria KS 6761+0207
ATTN: Roger Fisher

22-13S-16W Ellis,KS
Wil #1
Job Ticket: 65978 DST#: 2
Test Start: 2019.08.05 @ 10:06:00

Mud and Cushion Information

Mud Type: Gel Chem	Cushion Type:	Oil API:	deg API
Mud Weight: 9.00 lb/gal	Cushion Length: ft	Water Salinity:	ppm
Viscosity: 56.00 sec/qt	Cushion Volume: bbl		
Water Loss: 12.39 in ³	Gas Cushion Type:		
Resistivity: ohm.m	Gas Cushion Pressure: psig		
Salinity: 14000.00 ppm			
Filter Cake: inches			

Recovery Information

Recovery Table

Length ft	Description	Volume bbl
25.00	OSM 100%M	0.354

Total Length: 25.00 ft Total Volume: 0.354 bbl

Num Fluid Samples: 0 Num Gas Bombs: 0 Serial #:
Laboratory Name: Laboratory Location:
Recovery Comments: 2#LCM

Serial #: 8374

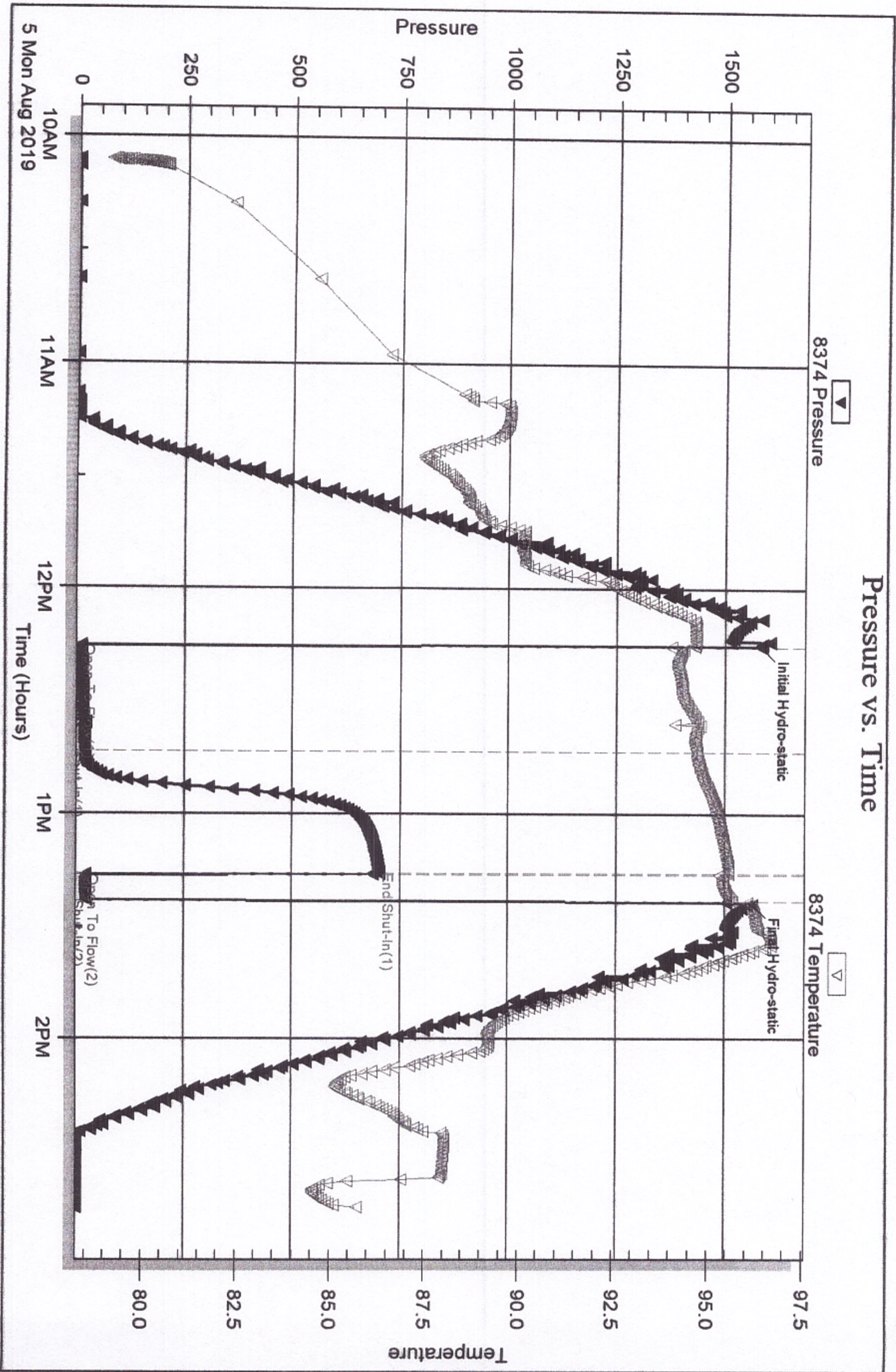
Inside

CG Oil Inc

Well #1

DST Test Number: 2

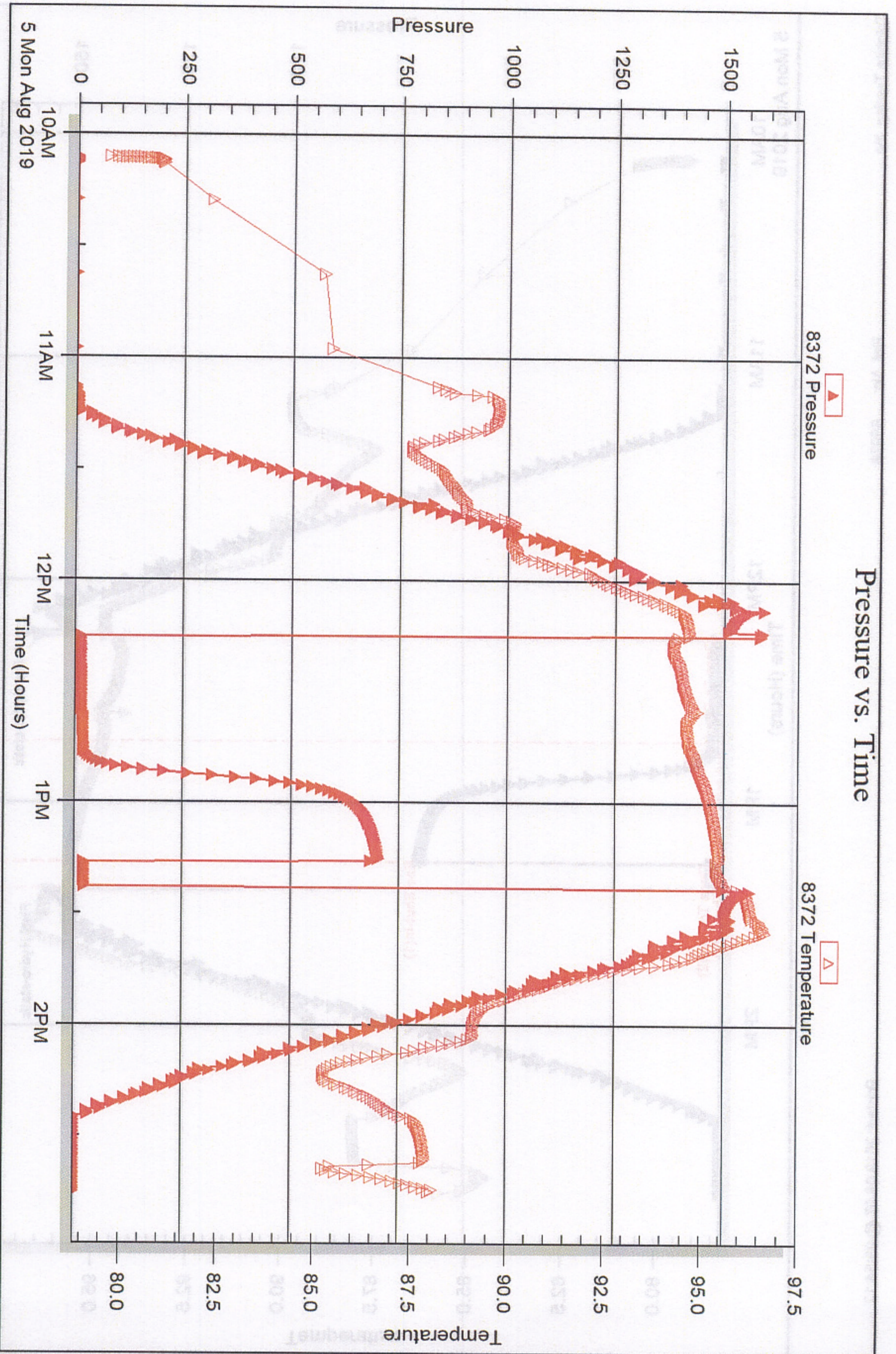
Pressure vs. Time

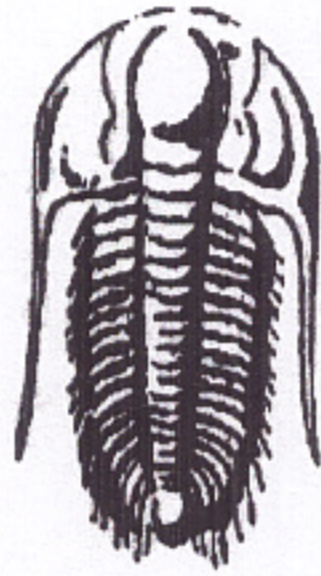


Triobite Testing, Inc

Ref. No: 65978

Printed: 2019.08.07 @ 09:54:12





**TRILOBITE
TESTING, INC.**

DRILL STEM TEST REPORT

Prepared For: **CG Oil Inc**

PO Box 207
Victoria KS 6761+0207

ATTN: Roger Fisher

Wil #1

22-13S-16W Ellis,KS

Start Date: 2019.08.06 @ 02:13:00

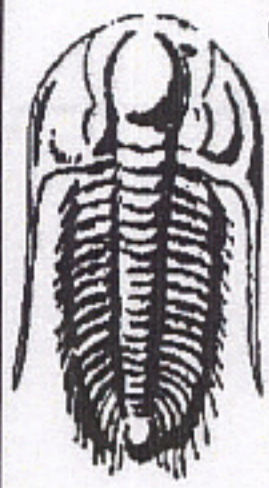
End Date: 2019.08.06 @ 06:54:17

Job Ticket #: 65979 DST #: 3

Trilobite Testing, Inc
1515 Commerce Parkway Hays, KS 67601
ph: 785-625-4778 fax: 785-625-5620

Printed: 2019.08.07 @ 09:51:26

CG Oil Inc 22-13S-16W Ellis,KS Wil #1 DST # 3 LKC 'H-J' 2019.08.06



TRILOBITE TESTING, INC.

DRILL STEM TEST REPORT

TOOL DIAGRAM

CG Oil Inc
 PO Box 207
 Victoria KS 6761+0207
 ATTN: Roger Fisher

22-13S-16W Ellis,KS
Wil #1
 Job Ticket: 65979 DST#: 3
 Test Start: 2019.08.06 @ 02:13:00

Tool Information

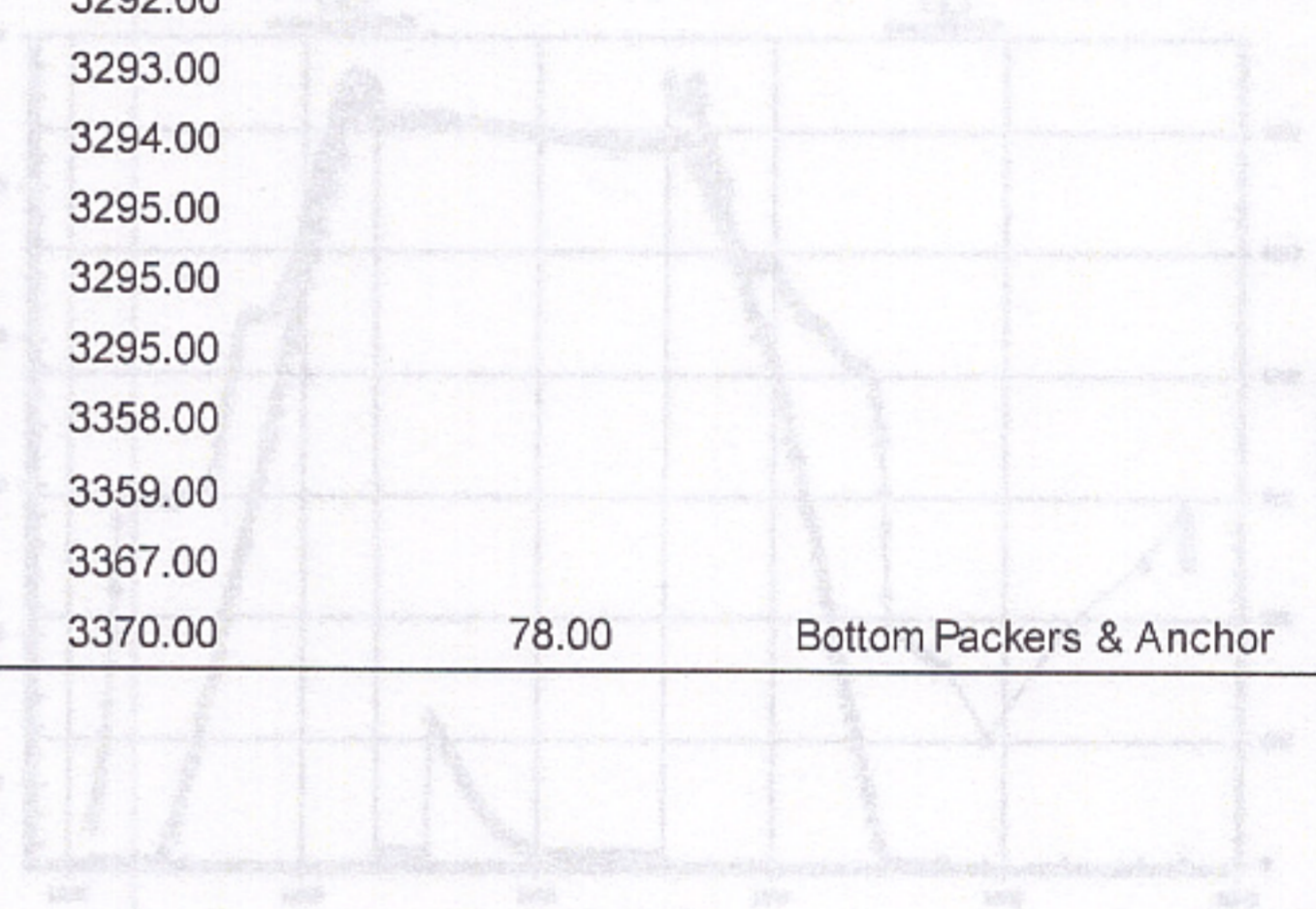
Drill Pipe:	Length: 3284.00 ft	Diameter: 3.82 inches	Volume: 46.55 bbl	Tool Weight: 2000.00 lb
Heavy Wt. Pipe:	Length: ft	Diameter: 2.75 inches	Volume: - bbl	Weight set on Packer: 25000.00 lb
Drill Collar:	Length: 0.00 ft	Diameter: 2.25 inches	Volume: 0.00 bbl	Weight to Pull Loose: 70000.00 lb
			Total Volume: - bbl	Tool Chased ft
Drill Pipe Above KB:	13.00 ft			String Weight: Initial 47000.00 lb
Depth to Top Packer:	3292.00 ft			Final 47000.00 lb
Depth to Bottom Packer:	ft			
Interval between Packers:	78.00 ft			
Tool Length:	99.00 ft			
Number of Packers:	1	Diameter: 6.75 inches		

Tool Comments:

Tool Description

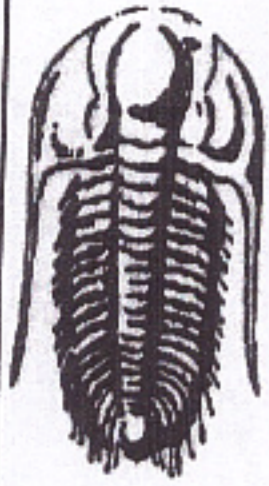
Tool Description	Length (ft)	Serial No.	Position	Depth (ft)	Accum. Lengths
Change Over Sub	1.00			3272.00	
Shut In Tool	5.00			3277.00	
Hydraulic tool	5.00			3282.00	
Packer	5.00			3287.00	21.00 Bottom Of Top Packer
Packer	5.00			3292.00	
Stubb	1.00			3293.00	
Perforations	1.00			3294.00	
Change Over Sub	1.00			3295.00	
Recorder	0.00	8374	Inside	3295.00	
Recorder	0.00	8372	Inside	3295.00	
Drill Pipe	63.00			3358.00	
Change Over Sub	1.00			3359.00	
Perforations	8.00			3367.00	
Bullnose	3.00			3370.00	78.00 Bottom Packers & Anchor

Total Tool Length: 99.00



Gas Rates	Pressure (psi)	Flow Rate (gpm)

Volume (bbl)	Description	Time (min)
0.14	OSM 100MM	10.00



**TRILOBITE
TESTING, INC.**

DRILL STEM TEST REPORT

FLUID SUMMARY

CG Oil Inc
PO Box 207
Victoria KS 6761+0207
ATTN: Roger Fisher

22-13S-16W Ellis,KS
Wil #1
Job Ticket: 65979 **DST#: 3**
Test Start: 2019.08.06 @ 02:13:00

Mud and Cushion Information

Mud Type: Gel Chem	Cushion Type:	Oil API:	deg API
Mud Weight: 9.00 lb/gal	Cushion Length:	Water Salinity:	ppm
Viscosity: 56.00 sec/qt	Cushion Volume:		
Water Loss: 12.39 in ³	Gas Cushion Type:		
Resistivity: ohm.m	Gas Cushion Pressure:		
Salinity: 14000.00 ppm			
Filter Cake: inches			

Recovery Information

Recovery Table

Length ft	Description	Volume bbl
10.00	OSM 100%M	0.142

Total Length: 10.00 ft Total Volume: 0.142 bbl
 Num Fluid Samples: 0 Num Gas Bombs: 0 Serial #:
 Laboratory Name: Laboratory Location:
 Recovery Comments: 2#LCM

Serial #: 8372

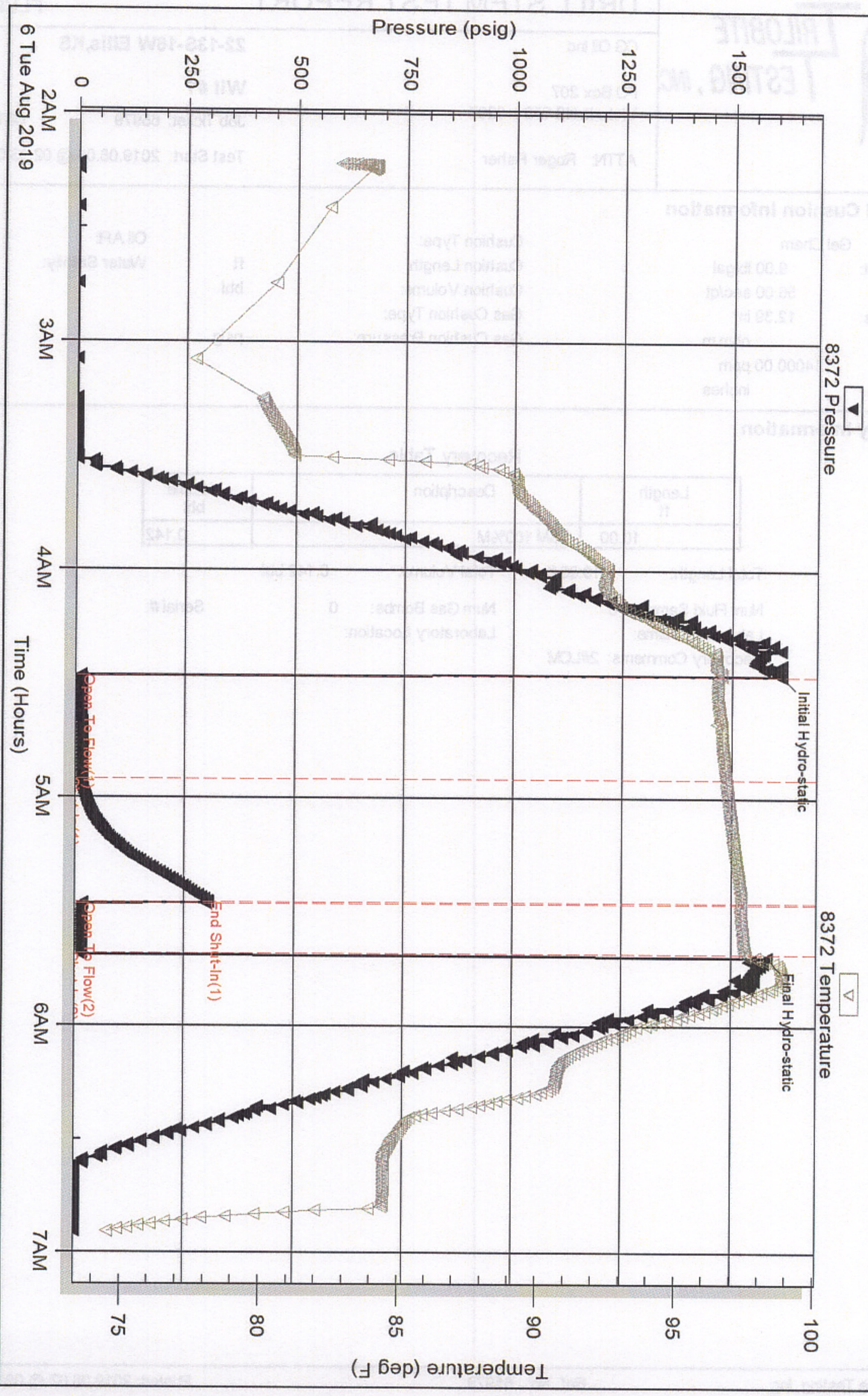
Inside

CG Oil Inc

Well #1

DST Test Number: 3

Pressure vs. Time



Tribolite Testing, Inc

Ref. No: 65979

Printed: 2019.08.07 @ 09:51:29

Serial #: 8374

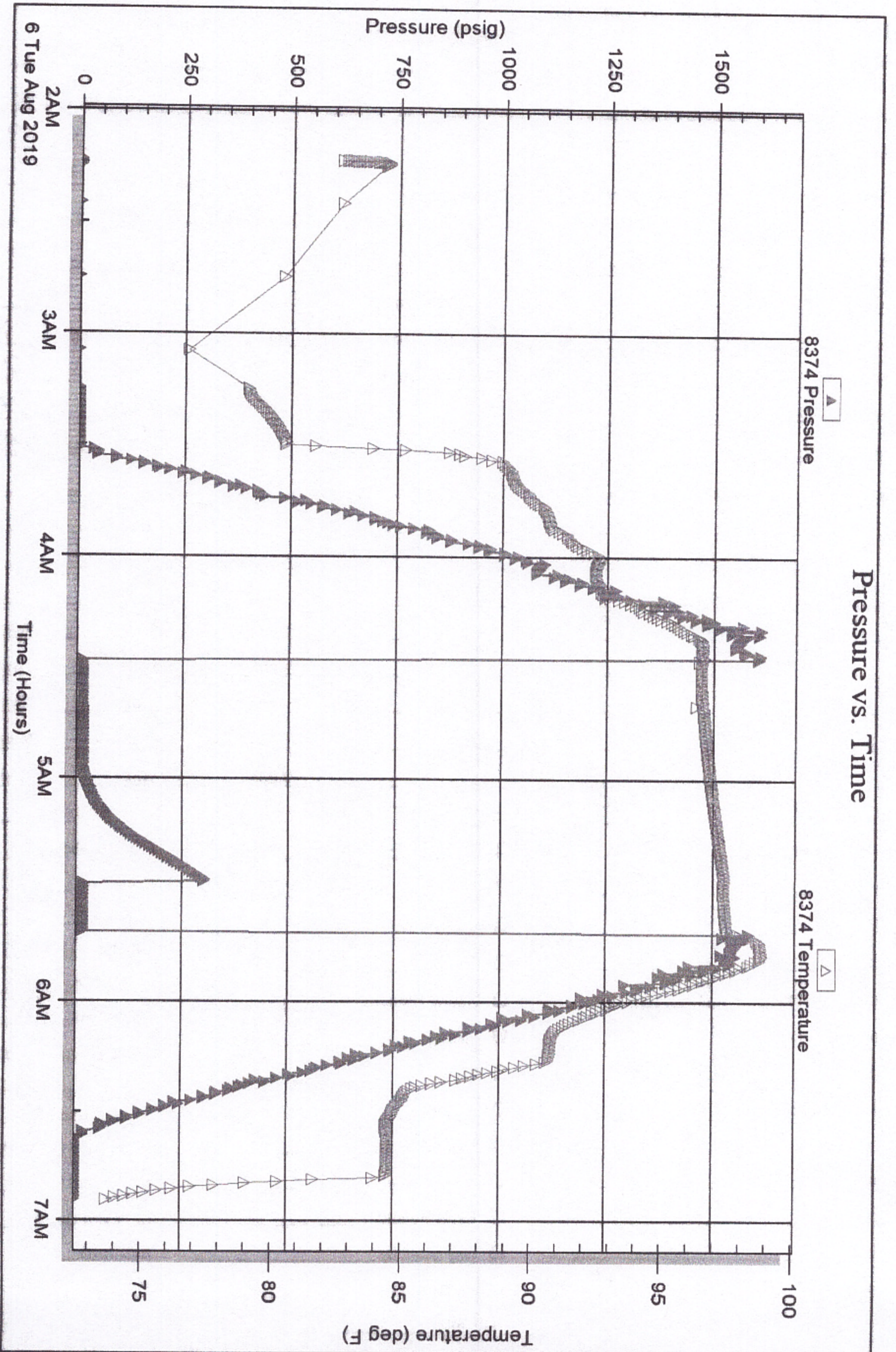
Inside

CG Oil Inc

Well #1

DST Test Number: 3

Pressure vs. Time





TRIBOLITE TESTING INC.

1515 Commerce Parkway • Hays, Kansas 67601

Test Ticket , 65977

NO.

Well Name & No. Wil #1 Test No. 1 Date 08/04/2019
 Company C J Oil Inc Elevation 1947 KB 1939 GL
 Address 2550 Airbase Rd PO BOX 207 Victoria Ks 67671 +0207
 Co. Rep / Geo. Roger Fisher Rig Duke #2
 Location: Sec. _____ Twp 13s Rge. 16w Co. Ellis State Ks

Interval Tested 3164' - 3210' Zone Tested Lans 'A-C'
 Anchor Length 46' Drill Pipe Run 3158' Mud Wt. 8.8
 Top Packer Depth 3159' Drill Collars Run - Vls 60
 Bottom Packer Depth 3164' Wt. Pipe Run - WL 12.4
 Total Depth 3210' Chlorides 14,200 ppm System LCM ~~11500~~ 2H

Blow Description 77-Weak, Built to 2 1/2"
75A No Return
77-Weak Built to 3 1/2"
75B No Return

Rec	Feet of	%gas	%oil	%water	%mud
<u>30</u>	<u>GUSOCM</u>	<u>7</u>	<u>3</u>	<u>90</u>	
	<u>30' GTP</u>				

Rec Total 30' BHT 99° Gravity _____ API RW _____ @ _____ ° F Chlorides _____ ppm

(A) Initial Hydrostatic 1550 Test 1200 T-On Location 18:17
 (B) First Initial Flow 12 Jars _____ T-Started 18:53
 (C) First Final Flow 19 Safety Joint _____ T-Open 23:03
 (D) Initial Shut-In 126 Circ Sub _____ T-Pulled 01:18 08/05/2019
 (E) Second Initial Flow 18 Hourly Standby _____ T-Out 02:35
 (F) Second Final Flow 23 Mileage 3027 30 Comments hole was bad,
 (G) Final Shut-In 243 Sampler _____ extra short trip
 (H) Final Hydrostatic 1514 Straddle _____

Initial Open 30 Shale Packer _____ EM Tool _____
 Initial Shut-In 30 Extra Packer _____ Ruined Shale Packer _____
 Final Flow 30 Extra Recorder _____ Ruined Packer _____
 Final Shut-In 45 Day Standby _____ Sub Total 0
 Accessibility _____ Total 1230
 Sub Total 1230 MP/DST Disc't _____

Approved By _____ Our Representative Spencer J. Stahl Thanks!

Tribolite Testing Inc. shall not be liable for damaged of any kind of the property or personnel of the one for whom a test is made, or for any loss suffered or sustained, directly or indirectly, through the use of its equipment, or its statements or opinion concerning the results of any test, tools lost or damaged in the hole shall be paid for at cost by the party for whom the test is made.
 785-259-0056



TRIOBITE TESTING INC.

1515 Commerce Parkway • Hays, Kansas 67601

Test Ticket 65978

NO.

Well Name & No. Wil #1 Test No. 2 Date 08/05/2019
 Company C J Oil Inc Elevation 1947 KB 1939 GL
 Address 2550 Airbase Rd PO BOX 207 Victoria KS 67671-0207
 Co. Rep / Geo. Roger Fisher Rig Duke #2
 Location: Sec. 22 Twp 134 Rge. 16W Co. Ellis State Ks

Interval Tested 3216 - 3265' Zone Tested Lens 20-7'
 Anchor Length 49' Drill Pipe Run 3221' Mud Wt. 8.8
 Top Packer Depth 3211' Drill Collars Run - Vis 56
 Bottom Packer Depth 3216' Wt. Pipe Run - WL 12.4
 Total Depth 3265' Chlorides 14000 ppm System LCM 2#

Blow Description 27- Weak; Built to 1"; Flush no help
2SD - No Return
77- No Blow; Pulled tool
7SD - - -

Rec	Feet of	%gas	%oil	%water	%mud
<u>25</u>	<u>OSM</u>			<u>100</u>	
Rec	Feet of	%gas	%oil	%water	%mud
Rec	Feet of	%gas	%oil	%water	%mud
Rec	Feet of	%gas	%oil	%water	%mud
Rec	Feet of	%gas	%oil	%water	%mud

Rec Total 25' BHT 9.5° Gravity - API RW - @ - ° F Chlorides - ppm

(A) Initial Hydrostatic 1583 Test 1200 T-On Location 09:47
 (B) First Initial Flow 12 Jars - T-Started 10:06
 (C) First Final Flow 20 Safety Joint - T-Open 12:12
 (D) Initial Shut-In 702 Circ Sub - T-Pulled 13:27
 (E) Second Initial Flow 22 Hourly Standby - T-Out 14:44
 (F) Second Final Flow 24 Mileage 3014 30 Comments -
 (G) Final Shut-In - Sampler -
 (H) Final Hydrostatic 1564 Straddle -
 Shale Packer -
 Extra Packer -
 Extra Recorder -
 Day Standby -
 Accessibility -

Initial Open 30
 Initial Shut-In 30
 Final Flow 15
 Final Shut-In -

Sub Total 1230 MP/DST Disc't -
 Sub Total 1230 Total 1230

Approved By _____ Our Representative Spencer J. Paul Thanks!
 Triobite Testing Inc. shall not be liable for damaged of any kind of the property or personnel of the one for whom a test is made, or for any loss suffered or sustained, directly or indirectly, through the use of its equipment, or its statements or opinion concerning the results of any test, tools lost or damaged in the hole shall be paid for at cost by the party for whom the test is made.
 785-259-0056



TRIBOLITE TESTING INC.

1515 Commerce Parkway • Hays, Kansas 67601

Test Ticket 65979

NO.

Well Name & No. Wil #1 Test No. 3 Date 08/06/2019
 Company C J Oil Inc Elevation 1947 KB 1939 GL
 Address 8550 Airbase Rd PO Box 207 Victoria KS 67671+0207
 Co. Rep / Geo. Roger Fisher Rig Duke #2
 Location: Sec. 22 Twp 134 Rge. 16W Co. Ellis State Ks

Interval Tested 3292' - 3370' Zone Tested Lans 'H-J'
 Anchor Length 78' Drill Pipe Run 3284' Mud Wt. 8.8
 Top Packer Depth 3287' Drill Collars Run - Vis 56
 Bottom Packer Depth 3292' Wt. Pipe Run - WL 12.4
 Total Depth 3370' Chlorides 14000 ppm System LCM 2#

Blow Description 77- Weak; Built to 1/2"; Flushed no help
78- No Return
79- No Blow; Pulled tool
78- - -

Rec	Feet of	%gas	%oil	%water	%mud
<u>10'</u>	<u>OSM</u>			<u>100</u>	

Rec Total 10' BHT 97° Gravity - API RW - @ - ° F Chlorides - ppm

(A) Initial Hydrostatic 1614 Test 1200 T-On Location 01:57
 (B) First Initial Flow 13 Jars - T-Started 02:13
 (C) First Final Flow 16 Safety Joint - T-Open 04:25
 (D) Initial Shut-In 305 Circ Sub - T-Pulled 05:40
 (E) Second Initial Flow 17 Hourly Standby - T-Out 06:53
 (F) Second Final Flow 17 Mileage 30722 60 Comments Loaded @ 16:00
 (G) Final Shut-In - Sampler - 08/06/2019
 (H) Final Hydrostatic 1582 Straddle -

EM Tool -
 Shale Packer - Ruined Shale Packer -
 Extra Packer - Ruined Packer -
 Extra Recorder - Extra Copies -
 Day Standby - Sub Total 0
 Accessibility - Total 1260
 Sub Total 1260 MP/DST Disc't -

Approved By _____ Our Representative Spencer J. Neal
 Tribolite Testing Inc. shall not be liable for damaged of any kind of the property or personnel of the one for whom a test is made, or for any loss suffered or sustained, directly or indirectly, through the use of its equipment, or its statements or opinion concerning the results of any test, tools lost or damaged in the hole shall be paid for at cost by the party for whom the test is made.
 785-259-0036