

KANSAS CORPORATION COMMISSION
OIL & GAS CONSERVATION DIVISION

TEMPORARY ABANDONMENT WELL APPLICATION

OPERATOR: License#
Name:
Address 1:
Address 2:
City: State: Zip:
Contact Person:
Phone:
Contact Person Email:
Field Contact Person:
Field Contact Person Phone:

API No. 15-
Spot Description:
Sec. Twp. S. R.
GPS Location: Lat: Long:
Datum:
County: Elevation:
Lease Name: Well #:
Well Type:
SWD Permit #: ENHR Permit #:
Gas Storage Permit #:
Spud Date: Date Shut-In:

Table with 7 columns: Conductor, Surface, Production, Intermediate, Liner, Tubing. Rows include Size, Setting Depth, Amount of Cement, Top of Cement, Bottom of Cement.

Casing Fluid Level from Surface: How Determined? Date:
Casing Squeeze(s): to w / sacks of cement, to w / sacks of cement. Date:
Do you have a valid Oil & Gas Lease? Yes No
Depth and Type: Junk in Hole at Tools in Hole at Casing Leaks: Yes No Depth of casing leak(s):
Type Completion: ALT. I ALT. II Depth of: DV Tool: w / sacks of cement Port Collar: w / sack of cement
Packer Type: Size: Inch Set at: Feet
Total Depth: Plug Back Depth: Plug Back Method:

Geological Data:

Table with 4 columns: Formation Name, Formation Top, Formation Base, Completion Information. Rows 1 and 2.

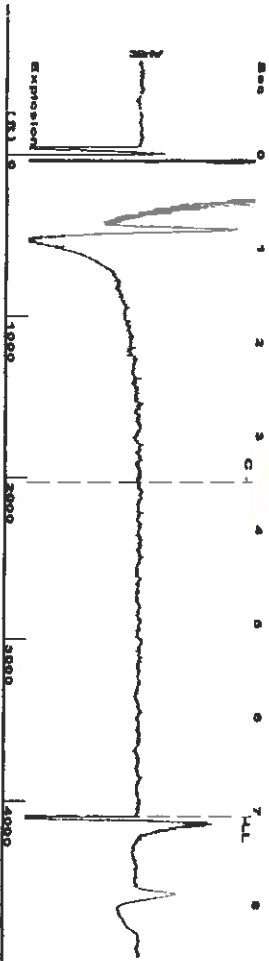
UNDER PENALTY OF PERJURY I HEREBY ATTEST THAT THE INFORMATION CONTAINED HEREIN IS TRUE AND CORRECT TO THE BEST OF MY KNOWLEDGE

Submitted Electronically

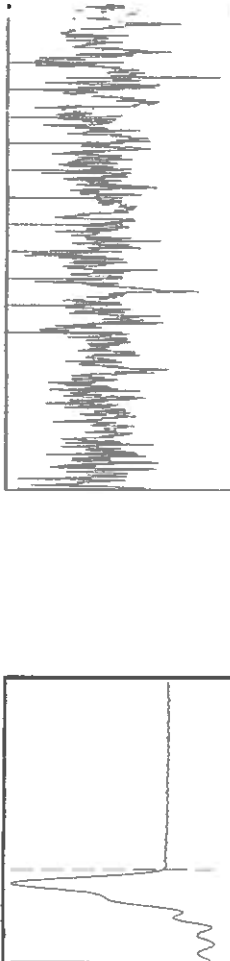
Do NOT Write in This Space - KCC USE ONLY
Date Tested: Results: Date Plugged: Date Repaired: Date Put Back in Service:
Review Completed by: Comments:
TA Approved: Yes Denied Date:

Mail to the Appropriate KCC Conservation Office:

Table with 2 columns: Office Address, Phone. Rows for District Office #1, #2, #3, #4.



Filter Type High Pass Automatic Collar Count Yes  
 Manual Acoustic Velocity 14234 ft/s Manual JTS/sec 18.018  
 Time 7.057 sec  
 Joints 129.158 Jts  
 Depth 4094.32 ft

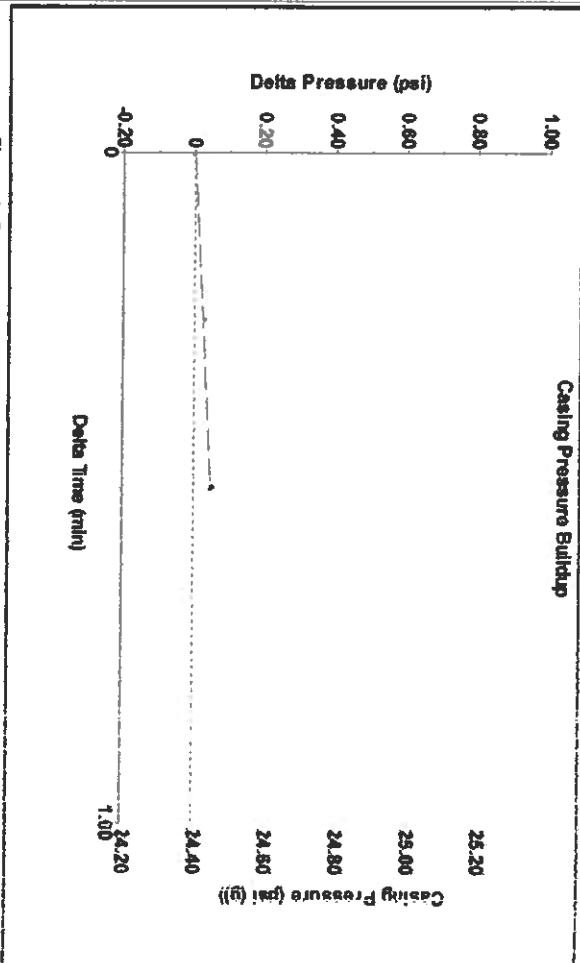


Analysis Method: Automatic

Group: Merit Energy Company-Ulysses Well: WB Sheering 29-3 (acquired on: 10/30/19 09:20:21)

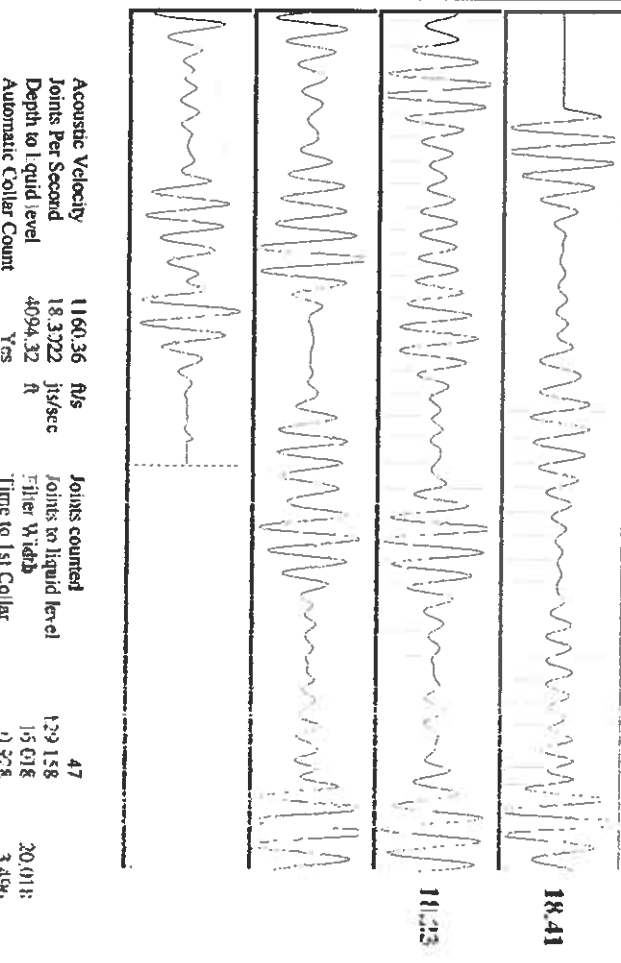
Production	Potential	Casting Pressure	Producing
Oil -*-	-*- BBL/D	24.4 psi (g)	Annular
Water -*-	-*- BBL/D	Casing Pressure Buildup	Gas Flow
Gas -*-	-*- Mscf/D	0.049 psi	% Liquid
IPR Method	Vogel	0.50 min	3 Mscf/D
PBHP/SBHP	-*-	Gas/Liquid Interface Pressure	% Liquid
Production Efficiency	0.0	29.1 psi (g)	84 %
Oil 40 deg/API		Liquid Level Depth	
Water 1.05 Sp-Gr-H2O		4094.32 ft	
Gas 0.83 Sp-Gr-AIR		Pump Intake Depth	
Acoustic Velocity	1160.36 ft/s	5350.00 ft	
		Formation Depth	
		5678.00 ft	

Formation Submergence  
 Total Gas/Liquid Column HT (TVD) 1256 ft  
 Equivalent Gas-Free Liquid HT (TVD) 1060 ft  
 Acoustic Test



Change in Pressure 0.05 psi  
 Change in Time 0.50 min  
 PT9522 Range  
 0 - 2 psi

Group: Merit Energy Company-Ulysses Well: WB Sheering 29-3 (acquired on: 10/30/19 09:20:21)



Acoustic Velocity 1160.36 ft/s  
 Joints Per Second 18.3322 Jts/sec  
 Depth to Liquid level 4094.32 ft  
 Automatic Collar Count Yes

November 05, 2019

Katherine McClurkan  
Merit Energy Company, LLC  
13727 Noel Road, Suite 1200  
Dallas, TX 75240

Re: Temporary Abandonment  
API 15-067-21808-00-01  
W.B. Scherling 29-3  
NW/4 Sec.29-29S-38W  
Grant County, Kansas

Dear Katherine McClurkan:

"Your temporary abandonment (TA) application for the well listed above has been approved. In accordance with K.A.R. 82-3-111 the TA status of this well will expire 11/05/2020.

- \* If you return this well to service or plug it, please notify the District Office.
- \* If you sell this well you are required to file a Transfer of Operator form, T-1.
- \* If the well will remain temporarily abandoned, you must submit a new TA application, CP-111, before 11/05/2020.

You may contact me at the number above if you have questions.

Very truly yours,

Michael Maier"