

KANSAS CORPORATION COMMISSION
OIL & GAS CONSERVATION DIVISION

TEMPORARY ABANDONMENT WELL APPLICATION

OPERATOR: License#
Name:
Address 1:
Address 2:
City: State: Zip:
Contact Person:
Phone:
Contact Person Email:
Field Contact Person:
Field Contact Person Phone:

API No. 15-
Spot Description:
Sec. Twp. S. R.
GPS Location: Lat: Long:
Datum: NAD27 NAD83 WGS84
County: Elevation:
Lease Name: Well #:
Well Type: Oil Gas OG WSW Other:
SWD Permit #: ENHR Permit #:
Gas Storage Permit #:
Spud Date: Date Shut-In:

Table with 7 columns: Conductor, Surface, Production, Intermediate, Liner, Tubing. Rows include Size, Setting Depth, Amount of Cement, Top of Cement, Bottom of Cement.

Casing Fluid Level from Surface: How Determined? Date:
Casing Squeeze(s): to w / sacks of cement, to w / sacks of cement. Date:
Do you have a valid Oil & Gas Lease? Yes No
Depth and Type: Junk in Hole at Tools in Hole at Casing Leaks: Yes No Depth of casing leak(s):
Type Completion: ALT. I ALT. II Depth of: DV Tool: w / sacks of cement Port Collar: w / sack of cement
Packer Type: Size: Inch Set at: Feet
Total Depth: Plug Back Depth: Plug Back Method:

Geological Data:

Table with 4 columns: Formation Name, Formation Top, Formation Base, Completion Information. Rows 1 and 2.

UNDER PENALTY OF PERJURY I HEREBY ATTEST THAT THE INFORMATION CONTAINED HEREIN IS TRUE AND CORRECT TO THE BEST OF MY KNOWLEDGE

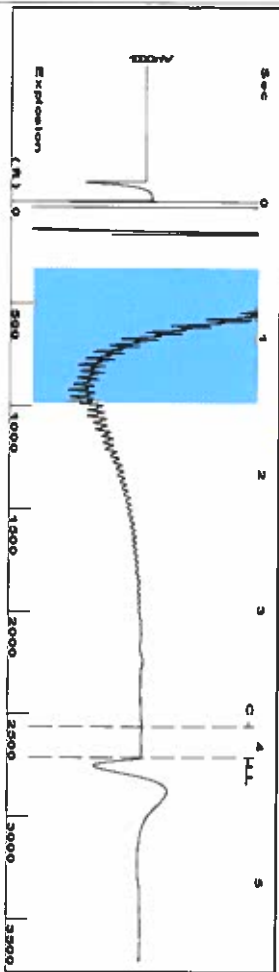
Submitted Electronically

Form with fields: Do NOT Write in This Space - KCC USE ONLY, Date Tested, Results, Date Plugged, Date Repaired, Date Put Back in Service, Review Completed by, Comments, TA Approved: Yes Denied, Date.

Mail to the Appropriate KCC Conservation Office:

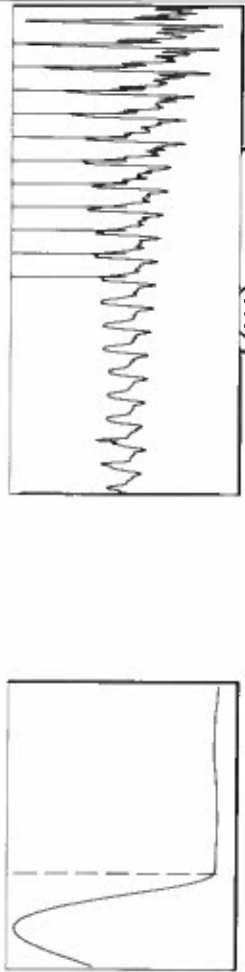
Table with 2 columns: Office Address, Phone. Rows for KCC District Office #1, #2, #3, #4.

Group: TAD Well: frez a-2 (acquired on: 10/30/19 09:26:31)



Filter Type: High Pass
Manual Acoustic Veloc: 1323.59 f/s
Automatic Collar Count: Yes
Manual JTS/sec: 20.8768
Time: 4.092 sec
Joints: 85.6306 Jts
Depth: 2714.49 ft

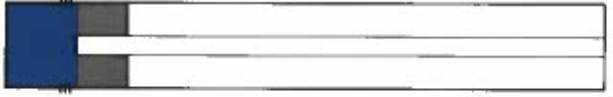
0.5 to 1.5 (Sec)



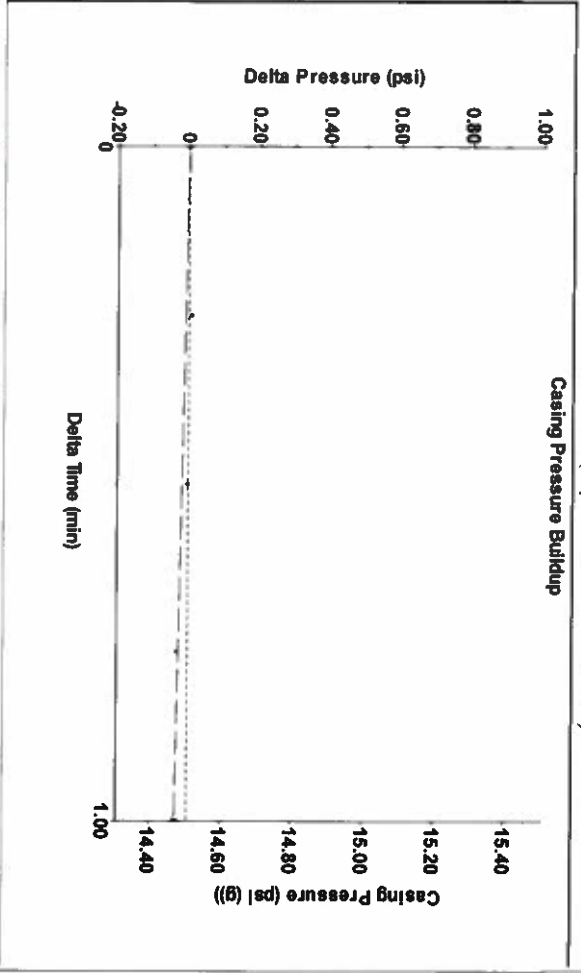
Analysis Method: Automatic

Group: TAD Well: frez a-2 (acquired on: 10/30/19 09:26:31)

Production	Potential	Casing Pressure	Producing
Oil -*-	BBL/D	14.5 psi (g)	Liquid
Water -*-	BBL/D	-0.034 psi	Annular Gas Flow
Gas -*-	MscFD	1.00 min	% Liquid
IPR Method: PBHP/SBHP	Vogel	Gas/Liquid Interface Pressure: 16.4 psi (g)	100 %
Production Efficiency: 0.0		Liquid Level Depth: 2714.49 ft	Liquid Stream Below Tubing: Oil 0 %, Water 100 %
Oil 40 deg API		Pump Intake Depth: 3047.00 ft	Liquid Below Tubing: 100 %
Water 1.05 Sp.Gr H2O		Formation Depth: 3120.00 ft	Pump Intake: 128.6 psi (g)
Gas 0.68 Sp.Gr AIR			Producing BHP: 161.8 psi (g)
Acoustic Velocity: 1326.73 f/s			Static BHP: -*-, psi (g)

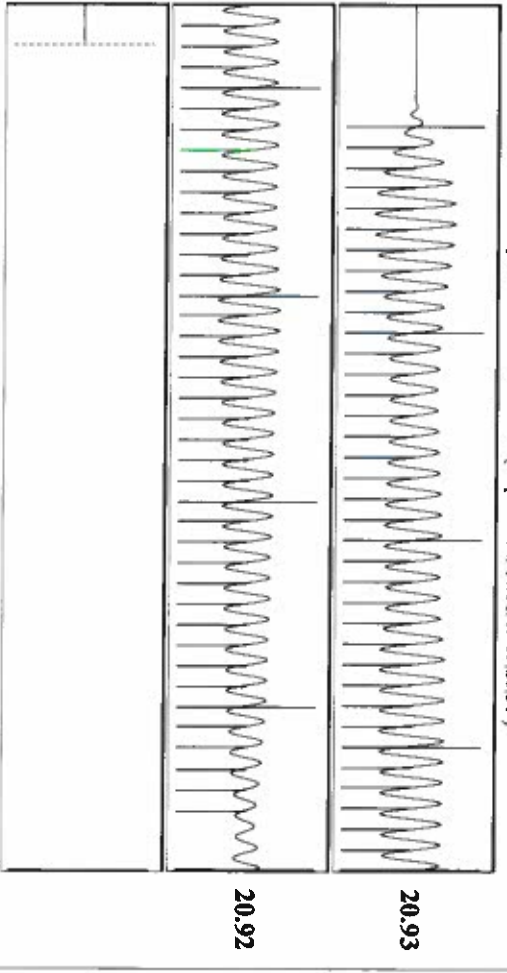


Group: TAD Well: frez a-2 (acquired on: 10/30/19 09:26:31)



Change in Pressure: -0.03 psi
Change in Time: 1.00 min
PT8197 Range: 0 - ? psi

Group: TAD Well: frez a-2 (acquired on: 10/30/19 09:26:31)



Acoustic Velocity: 1326.73 f/s
Joints Per Second: 20.9263 jts/sec
Depth to liquid level: 2714.49 ft
Automatic Collar Count: Yes

Joints counted: 75
Joints to liquid level: 85.6306
Filter Width: 18.8768
Time to 1st Collar: 22.8768
3.864

November 05, 2019

Katherine McClurkan
Merit Energy Company, LLC
13727 Noel Road, Suite 1200
Dallas, TX 75240

Re: Temporary Abandonment
API 15-067-20369-00-00
Fretz A 2
NE/4 Sec.31-27S-35W
Grant County, Kansas

Dear Katherine McClurkan:

"Your temporary abandonment (TA) application for the well listed above has been approved. In accordance with K.A.R. 82-3-111 the TA status of this well will expire 11/05/2020.

- * If you return this well to service or plug it, please notify the District Office.
- * If you sell this well you are required to file a Transfer of Operator form, T-1.
- * If the well will remain temporarily abandoned, you must submit a new TA application, CP-111, before 11/05/2020.

You may contact me at the number above if you have questions.

Very truly yours,

Michael Maier"