

KANSAS CORPORATION COMMISSION
OIL & GAS CONSERVATION DIVISION

TEMPORARY ABANDONMENT WELL APPLICATION

OPERATOR: License# _____
Name: _____
Address 1: _____
Address 2: _____
City: _____ State: _____ Zip: _____ + _____
Contact Person: _____
Phone:(_____) _____
Contact Person Email: _____
Field Contact Person: _____
Field Contact Person Phone: (_____) _____

API No. 15- _____
Spot Description: _____
Sec. _____ Twp. _____ S. R. _____ E _____ W _____
feet from _____ N / _____ S Line of Section
feet from _____ E / _____ W Line of Section
GPS Location: Lat: _____, Long: _____
Datum: _____ NAD27 _____ NAD83 _____ WGS84
County: _____ Elevation: _____ GL _____ KB
Lease Name: _____ Well #: _____
Well Type: (check one) _____ Oil _____ Gas _____ OG _____ WSW _____ Other: _____
_____ SWD Permit #: _____ ENHR Permit #: _____
_____ Gas Storage Permit #: _____
Spud Date: _____ Date Shut-In: _____

Table with 7 columns: Conductor, Surface, Production, Intermediate, Liner, Tubing. Rows include Size, Setting Depth, Amount of Cement, Top of Cement, Bottom of Cement.

Casing Fluid Level from Surface: _____ How Determined? _____ Date: _____
Casing Squeeze(s): _____ to _____ w / _____ sacks of cement, _____ to _____ w / _____ sacks of cement. Date: _____
Do you have a valid Oil & Gas Lease? _____ Yes _____ No
Depth and Type: _____ Junk in Hole at _____ Tools in Hole at _____ Casing Leaks: _____ Yes _____ No Depth of casing leak(s): _____
Type Completion: _____ ALT. I _____ ALT. II Depth of: _____ DV Tool: _____ w / _____ sacks of cement _____ Port Collar: _____ w / _____ sack of cement
Packer Type: _____ Size: _____ Inch Set at: _____ Feet
Total Depth: _____ Plug Back Depth: _____ Plug Back Method: _____

Geological Date:

Table with 4 columns: Formation Name, Formation Top, Formation Base, Completion Information. Rows 1 and 2.

UNDER PENALTY OF PERJURY I HEREBY ATTEST THAT THE INFORMATION CONTAINED HEREIN IS TRUE AND CORRECT TO THE BEST OF MY KNOWLEDGE

Submitted Electronically

Do NOT Write in This Space - KCC USE ONLY
Date Tested: _____ Results: _____ Date Plugged: _____ Date Repaired: _____ Date Put Back in Service: _____
Review Completed by: _____ Comments: _____
TA Approved: _____ Yes _____ Denied Date: _____

Mail to the Appropriate KCC Conservation Office:

Table with 2 columns: Office Address, Phone. Rows for KCC District Office #1, #2, #3, #4.

General

Well ID 126996
 Well Hughes 3408 1-22H
 Company SandRidge Energy
 Operator SandRidge Energy
 Lease Name Hughes 3408 1-22H
 Elevation 1296.00 ft
 Production Method Other
 Dataset Description

Comment

Surface Unit

Manufacturer - * -
 Unit Class Conventional
 Unit API Number - * -
 Measured Stroke Length 100.000 in
 Rotation CW
 Counter Balance Effect (Weights Level) - * - Klb
 Weight Of Counter Weights 2000 lb

Prime Mover

Motor Type Electric
 Rated HP - * - HP
 Run Time 24 hr/day
 MFG/Comment - * -

Electric Motor Parameters

Rated Full Load AMPS - * -
 Rated Full Load RPM - * -
 Synchronous RPM 1200
 Voltage - * -
 Hertz 60
 Phase 3
 Power Consumption 5
 Power Demand 8 \$/KW

Tubulars

Tubing OD 2.875 in
 Casing OD 7.000 in
 Average Joint Length 31.700 ft
 Anchor Depth - * - ft
 Kelly Bushing 23.00 ft

Pump

Plunger Diameter - * - in
 Pump Intake Depth 5017.00 ft
 **Total Rod Length < Pump Depth

Polished Rod

Polished Rod Diameter - * - in

Rod String

	Top Taper	Taper 2	Taper 3	Taper 4	Taper 5	Taper 6	
Rod Type	- * -	- * -	- * -	- * -	- * -	- * -	- * -
Rod Length	- * -	- * -	- * -	- * -	- * -	- * -	ft
Rod Diameter	- * -	- * -	- * -	- * -	- * -	- * -	in
Rod Weight	0.0	0.0	0.0	0.0	0.0	0.0	lb

Total Rod Length 0
 Total Rod Weight 0.00

Damp Up 0.05
 Damp Down 0.05

Conditions

Pressure

Static BHP 568.1 psi (g)
 Static BHP Method Acoustic
 Static BHP Date 11/06/2019

Producing BHP - * - psi (g)
 Producing BHP Method - * -
 Producing BHP Date - * -
 Formation Depth 5518.00 ft

Surface Producing Pressures

Tubing Pressure - * - psi (g)
 Casing Pressure 44.0 psi (g)

Casing Pressure Buildup

Change in Pressure -0.117 psi
 Over Change in Time 1.00 min

Production

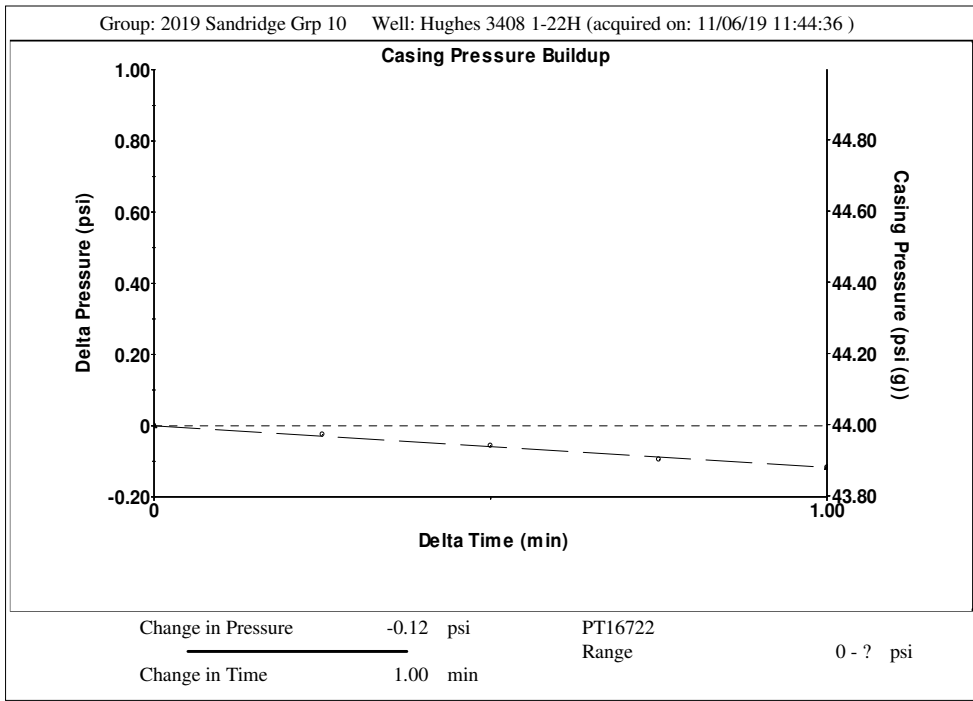
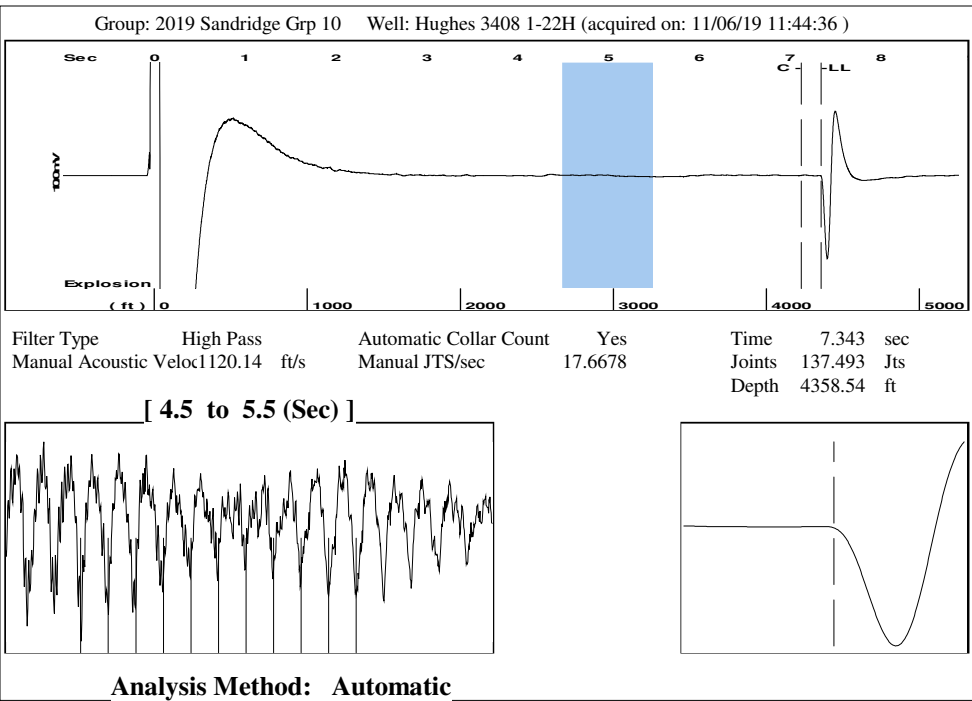
Oil Production 0 BBL/D
 Water Production 1 BBL/D
 Gas Production - * - Mscf/D
 Production Date 11/06/2019

Temperatures

Surface Temperature 70 deg F
 Bottomhole Temperature 150 deg F

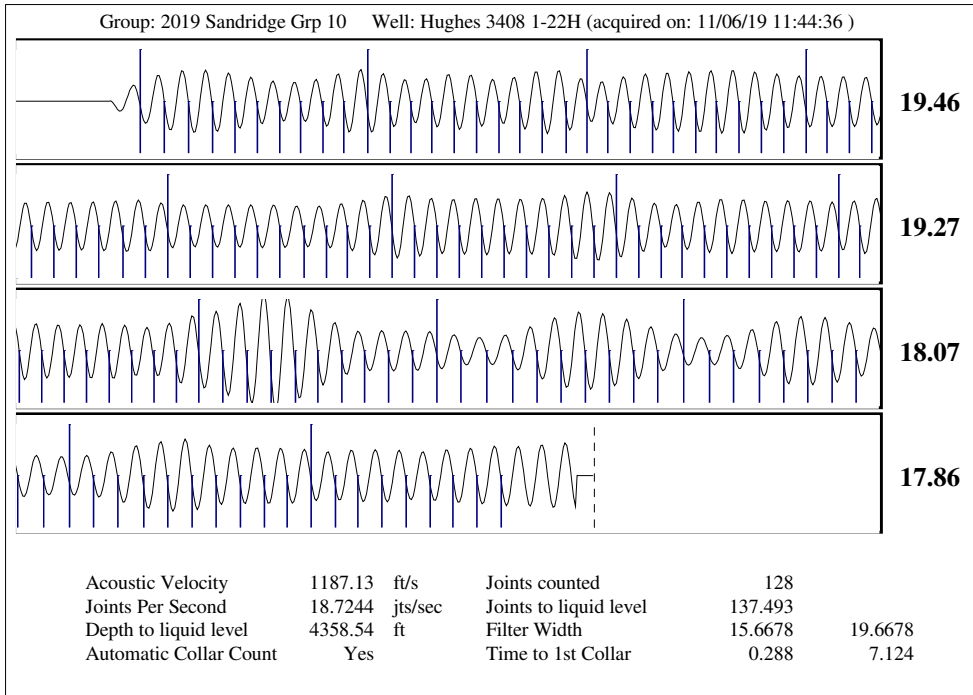
Fluid Properties

Oil API 40 deg.API
 Water Specific Gravity 1.05 Sp.Gr.H2O



Group: 2019 Sandridge Grp 10 Well: Hughes 3408 1-22H (acquired on: 11/06/19 11:44:36)

Production		Potential	Casing Pressure	Static
Current	0	- * - BBL/D	44.0 psi (g)	Oil Column Height
Water	1	- * - BBL/D	Casing Pressure Buildup	MD 0 ft
Gas	- * -	- * - Mscf/D	-0.117 psi	Water Column Height
			1.00 min	MD 1136 ft
IPR Method	Vogel		Gas/Liquid Interface Pressure	
PBHP/SBHP	- * -		51.4 psi (g)	
Production Efficiency	0.0		Liquid Level Depth	
			4358.54 ft	
Oil	40 deg.API		Tubing Intake Depth	
Water	1.05 Sp.Gr.H2O		5017.00 ft	
Gas	0.80 Sp.Gr.AIR		Formation Depth	
			5518.00 ft	
Acoustic Velocity	1187.13 ft/s		Static BHP	
			568.1 psi (g)	



November 12, 2019

Laci Bevans
SandRidge Exploration and Production LLC
123 ROBERT S. KERR AVE
OKLAHOMA CITY, OK 73102-6406

Re: Temporary Abandonment
API 15-077-22073-01-00
HUGHES 3408 1-22H
SW/4 Sec.22-34S-08W
Harper County, Kansas

Dear Laci Bevans:

"Your temporary abandonment (TA) application for the well listed above has been approved. In accordance with K.A.R. 82-3-111 the TA status of this well will expire 11/12/2020.

- * If you return this well to service or plug it, please notify the District Office.
- * If you sell this well you are required to file a Transfer of Operator form, T-1.
- * If the well will remain temporarily abandoned, you must submit a new TA application, CP-111, before 11/12/2020.

You may contact me at the number above if you have questions.

Very truly yours,

Steve Van Gieson"