

KANSAS CORPORATION COMMISSION
OIL & GAS CONSERVATION DIVISION

TEMPORARY ABANDONMENT WELL APPLICATION

OPERATOR: License#
Name:
Address 1:
Address 2:
City: State: Zip:
Contact Person:
Phone:
Contact Person Email:
Field Contact Person:
Field Contact Person Phone:

API No. 15-
Spot Description:
Sec. Twp. S. R.
feet from N / S Line of Section
feet from E / W Line of Section
GPS Location: Lat: , Long:
Datum: NAD27 NAD83 WGS84
County: Elevation: GL KB
Lease Name: Well #:
Well Type: Oil Gas OG WSW Other:
SWD Permit #: ENHR Permit #:
Gas Storage Permit #:
Spud Date: Date Shut-In:

Table with 7 columns: Conductor, Surface, Production, Intermediate, Liner, Tubing. Rows include Size, Setting Depth, Amount of Cement, Top of Cement, Bottom of Cement.

Casing Fluid Level from Surface: How Determined? Date:
Casing Squeeze(s): to w / sacks of cement, to w / sacks of cement. Date:
Do you have a valid Oil & Gas Lease? Yes No
Depth and Type: Junk in Hole at Tools in Hole at Casing Leaks: Yes No Depth of casing leak(s):
Type Completion: ALT. I ALT. II Depth of: DV Tool: w / sacks of cement Port Collar: w / sack of cement
Packer Type: Size: Inch Set at: Feet
Total Depth: Plug Back Depth: Plug Back Method:

Geological Date:

Table with 4 columns: Formation Name, Formation Top, Formation Base, Completion Information. Rows 1 and 2.

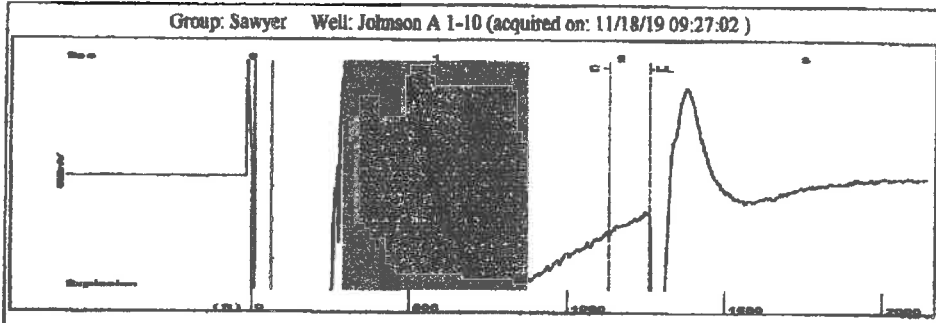
UNDER PENALTY OF PERJURY I HEREBY ATTEST THAT THE INFORMATION CONTAINED HEREIN IS TRUE AND CORRECT TO THE BEST OF MY KNOWLEDGE

Submitted Electronically

Do NOT Write in This Space - KCC USE ONLY
Date Tested: Results: Date Plugged: Date Repaired: Date Put Back in Service:
Review Completed by: Comments:
TA Approved: Yes Denied Date:

Mail to the Appropriate KCC Conservation Office:

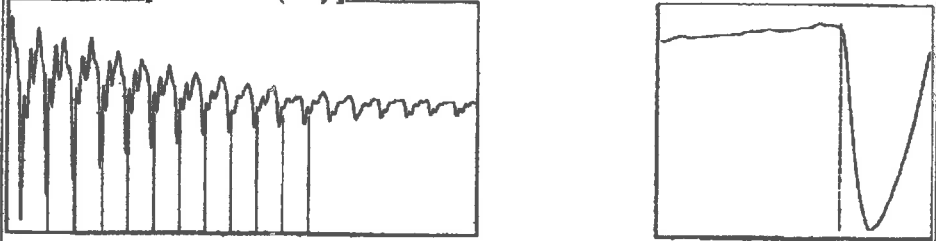
Table with 3 columns: District Office, Address, Phone. Rows for District Office #1, #2, #3, #4.



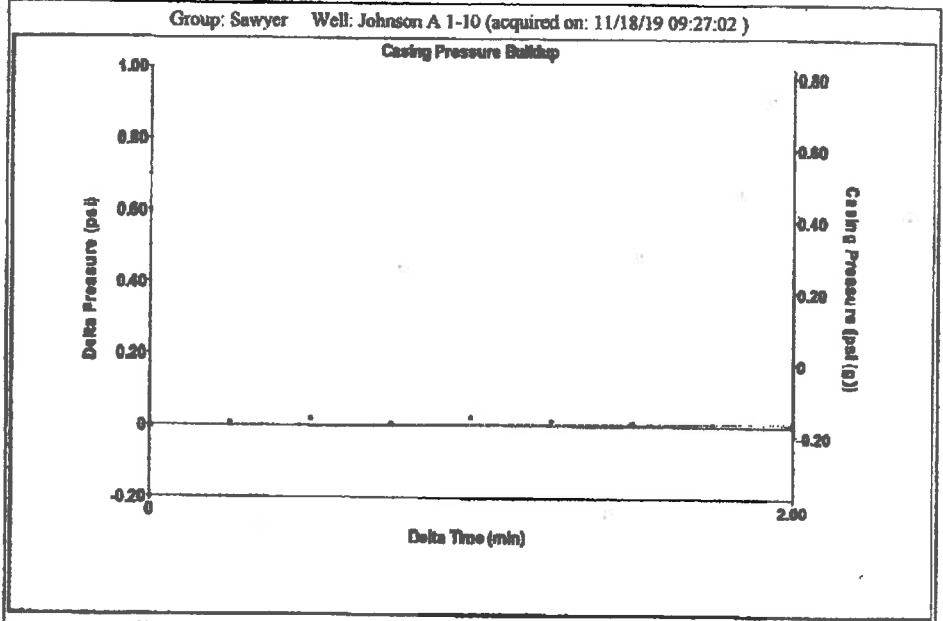
Group: Sawyer Well: Johnson A 1-10 (acquired on: 11/18/19 09:27:02)

Filter Type	High Pass	Automatic Collar Count	Yes	Time	2.158 sec
Manual Acoustic Velocity	1157.32 ft/s	Manual JTS/scc	18.0832	Joints	39.3796 Jts
				Depth	1260.15 ft

[0.5 to 1.5 (Sec)]



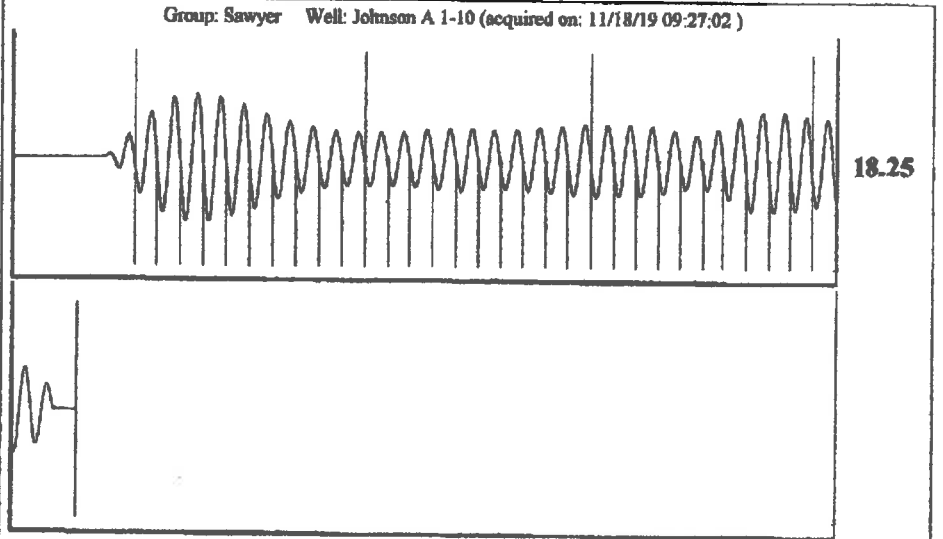
Analysis Method: Automatic



Change in Pressure	0.01 psi	PT13440
Change in Time	2.00 min	Range
		0 - 7 psi

Group: Sawyer Well: Johnson A 1-10 (acquired on: 11/18/19 09:27:02)

Production Current	Potential	Casing Pressure	Producing
Oil -*- BBL/D	-*- BBL/D	-0.2 psi (g)	
Water -*- BBL/D	-*- BBL/D	Casing Pressure Buildup	Annular Gas Flow
Gas -*- Mscf/D	-*- Mscf/D	0.0 psi	0 Mscf/D
		2.00 min	% Liquid
		Gas/Liquid Interface Pressure	100 %
		0.3 psi (g)	
IPR Method	Vogel	Liquid Level Depth	
FBHP/SBHP	-*-	1260.15 ft	
Production Efficiency	0.0	Pump Intake Depth	
		4481.00 ft	
Oil 40 deg API		Formation Depth	
Water 1.05 Sp.Gr.H2O		4510.00 ft	
Gas 0.81 Sp.Gr.AIR			
Acoustic Velocity	1167.88 ft/s		
Formation Submergence			
Total Gaseous Liquid Column HT (TVD)	3221 ft		
Equivalent Gas Free Liquid HT (TVD)	3221 ft		
Acoustic Test			



Acoustic Velocity	1167.88 ft/s	Joints counted	30
Joints Per Second	18.2482 jts/sec	Joints to liquid level	39.3796
Depth to liquid level	1260.15 ft	Filter Width	16.0832
Automatic Collar Count	Yes	Time to 1st Collar	0.296
			20.0832
			1.94

November 26, 2019

Margery L. Nagel
F. G. Holl Company L.L.C.
9431 E CENTRAL STE 100
WICHITA, KS 67206-2563

Re: Temporary Abandonment
API 15-007-22996-00-00
JOHNSON A 1-10
NW/4 Sec.10-30S-14W
Barber County, Kansas

Dear Margery L. Nagel:

"Your temporary abandonment (TA) application for the well listed above has been approved. In accordance with K.A.R. 82-3-111 the TA status of this well will expire 11/26/2020.

- * If you return this well to service or plug it, please notify the District Office.
- * If you sell this well you are required to file a Transfer of Operator form, T-1.
- * If the well will remain temporarily abandoned, you must submit a new TA application, CP-111, before 11/26/2020.

You may contact me at the number above if you have questions.

Very truly yours,

Michael Maier"