

KANSAS CORPORATION COMMISSION
OIL & GAS CONSERVATION DIVISION

TEMPORARY ABANDONMENT WELL APPLICATION

OPERATOR: License#
Name:
Address 1:
Address 2:
City: State: Zip:
Contact Person:
Phone:
Contact Person Email:
Field Contact Person:
Field Contact Person Phone:

API No. 15-
Spot Description:
Sec. Twp. S. R.
feet from N / S Line of Section
feet from E / W Line of Section
GPS Location: Lat: , Long:
Datum: NAD27 NAD83 WGS84
County: Elevation: GL KB
Lease Name: Well #:
Well Type: (check one) Oil Gas OG WSW Other:
SWD Permit #: ENHR Permit #:
Gas Storage Permit #:
Spud Date: Date Shut-In:

Table with 7 columns: Conductor, Surface, Production, Intermediate, Liner, Tubing. Rows include Size, Setting Depth, Amount of Cement, Top of Cement, Bottom of Cement.

Casing Fluid Level from Surface: How Determined? Date:
Casing Squeeze(s): to w / sacks of cement, to w / sacks of cement. Date:
Do you have a valid Oil & Gas Lease? Yes No
Depth and Type: Junk in Hole at Tools in Hole at Casing Leaks: Yes No Depth of casing leak(s):
Type Completion: ALT. I ALT. II Depth of: DV Tool: w / sacks of cement Port Collar: w / sack of cement
Packer Type: Size: Inch Set at: Feet
Total Depth: Plug Back Depth: Plug Back Method:

Geological Data:

Table with 4 columns: Formation Name, Formation Top, Formation Base, Completion Information. Rows 1 and 2.

UNDER PENALTY OF PERJURY I HEREBY ATTEST THAT THE INFORMATION CONTAINED HEREIN IS TRUE AND CORRECT TO THE BEST OF MY KNOWLEDGE

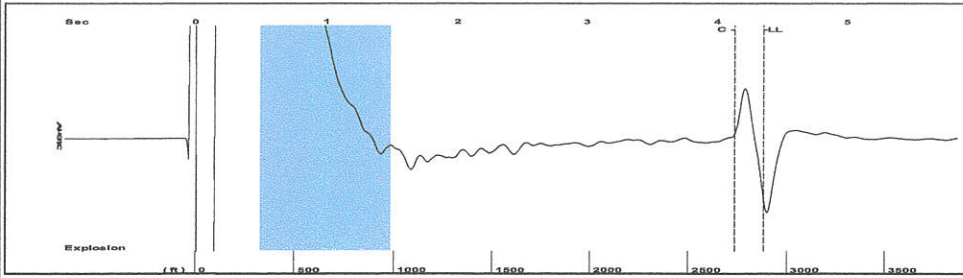
Submitted Electronically

Do NOT Write in This Space - KCC USE ONLY
Date Tested: Results: Date Plugged: Date Repaired: Date Put Back in Service:
Review Completed by: Comments:
TA Approved: Yes Denied Date:

Mail to the Appropriate KCC Conservation Office:

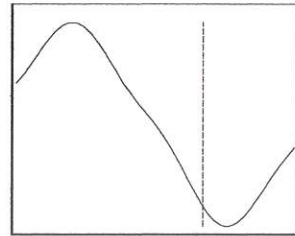
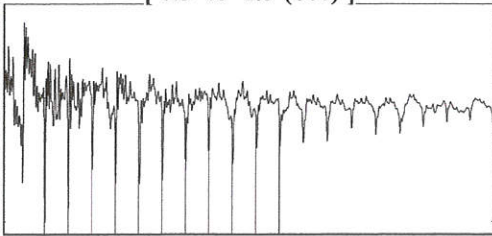
Table with 3 columns: District Office #, Address, Phone. Rows 1-4.

Group: TA'D WELLS Well: BRECHEISEN 2-32 (acquired on: 11/21/19 09:19:39)



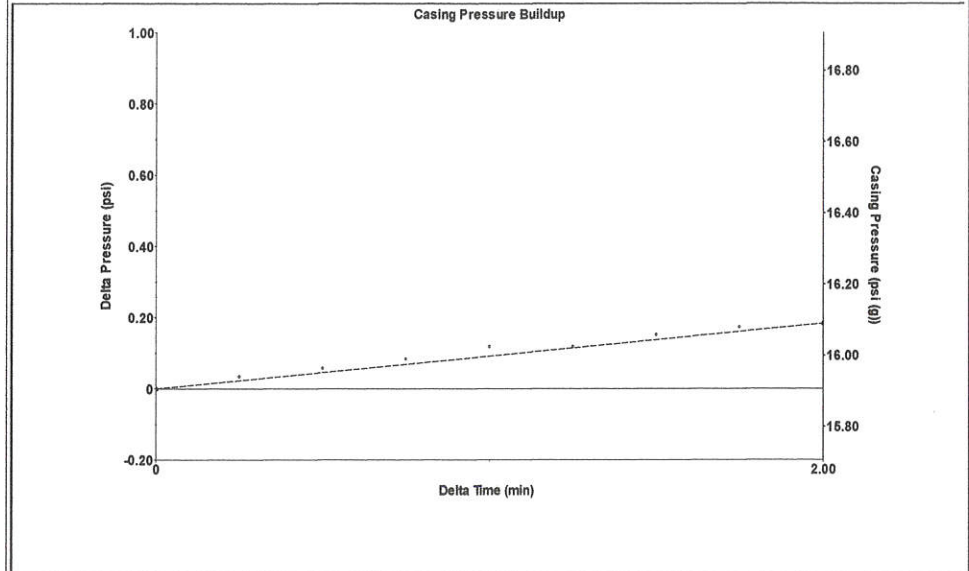
Filter Type High Pass Automatic Collar Count Yes Time 4.353 sec
 Manual Acoustic Vel 1315.35 ft/s Manual JTS/sec 20.7469 Joints 90.8745 Jts
 Depth 2880.72 ft

[0.5 to 1.5 (Sec)]



Analysis Method: Automatic

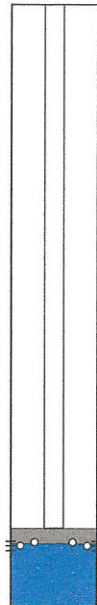
Group: TA'D WELLS Well: BRECHEISEN 2-32 (acquired on: 11/21/19 09:19:39)



Change in Pressure 0.18 psi PT10857
 Change in Time 2.00 min Range 0 - ? psi

Group: TA'D WELLS Well: BRECHEISEN 2-32 (acquired on: 11/21/19 09:19:39)

Production	Potential	Casing Pressure
Current		15.9 psi (g)
Oil - * -	- * - BBL/D	Casing Pressure Buildup
Water - * -	- * - BBL/D	0.183 psi
Gas - * -	- * - Mscf/D	2.00 min
IPR Method	Vogel	Gas/Liquid Interface Pressure
PBHP/SBHP	- * -	18.0 psi (g)
Production Efficiency	0.0	Liquid Level Depth
Oil 40 deg.API		2880.72 ft
Water 1.05 Sp.Gr.H2O		Pump Intake Depth
Gas 0.69 Sp.Gr.AIR		2786.00 ft
Acoustic Velocity	1323.56 ft/s	Formation Depth
		2890.00 ft



Producing

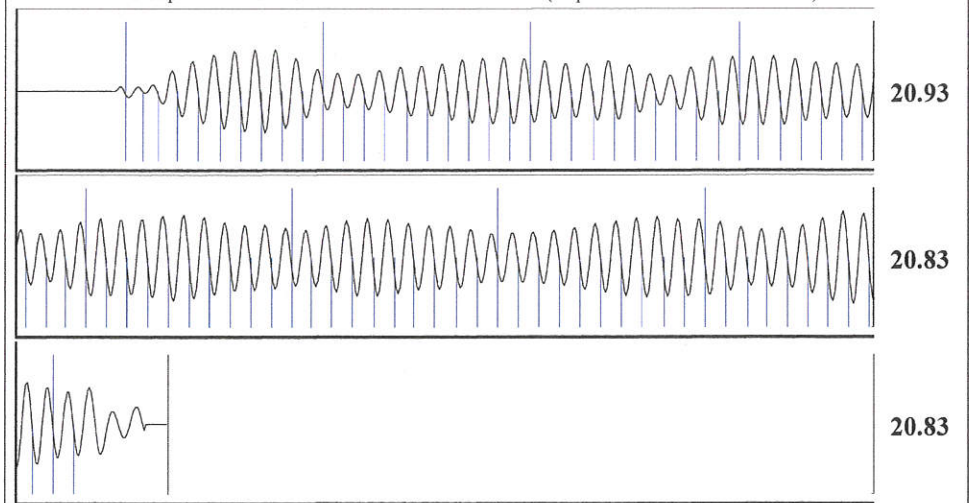
Annular Gas Flow 2 Mscf/D
 % Liquid 90 %

Pump Intake 17.9 psi (g)
 Producing BHP 21.8 psi (g)
 Static BHP - * - psi (g)

Formation Submergence
 Total Gaseous Liquid Column HT (TVD) - * - ft
 Equivalent Gas Free Liquid HT (TVD) - * - ft

Acoustic Test

Group: TA'D WELLS Well: BRECHEISEN 2-32 (acquired on: 11/21/19 09:19:39)



Acoustic Velocity	1323.56 ft/s	Joints counted	81
Joints Per Second	20.8763 jts/sec	Joints to liquid level	90.8745
Depth to liquid level	2880.72 ft	Filter Width	18.7469 22.7469
Automatic Collar Count	Yes	Time to 1st Collar	0.252 4.132

November 26, 2019

Katherine McClurkan
Merit Energy Company, LLC
13727 Noel Road, Suite 1200
Dallas, TX 75240

Re: Temporary Abandonment
API 15-189-21628-00-00
Breckeisen 2-32
SE/4 Sec.32-34S-38W
Stevens County, Kansas

Dear Katherine McClurkan:

"Your temporary abandonment (TA) application for the well listed above has been approved. In accordance with K.A.R. 82-3-111 the TA status of this well will expire 11/26/2020.

- * If you return this well to service or plug it, please notify the District Office.
- * If you sell this well you are required to file a Transfer of Operator form, T-1.
- * If the well will remain temporarily abandoned, you must submit a new TA application, CP-111, before 11/26/2020.

You may contact me at the number above if you have questions.

Very truly yours,

Michael Maier"