

KANSAS CORPORATION COMMISSION
OIL & GAS CONSERVATION DIVISION

TEMPORARY ABANDONMENT WELL APPLICATION

OPERATOR: License#
Name:
Address 1:
Address 2:
City: State: Zip:
Contact Person:
Phone:
Contact Person Email:
Field Contact Person:
Field Contact Person Phone:

API No. 15-
Spot Description:
Sec. Twp. S. R.
feet from N / S Line of Section
feet from E / W Line of Section
GPS Location: Lat: , Long:
Datum: NAD27 NAD83 WGS84
County: Elevation: GL KB
Lease Name: Well #:
Well Type: Oil Gas OG WSW Other:
SWD Permit #: ENHR Permit #:
Gas Storage Permit #:
Spud Date: Date Shut-In:

Table with 7 columns: Conductor, Surface, Production, Intermediate, Liner, Tubing. Rows include Size, Setting Depth, Amount of Cement, Top of Cement, Bottom of Cement.

Casing Fluid Level from Surface: How Determined? Date:
Casing Squeeze(s): to w / sacks of cement, to w / sacks of cement. Date:
Do you have a valid Oil & Gas Lease? Yes No
Depth and Type: Junk in Hole at Tools in Hole at Casing Leaks: Yes No Depth of casing leak(s):
Type Completion: ALT. I ALT. II Depth of: DV Tool: w / sacks of cement Port Collar: w / sack of cement
Packer Type: Size: Inch Set at: Feet
Total Depth: Plug Back Depth: Plug Back Method:

Geological Data:

Table with 4 columns: Formation Name, Formation Top, Formation Base, Completion Information. Rows 1 and 2.

UNDER PENALTY OF PERJURY I HEREBY ATTEST THAT THE INFORMATION CONTAINED HEREIN IS TRUE AND CORRECT TO THE BEST OF MY KNOWLEDGE

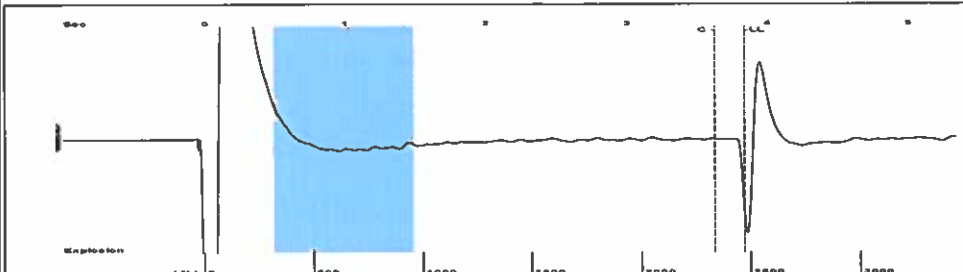
Submitted Electronically

Do NOT Write in This Space - KCC USE ONLY
Date Tested: Results: Date Plugged: Date Repaired: Date Put Back in Service:
Review Completed by: Comments:
TA Approved: Yes Denied Date:

Mail to the Appropriate KCC Conservation Office:

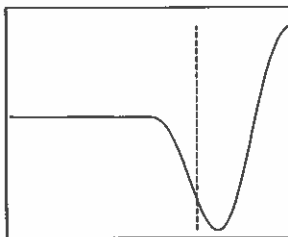
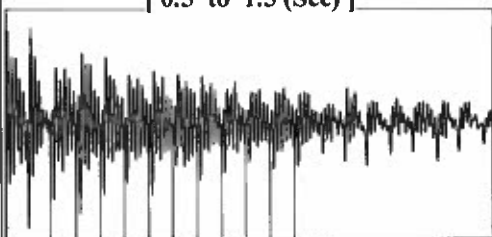
Table with 3 columns: District Office, Address, Phone. Rows for District Office #1, #2, #3, #4.

Group: TA'D WELLS Well: SANTA FE B-1 (acquired on: 12/03/19 11:27:32)



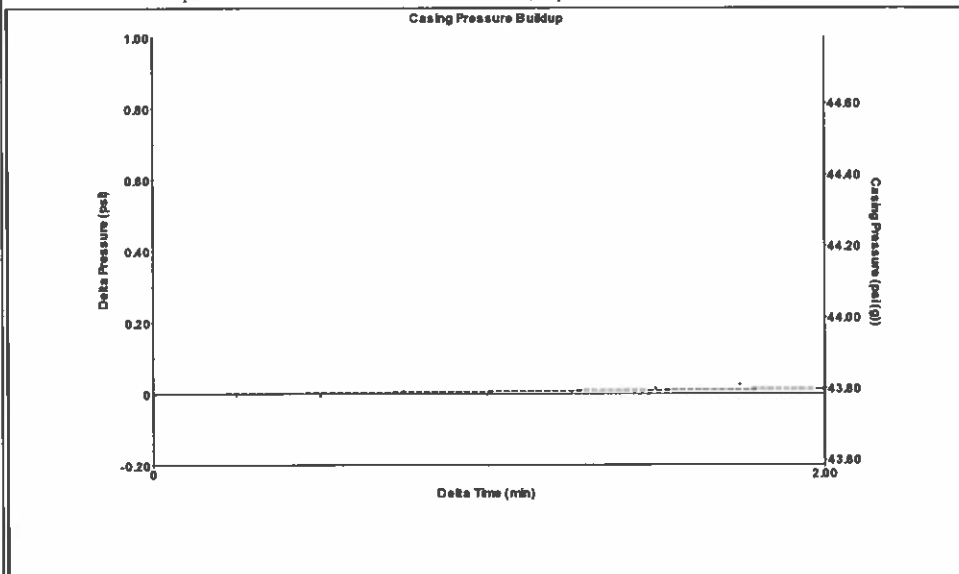
Filter Type High Pass Automatic Collar Count Yes Time 3.837 sec
 Manual Acoustic Velocity 1260 ft/s Manual JTS/sec 20 Joints 78.4221 Jts
 Depth 2470.30 ft

[0.5 to 1.5 (Sec)]



Analysis Method: Automatic

Group: TA'D WELLS Well: SANTA FE B-1 (acquired on: 12/03/19 11:27:32)

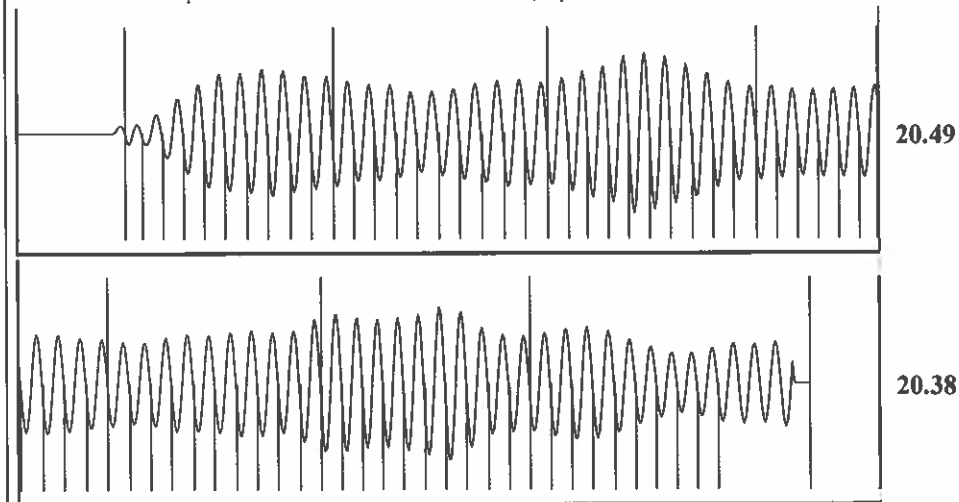


Change in Pressure 0.01 psi PT9424
 Change in Time 2.00 min Range 0 - ? psi

Group: TA'D WELLS Well: SANTA FE B-1 (acquired on: 12/03/19 11:27:32)

Production					
Current	Potential	Casing Pressure	Producing		
Oil - * -	- * - BBL/D	43.8 psi (g)	Annular		
Water - * -	- * - BBL/D	Casing Pressure Buildup	Gas Flow	0 Mscf/D	
Gas - * -	- * - Mscf/D	0.0 psi	% Liquid	100 %	
		2.00 min			
IPR Method	Vogel	Gas/Liquid Interface Pressure			
PBHP/SBHP	- * -	47.3 psi (g)			
Production Efficiency	0.0				
		Liquid Level Depth			
Oil 40 deg.API		2470.30 ft			
Water 1.05 Sp.Gr.H2O		Pump Intake Depth			
Gas 0.71 Sp.Gr.AIR		2805.00 ft			
Acoustic Velocity	1287.62 ft/s	Formation Depth			
		2869.00 ft			
Formation Submergence			Pump Intake		
Total Gaseous Liquid Column HT (TVD)	335 ft		160.3 psi (g)		
Equivalent Gas Free Liquid HT (TVD)	335 ft		Producing BHP		
			189.4 psi (g)		
Acoustic Test			Static BHP		
			- * - psi (g)		

Group: TA'D WELLS Well: SANTA FE B-1 (acquired on: 12/03/19 11:27:32)



Acoustic Velocity 1287.62 ft/s Joints counted 69
 Joints Per Second 20.4384 jts/sec Joints to liquid level 78.4221
 Depth to liquid level 2470.3 ft Filter Width 18 22
 Automatic Collar Count Yes Time to 1st Collar 0.248 3.624

December 13, 2019

Katherine McClurkan
Merit Energy Company, LLC
446 South Road M
Dallas, TX 75240

Re: Temporary Abandonment
API 15-129-10323-00-01
Santa Fe B 1
SE/4 Sec.23-33S-43W
Morton County, Kansas

Dear Katherine McClurkan:

"Your temporary abandonment (TA) application for the well listed above has been approved. In accordance with K.A.R. 82-3-111 the TA status of this well will expire 12/13/2020.

- * If you return this well to service or plug it, please notify the District Office.
- * If you sell this well you are required to file a Transfer of Operator form, T-1.
- * If the well will remain temporarily abandoned, you must submit a new TA application, CP-111, before 12/13/2020.

You may contact me at the number above if you have questions.

Very truly yours,

Michael Maier"