



WESLEY D. HANSEN Consulting Petroleum Geologist

212 N. Market, Suite 257, Wichita, KS 67202
Cellular: 316-772-6188
email: whansen4651@sbcglobal.net

**KGS
AAPG
Kansas License #418**



EAGLE CREEK CORPORATION

**Scale 1:240 (5"=100') Imperial
Measured Depth Log**

Well Name: Eagle Creek Corporation #1-17 Kristi
API: 15-171-21252
Location: 370' FSL, 1405' FEL of Section 17-20S-34W
License Number: 30129
Spud Date: 6-6-2019
Surface Coordinates: 370' FSL, 1405' FEL of Section 17-20S-34W
Region: Scott County, Kansas
Drilling Completed: 6-15-2019

**Bottom Hole Vertical hole
Coordinates:**
Ground Elevation (ft): 3102' **K.B. Elevation (ft):** 3107'
Logged Interval (ft): 3600' **To:** RTD **Total Depth (ft):** 4700'
Formation: Cherokee at TD
Type of Drilling Fluid: Chemical - displaced at 3465'-3479'

Printed by MUD.LOG from WellSight Systems 1-800-447-1534 www.WellSight.com

OPERATOR

Company: Eagle Creek Corporation
Address: 8100 East 22nd Street North
Building 1500, Suite A
Wichita, KS 67226

GEOLOGIST

Name: Wesley D. Hansen
Company: Wesley D. Hansen - Consulting Petroleum Geologist
Address: 212 N. Market, Suite 257
Wichita, KS 67202
Cellular: 316-772-6188

COMMENTS

Contractor: WW Drilling Rig 2
Pusher: Dustin Day

Surface Casing: 8 5/8" set at 287' w/250 sx
Production Casing: P&A

Mud by: Mud-Co - Tony Maestas was the engineer.

DST's by: Trilobite Testing - Bradley "Walt" Walter was the tester

Logs by: ELI - (DIL, CDL-CNL-PE, MEL) - Jeff Luebbers was the engineer

Deviation Surveys: 3/4 deg. @ 287'; 3/4 deg. @ 4536'; 3/4 deg. @ 4700'

BIT RECORD

Bit #	Size	MFG	Type	Depth Out	Footage Cut	Hours on bit
1	12 1/4"	Smith	rerun	287'	287'	4
2	7 7/8"	Smith	F-27	4700'	4413'	110

FORMATION TOPS AND STRUCTURAL COMPARISON

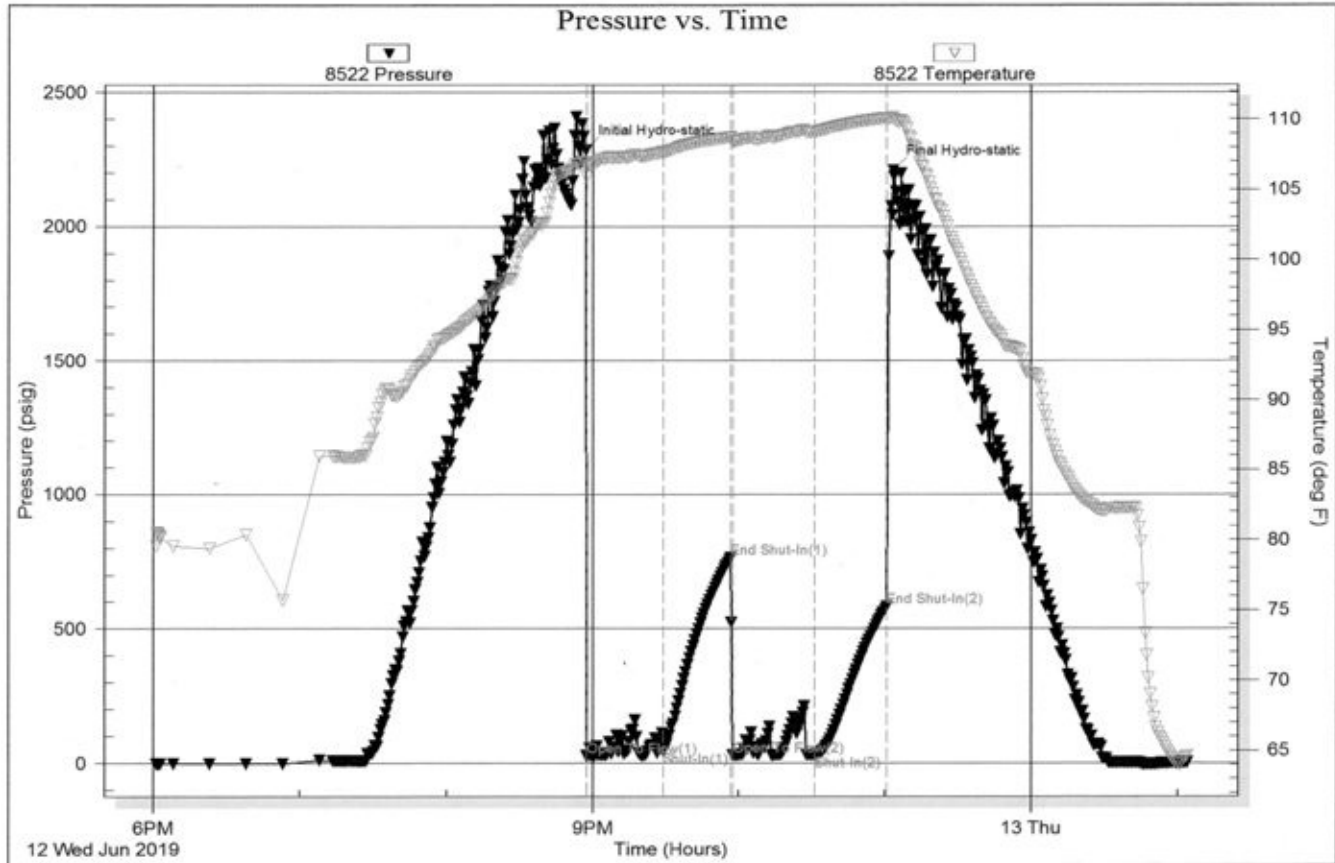
FORMATION	SAMPLE TOPS		LOG TOPS		COMPARISON WELL Abercrombie Energy, LLC #1-17 K-2 Farms 2301' FWL, 1500' FSL Section 17-20S-34W
	Depth	Datum	Depth	Datum	
	3107'	KB	3107'	KB	
Anhydrite (DT)	2268'	+839	2269'	+838	2270' +848
Base/Anhydrite (DT)	2288'	+819	2283'	+824	2288' +830
Heebner Shale	3969'	-862	3969'	-862	3969' -851
Lansing	4014'	-907	4017'	-910	4013' -895
Muncie Creek Sh.	4216'	-1109	4220'	-1113	4217' -1099
Stark Shale	4329'	-1222	4329'	-1222	4327' -1209
Hushpuckney Shale	4379'	-1272	4382'	-1275	4368' -1250
Marmaton	4504'	-1397	4497'	-1390	4494' -1376
Pawnee	4584'	-1477	4588'	-1481	4593' -1475
Fort Scott	4615'	-1508	4619'	-1512	4628' -1510
Cherokee Shale	4627'	-1520	4631'	-1524	4640' -1522
RTD	4700'	-1593			
LTD			4704'	-1597	

DRILL STEM TESTS

DST No. 1 Marmaton "A" and "B"
Interval: 4469'-4536'
Times: 30-30-30-30
Recovery: 5' mud
FP: 26-47/29-31 SIP: 765-584
HP: 2285-2208 BHT: 110 deg. F

IFP: weak <1/2 inch blow
ISIP: no return blow
FFP: no blow
FSIP: no return blow
plugging during flow periods

Serial #: 8522 Inside Eagle Creek Corporation Kristi #1-17 DST Test Number: 1

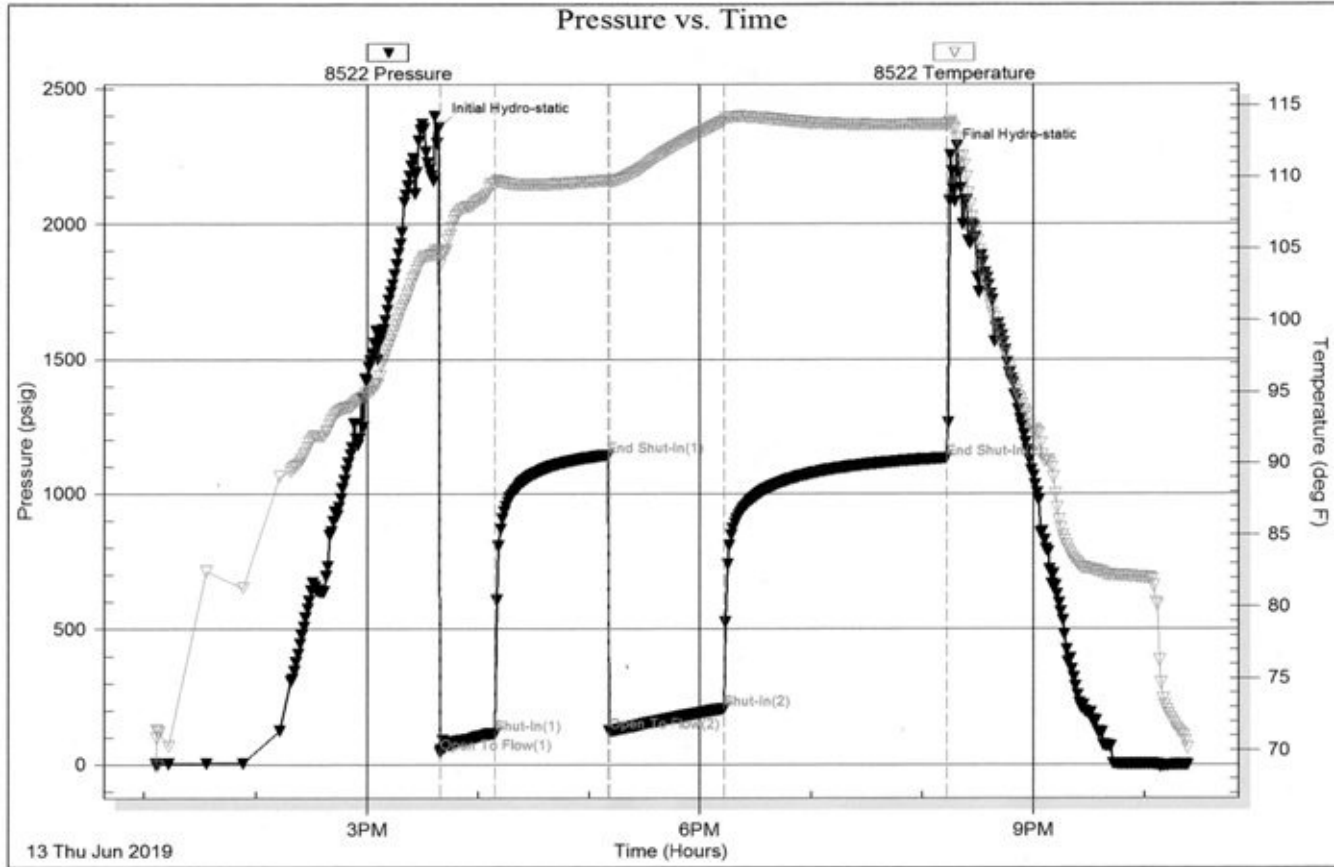


DRILL STEM TESTS

DST No. 2 Marmaton
 Interval: 4530'-4600'
 Times: 30-60-60-120
 Recovery: 350' MCW (75w, 25m) with oil spots;
 chl. 75,000 ppm, system chl. 8500 ppm
 FP: 44-113/123-205 SIP: 1142-1131
 HP: 2352-2252 BHT: 114 deg. F

IFP: weak blow bldg. to 10.5 inches
 ISIP: no return blow
 FFP: weak bow bldg. to 16 inches
 FSIP: no return blow

Serial #: 8522 Inside Eagle Creek Corporation Kristi #1-17 DST Test Number: 2



Trilobite Testing, Inc

Ref. No: 64357

Printed: 2019.06.13 @ 22:43:48

ROCK TYPES

- Anhy
- Cht
- Coal
- Congl
- Gyp
- Lmst
- Salt

- Shale
- Shcol
- Shale red
- Sltst
- Ss
- Carb sh
- Dol

- Dtd
- Gry sh
- Sandylms
- Shale green
- Sltstn
- Shlyslts
- Sltyslsh

- Sdy dolo
- Silty dolo
- Shy dolo
- Shaly ls

ACCESSORIES

FOSSIL

- Algae
- Amph
- Belm
- Bioclst
- Brach
- Bryozoa
- Cephal
- Coral
- Crin
- Echin
- Fish
- Foram
- Fossil
- Gastro
- Oolite
- Ostra
- Pelec
- Pellet
- Pisolite

- Plant
- Strom
- Fuss
- Oomold

MINERAL

- Anhy
- Arggrn
- Arg
- Bent
- Bit
- Breclrag
- Calc
- Carb
- Chtdk
- Chtlt
- Dol
- Feldspar
- Ferrpel
- Ferr

- Glau
- Gyp
- Hvymin
- Kaol
- Marl
- Minxl
- Nodule
- Phos
- Pyr
- Salt
- Sandy
- Silt
- Sil
- Sulphur
- Tuff
- Chlorite
- Dol
- Sand
- Sltly

STRINGER

- Anhy
- Arg
- Bent
- Coal
- Dol
- Gyp
- Ls
- Mrst
- Sltstrg
- Ssstrg
- Carbsh
- Clystn
- Dol
- Grysh
- Gryslt
- Lms
- Sandylms
- Sh
- Sltstn

OTHER SYMBOLS

INTERVALS

- Core
- Dst
- Dst

EVENTS

- Rft
- Dst top/base

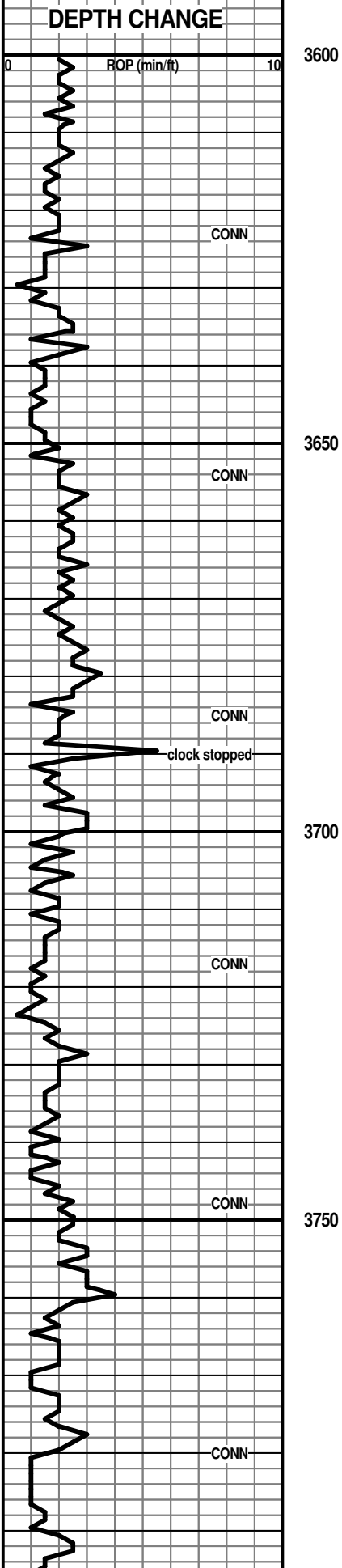
OIL SHOWS

- Even
- Spotted
- Quest.

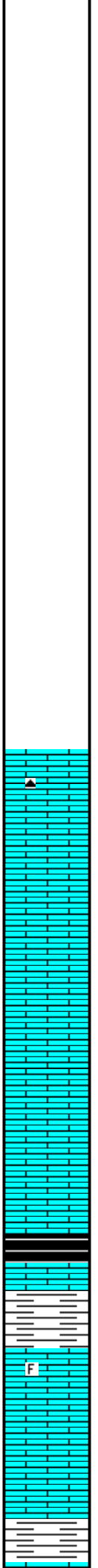
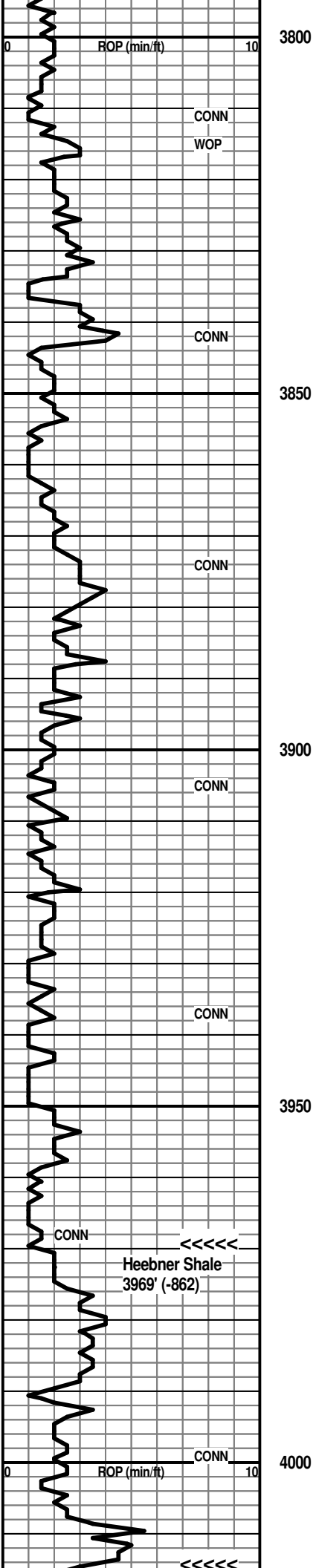
- Trace
- Dead
- Gas show

Curve Track 1 ROP (min/ft)	Depth	Lithology	Geological Descriptions	Remarks
	<p>2250</p> <p>2300</p>	<p style="text-align: center; font-size: small;">Oil Shows</p>	<p style="text-align: center;">Anhydrite 2268' (+839)</p> <p style="text-align: center;">Base/Anhy 2288' (+819)</p>	<p style="text-align: center;">Anhydrite 2268' (+839)</p> <p style="text-align: center;">Base/Anhy 2288' (+819)</p> <p style="text-align: center;">Report Depth & Activity</p> <p>6-5/6-6/2019 MIRT 6-6 Spud at 5:30 PM 6-7 287' WOC 6-8 Drlg. @ 1177' 6-9 Drlg. @ 2683' 6-10 Drlg. @ 3435' (lost returns at 2935' and 2996') 6-11 Drlg. @ 4040'</p>

6-11 Drlg. @ 4410'
6-12 Drlg. @ 4439' DST No. 1
6-13 Drlg. @ 4560' DST No. 2
6-14 CFS @ 4650'
6-15 RTD @ 4700' logging complete, P&A



Geologist on location at 3638'
at 3:00 PM on 6-10-2019



Ls: mix tan, lt brn vf-cryptoxln, some granular; offwhite micxln subchalky IP; Sh: red-beds, some gray

Ls: pred. tan, lt gray vfxln dense; shales AA

Ls: dense AA; lt brn, gray more granular, NVP; trace dark gray opq chert; Sh: red beds, gray AA

Ls: tan, lt gray, lt brn vf-cryptoxln, NVP; lesser offwhite, tan micxln, subchalky, dense; Shales AA

Ls: various dense AA; Sh: more dark gray; red beds AA

Ls: pred. offwhite, tan, lt gray mic-vfxln dense, subchalky to chalky; Sh: red beds, some gray

Ls: more tan, lt brn vf-cryptoxln

Ls: tan, lt gray, lt brn vfxln dense; offwhite chalky; Sh: still red beds with lesser gray

Ls: mix AA; incr. offwhite chalky; red beds, some gray AA

4000' spl - Ls: still chalky AA; with tan, lt brn vf-cryptoxln, NVP; Sh: sl influx black carbon.

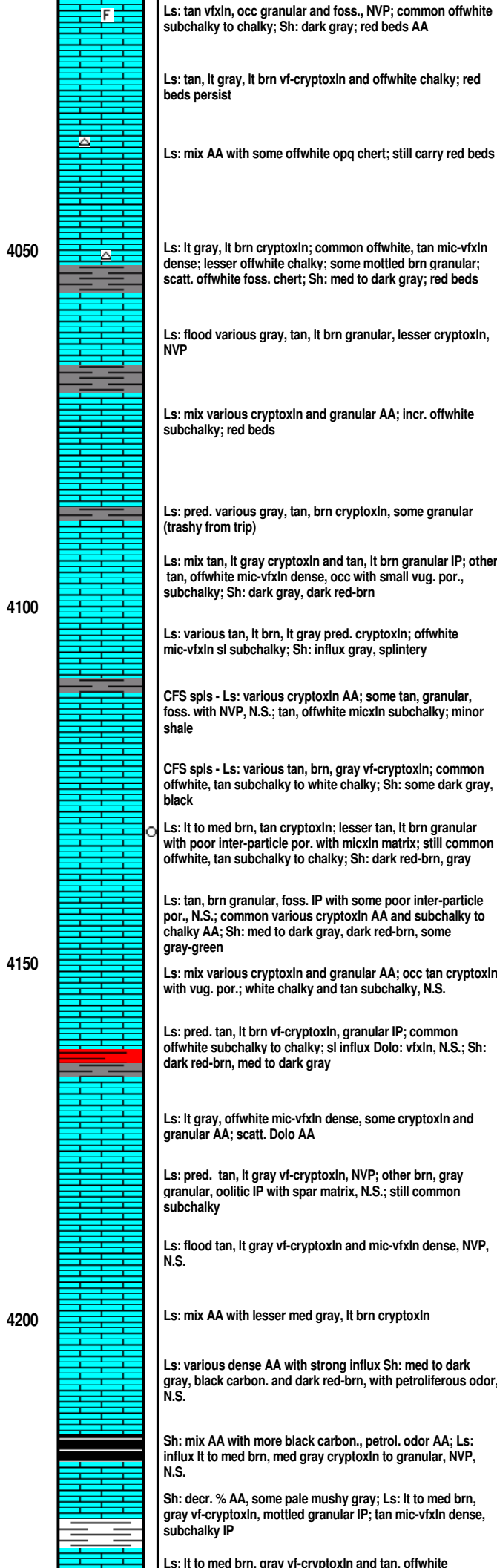
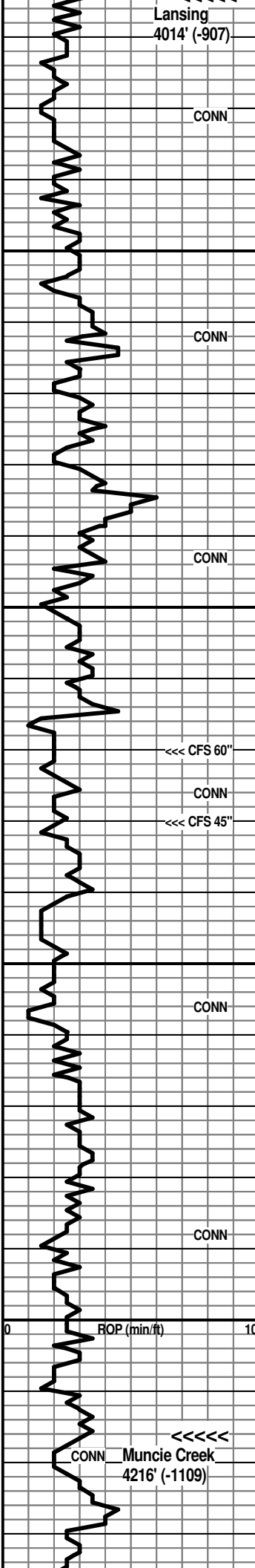
Ls: pred. tan, brn sl mottled granular, poor-NVP, occ foss.; some white chalky; Sh: gray; red beds AA

Ls: tan vfxln dense; influx offwhite, tan mic-vfxln dense and offwhite chalky; Sh: dark gray, black with red beds

Ls: offwhite chalky; tan, lt gray vf-cryptoxln; Sh: dark gray, occ brn; common red beds

Start 10' wet and dry samples

Sample quality generally poor. Much red bed shale in samples.



7:00 AM at 4040' on 6-11-2019

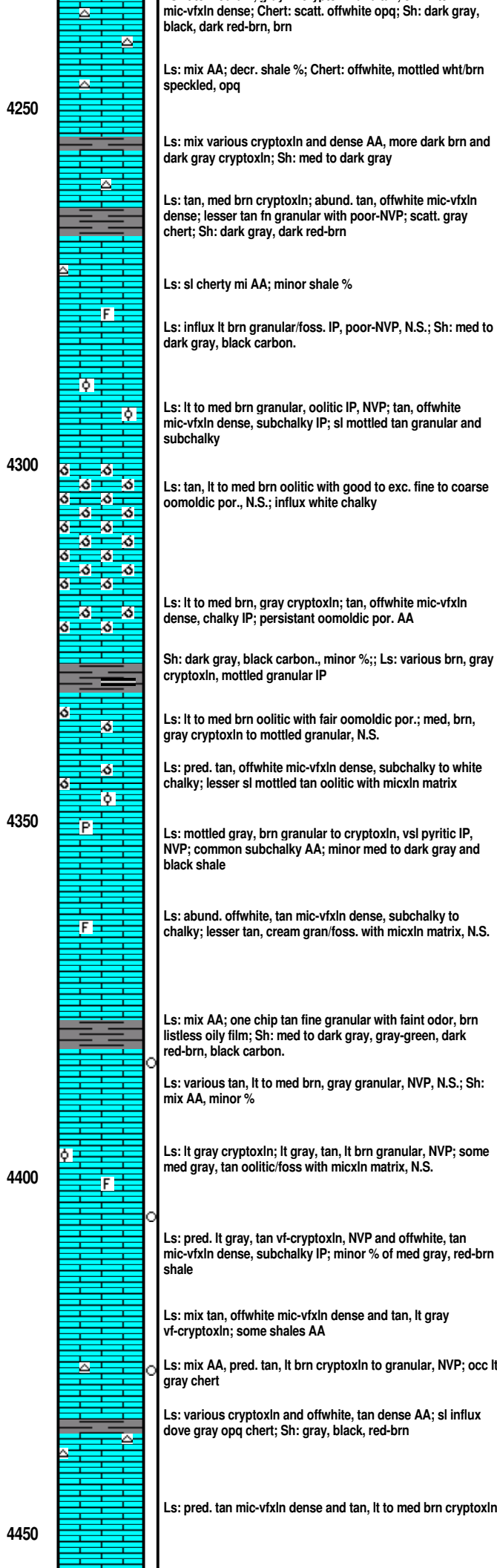
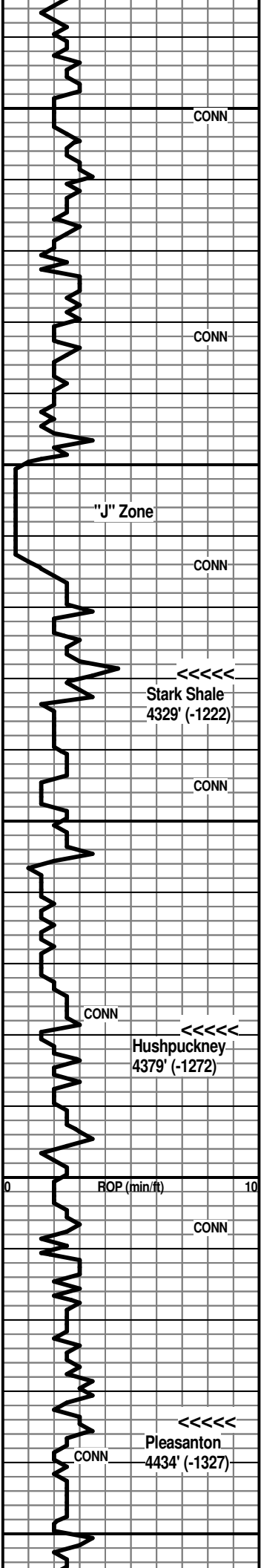
MudCo Mud Check at 4093'
 11:45 AM on 6-11-2019
 wt vis wl pH chl
 9.2 60 9.6 10.0 9600
 PV YP GelS lcm solids
 18 22 15/37 2# 5.7%

Trip to look for a hole in pipe at 4093'.
 Gradually had lost 300# of pump pressure.
 Found hole 28 stands off bottom. CTCH 45"
 after tripping for hole.

Samples good

jet hole - add premix

Muncie Creek 4216' (-1109)



mic-vfxln dense; Chert: scatt. offwhite opq; Sh: dark gray, black, dark red-brn, brn

Ls: mix AA; decr. shale %; Chert: offwhite, mottled wht/brn speckled, opq

Ls: mix various cryptoxln and dense AA, more dark brn and dark gray cryptoxln; Sh: med to dark gray

Ls: tan, med brn cryptoxln; abund. tan, offwhite mic-vfxln dense; lesser tan fn granular with poor-NVP; scatt. gray chert; Sh: dark gray, dark red-brn

Ls: sl cherty mi AA; minor shale %

Ls: influx lt brn granular/foss. IP, poor-NVP, N.S.; Sh: med to dark gray, black carbon.

Ls: lt to med brn granular, oolitic IP, NVP; tan, offwhite mic-vfxln dense, subchalky IP; sl mottled tan granular and subchalky

Ls: tan, lt to med brn oolitic with good to exc. fine to coarse oomoldic por., N.S.; influx white chalky

Ls: lt to med brn, gray cryptoxln; tan, offwhite mic-vfxln dense, chalky IP; persistant oomoldic por. AA

Sh: dark gray, black carbon., minor %;; Ls: various brn, gray cryptoxln, mottled granular IP

Ls: lt to med brn oolitic with fair oomoldic por.; med, brn, gray cryptoxln to mottled granular, N.S.

Ls: pred. tan, offwhite mic-vfxln dense, subchalky to white chalky; lesser sl mottled tan oolitic with micxln matrix

Ls: mottled gray, brn granular to cryptoxln, vsl pyritic IP, NVP; common subchalky AA; minor med to dark gray and black shale

Ls: abund. offwhite, tan mic-vfxln dense, subchalky to chalky; lesser tan, cream gran/foss. with micxln matrix, N.S.

Ls: mix AA; one chip tan fine granular with faint odor, brn listless oily film; Sh: med to dark gray, gray-green, dark red-brn, black carbon.

Ls: various tan, lt to med brn, gray granular, NVP, N.S.; Sh: mix AA, minor %

Ls: lt gray cryptoxln; lt gray, tan, lt brn granular, NVP; some med gray, tan oolitic/foss with micxln matrix, N.S.

Ls: pred. lt gray, tan vf-cryptoxln, NVP and offwhite, tan mic-vfxln dense, subchalky IP; minor % of med gray, red-brn shale

Ls: mix tan, offwhite mic-vfxln dense and tan, lt gray vf-cryptoxln; some shales AA

Ls: mix AA, pred. tan, lt brn cryptoxln to granular, NVP; occ lt gray chert

Ls: various cryptoxln and offwhite, tan dense AA; sl influx dove gray opq chert; Sh: gray, black, red-brn

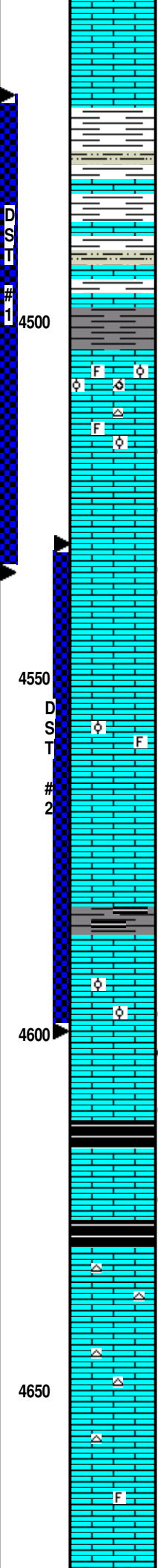
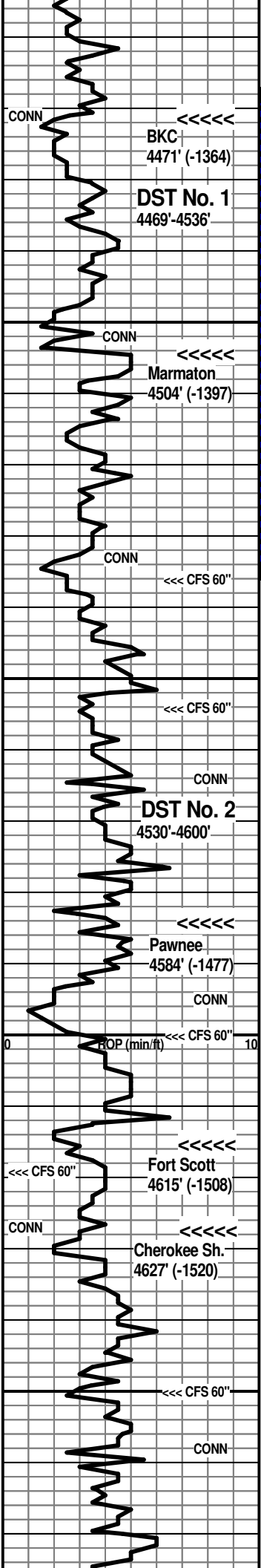
Ls: pred. tan mic-vfxln dense and tan, lt to med brn cryptoxln

Stark Shale 4329' (-1222)

Hushpuckney 4379' (-1272)

Pleasanton 4434' (-1327)

7:00 AM at 4439' on 6-12-2019



Ls: mix AA; some dark brn cryptoxln; with incr. % Sh: med to dark gray, black, dark red-brn, dark brn

Ls: pred. dark brn cryptoxln; tan, offwhite, lt gray mic-vfxln, NVP, N.S.

Sh: abund. dark red-brn and gray, some gray-green and pyritic gray; Siltst: trace red-brn

Ls: abund. various cryptoxln and dense AA; Sh: mix AA with Siltst: gray, lt brn, red-brn

Ls/Sh/Siltst mix AA

Sh: influx dark gray to black in 20' spl

Ls: lt to med brn, gray-brn cryptoxln; some tan, cream oolitic/foss with poor oomoldic por., N.S.; trace tan oolitic with spar matrix

Ls: tan, lt to med brn granular, NVP; influx white chalky; scatt. lt brn chert, N.S.

4536' spl - Ls: more med to dark brn cryptoxln, NVP; other tan gran. ool./foss. poor por., N.S.; one chip tan vfxln with lt even stain, gas bubbles on surface; one chip tan vfxln with spotty ppt stain, trace fo, ft odor

CFS 4536' 20" spl - Ls: influx mottled dark gray gran., dark brn gran., NVP, N.S.; 4 chips tan, brn cryptoxln to gran. poor por. with spotty ppt stain, sl shows dark fo, no odor, looks tight; 40" spl - Ls: pred. tan, lt brn gran., NVP; abund. tan, offwhite mic-vfxln dense, subchalky to chalky; 4-5 chips lt brn more gran., poor inter-particle por., with ppt stain, sfo, sg, no odor

4554' spl - trashy from trip; Ls: mix lt brn, gray oolitic, mottled NVP; lt to med brn, gray mottled gran.; other med to dark gray cryptoxln

Ls: various tan, lt to med brn granular to oolitic IP, micxln to spar matrix, occ foss.; lesser tan, brn cryptoxln; Sh: vc gray

Ls: influx lt to med gray mic-vfxln dense; gray, tan, brn cryptoxln, NVP

Ls: lt to med gray vfxln dense, shaly/silty IP; lesser gray cryptoxln and tan, offwhite mic-vfxln dense

Sh: sl influx black carbon, fissile; Ls: various gray dense, shaly/silty AA; incr. gray, brn cryptoxln; some mottled dark gray, dark brn granular, NVP, N.S.

CFS 4600' spls - incr. shale % AA; Ls: mix AA; several chips tan gran/oolitic with fair inter-particle and inter-oolitic por. with ft odor, sfo, patchy to subsat stn in dry spls

Ls: lt to med brn, gray cryptoxln, some mottled gran; tan mic-vfxln dense; one chip with spotty ppt stn, trace scummy brn oily film, nfo

CFS 4619' spl - Sh: abund. dark gray, black carbon.; Ls: various brn, gray cryptoxln to gran.; two chips tan vfxln with poor inter-particle por. with patchy to lt even stain, sfo, gas bubbles on chip, tight

Ls: various dense AA with influx dark brn, gray cryptoxln; one chip tan granular with patchy stn, nfo, tight; Sh: black carbon., dark gray

Ls: influx various brn, tan, gray gran., NVP; 1-2 chips dense with patchy stain, no odor, nfo; Chert: sl influx mottled brn/gray oolitic

CFS 4650' spls - Ls: mix various gray and brn vf-cryptoxln, mottled gran. IP; abund. various tan, offwhite, lt gray mic-vfxln dense; Chert: occ oolitic and dark brn

Ls: various brn, gray, tan cryptoxln; common med gray vfxln dense, shaly; scatt. gray and brn chert; Sh: thin beds of dark gray to black

Ls: various brn, gray vf-cryptoxln, occ foss., some granular; offwhite, tan mic-vfxln dense; Sh: thin gray and black AA, some mushy pale gray and white clayey

BKC 4471 (-1364)

DST No. 1 Marmaton "A" and "B"
Interval: 4469'-4536'
Times: 30-30-30-30
IFP: weak <1/2 inch blow
ISIP: no return blow
FFP: no blow
FSIP: no return blow
plugging during flow periods
Recovery: 5' mud
FP: 26-47/29-31 SIP: 765-584
HP: 2285-2208 BHT: 110 deg. F

Marmaton 4504' (-1397)

MudCo Mud Check at 4518'
11:30 AM on 6-12-2019
wt vis wl pH chl
9.2 52 9.6 9.5 8500
PV YP GelS lcm solids
15 17 12/33 2# 5.8%

CFS 4536' 60" spl - Ls: pred. offwhite, tan, lt gray gran. with micxln matrix

Pipe strap at 4536' was 0.21' long to board

CFS 4554' 30" spl - still trashy, Ls; brn, dark gray gran. to ool IP, NVP, N.S.; lt brn, tan oolitic with spar matrix; common gray shale; 60" spl - Sh: more med to dark gray, black; Ls: var. brn, gray gran. to sl oolitic, NVP; tan gran. to oolitic with micxln matrix, N.S.

7:00 AM at 4560' on 6-13-2019

DST No. 2 Marmaton
Interval: 4530'-4600'
Times: 30-60-60-120
IFP: weak blow bldg. to 10.5 inches
ISIP: no return blow
FFP: weak bow bldg. to 16 inches
FSIP: no return blow
Recovery: 350' MCW (75w, 25m) with oil spots; chl. 75,000 ppm, system chl. 8500 ppm
FP: 44-113/123-205 SIP: 1142-1131
HP: 2352-2252 BHT: 114 deg. F

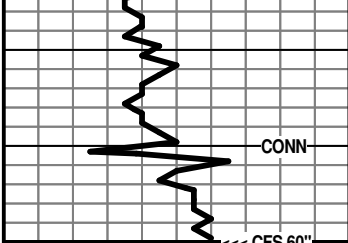
Pawnee 4584' (-1477)

MudCo Mud Check at 4600'
11:00 AM on 6-13-2019
wt vis wl pH chl
9.2 58 9.6 10.0 9000
PV YP GelS lcm solids
17 21 14/36 2# 5.7%

Fort Scott 4615' (-1508)

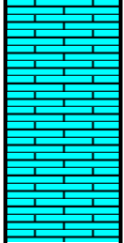
Cherokee Sh. 4627' (-1520)

7:00 AM at 4650' on 6-14-2019



RTD 4700' (-1593)
LTD 4704' (-1597)

4700



Ls: influx med to dark brn mottled granular, lesser cryptoxln;
Sh: dark gray to black

Ls: med brn and gray cryptoxln; decr. mottled gran.; abund.
various tan, offwhite, lt gray mic-vfxln dense; some tan fn
granular with micxln matrix; Sh: incr. % dark gray, black

CFS 4700' spls - Ls: various dense AA with more med to dark
brn, gray granular to cryptoxln

After review of samples, DST results and open
hole log evaluations, the decision was made to
plug the Kristi #1-17 as a dry hole.

Respectfully submitted,

Wesley D. Hansen
Petroleum Geologist
Kansas License No. 418

MudCo Mud Check at 4688'
10:45 AM on 6-14-2019
wt vis wl pH chl
9.2 60 9.6 10.0 9000
PV YP GeIS lcm solids
18 22 15/37 1# 5.7%