



DRILL STEM TEST REPORT

Prepared For: **Charter Energy Inc**

PO Box 252
Great Bend KS 67530+0252

ATTN: Wyatt Urban

Trump #2

1-20s-14w Barton,KS

Start Date: 2019.08.29 @ 07:57:00

End Date: 2019.08.29 @ 13:04:30

Job Ticket #: 65807 DST #: 1

Trilobite Testing, Inc
1515 Commerce Parkway Hays, KS 67601
ph: 785-625-4778 fax: 785-625-5620

Printed: 2019.09.06 @ 09:07:42



TRILOBITE TESTING, INC.

DRILL STEM TEST REPORT

Charter Energy Inc
 PO Box 252
 Great Bend KS 67530+0252
 ATTN: Wyatt Urban

1-20s-14w Barton,KS
Trump #2
 Job Ticket: 65807 **DST#: 1**
 Test Start: 2019.08.29 @ 07:57:00

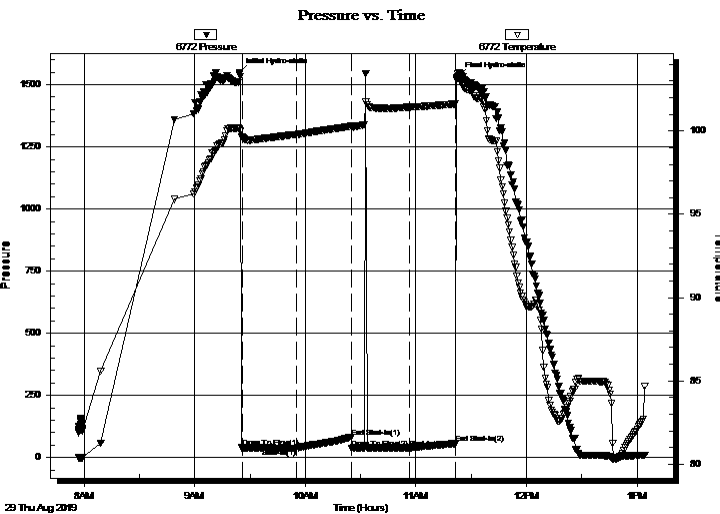
GENERAL INFORMATION:

Formation: **LKC A-F**
 Deviated: No Whipstock: ft (KB)
 Time Tool Opened: 09:25:40
 Time Test Ended: 13:04:30
 Interval: **3209.00 ft (KB) To 3294.00 ft (KB) (TVD)**
 Total Depth: 3294.00 ft (KB) (TVD)
 Hole Diameter: 7.88 inches Hole Condition: Fair
 Test Type: Conventional Bottom Hole (Initial)
 Tester: Benny Mulligan
 Unit No: 66
 Reference Elevations: 1874.00 ft (KB)
 1869.00 ft (CF)
 KB to GR/CF: 5.00 ft

Serial #: 6772 Outside

Press@RunDepth: 39.12 psig @ 3210.00 ft (KB) Capacity: 8000.00 psig
 Start Date: 2019.08.29 End Date: 2019.08.29 Last Calib.: 2019.08.29
 Start Time: 07:57:01 End Time: 13:04:30 Time On Btm: 2019.08.29 @ 09:24:20
 Time Off Btm: 2019.08.29 @ 11:23:10

TEST COMMENT: IF-30- total build of 1 1/2"
 IS-30- no blow back
 FF-30- w as dead on open flushed tool and had weak surface blow that died again after 15 mins
 FS- no blow back



PRESSURE SUMMARY

Time (Min.)	Pressure (psig)	Temp (deg F)	Annotation
0	1547.52	100.12	Initial Hydro-static
2	39.97	99.63	Open To Flow (1)
31	37.65	99.79	Shut-In(1)
61	82.60	100.29	End Shut-In(1)
61	38.46	100.24	Open To Flow (2)
93	39.12	101.44	Shut-In(2)
118	56.29	101.62	End Shut-In(2)
119	1531.92	103.48	Final Hydro-static

Recovery

Length (ft)	Description	Volume (bbl)
40.00	Mud 100%M	0.56

Gas Rates

Choke (inches)	Pressure (psig)	Gas Rate (Mcf/d)



**TRILOBITE
TESTING, INC.**

DRILL STEM TEST REPORT

TOOL DIAGRAM

Charter Energy Inc
 PO Box 252
 Great Bend KS 67530+0252
 ATTN: Wyatt Urban

1-20s-14w Barton,KS
Trump #2
 Job Ticket: 65807 **DST#: 1**
 Test Start: 2019.08.29 @ 07:57:00

Tool Information

Drill Pipe:	Length: 3209.00 ft	Diameter: 3.80 inches	Volume: 45.01 bbl	Tool Weight:	2000.00 lb
Heavy Wt. Pipe:	Length: 0.00 ft	Diameter: 0.00 inches	Volume: 0.00 bbl	Weight set on Packer:	25000.00 lb
Drill Collar:	Length: 0.00 ft	Diameter: 0.00 inches	Volume: 0.00 bbl	Weight to Pull Loose:	85000.00 lb
			<u>Total Volume: 45.01 bbl</u>	Tool Chased	10.00 ft
Drill Pipe Above KB:	20.00 ft			String Weight: Initial	61000.00 lb
Depth to Top Packer:	3209.00 ft			Final	61000.00 lb
Depth to Bottom Packer:	ft				
Interval between Packers:	85.00 ft				
Tool Length:	105.00 ft				
Number of Packers:	2	Diameter: 6.75 inches			

Tool Comments:

Tool Description	Length (ft)	Serial No.	Position	Depth (ft)	Accum. Lengths
-------------------------	--------------------	-------------------	-----------------	-------------------	-----------------------

Change Over Sub	1.00			3190.00	
Shut In Tool	5.00			3195.00	
Hydraulic tool	5.00			3200.00	
Packer	5.00			3205.00	20.00 Bottom Of Top Packer
Packer	4.00			3209.00	
Stubb	1.00			3210.00	
Recorder	0.00	6769	Inside	3210.00	
Recorder	0.00	6772	Outside	3210.00	
Perforations	15.00			3225.00	
Change Over Sub	1.00			3226.00	
Drill Pipe	64.00			3290.00	
Change Over Sub	1.00			3291.00	
Bullnose	3.00			3294.00	85.00 Bottom Packers & Anchor

Total Tool Length: 105.00



**TRILOBITE
TESTING, INC.**

DRILL STEM TEST REPORT

FLUID SUMMARY

Charter Energy Inc
 PO Box 252
 Great Bend KS 67530+0252
 ATTN: Wyatt Urban

1-20s-14w Barton,KS
Trump #2
 Job Ticket: 65807 **DST#: 1**
 Test Start: 2019.08.29 @ 07:57:00

Mud and Cushion Information

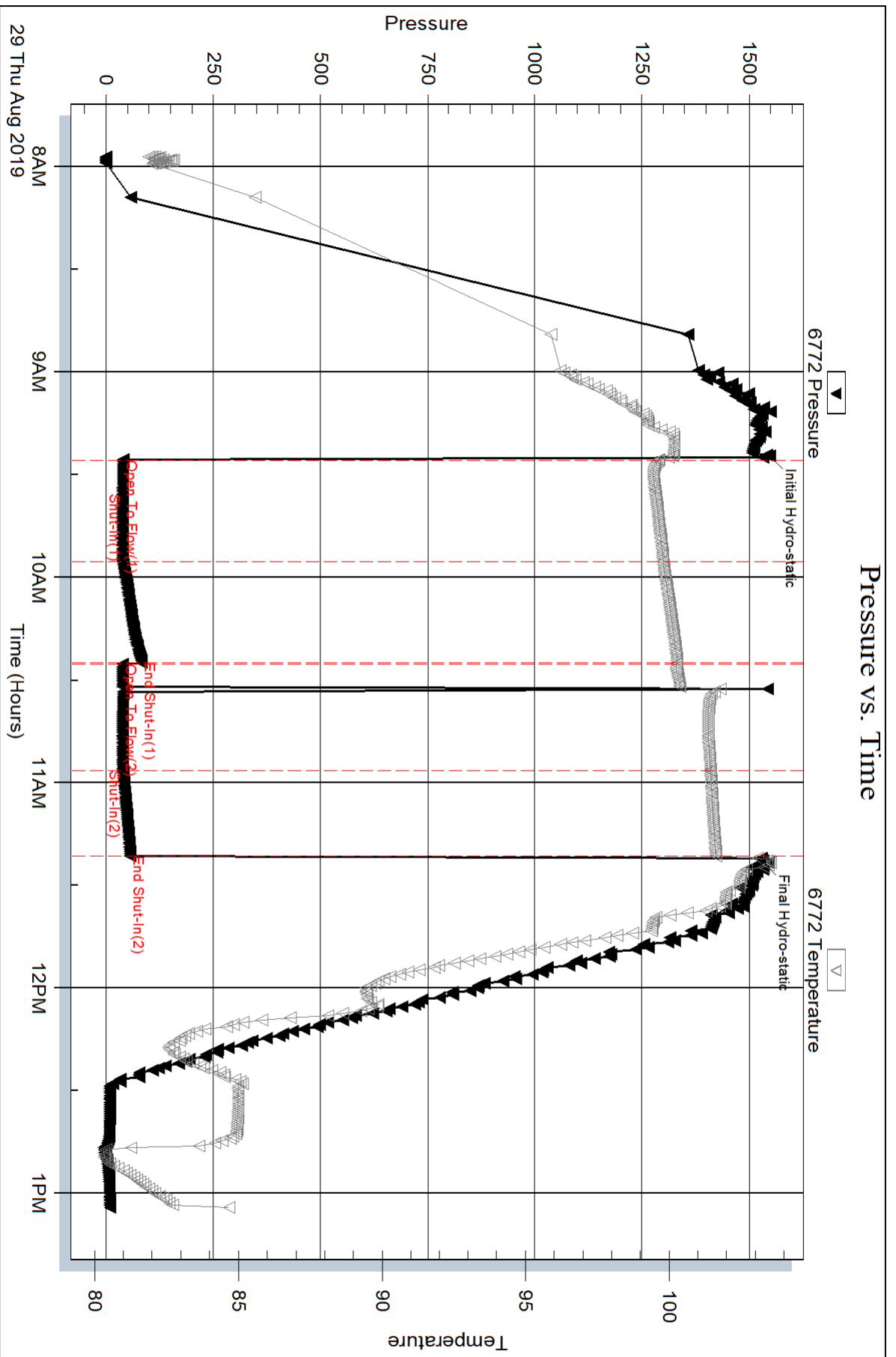
Mud Type: Gel Chem	Cushion Type:	Oil API:	deg API
Mud Weight: 9.00 lb/gal	Cushion Length: ft	Water Salinity:	ppm
Viscosity: 48.00 sec/qt	Cushion Volume: bbl		
Water Loss: 8.77 in ³	Gas Cushion Type:		
Resistivity: ohm.m	Gas Cushion Pressure: psig		
Salinity: 3200.00 ppm			
Filter Cake: 1.00 inches			

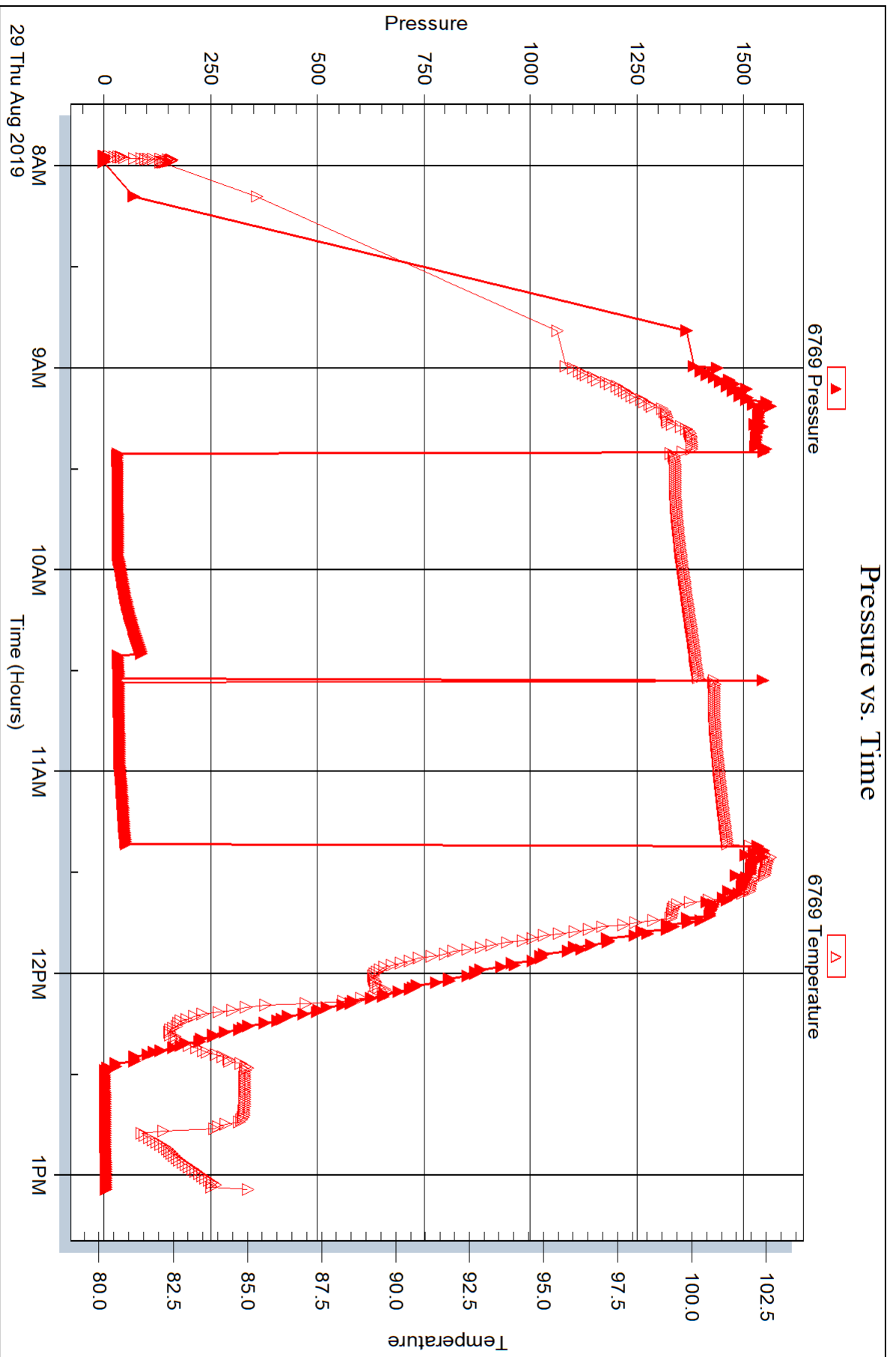
Recovery Information

Recovery Table

Length ft	Description	Volume bbl
40.00	Mud 100%M	0.561

Total Length: 40.00 ft Total Volume: 0.561 bbl
 Num Fluid Samples: 0 Num Gas Bombs: 0 Serial #:
 Laboratory Name: Laboratory Location:
 Recovery Comments:







DRILL STEM TEST REPORT

Prepared For: **Charter Energy Inc**

PO Box 252
Great Bend KS 67530+0252

ATTN: Wyatt Urban

Trump #2

1-20s-14w Barton,KS

Start Date: 2019.08.29 @ 20:53:00

End Date: 2019.08.30 @ 02:35:00

Job Ticket #: 65808 DST #: 2

Trilobite Testing, Inc
1515 Commerce Parkway Hays, KS 67601
ph: 785-625-4778 fax: 785-625-5620

Printed: 2019.09.06 @ 09:07:12



TRILOBITE TESTING, INC.

DRILL STEM TEST REPORT

Charter Energy Inc
 PO Box 252
 Great Bend KS 67530+0252
 ATTN: Wyatt Urban

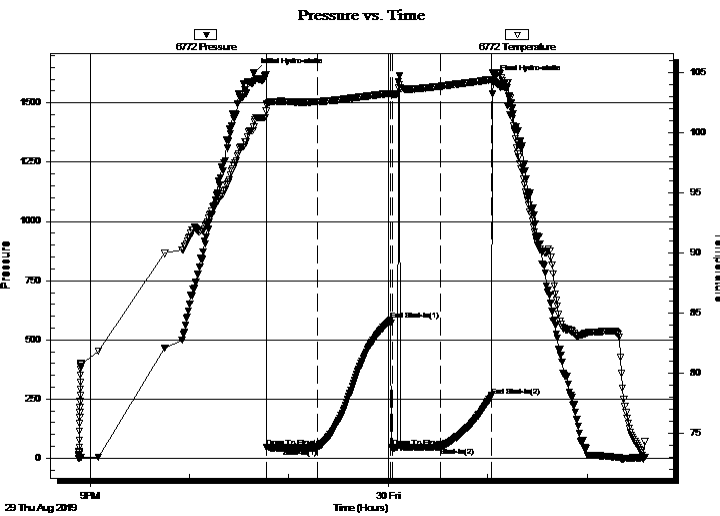
1-20s-14w Barton,KS
Trump #2
 Job Ticket: 65808 **DST#: 2**
 Test Start: 2019.08.29 @ 20:53:00

GENERAL INFORMATION:

Formation: **LKC- H**
 Deviated: No Whipstock: ft (KB)
 Test Type: Conventional Bottom Hole (Initial)
 Time Tool Opened: 22:46:40 Tester: Benny Mulligan
 Time Test Ended: 02:35:00 Unit No: 66
 Interval: **3334.00 ft (KB) To 3358.00 ft (KB) (TVD)** Reference Elevations: 1874.00 ft (KB)
 Total Depth: 3358.00 ft (KB) (TVD) 1869.00 ft (CF)
 Hole Diameter: 7.88 inches Hole Condition: Fair KB to GR/CF: 5.00 ft

Serial #: 6772 Inside
 Press@RunDepth: 47.35 psig @ 3335.00 ft (KB) Capacity: 8000.00 psig
 Start Date: 2019.08.29 End Date: 2019.08.30 Last Calib.: 2019.08.30
 Start Time: 20:53:01 End Time: 02:35:00 Time On Btm: 2019.08.29 @ 22:39:10
 Time Off Btm: 2019.08.30 @ 01:03:40

TEST COMMENT: IF-30- Built to 5 1/2" and dropped 4" towards end of open
 IS-45- No blow back
 FF-30- Was dead flushed and got weak surface blow that died
 FS-30- No blow back



PRESSURE SUMMARY

Time (Min.)	Pressure (psig)	Temp (deg F)	Annotation
0	1628.85	100.88	Initial Hydro-static
8	45.73	102.27	Open To Flow (1)
38	44.05	102.56	Shut-In(1)
83	583.44	103.25	End Shut-In(1)
84	44.72	103.12	Open To Flow (2)
113	47.35	103.84	Shut-In(2)
144	264.00	104.40	End Shut-In(2)
145	1596.53	104.97	Final Hydro-static

Recovery

Length (ft)	Description	Volume (bbl)
60.00	O.S.M 100%M	0.84

Gas Rates

	Choke (inches)	Pressure (psig)	Gas Rate (Mcf/d)



**TRILOBITE
TESTING, INC.**

DRILL STEM TEST REPORT

TOOL DIAGRAM

Charter Energy Inc
PO Box 252
Great Bend KS 67530+0252
ATTN: Wyatt Urban

1-20s-14w Barton,KS
Trump #2
Job Ticket: 65808 **DST#: 2**
Test Start: 2019.08.29 @ 20:53:00

Tool Information

Drill Pipe:	Length: 3330.00 ft	Diameter: 3.80 inches	Volume: 46.71 bbl	Tool Weight: 2000.00 lb
Heavy Wt. Pipe:	Length: 0.00 ft	Diameter: 0.00 inches	Volume: 0.00 bbl	Weight set on Packer: 25000.00 lb
Drill Collar:	Length: 0.00 ft	Diameter: 0.00 inches	Volume: 0.00 bbl	Weight to Pull Loose: 76000.00 lb
			<u>Total Volume: 46.71 bbl</u>	Tool Chased 8.00 ft
Drill Pipe Above KB:	16.00 ft			String Weight: Initial 63000.00 lb
Depth to Top Packer:	3334.00 ft			Final 63000.00 lb
Depth to Bottom Packer:	ft			
Interval between Packers:	24.00 ft			
Tool Length:	44.00 ft			
Number of Packers:	2	Diameter: 6.75 inches		

Tool Comments:

Tool Description	Length (ft)	Serial No.	Position	Depth (ft)	Accum. Lengths
-------------------------	--------------------	-------------------	-----------------	-------------------	-----------------------

Change Over Sub	1.00			3315.00	
Shut In Tool	5.00			3320.00	
Hydraulic tool	5.00			3325.00	
Packer	5.00			3330.00	20.00 Bottom Of Top Packer
Packer	4.00			3334.00	
Stubb	1.00			3335.00	
Recorder	0.00	6772	Inside	3335.00	
Recorder	0.00	6769	Outside	3335.00	
Perforations	20.00			3355.00	
Bullnose	3.00			3358.00	24.00 Bottom Packers & Anchor
Total Tool Length:	44.00				



**TRILOBITE
TESTING, INC.**

DRILL STEM TEST REPORT

FLUID SUMMARY

Charter Energy Inc
PO Box 252
Great Bend KS 67530+0252
ATTN: Wyatt Urban

1-20s-14w Barton,KS
Trump #2
Job Ticket: 65808 **DST#: 2**
Test Start: 2019.08.29 @ 20:53:00

Mud and Cushion Information

Mud Type: Gel Chem	Cushion Type:	Oil API:	deg API
Mud Weight: 9.00 lb/gal	Cushion Length: ft	Water Salinity:	ppm
Viscosity: 48.00 sec/qt	Cushion Volume: bbl		
Water Loss: 8.78 in ³	Gas Cushion Type:		
Resistivity: ohm.m	Gas Cushion Pressure: psig		
Salinity: 3200.00 ppm			
Filter Cake: 1.00 inches			

Recovery Information

Recovery Table

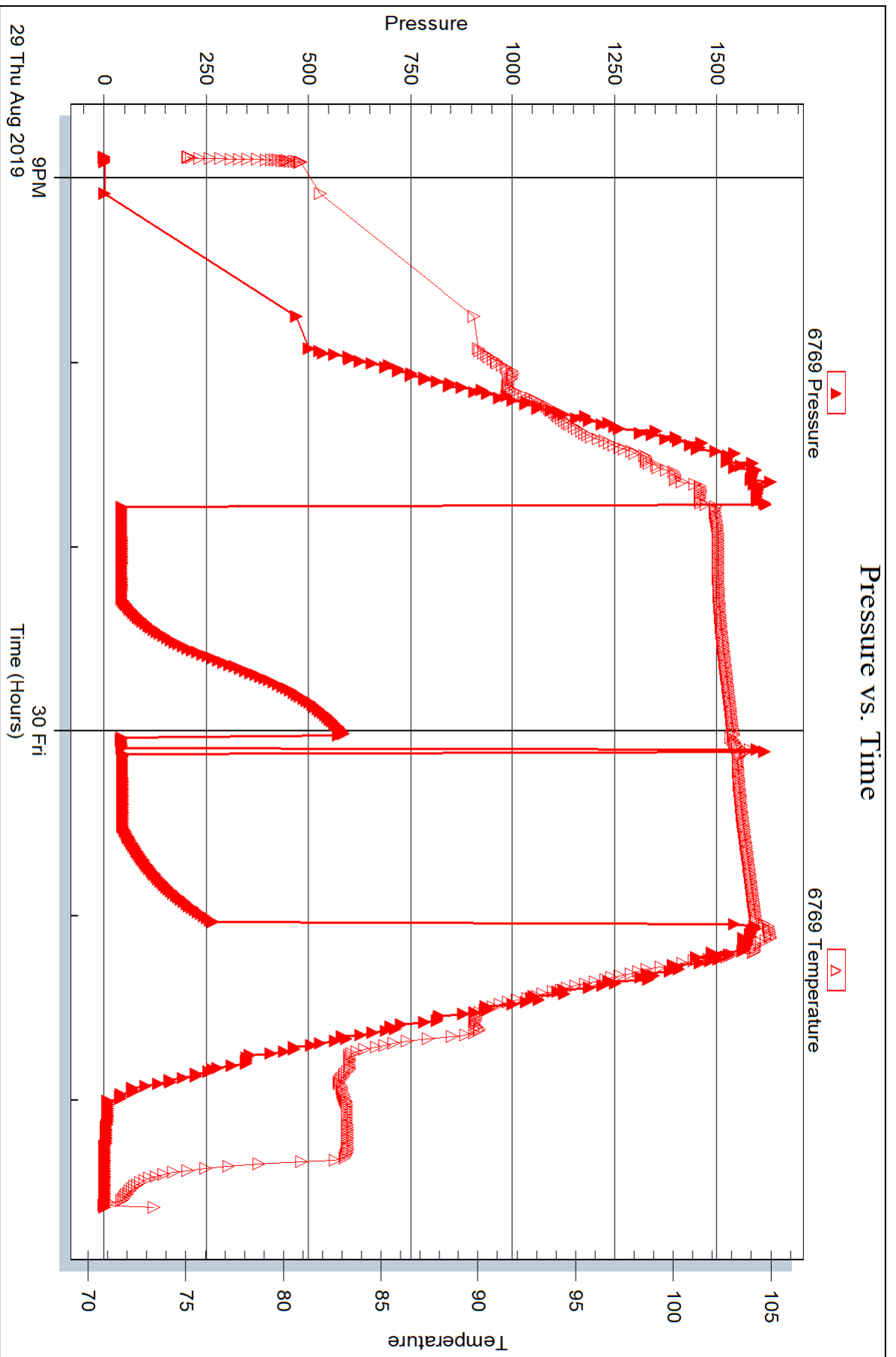
Length ft	Description	Volume bbl
60.00	O.S.M 100%M	0.842

Total Length: 60.00 ft Total Volume: 0.842 bbl

Num Fluid Samples: 0 Num Gas Bombs: 0 Serial #:

Laboratory Name: Laboratory Location:

Recovery Comments:





DRILL STEM TEST REPORT

Prepared For: **Charter Energy Inc**

PO Box 252
Great Bend KS 67530+0252

ATTN: Wyatt Urban

Trump #2

1-20s-14w Barton,KS

Start Date: 2019.08.30 @ 10:56:00

End Date: 2019.08.30 @ 16:49:20

Job Ticket #: 65809 DST #: 3

Trilobite Testing, Inc
1515 Commerce Parkway Hays, KS 67601
ph: 785-625-4778 fax: 785-625-5620

Printed: 2019.09.06 @ 09:06:47



TRILOBITE TESTING, INC.

DRILL STEM TEST REPORT

Charter Energy Inc
 PO Box 252
 Great Bend KS 67530+0252
 ATTN: Wyatt Urban

1-20s-14w Barton,KS
Trump #2
 Job Ticket: 65809 **DST#: 3**
 Test Start: 2019.08.30 @ 10:56:00

GENERAL INFORMATION:

Formation: **LKC H-I**
 Deviated: No Whipstock: ft (KB)
 Time Tool Opened: 12:19:10
 Time Test Ended: 16:49:20
 Interval: **3336.00 ft (KB) To 3410.00 ft (KB) (TVD)**
 Total Depth: 3410.00 ft (KB) (TVD)
 Hole Diameter: 7.88 inches Hole Condition: Fair
 Test Type: Conventional Bottom Hole (Initial)
 Tester: Benny Mulligan
 Unit No: 66
 Reference Elevations: 1874.00 ft (KB)
 1869.00 ft (CF)
 KB to GR/CF: 5.00 ft

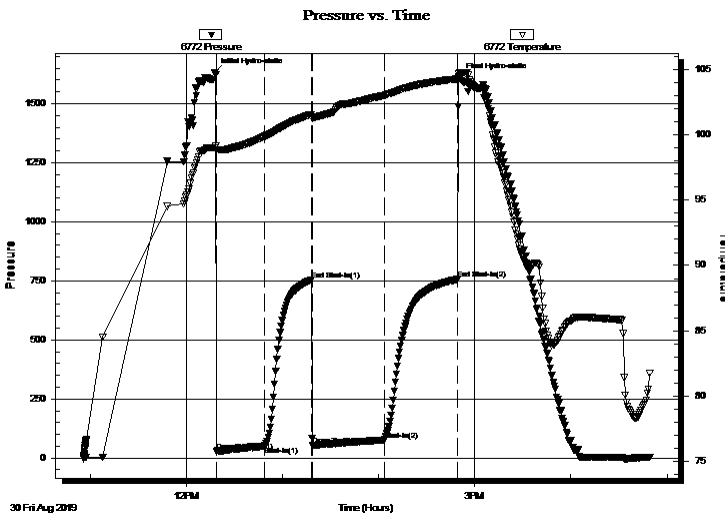
Serial #: 6772

Inside

Press@RunDepth: 76.16 psig @ 3337.00 ft (KB) Capacity: 8000.00 psig
 Start Date: 2019.08.30 End Date: 2019.08.30 Last Calib.: 2019.08.30
 Start Time: 10:56:01 End Time: 16:49:20 Time On Btm: 2019.08.30 @ 12:17:50
 Time Off Btm: 2019.08.30 @ 14:50:10

TEST COMMENT: IF-30- Built to 10 1/2 "
 ISI-30- No blow back
 FF-45- Built to 8"
 FSI-45- No blow back

PRESSURE SUMMARY



Time (Min.)	Pressure (psig)	Temp (deg F)	Annotation
0	1632.11	99.02	Initial Hydro-static
2	29.67	98.84	Open To Flow (1)
31	49.87	99.88	Shut-In(1)
60	752.98	101.57	End Shut-In(1)
61	54.39	101.39	Open To Flow (2)
106	76.16	103.03	Shut-In(2)
152	756.25	104.28	End Shut-In(2)
153	1611.11	104.66	Final Hydro-static

Recovery

Length (ft)	Description	Volume (bbl)
60.00	O.S.M. 1%O 99%M	0.84
60.00	M.W. 20%M 80%W	0.84

Gas Rates

Choke (inches)	Pressure (psig)	Gas Rate (Mcf/d)



**TRILOBITE
TESTING, INC.**

DRILL STEM TEST REPORT

TOOL DIAGRAM

Charter Energy Inc
PO Box 252
Great Bend KS 67530+0252
ATTN: Wyatt Urban

1-20s-14w Barton,KS
Trump #2
Job Ticket: 65809 **DST#: 3**
Test Start: 2019.08.30 @ 10:56:00

Tool Information

Drill Pipe:	Length: 3338.00 ft	Diameter: 3.80 inches	Volume: 46.82 bbl	Tool Weight:	2000.00 lb
Heavy Wt. Pipe:	Length: 0.00 ft	Diameter: 0.00 inches	Volume: 0.00 bbl	Weight set on Packer:	25000.00 lb
Drill Collar:	Length: 0.00 ft	Diameter: 0.00 inches	Volume: 0.00 bbl	Weight to Pull Loose:	70000.00 lb
			<u>Total Volume: 46.82 bbl</u>	Tool Chased	6.00 ft
Drill Pipe Above KB:	22.00 ft			String Weight: Initial	64000.00 lb
Depth to Top Packer:	3336.00 ft			Final	64000.00 lb
Depth to Bottom Packer:	ft				
Interval between Packers:	74.00 ft				
Tool Length:	94.00 ft				
Number of Packers:	2	Diameter: 6.75 inches			

Tool Comments:

Tool Description	Length (ft)	Serial No.	Position	Depth (ft)	Accum. Lengths
-------------------------	--------------------	-------------------	-----------------	-------------------	-----------------------

Change Over Sub	1.00			3317.00	
Shut In Tool	5.00			3322.00	
Hydraulic tool	5.00			3327.00	
Packer	5.00			3332.00	20.00 Bottom Of Top Packer
Packer	4.00			3336.00	
Stubb	1.00			3337.00	
Recorder	0.00	6772	Inside	3337.00	
Recorder	0.00	6769	Outside	3337.00	
Perforations	4.00			3341.00	
Change Over Sub	1.00			3342.00	
Drill Pipe	64.00			3406.00	
Change Over Sub	1.00			3407.00	
Bullnose	3.00			3410.00	74.00 Bottom Packers & Anchor

Total Tool Length: 94.00



**TRILOBITE
TESTING, INC.**

DRILL STEM TEST REPORT

FLUID SUMMARY

Charter Energy Inc
 PO Box 252
 Great Bend KS 67530+0252
 ATTN: Wyatt Urban

1-20s-14w Barton,KS
Trump #2
 Job Ticket: 65809 **DST#: 3**
 Test Start: 2019.08.30 @ 10:56:00

Mud and Cushion Information

Mud Type: Gel Chem	Cushion Type:	Oil API:	deg API
Mud Weight: 9.00 lb/gal	Cushion Length: ft	Water Salinity:	28000 ppm
Viscosity: 48.00 sec/qt	Cushion Volume: bbl		
Water Loss: 8.38 in ³	Gas Cushion Type:		
Resistivity: ohm.m	Gas Cushion Pressure: psig		
Salinity: 5700.00 ppm			
Filter Cake: 1.00 inches			

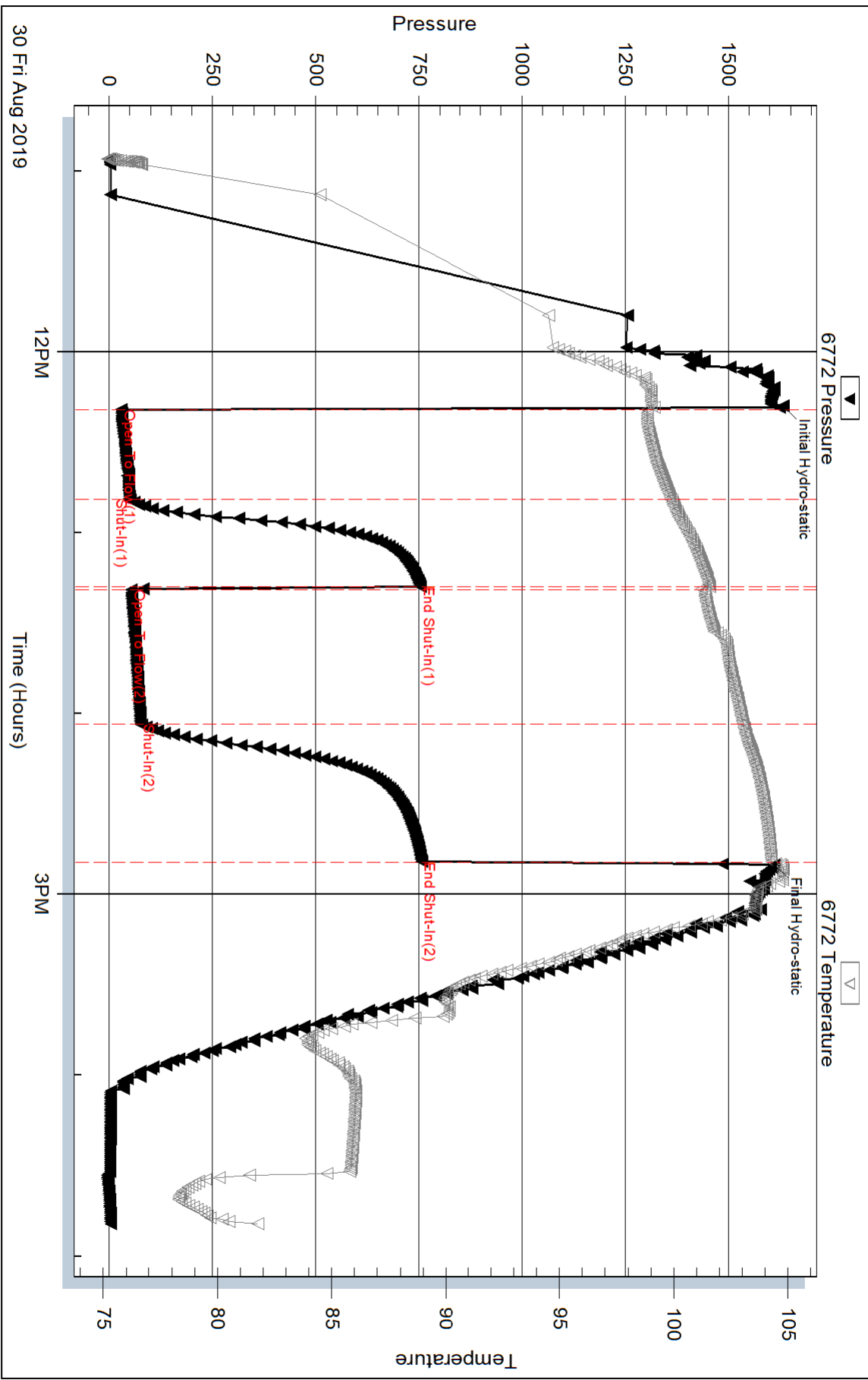
Recovery Information

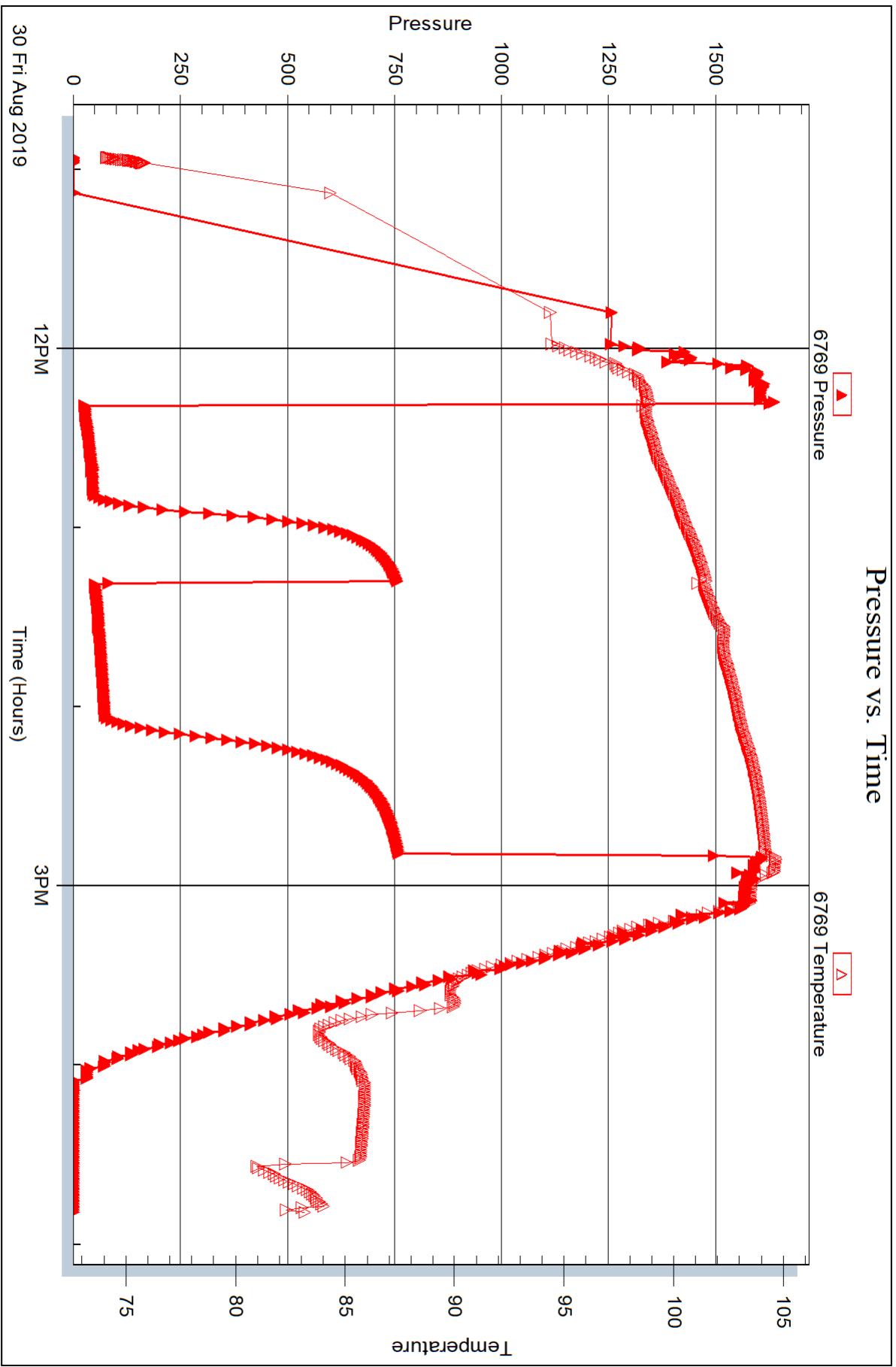
Recovery Table

Length ft	Description	Volume bbl
60.00	O.S.M. 1%O 99%M	0.842
60.00	M.W. 20%M 80%W	0.842

Total Length: 120.00 ft Total Volume: 1.684 bbl
 Num Fluid Samples: 0 Num Gas Bombs: 0 Serial #:
 Laboratory Name: Laboratory Location:
 Recovery Comments:

Pressure vs. Time







DRILL STEM TEST REPORT

Prepared For: **Charter Energy Inc**

PO Box 252
Great Bend KS 67530+0252

ATTN: Wyatt Urban

Trump #2

1-20s-14w Barton,KS

Start Date: 2019.08.31 @ 08:02:00

End Date: 2019.08.31 @ 13:42:00

Job Ticket #: 65810 DST #: 4

Trilobite Testing, Inc
1515 Commerce Parkway Hays, KS 67601
ph: 785-625-4778 fax: 785-625-5620

Printed: 2019.09.06 @ 09:06:18



**TRILOBITE
TESTING, INC.**

DRILL STEM TEST REPORT

Charter Energy Inc
 PO Box 252
 Great Bend KS 67530+0252
 ATTN: Wyatt Urban

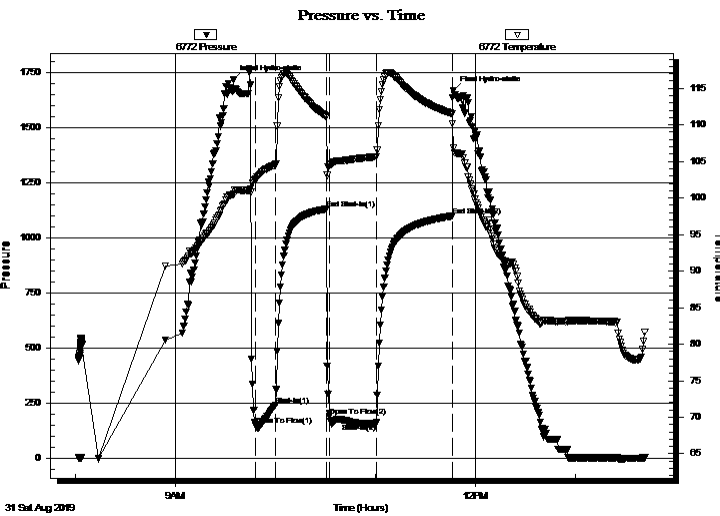
1-20s-14w Barton,KS
Trump #2
 Job Ticket: 65810 **DST#: 4**
 Test Start: 2019.08.31 @ 08:02:00

GENERAL INFORMATION:

Formation: **Arbuckle**
 Deviated: No Whipstock: ft (KB)
 Test Type: Conventional Bottom Hole (Initial)
 Time Tool Opened: 09:48:10
 Tester: Benny Mulligan
 Time Test Ended: 13:42:00
 Unit No: 66
 Interval: **3431.00 ft (KB) To 3530.00 ft (KB) (TVD)**
 Reference Elevations: 1874.00 ft (KB)
 Total Depth: 3530.00 ft (KB) (TVD)
 1869.00 ft (CF)
 Hole Diameter: 7.88 inches
 Hole Condition: Fair
 KB to GR/CF: 5.00 ft

Serial #: 6772 Inside
 Press@RunDepth: 162.57 psig @ 3432.00 ft (KB) Capacity: 8000.00 psig
 Start Date: 2019.08.31 End Date: 2019.08.31 Last Calib.: 2019.08.31
 Start Time: 08:02:01 End Time: 13:42:00 Time On Btm: 2019.08.31 @ 09:34:50
 Time Off Btm: 2019.08.31 @ 11:47:10

TEST COMMENT: IF-15-BOB 20 secs total build of 158 psi
 ISI-30- GTS 1min 28" blow back
 FF-30- BOB 5 secs
 FSI-45- No blow back



PRESSURE SUMMARY

Time (Min.)	Pressure (psig)	Temp (deg F)	Annotation
0	1717.30	100.58	Initial Hydro-static
14	153.86	102.55	Open To Flow (1)
26	241.44	104.49	Shut-In(1)
56	1131.85	111.12	End Shut-In(1)
58	192.73	104.55	Open To Flow (2)
86	162.57	105.65	Shut-In(2)
132	1100.25	111.55	End Shut-In(2)
133	1667.62	106.82	Final Hydro-static

Recovery

Length (ft)	Description	Volume (bbl)
60.00	G.O.S.M. 10%G 90%M	0.84
120.00	V.S.O.C.M. 15%G 5%O 80%M	1.68

Gas Rates

	Choke (inches)	Pressure (psig)	Gas Rate (Mcf/d)
First Gas Rate	0.50	85.00	670.52
Last Gas Rate	0.50	67.00	549.10



**TRILOBITE
TESTING, INC.**

DRILL STEM TEST REPORT

TOOL DIAGRAM

Charter Energy Inc
PO Box 252
Great Bend KS 67530+0252
ATTN: Wyatt Urban

1-20s-14w Barton,KS
Trump #2
Job Ticket: 65810 **DST#: 4**
Test Start: 2019.08.31 @ 08:02:00

Tool Information

Drill Pipe:	Length: 3431.00 ft	Diameter: 3.80 inches	Volume: 48.13 bbl	Tool Weight: 2000.00 lb
Heavy Wt. Pipe:	Length: 0.00 ft	Diameter: 0.00 inches	Volume: 0.00 bbl	Weight set on Packer: 25000.00 lb
Drill Collar:	Length: 0.00 ft	Diameter: 0.00 inches	Volume: 0.00 bbl	Weight to Pull Loose: 68000.00 lb
			<u>Total Volume: 48.13 bbl</u>	Tool Chased 8.00 ft
Drill Pipe Above KB:	20.00 ft			String Weight: Initial 65000.00 lb
Depth to Top Packer:	3431.00 ft			Final 65000.00 lb
Depth to Bottom Packer:	ft			
Interval between Packers:	99.00 ft			
Tool Length:	119.00 ft			
Number of Packers:	2	Diameter: 6.75 inches		

Tool Comments:

Tool Description	Length (ft)	Serial No.	Position	Depth (ft)	Accum. Lengths
-------------------------	--------------------	-------------------	-----------------	-------------------	-----------------------

Change Over Sub	1.00			3412.00	
Shut In Tool	5.00			3417.00	
Hydraulic tool	5.00			3422.00	
Packer	5.00			3427.00	20.00 Bottom Of Top Packer
Packer	4.00			3431.00	
Stubb	1.00			3432.00	
Recorder	0.00	6772	Inside	3432.00	
Recorder	0.00	6769	Outside	3432.00	
Perforations	29.00			3461.00	
Change Over Sub	1.00			3462.00	
Drill Pipe	64.00			3526.00	
Change Over Sub	1.00			3527.00	
Bullnose	3.00			3530.00	99.00 Bottom Packers & Anchor

Total Tool Length: 119.00



**TRILOBITE
TESTING, INC.**

DRILL STEM TEST REPORT

FLUID SUMMARY

Charter Energy Inc
 PO Box 252
 Great Bend KS 67530+0252
 ATTN: Wyatt Urban

1-20s-14w Barton,KS
Trump #2
 Job Ticket: 65810 **DST#: 4**
 Test Start: 2019.08.31 @ 08:02:00

Mud and Cushion Information

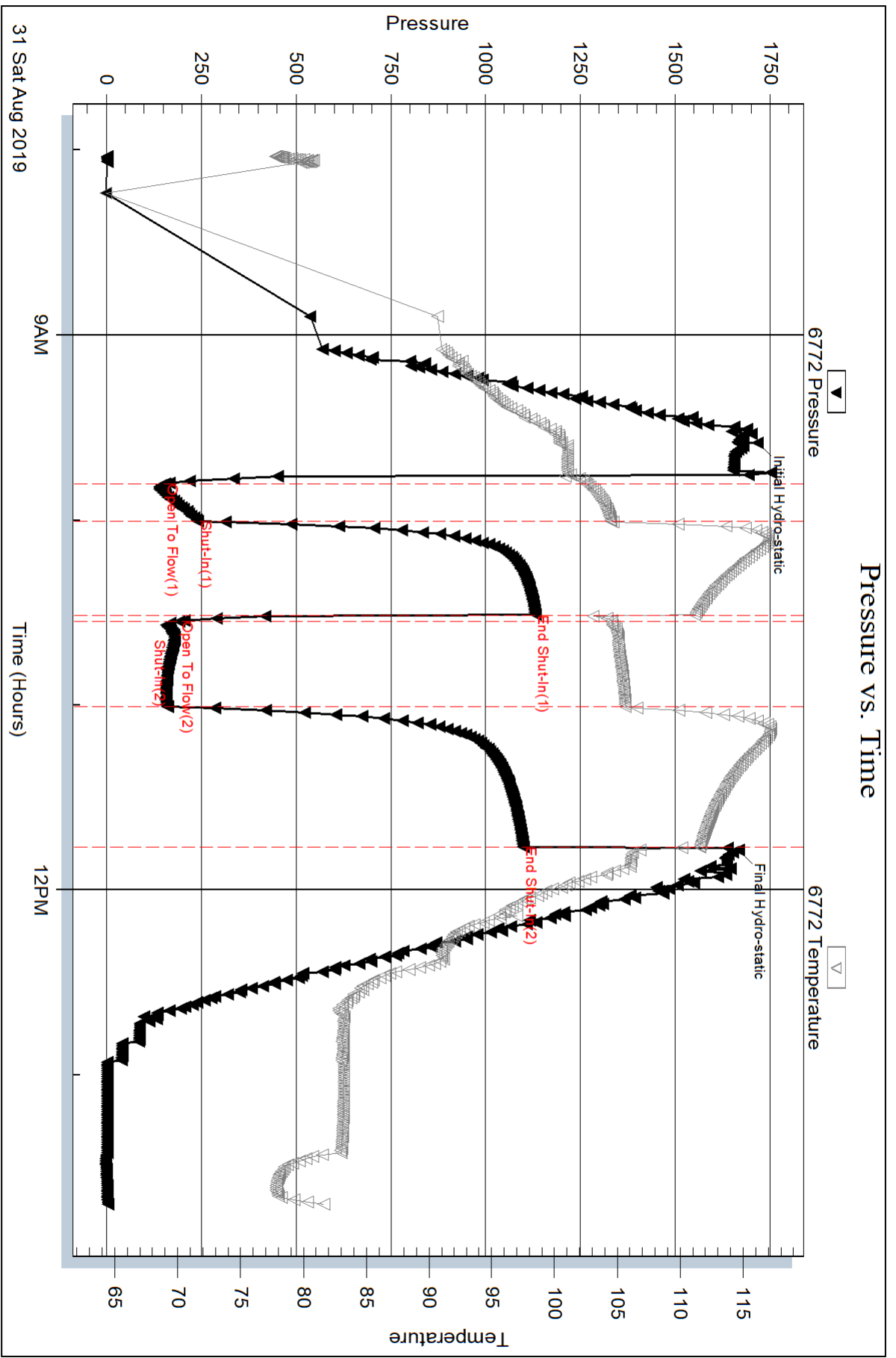
Mud Type: Gel Chem	Cushion Type:	Oil API:	deg API
Mud Weight: 9.00 lb/gal	Cushion Length: ft	Water Salinity:	ppm
Viscosity: 54.00 sec/qt	Cushion Volume: bbl		
Water Loss: 10.48 in ³	Gas Cushion Type:		
Resistivity: ohm.m	Gas Cushion Pressure: psig		
Salinity: 6100.00 ppm			
Filter Cake: inches			

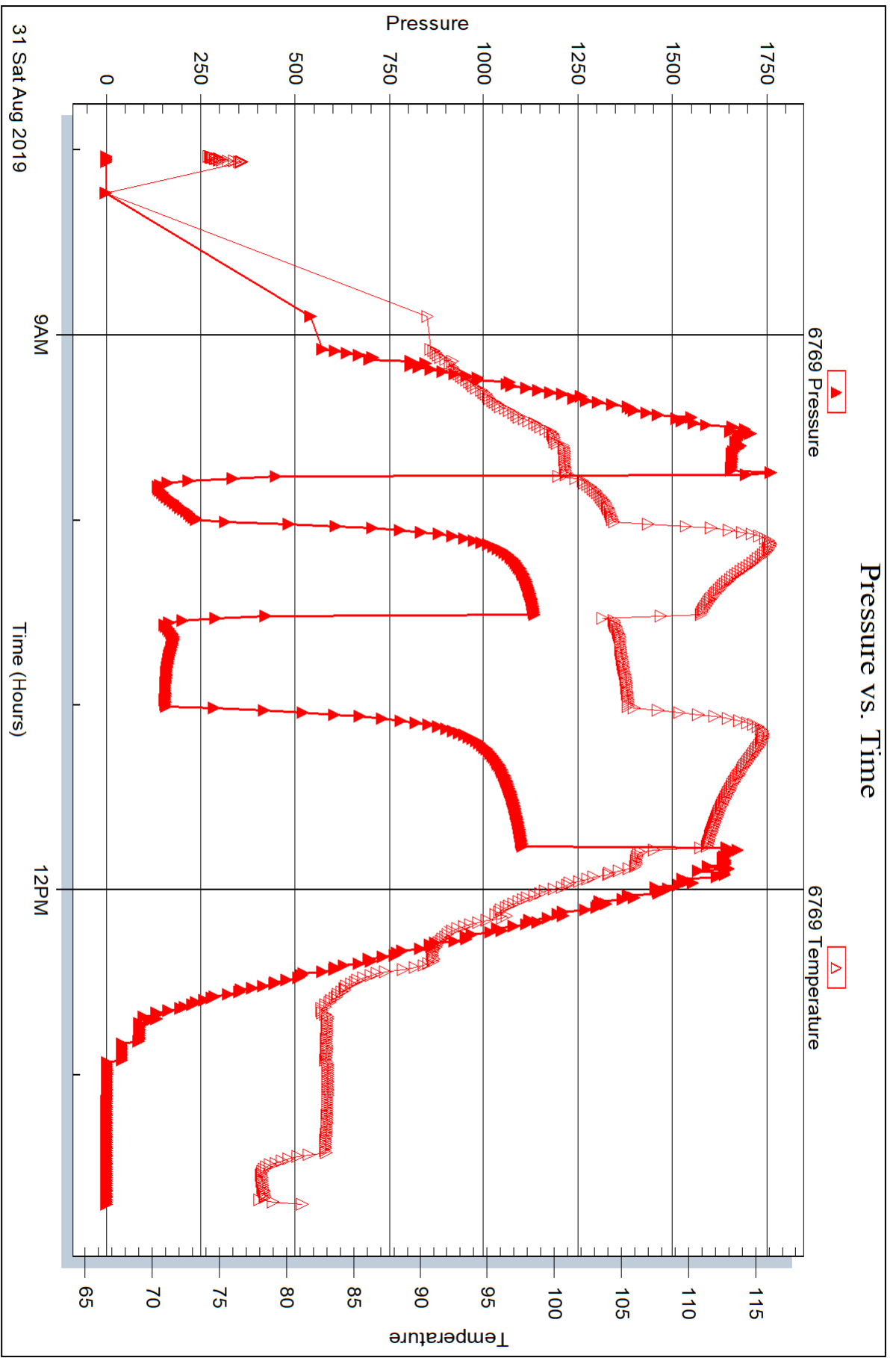
Recovery Information

Recovery Table

Length ft	Description	Volume bbl
60.00	G.O.S.M. 10%G 90%M	0.842
120.00	V.S.O.C.M. 15%G 5%O 80%M	1.683

Total Length: 180.00 ft Total Volume: 2.525 bbl
 Num Fluid Samples: 0 Num Gas Bombs: 0 Serial #:
 Laboratory Name: Laboratory Location:
 Recovery Comments:







DRILL STEM TEST REPORT

Prepared For: **Charter Energy Inc**

PO Box 252
Great Bend KS 67530+0252

ATTN: Wyatt Urban

Trump #2

1-20s-14w Barton,KS

Start Date: 2019.09.01 @ 04:47:00

End Date: 2019.09.01 @ 11:24:09

Job Ticket #: 65811 DST #: 5

Trilobite Testing, Inc
1515 Commerce Parkway Hays, KS 67601
ph: 785-625-4778 fax: 785-625-5620

Printed: 2019.09.06 @ 09:05:40

Charter Energy Inc 1-20s-14w Barton,KS Trump #2 DST # 5 LKC F-G 2019.09.01



**TRILOBITE
TESTING, INC.**

DRILL STEM TEST REPORT

Charter Energy Inc
 PO Box 252
 Great Bend KS 67530+0252
 ATTN: Wyatt Urban

1-20s-14w Barton,KS
Trump #2
 Job Ticket: 65811 **DST#: 5**
 Test Start: 2019.09.01 @ 04:47:00

GENERAL INFORMATION:

Formation: **LKC F-G**
 Deviated: No Whipstock: ft (KB)
 Time Tool Opened: 06:13:50
 Time Test Ended: 11:24:09
 Interval: **3250.00 ft (KB) To 3301.00 ft (KB) (TVD)**
 Total Depth: 3575.00 ft (KB) (TVD)
 Hole Diameter: 7.88 inches Hole Condition: Fair
 Test Type: Conventional Straddle (Initial)
 Tester: Benny Mulligan
 Unit No: 66
 Reference Elevations: 1874.00 ft (KB)
 1869.00 ft (CF)
 KB to GR/CF: 5.00 ft

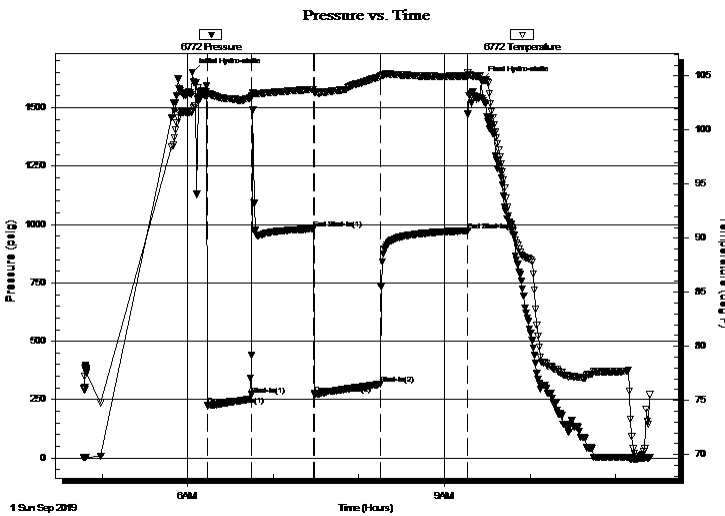
Serial #: 6772

Inside

Press@RunDepth: 314.75 psig @ 3257.00 ft (KB) Capacity: 8000.00 psig
 Start Date: 2019.09.01 End Date: 2019.09.01 Last Calib.: 2019.09.01
 Start Time: 04:47:01 End Time: 11:24:10 Time On Btm: 2019.09.01 @ 06:03:10
 Time Off Btm: 2019.09.01 @ 09:25:40

TEST COMMENT: IF-30- 7" build
 IS-45- no blow back
 FF-45- 10" build
 FS-60- no blow back

PRESSURE SUMMARY



Time (Min.)	Pressure (psig)	Temp (deg F)	Annotation
0	1651.23	101.71	Initial Hydro-static
11	224.27	103.24	Open To Flow (1)
42	270.56	103.05	Shut-In(1)
86	981.24	103.77	End Shut-In(1)
86	273.27	103.52	Open To Flow (2)
132	314.75	104.90	Shut-In(2)
194	972.63	104.98	End Shut-In(2)
203	1617.77	104.65	Final Hydro-static

Recovery

Length (ft)	Description	Volume (bbl)
390.00	MUD 100%M	5.47
120.00	W.M. 30%W 70%M	1.68

Gas Rates

	Choke (inches)	Pressure (psig)	Gas Rate (Mcf/d)



**TRILOBITE
TESTING, INC.**

DRILL STEM TEST REPORT

TOOL DIAGRAM

Charter Energy Inc
PO Box 252
Great Bend KS 67530+0252
ATTN: Wyatt Urban

1-20s-14w Barton,KS
Trump #2
Job Ticket: 65811 **DST#: 5**
Test Start: 2019.09.01 @ 04:47:00

Tool Information

Drill Pipe:	Length: 3243.00 ft	Diameter: 3.80 inches	Volume: 45.49 bbl	Tool Weight:	2000.00 lb
Heavy Wt. Pipe:	Length: 0.00 ft	Diameter: 0.00 inches	Volume: 0.00 bbl	Weight set on Packer:	25000.00 lb
Drill Collar:	Length: 0.00 ft	Diameter: 0.00 inches	Volume: 0.00 bbl	Weight to Pull Loose:	lb
			<u>Total Volume: 45.49 bbl</u>	Tool Chased	ft
Drill Pipe Above KB:	8.00 ft			String Weight: Initial	lb
Depth to Top Packer:	3250.00 ft			Final	lb
Depth to Bottom Packer:	3301.00 ft				
Interval between Packers:	51.00 ft				
Tool Length:	341.00 ft				
Number of Packers:	3	Diameter: 6.75 inches			

Tool Comments:

Tool Description	Length (ft)	Serial No.	Position	Depth (ft)	Accum. Lengths
-------------------------	--------------------	-------------------	-----------------	-------------------	-----------------------

Change Over Sub	1.00			3236.00	
Shut In Tool	5.00			3241.00	
Hydraulic tool	5.00			3246.00	
Packer	4.00			3250.00	15.00 Bottom Of Top Packer
Stubb	1.00			3251.00	
Perforations	5.00			3256.00	
Change Over Sub	1.00			3257.00	
Recorder	0.00	6772	Inside	3257.00	
Recorder	0.00	6769	Outside	3257.00	
Drill Pipe	32.00			3289.00	
Change Over Sub	1.00			3290.00	
Perforations	8.00			3298.00	
Blank Off Sub	1.00			3299.00	
Stubb	2.00			3301.00	
Packer	5.00			3306.00	51.00 Tool Interval
Packer	4.00			3310.00	
Stubb	1.00			3311.00	
Perforations	4.00			3315.00	
Recorder	0.00	9058	Below	3315.00	
Change Over Sub	1.00			3316.00	
Drill Pipe	256.00			3572.00	
Change Over Sub	1.00			3573.00	
Bullnose	3.00			3576.00	275.00 Bottom Packers & Anchor
Total Tool Length:	341.00				



**TRILOBITE
TESTING, INC.**

DRILL STEM TEST REPORT

FLUID SUMMARY

Charter Energy Inc

1-20s-14w Barton,KS

PO Box 252
Great Bend KS 67530+0252

Trump #2

Job Ticket: 65811

DST#: 5

ATTN: Wyatt Urban

Test Start: 2019.09.01 @ 04:47:00

Mud and Cushion Information

Mud Type: Gel Chem

Cushion Type:

Oil API:

deg API

Mud Weight: 9.00 lb/gal

Cushion Length:

ft

Water Salinity:

ppm

Viscosity: 54.00 sec/qt

Cushion Volume:

bbbl

Water Loss: 10.48 in³

Gas Cushion Type:

Resistivity: ohm.m

Gas Cushion Pressure:

psig

Salinity: 6100.00 ppm

Filter Cake: 1.00 inches

Recovery Information

Recovery Table

Length ft	Description	Volume bbl
390.00	MUD 100%M	5.471
120.00	W.M. 30%W 70%M	1.683

Total Length: 510.00 ft

Total Volume: 7.154 bbl

Num Fluid Samples: 0

Num Gas Bombs: 0

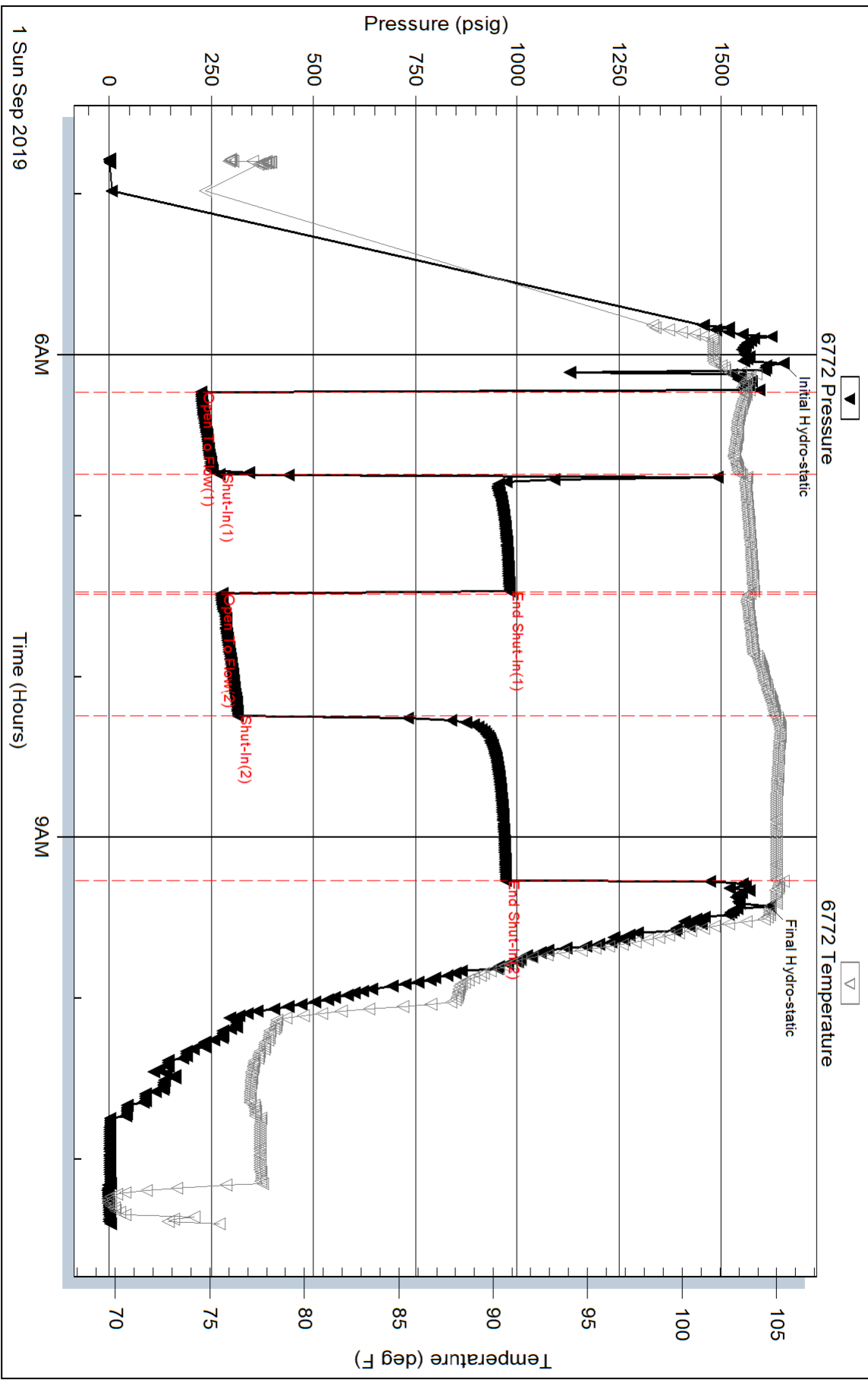
Serial #:

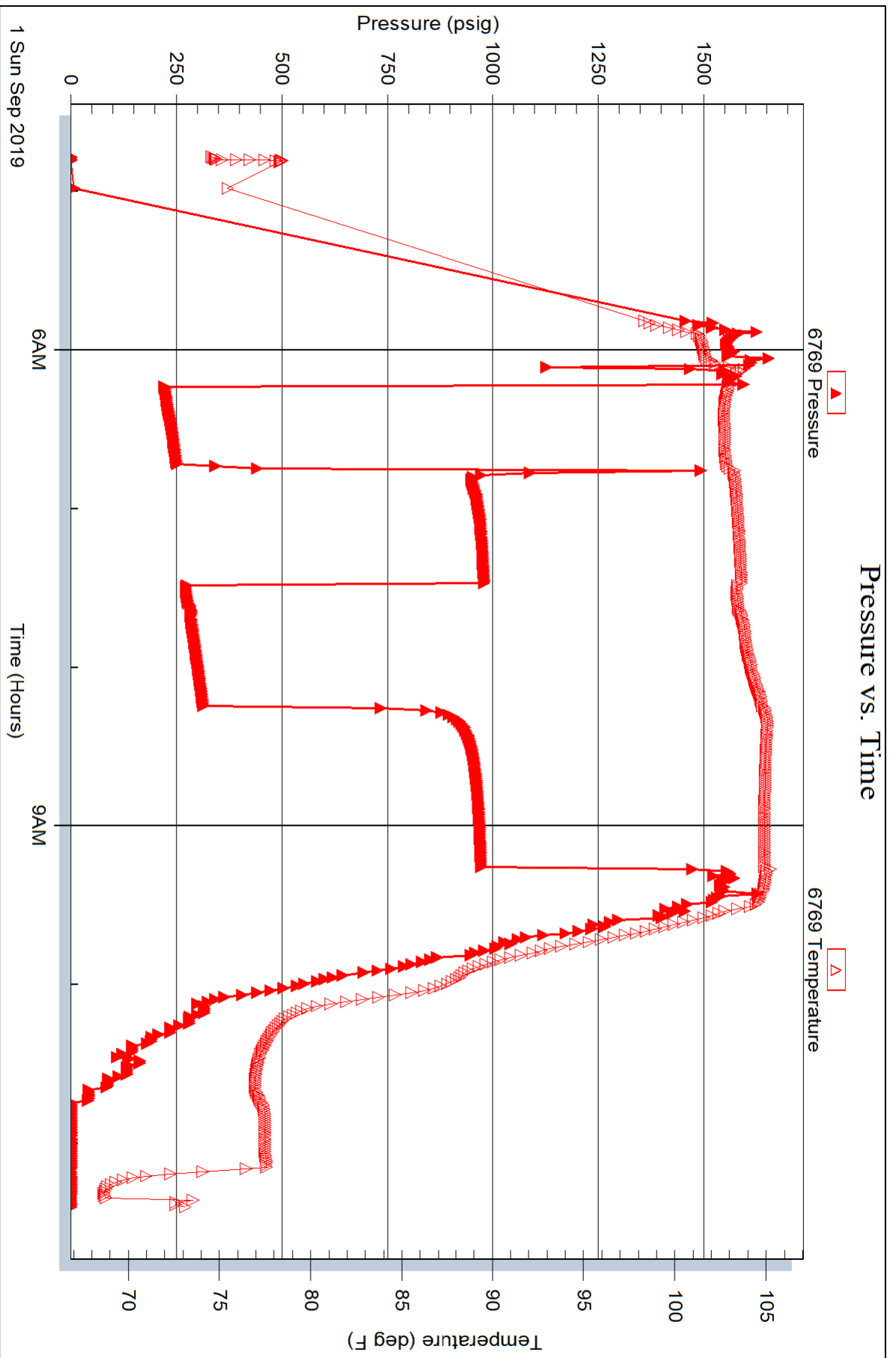
Laboratory Name:

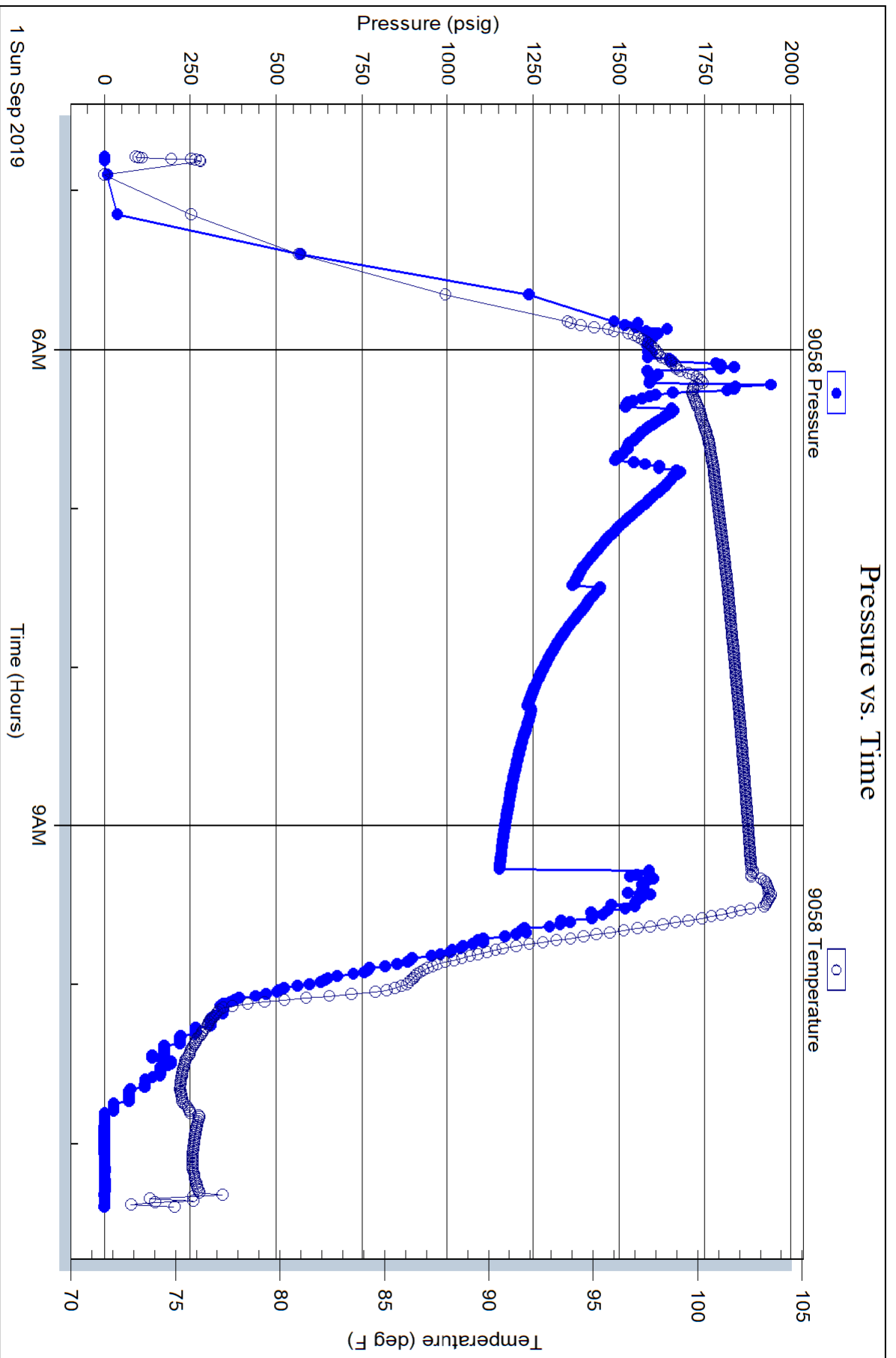
Laboratory Location:

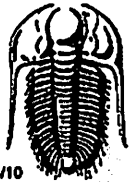
Recovery Comments:

Pressure vs. Time









TRILOBITE TESTING INC.

1515 Commerce Parkway • Hays, Kansas 67601

Test Ticket 65807

NO.

Well Name & No. Trump #2 Test No. 1 Date 8-29-2019
 Company Charter Energy Inc Elevation 1874' KB 1869 GL
 Address PO box 252 Greatbend KS 67530+0252
 Co. Rep / Geo. Wyatt Urban Rig Flex
 Location: Sec. 1 Twp 20S Rge. 14W Co. Barton State KS

Interval Tested 3209-3294 Zone Tested A-F LKC
 Anchor Length 85' Drill Pipe Run 3209 Mud Wt. 9.1
 Top Packer Depth 3204 Drill Collars Run _____ Vis 48
 Bottom Packer Depth 3209 Wt. Pipe Run _____ WL 8.8
 Total Depth 3294 Chlorides 3200 ppm System LCM Tr

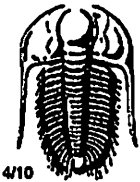
Blow Description IF - total build of 1 1/2"
ISJ - no blow back
FF - was dead flushed to oil and had weak surface blow for 15 mins
FSE - no blow back

Rec	Feet of	%gas	%oil	%water	%mud
<u>40</u>	<u>Mud</u>			<u>100</u>	
Rec	Feet of	%gas	%oil	%water	%mud
Rec	Feet of	%gas	%oil	%water	%mud
Rec	Feet of	%gas	%oil	%water	%mud

Rec Total 40' BHT 103 Gravity _____ API RW _____ @ _____ °F Chlorides _____ ppm

(A) Initial Hydrostatic <u>1547</u>	<input checked="" type="checkbox"/> Test <u>1200</u>	T-On Location <u>7:09 AM</u>
(B) First Initial Flow <u>39</u>	<input type="checkbox"/> Jars _____	T-Started <u>7:57</u>
(C) First Final Flow <u>37</u>	<input type="checkbox"/> Safety Joint _____	T-Open <u>9:26</u>
(D) Initial Shut-In <u>82</u>	<input type="checkbox"/> Circ Sub _____	T-Pulled <u>11:23</u>
(E) Second Initial Flow <u>38</u>	<input type="checkbox"/> Hourly Standby _____	T-Out <u>1:05</u>
(F) Second Final Flow <u>39</u>	<input checked="" type="checkbox"/> Mileage <u>4 mi RT</u>	Comments <u>Ruined packer</u>
(G) Final Shut-In <u>56</u>	<input type="checkbox"/> Sampler _____	
(H) Final Hydrostatic <u>1531</u>	<input type="checkbox"/> Straddle _____	<input type="checkbox"/> EM Tool _____
Initial Open <u>30</u>	<input type="checkbox"/> Shale Packer _____	<input type="checkbox"/> Ruined Shale Packer _____
Initial Shut-In <u>30</u>	<input type="checkbox"/> Extra Packer _____	<input type="checkbox"/> Ruined Packer <u>320</u>
Final Flow <u>30</u>	<input type="checkbox"/> Extra Recorder _____	<input type="checkbox"/> Extra Copies _____
Final Shut-In <u>25</u>	<input type="checkbox"/> Day Standby _____	Sub Total <u>320</u>
	<input type="checkbox"/> Accessibility _____	Total <u>1524</u>
	Sub Total <u>1204</u>	MP/DST Disc't _____

Approved By _____ Our Representative Benny Mulligan
 Trilobite Testing Inc. shall not be liable for damaged of any kind of the property or personnel of the one for whom a test is made, or for any loss suffered or sustained, directly or indirectly, through the use of its equipment, or its statements or opinion concerning the results of any test, tools lost or damaged in the hole shall be paid for at cost by the party for whom the test is made.



TRILOBITE TESTING INC.

1515 Commerce Parkway • Hays, Kansas 67601

Test Ticket 65808

NO.

Well Name & No. Trump #2 Test No. 2 Date 8-29-2019
 Company Charter Energy Inc Elevation 1874 KB 1869 GL
 Address PO BOX 252 Greatbend KS 67530-0252
 Co. Rep / Geo. Wyatt Urban Rig Flex
 Location: Sec. 1 Twp 20s Rge. 14w Co. Barton State KS

Interval Tested 3334-3358 Zone Tested LKC H
 Anchor Length 24' Drill Pipe Run 3330 Mud Wt. 9.1
 Top Packer Depth 3329 Drill Collars Run _____ Vis 48
 Bottom Packer Depth 3334 Wt. Pipe Run _____ WL 8.8
 Total Depth 3358 Chlorides 3200 ppm System LCM Tr
 Blow Description IF - built to 5 1/2" and ~~stopped~~ dropped to 4" towards end of open
FST - no blow back
FF - was dead flushed got weak surface blow
FST - no blow back

Rec	Feet of	%gas	%oil	%water	%mud
<u>60</u>	<u>0.5 m.</u>			<u>100%</u>	<u>mud</u>
Rec	Feet of	%gas	%oil	%water	%mud
Rec	Feet of	%gas	%oil	%water	%mud
Rec	Feet of	%gas	%oil	%water	%mud
Rec	Feet of	%gas	%oil	%water	%mud

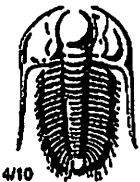
Rec Total 60 BHT 105 Gravity _____ API RW _____ @ _____ °F Chlorides _____ ppm

(A) Initial Hydrostatic 1628 Test 1200 T-On Location 8:15 PM
 (B) First Initial Flow 45 Jars _____ T-Started 8:53
 (C) First Final Flow 44 Safety Joint _____ T-Open 10:47
 (D) Initial Shut-In 583 Circ Sub _____ T-Pulled 1:02 AM
 (E) Second Initial Flow 44 Hourly Standby _____ T-Out 2:35 AM
 (F) Second Final Flow 47 Mileage 4 mi RT Comments _____
 (G) Final Shut-In 264 Sampler _____
 (H) Final Hydrostatic 1596 Straddle _____
 Shale Packer _____
 Extra Packer _____
 Extra Recorder _____
 Day Standby _____
 Accessibility _____

Initial Open 30
 Initial Shut-In 45
 Final Flow 30
 Final Shut-In 30

Sub Total 1204 MP/DST Disc't _____
 Total 1204

Approved By _____ Our Representative Benny Mulligan
 Trilobite Testing Inc. shall not be liable for damaged of any kind of the property or personnel of the one for whom a test is made, or for any loss suffered or sustained, directly or indirectly, through the use of its equipment, or its statements or opinion concerning the results of any test, tools lost or damaged in the hole shall be paid for at cost by the party for whom the test is made.



TRILOBITE TESTING INC.

1515 Commerce Parkway • Hays, Kansas 67601

Test Ticket 65809

NO.

Well Name & No. Trump #2 Test No. 3 Date 8-30-2019
 Company Charter Energy Inc Elevation 1874 KB 1869 GL
 Address PO Box 252 Greatbend KS 67530-0252
 Co. Rep / Geo. Wyatt Urban Rig Flex
 Location: Sec. 1 Twp 20S Rge. 14W Co. Barton State KS

Interval Tested 3336-3410 Zone Tested LKC-14-I
 Anchor Length 74' Drill Pipe Run 3338 Mud Wt. 9.1
 Top Packer Depth 3331 Drill Collars Run _____ Vis 48
 Bottom Packer Depth 3336 Wt. Pipe Run _____ WL 8.4
 Total Depth 3410 Chlorides 5,700 ppm System LCM Tr

Blow Description IF - built to 10 1/2"
EST - no blow back
FF - built to 8"
FSE - no blow back

Rec	Feet of	%gas	%oil	%water	%mud
<u>60</u>	<u>0.5m.</u>		<u>1</u>		<u>99</u>
<u>60</u>	<u>M.W.</u>			<u>80</u>	<u>20</u>
Rec	Feet of	%gas	%oil	%water	%mud
Rec	Feet of	%gas	%oil	%water	%mud

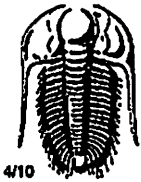
Rec Total 120' BHT 104 Gravity _____ API RW 0.205 @ 82.6°F Chlorides 28,000 ppm

(A) Initial Hydrostatic 1632 Test 1200 T-On Location 10:22 AM
 (B) First Initial Flow 29 Jars _____ T-Started 10:56
 (C) First Final Flow 49 Safety Joint _____ T-Open 12:20 P.M.
 (D) Initial Shut-In 752 Circ Sub _____ T-Pulled 2:50
 (E) Second Initial Flow 54 Hourly Standby _____ T-Out 4:49
 (F) Second Final Flow 76 Mileage 4mi RT Comments _____
 (G) Final Shut-In 756 Sampler _____
 (H) Final Hydrostatic 1611 Straddle _____ EM Tool _____

Initial Open 30 Shale Packer _____ Ruined Shale Packer _____
 Initial Shut-In 30 Extra Packer _____ Ruined Packer _____
 Final Flow 45 Extra Recorder _____ Extra Copies _____
 Final Shut-In 45 Day Standby _____ Sub Total 0
 Sub Total 1204 Accessibility _____ Total 1204
 MP/DST Disc't _____

Approved By _____ Our Representative Benny Mulligan

Triobite Testing Inc. shall not be liable for damaged of any kind of the property or personnel of the one for whom a test is made, or for any loss suffered or sustained, directly or indirectly, through the use of its equipment, or its statements or opinion concerning the results of any test, tools lost or damaged in the hole shall be paid for at cost by the party for whom the test is made.



TRILOBITE TESTING INC.

1515 Commerce Parkway • Hays, Kansas 67601

Test Ticket 65810

NO.

Well Name & No. Trump #2 Test No. 4 Date 8-31-2019
 Company Charter Energy Inc Elevation 1874 KB 1869 GL
 Address PO BOX 252 Great Bend KS 67530+0252
 Co. Rep / Geo. Wyatt Urban Rig Flex
 Location: Sec. 1 Twp 20S Rge. 14W Co. Barton State KS

Interval Tested 3431-3530 Zone Tested Arbuckle
 Anchor Length 99' Drill Pipe Run 3431 Mud Wt. 9.2
 Top Packer Depth 3426 Drill Collars Run _____ Vis 54
 Bottom Packer Depth 3431 Wt. Pipe Run _____ WL 10.5
 Total Depth 3530 Chlorides 6100 ppm System LCM Tr

Blow Description IF - BDB 20 secs total build 158 psi
FST - 28" blow back GTS /min
FF - BDB 5 secs
FST - no blow back

Rec	Feet of	%gas	%oil	%water	%mud
<u>60</u>	<u>G.O.S.M.</u>	<u>10</u>		<u>90</u>	
<u>120</u>	<u>V.S.D.C.M.</u>	<u>15</u>	<u>5</u>	<u>80</u>	
____	____	____	____	____	____
____	____	____	____	____	____
____	____	____	____	____	____

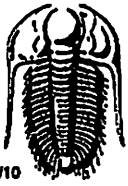
Rec Total 180 BHT 106 Gravity _____ API RW _____ @ _____ °F Chlorides _____ ppm

(A) Initial Hydrostatic 1717 Test 1200 T-On Location 7:20 AM
 (B) First Initial Flow 153 Jars _____ T-Started 8:02
 (C) First Final Flow 241 Safety Joint _____ T-Open 9:46
 (D) Initial Shut-In 1131 Circ Sub _____ T-Pulled 11:46
 (E) Second Initial Flow 192 Hourly Standby _____ T-Out 1:42
 (F) Second Final Flow 162 Mileage 4 mi AT Comments _____
 (G) Final Shut-In 1100 Sampler _____
 (H) Final Hydrostatic 1667 Straddle _____
 Shale Packer _____
 Extra Packer _____
 Extra Recorder _____
 Day Standby _____
 Accessibility _____

Initial Open 15
 Initial Shut-In 30
 Final Flow 30
 Final Shut-In 45

Sub Total 1204 MP/DST Disc't _____
 Total 1204

Approved By _____ Our Representative Benny Mulligan
 Trilobite Testing Inc. shall not be liable for damaged of any kind of the property or personnel of the one for whom a test is made, or for any loss suffered or sustained, directly or indirectly, through the use of its equipment, or its statements or opinion concerning the results of any test, tools lost or damaged in the hole shall be paid for at cost by the party for whom the test is made.



TRILOBITE TESTING INC.

1515 Commerce Parkway • Hays, Kansas 67601

Test Ticket 65811

NO.

Well Name & No. Trump #2 Test No. 5 Date 9-1-2019
 Company Charter Energy Inc Elevation 1874 KB 1869 GL
 Address PO Box 252 Great Bend KS 67530+0252
 Co. Rep / Geo. Wyatt Urban Rig Flex
 Location: Sec. 1 Twp 20s Rge. 14w Co. Barton State KS

Interval Tested 3250-3301 Zone Tested LKC F-6
 Anchor Length 57' Drill Pipe Run 3243 Mud Wt. 9.2
 Top Packer Depth _____ Drill Collars Run _____ Vls 54
 Bottom Packer Depth 3250 Wt. Pipe Run _____ WL 10.5
 Total Depth 3574 Chlorides 6100 ppm System LCM Tr
 Blow Description FF - 7" build
FSI - no blow back
FF - 10" build
FSI - no blow back

Rec	Feet of	%gas	%oil	%water	%mud
<u>390</u>	<u>Mud</u>			<u>100</u>	<u>mud</u>
<u>120</u>	<u>W.M.</u>		<u>30</u>	<u>70</u>	<u>mud</u>
_____	_____	_____	_____	_____	_____
_____	_____	_____	_____	_____	_____
_____	_____	_____	_____	_____	_____

Rec Total 510' BHT 104 Gravity _____ API RW _____ @ _____ °F Chlorides _____ ppm

(A) Initial Hydrostatic 1651 Test 1200 T-On Location 3:15 Am
 (B) First Initial Flow 224 Jars _____ T-Started 4:47
 (C) First Final Flow 270 Safety Joint _____ T-Open 6:15
 (D) Initial Shut-In 981 Circ Sub _____ T-Pulled 9:15
 (E) Second Initial Flow 273 Hourly Standby _____ T-Out 11:24
 (F) Second Final Flow 314 Mileage 4 mi. RT 4 Comments Loaded tools
 (G) Final Shut-In 972 Sampler _____ after DST 5
 (H) Final Hydrostatic 1617 Straddle 600 EM Tool _____
 Shale Packer _____ Ruined Shale Packer _____
 Extra Packer _____ Ruined Packer _____
 Extra Recorder _____ Extra Copies _____
 Initial Open 30 Day Standby _____ Sub Total 0
 Initial Shut-In 45 Accessibility _____ Total 1804
 Final Flow 45 Sub Total 1804 MP/DST Disc't _____
 Final Shut-In 60

Approved By _____ Our Representative Benny Mulligan
 Trilobite Testing Inc. shall not be liable for damaged of any kind of the property or personnel of the one for whom a test is made, or for any loss suffered or sustained, directly or indirectly, through the use of its equipment, or its statements or opinion concerning the results of any test, tools lost or damaged in the hole shall be paid for at cost by the party for whom the test is made.