



Mudgrove

PETROLEUM CORPORATION
Clatlin, Kansas

GEOLOGIST'S REPORT

DRILLING TIME AND SAMPLE LOG

COMPANY Charter Energy

LEASE Trump # 2

FIELD Four

LOCATION SE-SW-NE-SW (1530' FSL & 1730' FWL)

SEC 1 TWSP 20s RGE 14w

COUNTY Barton STATE Kansas

CONTRACTOR Flex Drilling (rig # 1)

SPUD 8/22/2019 COMP 08/31/2019

RTD 3574' LTD 3575'

MUD UP 2900' TYPE MUD Chemical

ELEVATIONS

KB 1874'

DF _____

GL 1869'

Measurements Are All
From KB

CASING

SURFACE 8 5/8" @ 1105'

PRODUCTION None

ELECTRICAL SURVEYS

ELI; CDL/ CNL,
DUCP, MICRO

SAMPLES SAVED FROM _____ 2900' TO _____ RTD

DRILLING TIME KEPT FROM _____ 2900' TO _____ RTD

SAMPLES EXAMINED FROM _____ 2900' TO _____ RTD

GEOLOGICAL SUPERVISION FROM _____ 2930' TO _____ RTD

GEOLOGIST ON WELL Wyatt Urban

FORMATION TOPS	LOG		SAMPLES	
Anhydrite	2470	(-559)		
B. Anhydrite	2479	(-568)		
Heebner	3109	(-1235)	3109	(-1235)
Toronto	3124	(-1250)	3123	(-1249)
Brown Lime	3208	(-1334)	3208	(-1334)
Lansing	3217	(-1343)	3219	(-1345)
Base KC	3444	(-1570)	3444	(-1570)







	1		

Conglomerate	3453	(-1579)	3448	(-1581)	
Arbuckle	3495	(-1621)	3495	(-1621)	
RTD	3575	(-1701)	3575	(-1701)	
LTD	3574	(-1700)	3574	(-1700)	

DRILLSTEM TESTS

No	Interval	Formation
1	0.00	

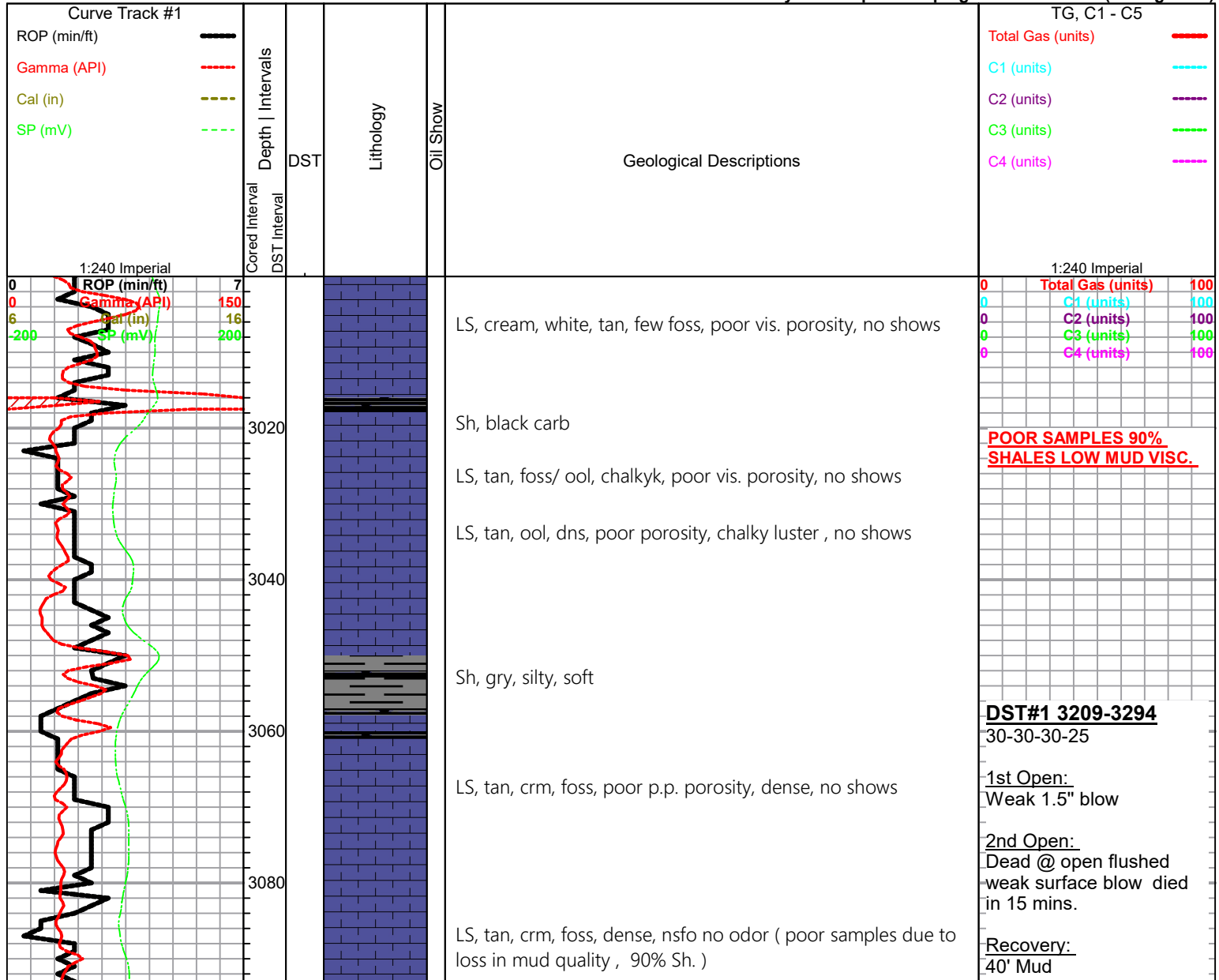
ROCK TYPES

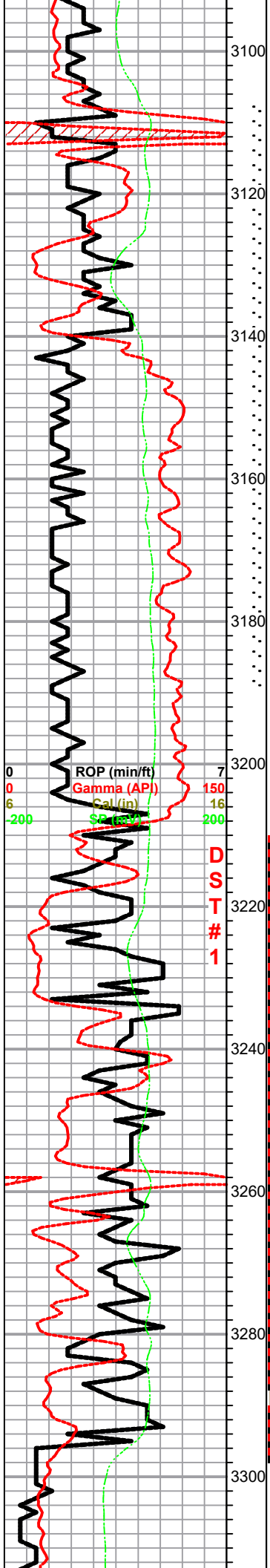
 Dolprim	 shale, grn	 Carbon Sh
 Lmst fw<7	 shale, gry	 shale, red

OTHER SYMBOLS

INTERVALS	Oil Show	DST
■ Core	● Good Show	■ DST Int
· DST	● Fair Show	■ DST alt
	● Poor Show	■ Core
	○ Spotted or Trace	tail pipe
	○ Questionable Stn	
	D Dead Oil Stn	
	■ Fluorescence	
	* Gas	

Printed by GEOstrip VC Striplog version 4.0.8.15 (www.grsi.ca)





HEEBNER 3109.0 -1235.0

Sh, black carb

LS, tan, brn dns, poor vis. porosity, no shows.

Sh, gry, silty soft

Sh, gry, dk gry, tr. ls, tan, fxl, dense

TORONTO 3123.0 -1249.0

LS, cream, tan, few foss, poor vis. por., v. chalky, tr. lt. brn stain, nsfo, no odor

DOUGLAS 3140.0 -1266.0

Sh, gry, silty, soft

Sh, a/a, tr. gry sd., v. f. grain poor porosity, mica,

Sh, gry silty soft

BROWN LIME 3208.0 -13634.0

LS, bn, fxl, dense, cherty, few foss, tr. pyrite inclusions

Sh gry soft, mica,

LANSING 3219.0 -1345.0

LS, cream, white, few foss, poor vis. porosity, v chalky

LS, brn, gran, poor vis. porosity, sl. chalky., lt. brn spty stain, tr. brn spty sfo, no odor

LS, tan, scattered vugy type porosity brn - blk stain, spty sfo, faint odor, vis. gas bubbles.

LS, brn dense cherty, no shows no odor

LS, tan, poor vis. porosity, few p.p. - vuggy type porosity, lt. brn stain, dk brn sat/sfo, fair odor, tr. white, ool cherts

LS, tan, brn, (lg/coarse re-xln qtz clasts) poor scattered porosity, dk brn spty stain, spty sfo, strong odor, (60" min. sample decrease in SFO)

LS, tan, brn, oom, good vuggy porosity, dk brn - blk stain/sat., sfo, good odor (3330' sample cup)

Pressures:
 ISIP 82 psi
 FSIP 56 psi
 IFP 39-37 psi
 FFP 38-39 psi
 HSH 1547-1531 psi
 *Tool Did slide 8'

DST#2 3334-3358

30-45-30-30

1st Open:

weak build to 5.5"

2nd Open:

dead on open flushed,
 weak surface blow

Recovery:

60' O.S.M.

<1% Oil

Pressures:

ISIP 583 psi
 FSIP 264 psi
 IFP 45-44 psi
 FFP 44-47 psi
 HSH 1628-1593 psi

DST#3 3336-3410

30-30-45-45

1st Open:

Fair build to 10.5"

2nd Open:

Built to 8"

Recovery:

60' OSM

(1%O, 99%M)

60' MUDDY WATER

Pressures:

ISIP 752 psi
 ISIP 756 psi
 IFP 29-49 psi
 FFP 54-76 psi
 HSH 1632-1611 psi

3320
3340
3360
3380
3400
3420
3440
3460
3480
3500
3520

RO (min/ft) 7
Gamma (API) 150
6 16
-200 200

LS, tan, good vuggy oom porosity, no shows
LS, tan, brn, foss, ool, dense, dk brn spty stain , wk. sfo, ??? odor
Sh, black carb
LS, a/a., foss, vuggy type porosity, sptty brn stain , sfo, odor , Tr. LS, white dense, fxl, dense, no shows
Slug gry sh.
LS, tan, vuggy oom porosity, dk brn stain, wk sptty sfo, faint odor
Sh, gry, silty
LS, white, gry, foss, ool, scattered p.p. type porosity, chalky, tr. blk- brn stain , sfo, odor
LS, tan, scattered vuggy / oom por. lt. brn stain , good golden brn sfo, odor
LS, tan, cream, few foss/ ool, poor porosity, chalky, tr. blk / gry stain , nsfo, no odor
Slug gry, greenish, aqua greenish sh
LS, cream, tan , foss, chalky, poor porosity, nsfo, no odor
Sh, maroon, green, silty
LS, white, ool, dense, poor vis. porosity, blk stain(flakey dead oil)
Sh, maroon, gry, greenish, tr. white, opaque cherts
LS, white, foss, scattered p.p. porosity, tr. blk stain, tr. flakey / visc. sfo, no odor
Tr. LS, gry, oom, vuggy porosity, v. dense, dk blk heavy stain, tr. sfo, no odor, Abd. sh. maroon, green soft
Sh, gry, maroon, silty, tr. aqua green, dolomitic sh.

BKC 3444.0 -1570.0

ARBUCKLE 3495.0 -1621.0

Dol, white, cream, f- med xln, poor inxln por. lt. brn stain, sptty sfo, strong odor
Dol., tan, gry, gran. poor vis. porosity, dense, tr. brn stain, tr. brn sfo, (Very dense)
Dol, gray tan, suc, med xln, fair inxln porosity blk stain , sfo, strong odor

DST#4 3431-3530
15-30-30-30

1st Open:
BOB 20 sec.
1st shut in:
28" return GTS 1 min.

2nd open:
BOB 5 mins.

2nd Shut In:
return

Recovery :
60' Gassy oil Spotted mud
(10%G, >1%O, 90%M)

120' VSOCM
(15%G, 5%O, 80%M)

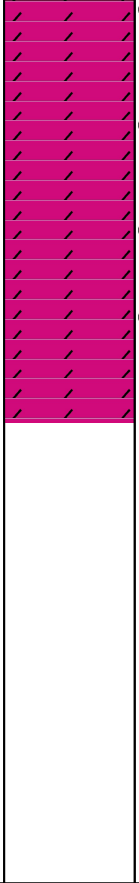
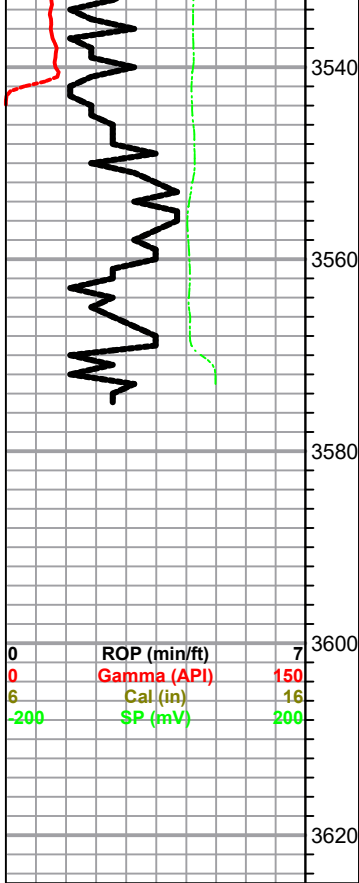
Pressures:
ISIP 1131 psi
FSIP 1100 psi
IFP 153-241 psi
FFP 192-162 psi
HSH 1717-1667 psi

DST# 5 3250-3301
30-45-45-60
STRADDLE TEST

1st Open :
Fair blow built to 7"

2nd Open:
fair blow built to 10"

Recovery:
120' Watery Mud



Dol, tan, fxl, suc. poor inxln porosity, tr. spty brn blk stain, sfo, strong odor, abd. tr white,opaque ool cherts

Dol, tan, fxl, suc, poor inxln porosity, dense, tr. spty blk stain, wk sfo, faint odor

Dol, white, cream, poor inxln porosity, poor blk spty stain, nsfo,

Dol., white, cream, fair inxln porosity, tr. blk stain (flakey) nsfo, no odor, tr. white, gry ool cherts, tr. pyrite

RTD 3575.0 0.0

390' Mud

Pressures

-ISIP 270 psi
 -FSIP 314 psi
 -IFP 224-981 psi
 -FFP 314-972 psi
 -HSH 1651 - 1617 psi

Depth (ft)	Total Gas (units)	C1 (units)	C2 (units)	C3 (units)	C4 (units)
0	100	100	100	100	100
0	100	100	100	100	100
0	100	100	100	100	100
0	100	100	100	100	100
0	100	100	100	100	100