

Fall & Associates

Stake and Elevation Service

P.O. Box 222

Pretty Prairie, KS. 67570

785-243-7506

Date 10-15-19

Invoice Number 0913192

MURFIN DRILLING

1-20

Culwell 'K'

Operator

Number

Farm Name

Cheyenne-KS

20

2s

37w

330'FNL 600'FEL

County-State

S

T

R

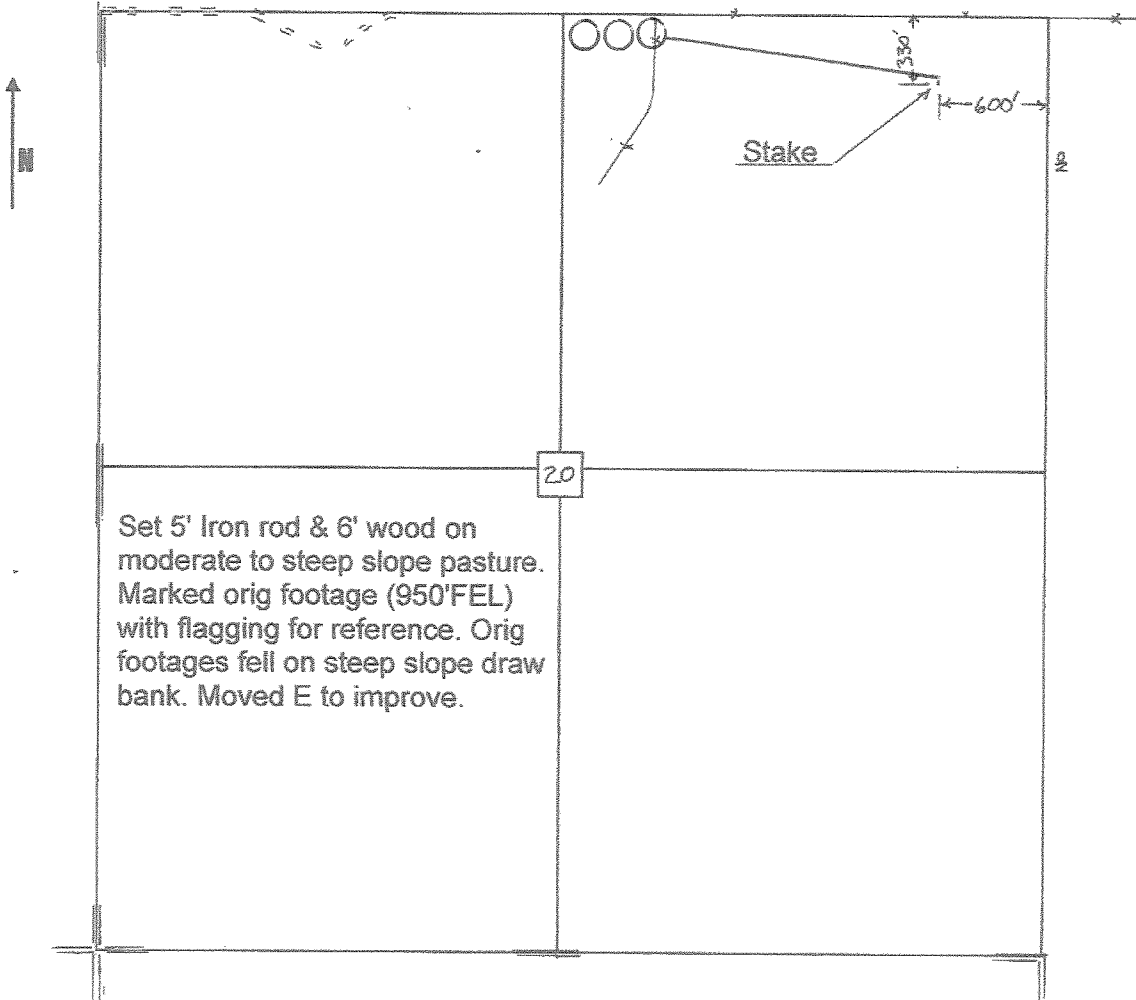
Location

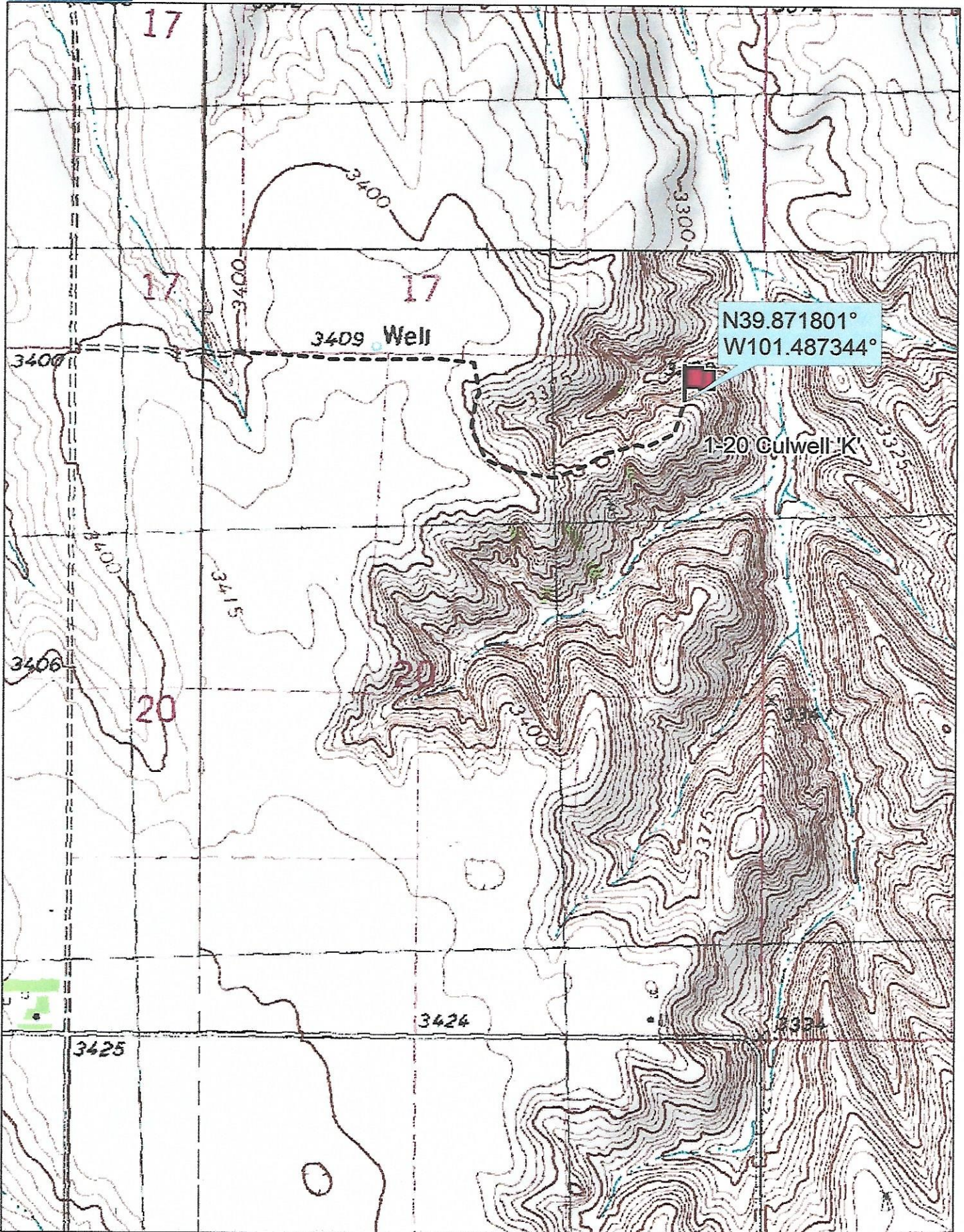
Murfin Drilling
250 N Water
Suite 300
Wichita, KS. 67202

Elevation 3346 Gr.

Ordered By: Shauna

Scale 1"=1000'





N39.871801°
W101.487344°

3409 Well

1-20 Culwell K

20

17

17

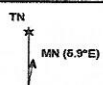
3424

3425

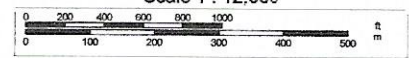
Data use subject to license.

© DeLorme. Topo North America™ 9.

www.delorme.com



Scale 1 : 12,000



1" = 1,000.0 ft Data Zoom 13-1