



Liberal Yard #1717 - Phone 620-624-2277 - 1700 S. Country Estates Road, Liberal KS 67901

PRESSURE PUMPING Job Log

Customer:	LD Drilling Inc	Cement Pump No.:	70897, 19919 5.5Hrs.	Operator TRK No.:	96816
Address:		Ticket #:	1718 19584 L	Bulk TRK No.:	33021, 14284 Kirby
City, State, Zip:		Job Type:	Z41 - Squeeze Perfs		
Service District:	1718 - Liberal, Ks.	Well Type:	OIL		
Well Name and No.:	Ramsey Trust 15B-1	Well Location:	15,19,31	County:	Scott
				State:	Ks

Type of Cmt	Sacks	Additives	Truck Loaded On	
Premium / Common	150	Neat	33021, 14284 Kirby	Front Back
Premium / Common	150	Neat		Front Back
				Front Back

Lead/Tail:	Weight #1 Gal.	Cu/Ft/sk	Water Requirements	CU. FT.	Man Hours / Personnel
Lead:	16.4	1.06	4.31	159	TT Man Hours: 39
Tail:				150	# of Men on Job: 3

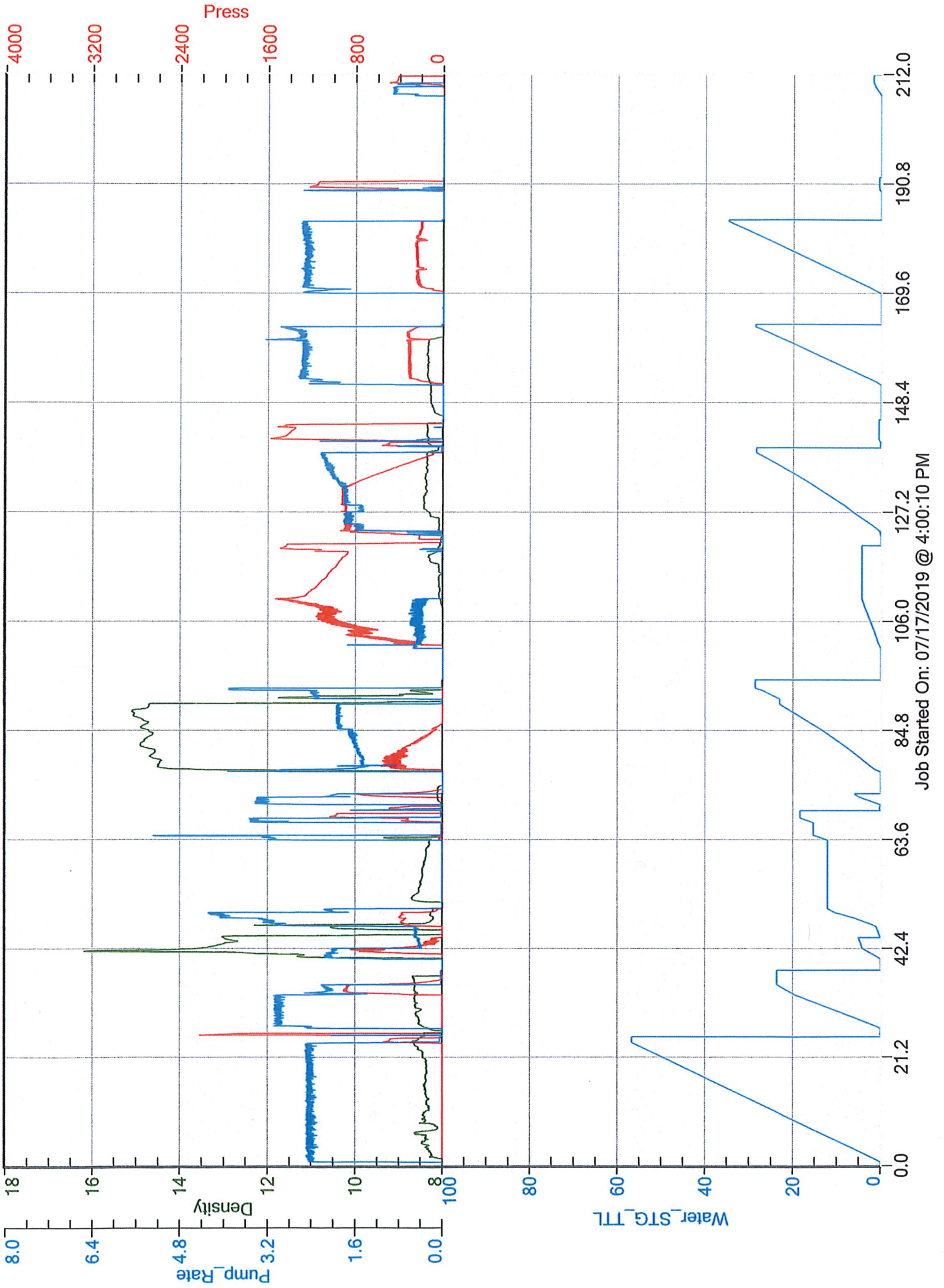
Time (am/pm)	(BPM)	Volume (BBLs)	Pumps		Pressure(PSI)		Description of Operation and Materials
			T	C	Tubing	Casing	
15:00							ON LOCATION & SAFETY MEETING
15:15							RIG UP
4:00 PM		56.5				500	PRESSURE UP BS TO 500PSI
4:26 PM							PRESSURE TEST TO 2200PSI
4:27 PM	2	23				880	GET AN INJECTION RATE / LOADED W/19.5BBL
16:41							PUMP 10SX PLUGGED OFF / REVERSE OUT
17:10						500	LOAD BS TO 500PSI
5:17 PM	1.9	26.4 slurry				440	PUMP 140SX @ 16.4#
17:30							SHUTDOWN / WP
17:35		1 THRU 8					DISPLACE / ON VACUUM 1.25BPM
17:41	0.4	8				350	
	0.4	9				950	
17:51		12				1400	SHUTDOWN / STAGE
18:04							REVERSE OUT W/ 25BBL
18:21		0.25				520	LOAD BS TO 520PSI
18:22		0.5				1550	PRESSURE UP TB TO 1550PSI
18:24							RUN IN W/ TB WASH CASING
19:06							PULL TB
19:29						490	PRESSURE UP TO 490PSI / CLOSE IN
							JOB COMPLETE

Size Hole	Depth	TYPE		Swage	
Size & Wt. Csg. 5 1/2" 15.5#	Depth		New / Used	Packer	4087' Depth
tb. 2 7/8" 6.7#	Depth			Retainer	Depth
Top Plugs	Type			Perfs	4194' -4200' CIBP

Customer Signature: <i>[Signature]</i>	Basic Representative:	Daniel Beck
	Basic Signature:	<i>[Signature]</i>
	Date of Service:	7/17/2019

L&D Drilling

RamseyT15B1



Job Started On: 07/17/2019 @ 4:00:10 PM