

KIM B. SHOEMAKER

CONSULTING GEOLOGIST

316-684-9702 * WICHITA, KS

GEOLOGIST'S REPORT

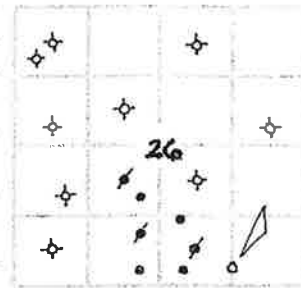
DRILLING TIME AND SAMPLE LOG

CLIENT: L.D. DRILLING, INC.
WELL #: * 3-26 **MINER**
DEPTH: 330' FSL; 1320' FSL, S12 S12 SE
SECTION: 26 17s NE 24W
COUNTY: NESS **STATE:** KANSAS
OPERATOR: L.D. DRILLING, INC.
DATE: 8-12-19 **COMP:** 8-21-19
WELL #: 5030 **WELL #:** 5031
WELL #: 3455 **WELL #:** CHEMICAL
LOG #: 2468
LOG #: 2463
FROM: 2468 KB
LOG #: 351/2 @ 345'
LOG #: 5 1/2' @
LOG #: DUAL IND., DENS-N.

SAMPLED TO: 3700 TO 5030
DRILLING TIME FROM: 3500 TO 5030
DRILLING TIME FROM: 3700 TO 5030
GEOLOGICAL SUPERVISION FROM: 3900 TO 5030

LOGGED BY: Kim B. SHOEMAKER

FORMATION TOPS	LOG	SAMPLES
ANHYDRITE	1764 + 704	1767 + 701
HEEBNER	3855-1387	3856 - 1388
LANSING	3896 - 1428	3900 - 1432
B/KC	4191 - 1723	4191 - 1723
PAWNEE	4312 - 1844	4311 - 1843
FORT SCOTT	4401 - 1933	4401 - 1933
CHEROKEE	4426 - 1958	4426 - 1958
MISSISSIPPI	4519 - 2051	4518 - 2050
VIOLA	4796 - 2328	4796 - 2328
ARBUCKLE	4949 - 2481	4949 - 2481



8-12-19 5RND
 8-13 @ 348'
 8-14 @ 1605'
 8-15 @ 2562'
 8-16 @ 3285'
 8-17 @ 3950'
 8-18 @ 4328'
 8-19 @ 4498'
 8-20 @ 4905'
 8-21 @ 5030'

API: 15-135-26067

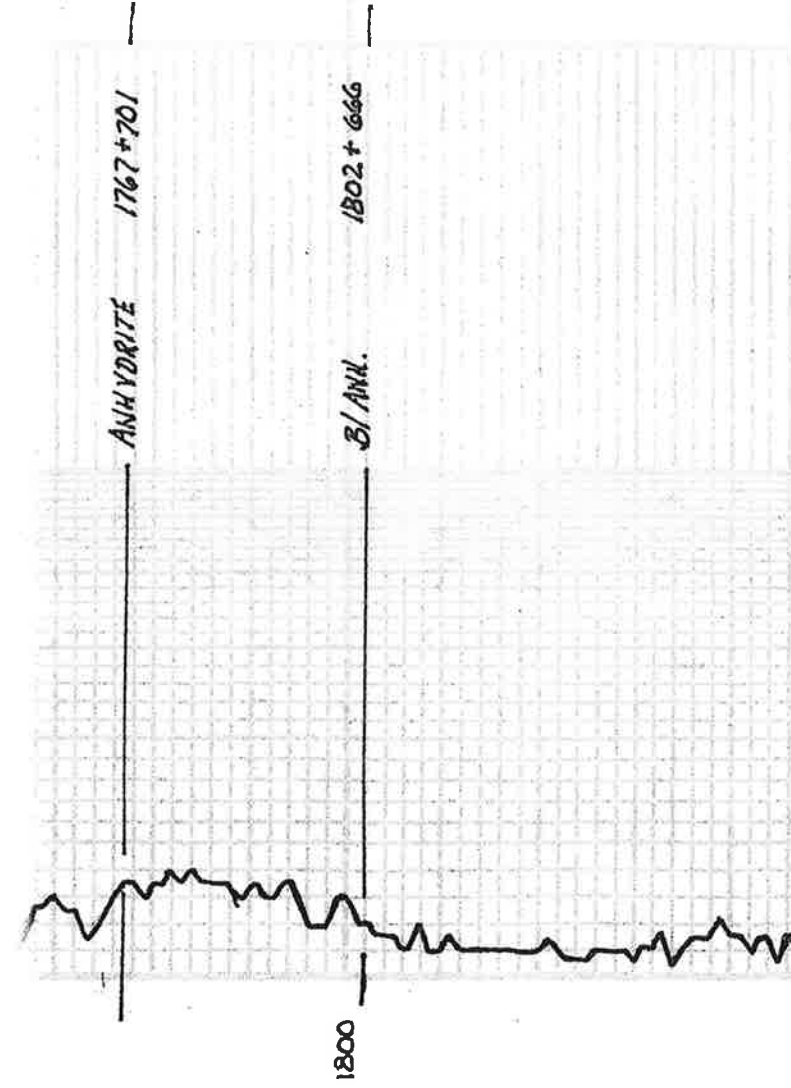
LEGEND



DRILLING TIME IN MINUTES
 0-25 FEET
 from the production formation



LITHOLOGY



1850

3500

3600

3700

Samples are Logged

Sh. BLE

Sh. LIG. G.

ES. wt. foss.

ES. wt. L.S. Foss. Sh. Calcitic

Sh. G.

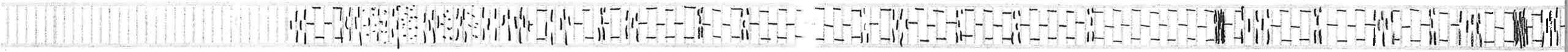
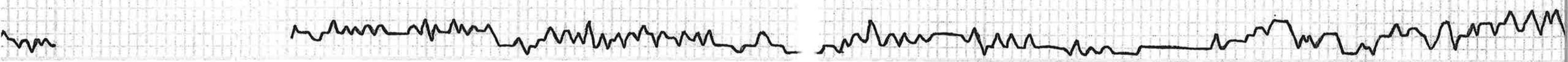
ES. G. Sh. Foss

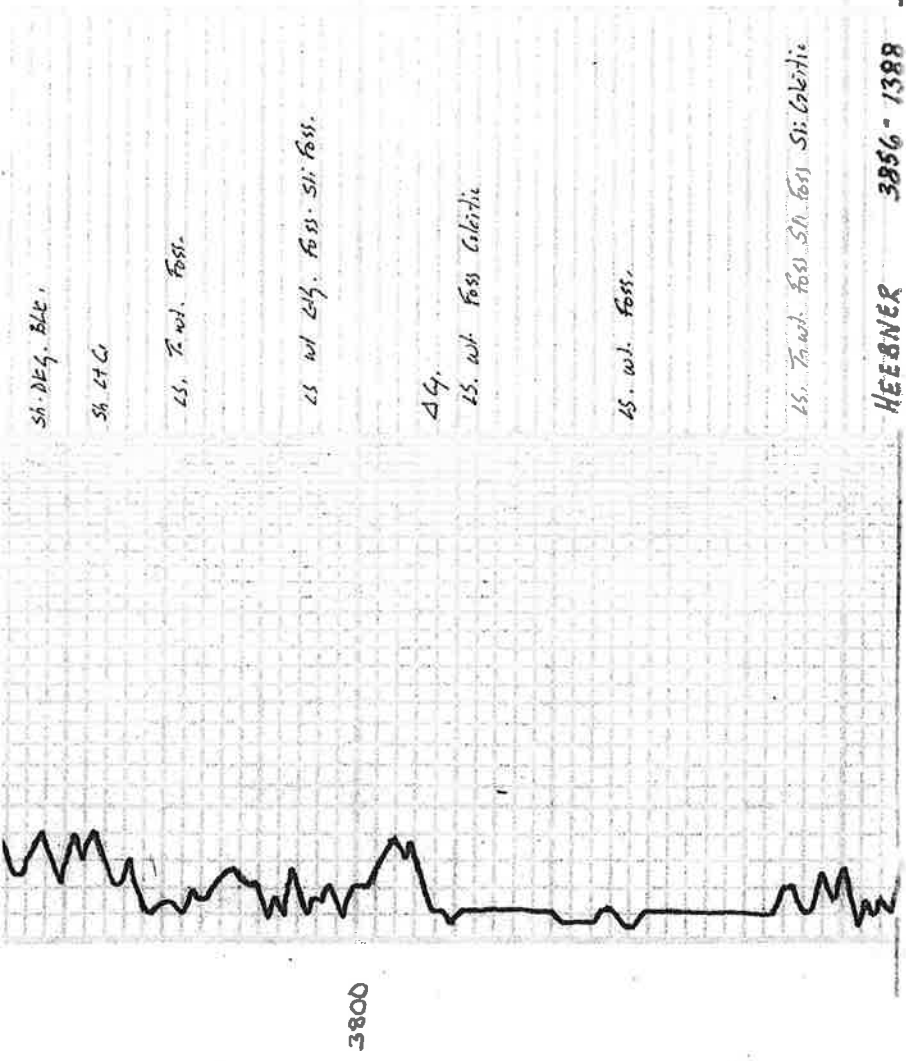
Sh. G.

ES. wt. chly

Sh. DEG. BLE

Sh. LIG.





Sh. DEq. BLE

Sh. LG

LS. T. wt. Foss.

LS. wt. LG. Foss. Si. Foss.

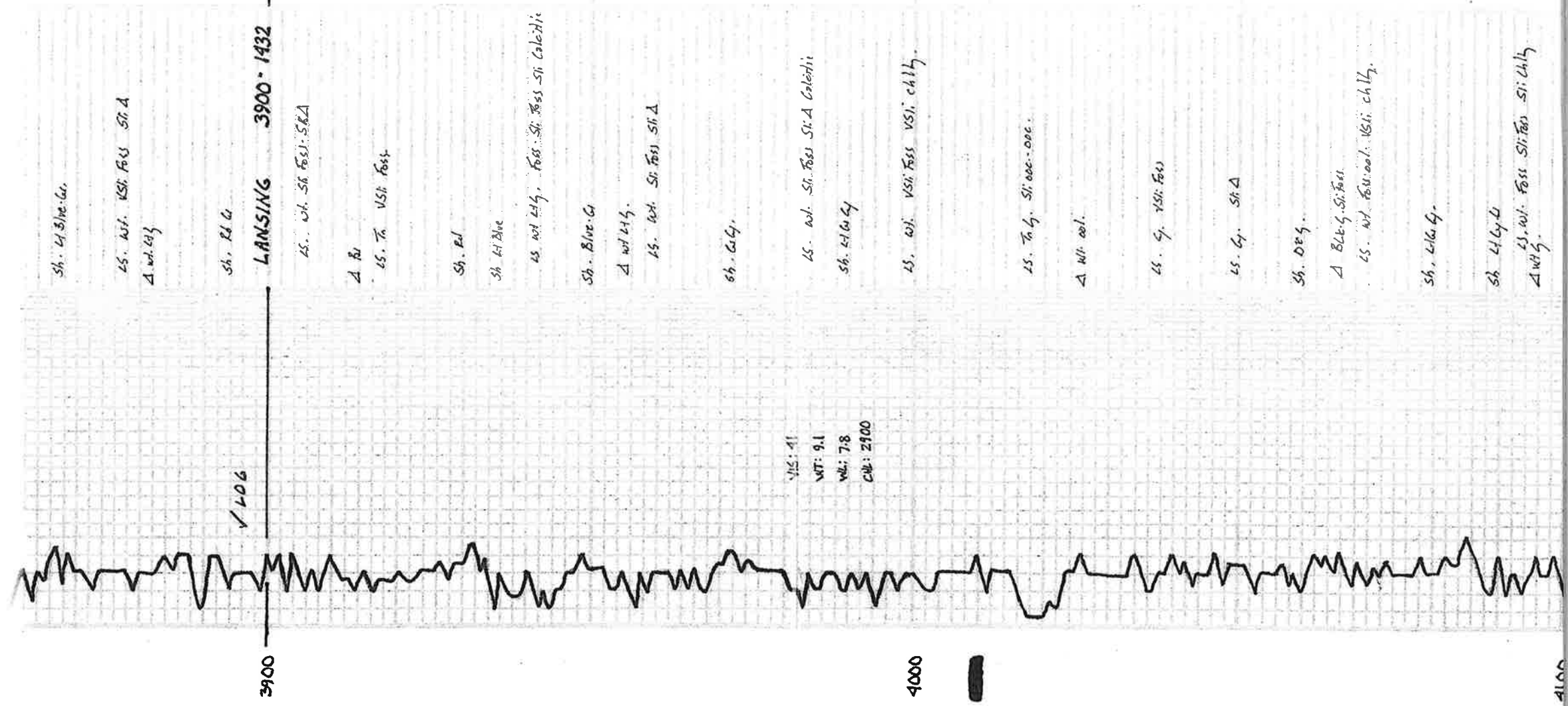
LG.

LS. wt. Foss. Calcitic

LS. wt. Foss.

LS. T. wt. Foss. Si. Foss. Si. Calcitic

HEERNER 3856-1388



Sh. LG. Blue-G.

LS. wt. VSI. Foss. Si. A

LS. wt. LG.

Sh. LG.

LANSING 3900-1432

LS. wt. Si. Foss. SGA

A. R.

LS. T. wt. VSI. Foss.

Sh. BL

Sh. LG. Blue

LS. wt. LG. Foss. Si. Foss. Si. Calcitic

Sh. Blue-G.

LS. wt. LG.

LS. wt. Si. Foss. Si. A

Sh. LG.

VIS: 41

WT: 9.1

WLI: 78

CR: 2100

LS. wt. Si. Foss. Si. A. Calcitic

Sh. LG. G.

LS. wt. VSI. Foss. VSI. chly.

LS. T. wt. Si. Foss. - ooc.

A. wt. ool.

LS. G. VSI. Foss.

LS. G. Si. A

Sh. DEq.

A. Blue-G. Si. Foss.

LS. wt. Foss. ool. VSI. chly.

Sh. LG. G.

Sh. LG. G.

LS. wt. Foss. Si. Foss. Si. chly.

A. wt. G.

4000

45 wt chky MISS GIL CITY
4735-2267

45. To SIA

45. wt To Foss. Calcithi

45. To wt. Sh. Foss. SIA Calcithi

Dol. To. Md. Vln

Dol. ALG. Fossils
Sh. L. Blue

VIOLA sh. L. Blue 4796-2328

Dol. LIG. Fossils

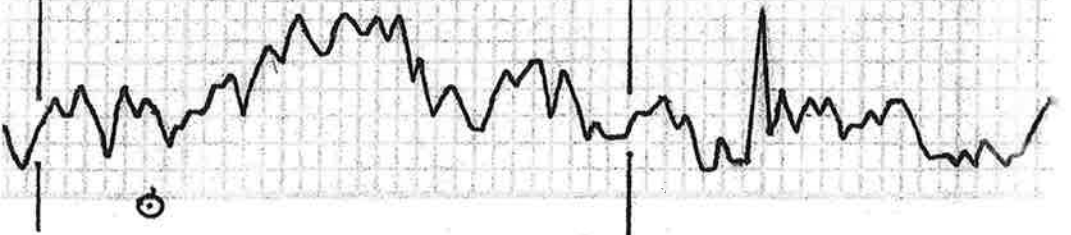
Dol. wt. LIG. Fossils

Dol. G. Fossils Dis.

Δ wt

Short Trip @ 4747

4800



Sh. L. Blue G

Dol. To Fossils

Dol. To G. Fossils

Δ wt LIG.

Dol. To G. Fossils

Δ LIG.

Dol. To wt. Fossils

Dol. G. Dis.

Dol. To G. Md. Vln

Sh. Blue G. S. S. Md. G. Sub R.

ARBUCKLE 4949-2481

Dol. To V. Fossils Slid

Dol. To Fossils

Dol. wt. G. Md. Vln

Dol. To G. R. Md. Vln. SIA

Dol. To wt. Md. G. Vln

Dol. To Pine Md. G. Vln

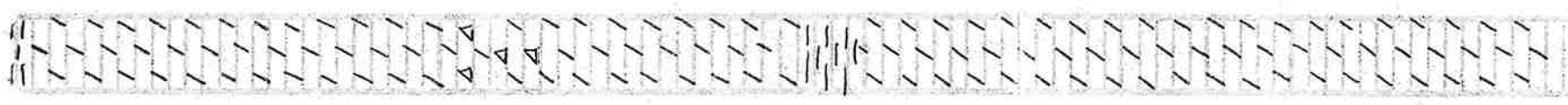
Δ B. coal

Dol. To Md. G. Vln SIA

VIS: 52 WT: 9.2
WL: 8.0 CRU: 2900

RTD 5030-2562

4900



5000