

KIM B. SHOEMAKER
CONSULTING GEOLOGIST
316-684-9709 * WICHITA, KS

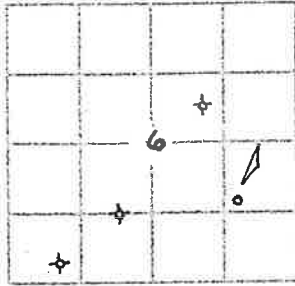
GEOLOGIST'S REPORT
DRILLING TIME AND SAMPLE LOG

COMPANY L. D. DRILLING, INC.
LEASE *1-6 POTTER
FIELD WILDCAT
LOCATION 1495' FSL & 1215' FEL
SEC 6 TWP 18s RGE 24w
COUNTY Ness STATE KANSAS
CONTRACTOR L. D. DRILLING, INC.
SPUD 8-22-19 COMP 8-31-19
RTG 4450 LTD 4452
MUD VP 3430 TYPE MUD CHEMICAL

ELEVATIONS
KE. 2351
DF
EL. 2346
Measurements Are All
From 2351 KB
CASING
SURFACE 8 5/8" @ 330'
PRODUCTION
ELECTRICAL SURVEYS
DUAL IND, DENS-N., MICRO

SAMPLES SAVED FROM 3500 TO 4450
DRILLING TIME KEPT FROM 3500 TO 4450
SAMPLES EXAMINED FROM 3500 TO 4450
GEOLOGICAL SUPERVISION FROM 3700 TO 4450
GEOLOGIST ON WELL Kim B. SHOEMAKER

FORMATION TOPS	LOG	SAMPLES
ANHYDRITE	1623+728	1628+723
B/ANH.	1660+691	1664+687
HEEBNER	3700-1349	3702-1351
LANSING	3744-1393	3746-1395
B/KC	4042-1691	4045-1694
PAWNEE	4171-1820	4167-1816
FORT SCOTT	4249-1898	4247-1896
CHEROKEE	4274-1923	4275-1924
MISSISSIPPI DOL.	4361-2010	4355-2004



API: 15-135-26075

REMARKS

8-22-19 SPUD
8-23 @ 333'
8-24 @ 1665'
8-25 @ 2501'
8-26 @ 3040'
8-27 @ 3555'
8-28 @ 3990'
8-29 @ 4278'
8-30 @ 4370'
8-31 @ 4450'

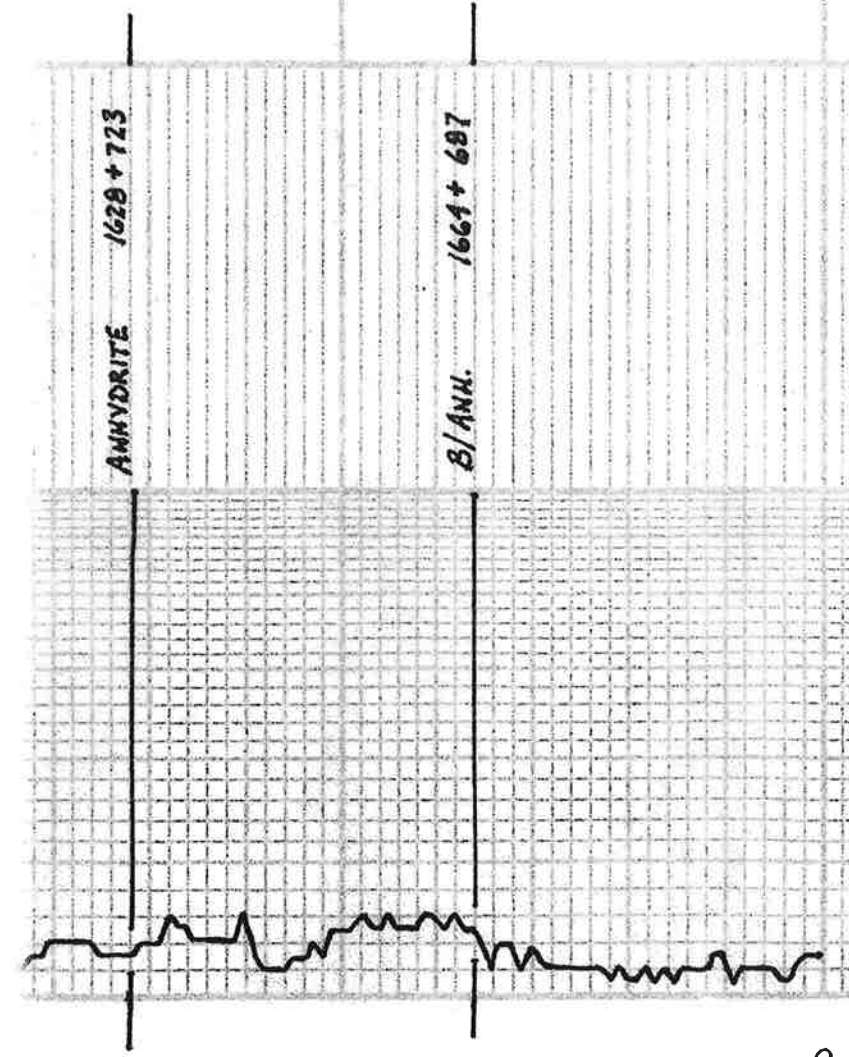
LEGEND

- Anhydrite
- Salt
- Sandstone
- Shale
- Carb. in Limestone
- Oil/Lime Chert
- Dolomite



LITHOLOGY

REMARKS



SD001-11

1700

3500

3600

Samples are logged

Sh. G.
 ls. wt. Sil. Foss. V. Sil. chly.
 Sh. G.
 ls. To Foss.
 ls. To Foss. Sil. Foss.
 Sh. DE G.
 ls. G. V. Sil. A
 ls. To wt.ool. Foss.
 ls. wt. Sil. chly
 ls. G. Sil. Foss.
 Sh. LA G. G.

WT: 8.7 Wt: 6.8
 V/S: 52 CH: 2000



Sh. G.

ls. To Foss. V. Sil. Galactic
 A. G.
 ls. To Foss.
 ls. To G. Sil. Foss.
 ls. To G. Foss.
 ls. To wt.ool. Foss. Sil. Foss. V. Sil. A
 ls. To wt.ool. Foss. Sil. chly.

HEEBNER 3702-1351
 Sh. Blue Carb.

ls. To wt.ool. V. Sil. Foss.
 Sh. LA G. Blue.
 A. G.
 ls. To wt.ool. Sil. Foss. Sil. A
 ls. wt.ool. V. Sil. Foss. V. Sil. A
 Sh. Blue G. Rd

LANSING 3796-1395

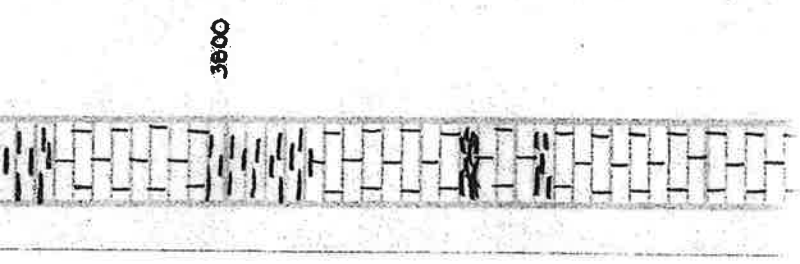
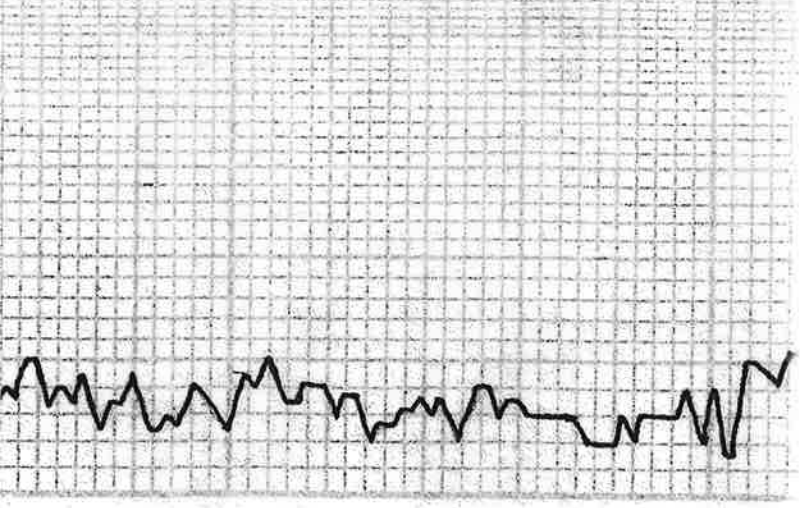
ls. To wt.ool. Sil. Foss. Sil. A
 ls. LA G. V. Sil. Foss. V. Sil. A
 Sh. LA G. Purple, Rd
 ls. To Sil. Foss.

V. 1406

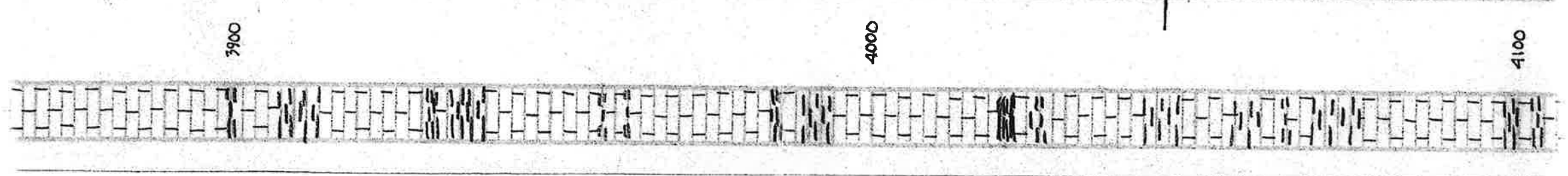
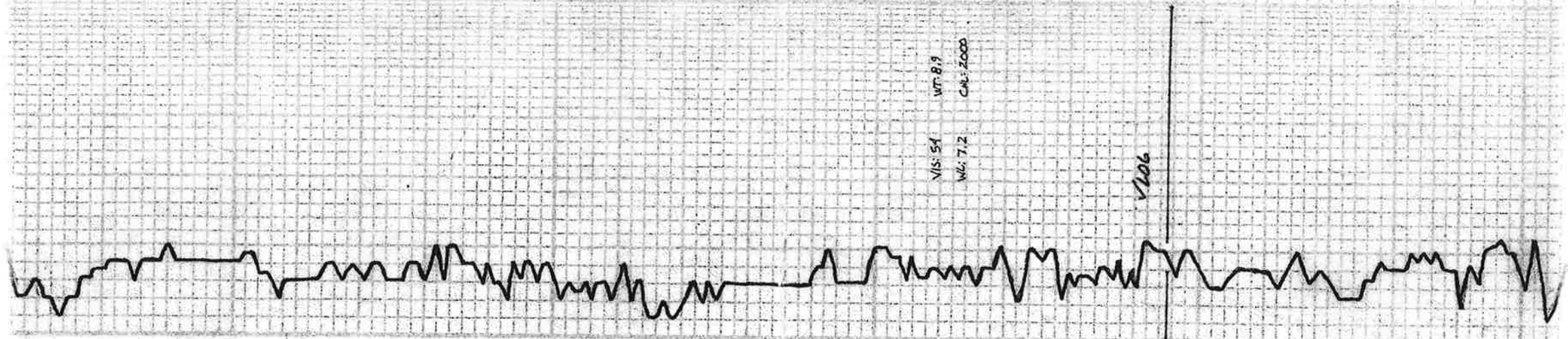
3700



15. To Sl. Foss
 Δ Ltg.
 15. To wit. ool. Sl. Foss.
 Sh. Rd
 15. wt. Sl. Foss. VSi. Δ
 Sh. DEg.
 15. Bu. Li. Bl. VSi. Foss.
 15. wt. Sl. Foss. VSi. Chly.
 15. wt. Sl. Foss. chly.

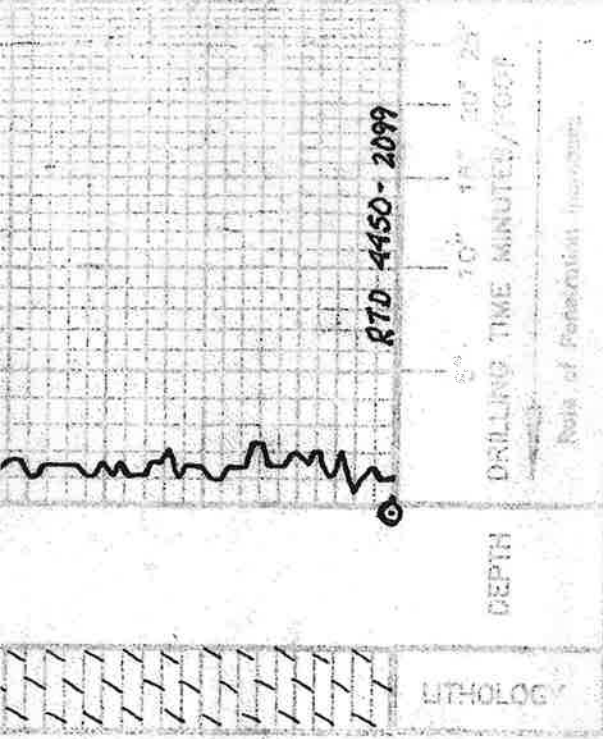


15. To Ltg. Sl. ool. VSi. ool.
 15. wt. chly.
 15. Ltg. VSi. Foss. VSi. Δ
 Sh. Ltg.
 15. Li. Bl. VSi. Foss. Sl. Calcitic
 Δ Ltg.
 15. To wit. Sl. Foss. Sl. Δ
 Sh. Ltg.
 15. Ltg. VSi. Δ
 Sh. DEg.
 Sh. Ltg.
 15. wt. VSi. Foss. VSi. Δ
 Δ Ltg.
 15. To Sl. Foss. Sl. Δ
 Sh. DEg.
 15. To Sl. Foss. VSi. Chly.
 15. To Sl. Δ
 Sh. DEg.
 Sh. Ltg.
 15. G. Sl. Foss.
 Δ Ltg.
 15. wt. Ltg. VSi. Foss. VSi. Δ
 Sh. Bl. Carb.
 15. Bl. G. VSi. Foss.
 15. To Sl. Foss. Sl. chly.
 15. To Sl. Foss. Sl. Δ
 Sh. DEg.
 15. wt. Sl. Foss.
 Sh. Ltg. Slly.
 15. Bu. Sl. Δ
 15. To Sl. Foss. Sl. Δ
 Sh. Rd
 Sh. Rd



LITHOLOGY	DEPTH	DRILLING TIME MINUTES / FOOT <small>Rate of Penetration Inverse</small>	SAMPLE DESCRIPTIONS	REMARKS

RTD 4450-2099



COMPANY L. D. DRILLING, INC. ELEVATION 2351 KB
 LEASE # 1-6 POTER
 LOCATION 195 FSL 4 1215' FEL 6 W 18 R 24W
 COUNTY NESS STATE KANSAS