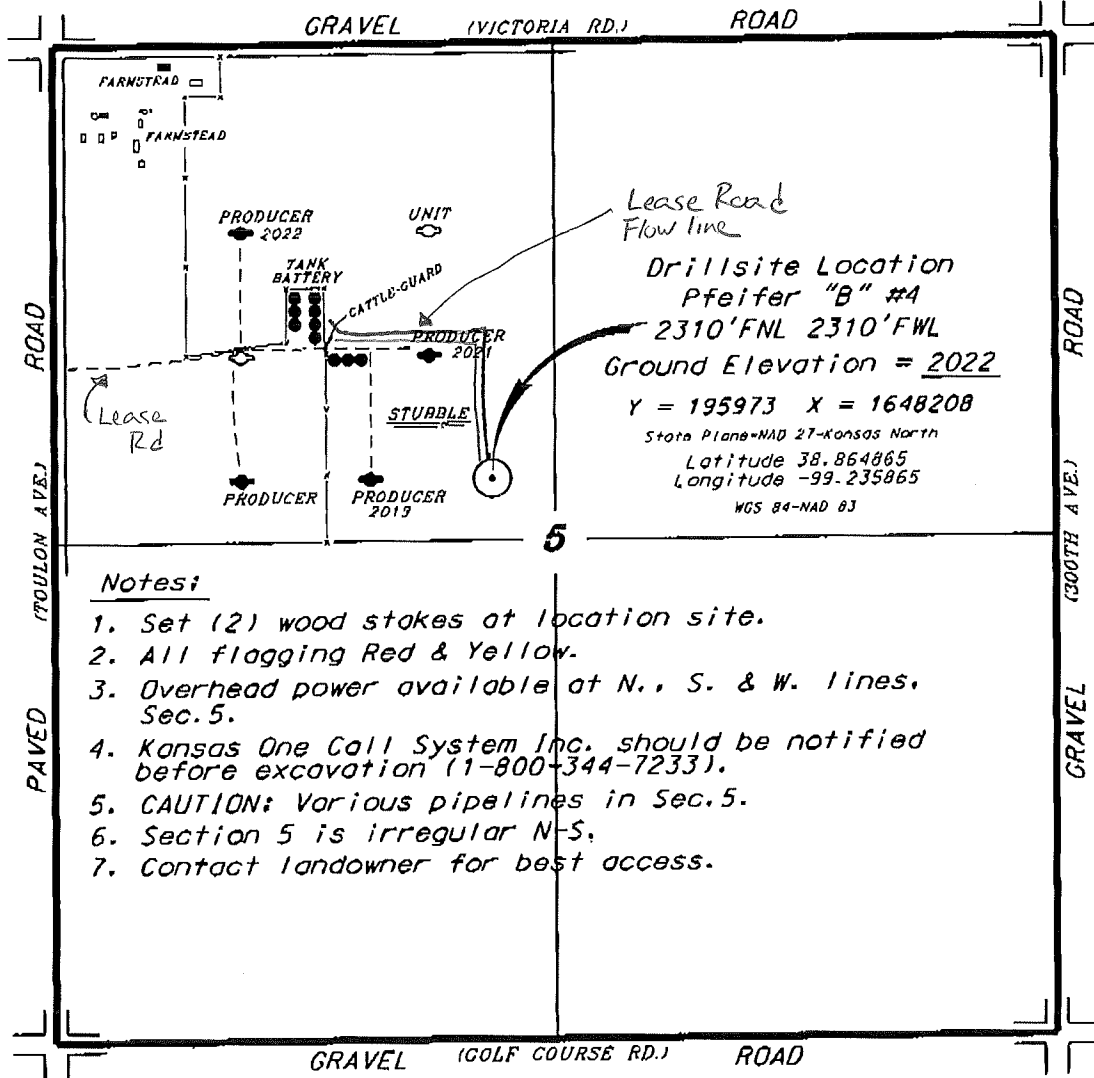
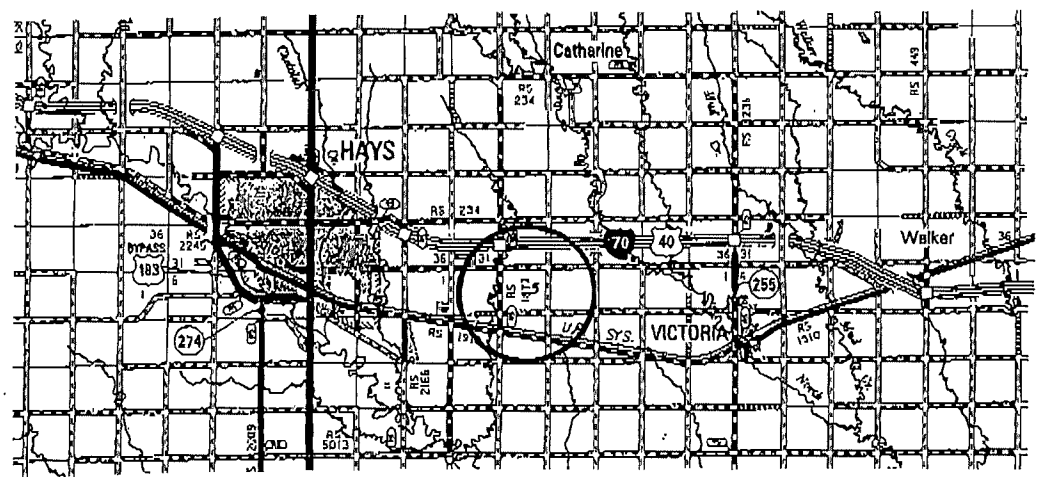
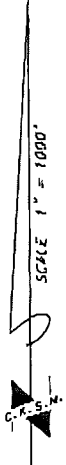


6207922873
BERKACO, LLC
PFEIFER LEASE
NW. 1/4, SECTION 5, T14S, R17W
ELLIS COUNTY, KANSAS



*Ingress and egress to location as shown on this plot is per usage only and may not be legally opened for public use. Contact landowner, tenant and county road department for access.



- Controlling data is based upon the best maps and photographs available to us and upon a regular section of land containing 640 acres.
- Approximate section lines were determined using the normal standards of care of all field surveyors practicing in the state of Kansas. The section corners, which establish the precise section lines, were not necessarily located, and the exact location of the drillsite location in the section is not guaranteed. Therefore, the operator using this service and accepting this plot and all other parties relying thereon agree to hold Central Kansas Drilling Services, Inc., its officers and employees harmless from all losses, costs and expenses and said entities released from any liability from incidental or consequential damages.
- Elevations derived from National Geodetic Vertical Datum.

Date November 25, 2019