

KANSAS CORPORATION COMMISSION
OIL & GAS CONSERVATION DIVISION

TEMPORARY ABANDONMENT WELL APPLICATION

OPERATOR: License#
Name:
Address 1:
Address 2:
City: State: Zip:
Contact Person:
Phone:
Contact Person Email:
Field Contact Person:
Field Contact Person Phone:

API No. 15-
Spot Description:
Sec. Twp. S. R.
GPS Location: Lat: Long:
Datum:
County: Elevation:
Lease Name: Well #:
Well Type:
Spud Date: Date Shut-In:

Table with 7 columns: Conductor, Surface, Production, Intermediate, Liner, Tubing. Rows include Size, Setting Depth, Amount of Cement, Top of Cement, Bottom of Cement.

Casing Fluid Level from Surface: How Determined? Date:
Casing Squeeze(s): to w / sacks of cement, to w / sacks of cement. Date:
Do you have a valid Oil & Gas Lease?
Depth and Type: Junk in Hole at Tools in Hole at Casing Leaks:
Type Completion: ALT. I ALT. II Depth of: DV Tool: Port Collar:
Packer Type: Size: Inch Set at: Feet
Total Depth: Plug Back Depth: Plug Back Method:

Geological Date:

Table with 2 columns: Formation Name, Completion Information. Rows 1 and 2 for formation details.

UNDER PENALTY OF PERJURY I HEREBY ATTEST THAT THE INFORMATION CONTAINED HEREIN IS TRUE AND CORRECT TO THE BEST OF MY KNOWLEDGE

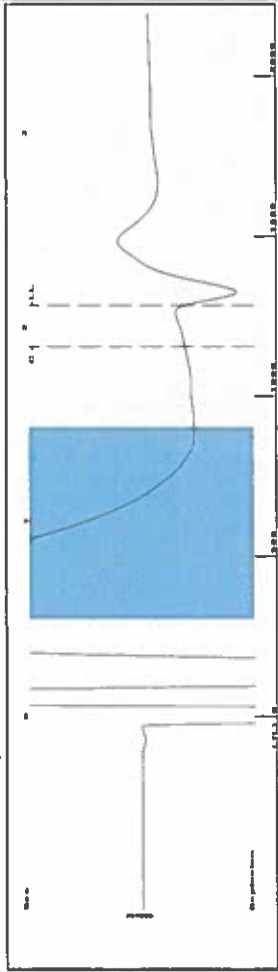
Submitted Electronically

Do NOT Write in This Space - KCC USE ONLY
Date Tested: Results: Date Plugged: Date Repaired: Date Put Back in Service:
Review Completed by: Comments:
TA Approved: Yes Denied Date:

Mail to the Appropriate KCC Conservation Office:

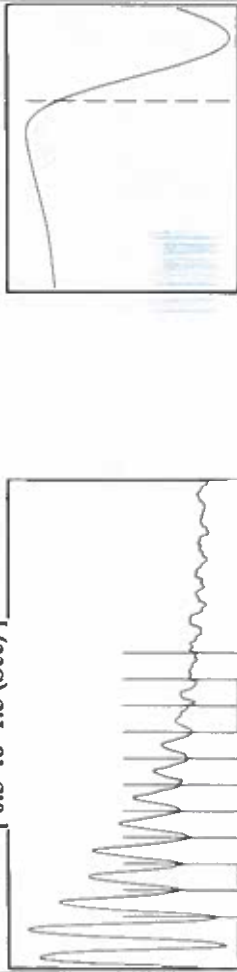
Table with 2 columns: Office Address, Phone. Rows for KCC District Office #1, #2, #3, and #4.

Group: SUBLETTE Well: Jones C-3 (acquired on: 11/24/19 07:27:41)



Filter Type High Pass Automatic Collar Count Yes  
 Manual Acoustic Velo 174.07 ft/s Manual JTS/sec 18.5185  
 Time 2.115 sec  
 Joints 40.4722 Jts  
 Depth 1282.97 ft

1.05 to 1.5 (Sec)

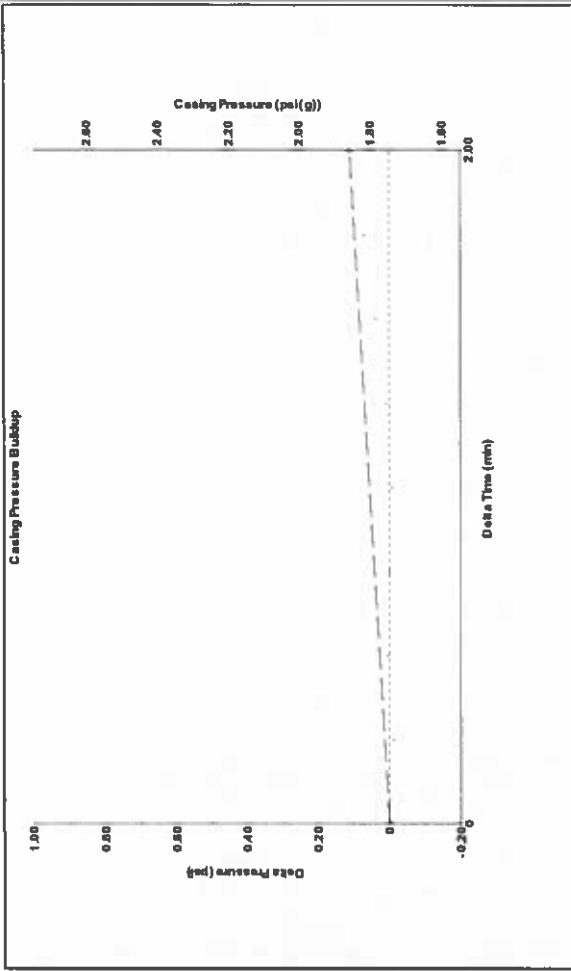


Analysis Method: Automatic

Group: SUBLETTE Well: Jones C-3 (acquired on: 11/24/19 07:27:41)

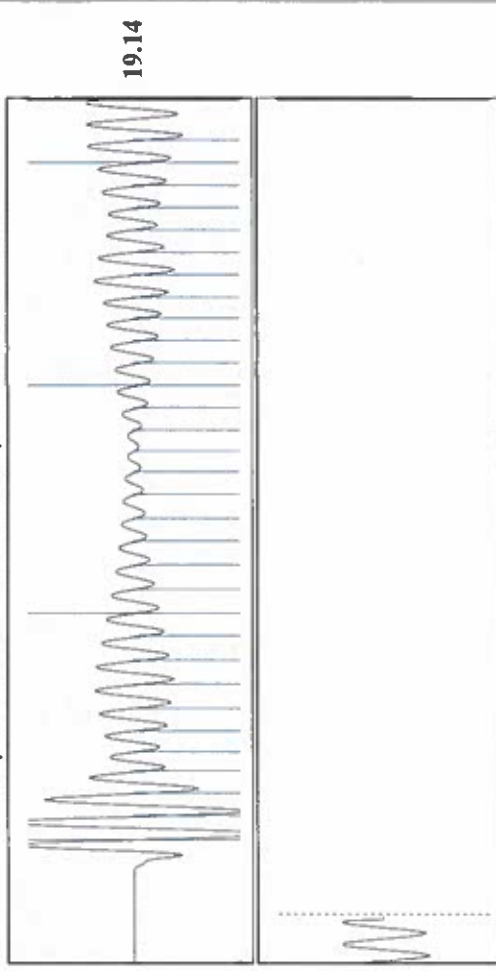
Production	Potential	Casing Pressure	Producing
Oil -*- BBL/D	1.7 psi (g)	0 Mscf/D	Annular Gas Flow
Water -*- BBL/D	Casing Pressure Buildup	0 Mscf/D	% Liquid
Gas -*- Mscf/D	0.1 psi	99 %	
IPR Method Vogel	2.00 min		
PBHP/SBHP	Gas/Liquid Interface Pressure		
Production Efficiency 0.0	2.3 psi (g)		
Oil 40 deg API	Liquid Level Depth		
Water 1.05 Sp.Gr.H2O	1282.97 ft		
Gas 0.77 Sp.Gr.AIR	Pump Intake Depth		
Acoustic Velocity 1213.21 ft/s	2991.00 ft		
	Formation Depth		
	2973.00 ft		
Formation Submergence			
Total Gaseous Liquid Column HT (TVD)	1708 ft		
Equivalent Gas Free Liquid HT (TVD)	1689 ft		
11/24/2019			

Group: SUBLETTE Well: Jones C-3 (acquired on: 11/24/19 07:27:41)



Change in Pressure 0.11 psi  
 Change in Time 2.00 min  
 PT14679 Range  
 0 - ? psi

Group: SUBLETTE Well: Jones C-3 (acquired on: 11/24/19 07:27:41)



Acoustic Velocity 1213.21 ft/s  
 Joints Per Second 19.1358 jts/sec  
 Depth to liquid level 1282.97 ft  
 Automatic Collar Count Yes  
 Joints counted 31  
 Joints to liquid level 40.4722  
 Filler Width 16.5185  
 Time to 1st Collar 0.284  
 20.5185  
 1.904

December 03, 2019

Katherine McClurkan  
Merit Energy Company, LLC  
13727 Noel Road, Suite 1200  
Dallas, TX 75240

Re: Temporary Abandonment  
API 15-081-21449-00-00  
Jones C 3  
NW/4 Sec.03-28S-34W  
Haskell County, Kansas

Dear Katherine McClurkan:

"Your temporary abandonment (TA) application for the well listed above has been approved. In accordance with K.A.R. 82-3-111 the TA status of this well will expire 12/03/2020.

- \* If you return this well to service or plug it, please notify the District Office.
- \* If you sell this well you are required to file a Transfer of Operator form, T-1.
- \* If the well will remain temporarily abandoned, you must submit a new TA application, CP-111, before 12/03/2020.

You may contact me at the number above if you have questions.

Very truly yours,

Michael Maier"