

KANSAS CORPORATION COMMISSION
OIL & GAS CONSERVATION DIVISION

Form must be Typed
Form must be signed

TEMPORARY ABANDONMENT WELL APPLICATION

All blanks must be complete

OPERATOR: License#
Name:
Address 1:
Address 2:
City: State: Zip:
Contact Person:
Phone:
Contact Person Email:
Field Contact Person:
Field Contact Person Phone:

API No. 15-
Spot Description:
Sec. Twp. S. R.
feet from N / S Line of Section
feet from E / W Line of Section
GPS Location: Lat: , Long:
Datum: NAD27 NAD83 WGS84
County: Elevation: GL KB
Lease Name: Well #:
Well Type: Oil Gas OG WSW Other:
SWD Permit #: ENHR Permit #:
Gas Storage Permit #:
Spud Date: Date Shut-In:

Table with 7 columns: Conductor, Surface, Production, Intermediate, Liner, Tubing. Rows include Size, Setting Depth, Amount of Cement, Top of Cement, Bottom of Cement.

Casing Fluid Level from Surface: How Determined? Date:
Casing Squeeze(s): to w / sacks of cement, to w / sacks of cement. Date:
Do you have a valid Oil & Gas Lease? Yes No
Depth and Type: Junk in Hole at Tools in Hole at Casing Leaks: Yes No Depth of casing leak(s):
Type Completion: ALT. I ALT. II Depth of: DV Tool: w / sacks of cement Port Collar: w / sack of cement
Packer Type: Size: Inch Set at: Feet
Total Depth: Plug Back Depth: Plug Back Method:

Geological Data:

Table with 4 columns: Formation Name, Formation Top, Formation Base, Completion Information. Rows 1 and 2.

UNDER PENALTY OF PERJURY I HEREBY ATTEST THAT THE INFORMATION CONTAINED HEREIN IS TRUE AND CORRECT TO THE BEST OF MY KNOWLEDGE

Submitted Electronically

Do NOT Write in This Space - KCC USE ONLY
Date Tested: Results: Date Plugged: Date Repaired: Date Put Back in Service:
Review Completed by: Comments:
TA Approved: Yes Denied Date:

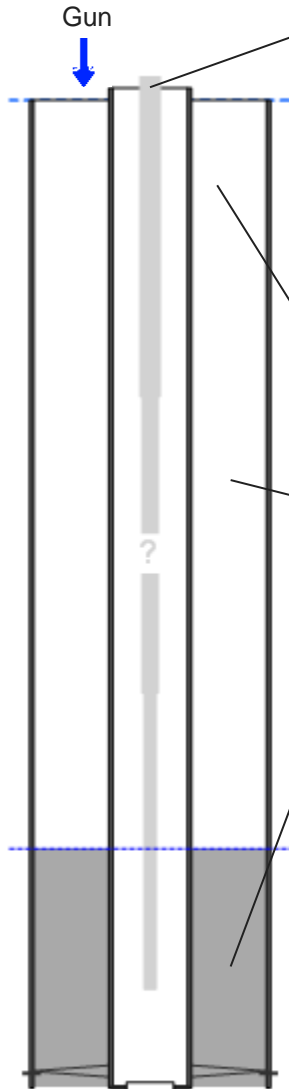
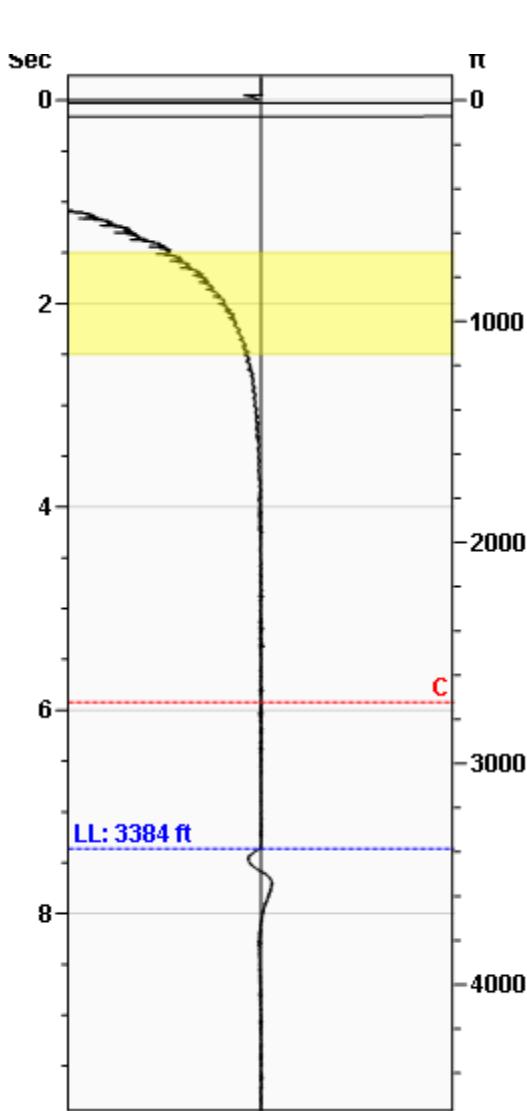
Mail to the Appropriate KCC Conservation Office:

Table with 3 columns: District Office #, Address, Phone. Includes map of Kansas with numbered districts 1-4.

WG Unknown

Fluid Above Pump  
Liquid Level

1083 ft  
3384 ft



Production			
Date Entered			11/25/19
	Current	Potential	
Oil	**	**	BBL/D
Water	**	**	BBL/D
Gas	**	**	Mscf/D
IPR Method			Vogel

Casing Pressure	
Pressure	-1.2 psi (g)

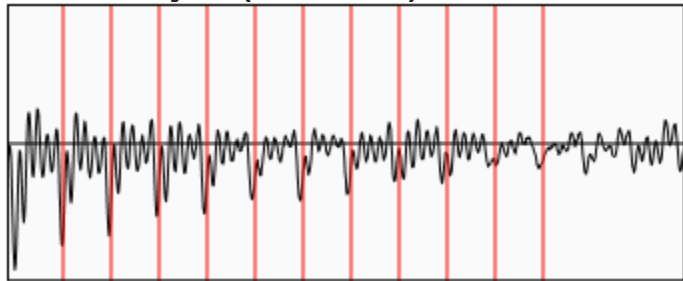
Annular Gas Flow	
Gas Flow	0.0 Mscf/D

Fluid Properties	
Gas Free Above Pump	1083 ft
% Liquid Above Pump	100.00%
% Liquid Below Pump	**

Wellbore Pressures	
PIP	367.6 psi (g) @ 4467 ft
PBHP	348.8 psi (g) @ 4410 ft
SBHP	**

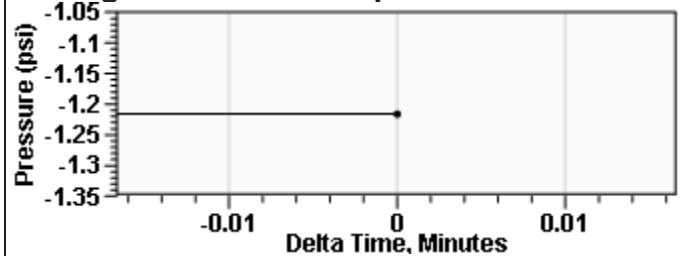
Depths	
Pump Intake Depth	4467 ft
Formation Depth	4410 ft

**Collar Analysis (Automatic)**



Average Acoustic Velocity 920 ft/s  
Average Joints Per Sec. 14.10 Jts/sec  
Joints To Liquid 103.79 Jts

**Casing Pressure Buildup**



Casing Pressure -1.2 psi (g)  
Buildup 0.0 psi (g)  
Buildup Time 0 sec  
Gas Gravity 1.0564 Air = 1

**Comments and Recommendations**

11-25-19 - Acoustic Test  
static, TA'd

Echometer Company  
5001 Ditto Lane  
Wichita Falls, TX 76302  
(940) 767-4334  
info@echometer.com

December 13, 2019

Rich Pancake  
Murfin Drilling Co., Inc.  
250 N WATER STE 300  
WICHITA, KS 67202-1216

Re: Temporary Abandonment  
API 15-153-21151-00-00  
FRISBIE 'A' 4-6  
SW/4 Sec.06-02S-36W  
Rawlins County, Kansas

Dear Rich Pancake:

"Your temporary abandonment (TA) application for the well listed above has been approved. In accordance with K.A.R. 82-3-111 the TA status of this well will expire 12/13/2020.

- \* If you return this well to service or plug it, please notify the District Office.
- \* If you sell this well you are required to file a Transfer of Operator form, T-1.
- \* If the well will remain temporarily abandoned, you must submit a new TA application, CP-111, before 12/13/2020.

You may contact me at the number above if you have questions.

Very truly yours,

RICHARD WILLIAMS"