

**KANSAS CORPORATION COMMISSION  
OIL & GAS CONSERVATION DIVISION**

**TEMPORARY ABANDONMENT WELL APPLICATION**

OPERATOR: License# \_\_\_\_\_  
 Name: \_\_\_\_\_  
 Address 1: \_\_\_\_\_  
 Address 2: \_\_\_\_\_  
 City: \_\_\_\_\_ State: \_\_\_\_\_ Zip: \_\_\_\_\_ + \_\_\_\_\_  
 Contact Person: \_\_\_\_\_  
 Phone: ( \_\_\_\_\_ ) \_\_\_\_\_  
 Contact Person Email: \_\_\_\_\_  
 Field Contact Person: \_\_\_\_\_  
 Field Contact Person Phone: ( \_\_\_\_\_ ) \_\_\_\_\_

API No. 15- \_\_\_\_\_  
 Spot Description: \_\_\_\_\_  
 \_\_\_\_\_ - \_\_\_\_\_ - \_\_\_\_\_ - \_\_\_\_\_ Sec. \_\_\_\_\_ Twp. \_\_\_\_\_ S. R. \_\_\_\_\_  E  W  
 \_\_\_\_\_ feet from  N /  S Line of Section  
 \_\_\_\_\_ feet from  E /  W Line of Section  
 GPS Location: Lat: \_\_\_\_\_, Long: \_\_\_\_\_  
(e.g. xx.xxxxx) (e.g. -xxx.xxxxx)  
 Datum:  NAD27  NAD83  WGS84  
 County: \_\_\_\_\_ Elevation: \_\_\_\_\_  GL  KB  
 Lease Name: \_\_\_\_\_ Well #: \_\_\_\_\_  
 Well Type: (check one)  Oil  Gas  OG  WSW  Other: \_\_\_\_\_  
 SWD Permit #: \_\_\_\_\_  ENHR Permit #: \_\_\_\_\_  
 Gas Storage Permit #: \_\_\_\_\_  
 Spud Date: \_\_\_\_\_ Date Shut-In: \_\_\_\_\_

	Conductor	Surface	Production	Intermediate	Liner	Tubing
Size						
Setting Depth						
Amount of Cement						
Top of Cement						
Bottom of Cement						

Casing Fluid Level from Surface: \_\_\_\_\_ How Determined? \_\_\_\_\_ Date: \_\_\_\_\_  
 Casing Squeeze(s): \_\_\_\_\_ to \_\_\_\_\_ w / \_\_\_\_\_ sacks of cement, \_\_\_\_\_ to \_\_\_\_\_ w / \_\_\_\_\_ sacks of cement. Date: \_\_\_\_\_  
(top) (bottom) (top) (bottom)  
 Do you have a valid Oil & Gas Lease?  Yes  No  
 Depth and Type:  Junk in Hole at \_\_\_\_\_  Tools in Hole at \_\_\_\_\_ Casing Leaks:  Yes  No Depth of casing leak(s): \_\_\_\_\_  
(depth) (depth)  
 Type Completion:  ALT. I  ALT. II Depth of:  DV Tool: \_\_\_\_\_ w / \_\_\_\_\_ sacks of cement  Port Collar: \_\_\_\_\_ w / \_\_\_\_\_ sack of cement  
(depth) (depth)  
 Packer Type: \_\_\_\_\_ Size: \_\_\_\_\_ Inch Set at: \_\_\_\_\_ Feet  
 Total Depth: \_\_\_\_\_ Plug Back Depth: \_\_\_\_\_ Plug Back Method: \_\_\_\_\_

**Geological Data:**

Formation Name	Formation Top	Formation Base	Completion Information
1. _____	At: _____	to _____ Feet	Perforation Interval _____ to _____ Feet or Open Hole Interval _____ to _____ Feet
2. _____	At: _____	to _____ Feet	Perforation Interval _____ to _____ Feet or Open Hole Interval _____ to _____ Feet

UNDER PENALTY OF PERJURY I HEREBY ATTEST THAT THE INFORMATION CONTAINED HEREIN IS TRUE AND CORRECT TO THE BEST OF MY KNOWLEDGE

**Submitted Electronically**

<b>Do NOT Write in This Space - KCC USE ONLY</b>	Date Tested: _____	Results: _____	Date Plugged: _____	Date Repaired: _____	Date Put Back in Service: _____
	Review Completed by: _____ Comments: _____				
TA Approved: <input type="checkbox"/> Yes <input type="checkbox"/> Denied Date: _____					

**Mail to the Appropriate KCC Conservation Office:**

	KCC District Office #1 - 210 E. Frontview, Suite A, Dodge City, KS 67801	Phone 620.682.7933
	KCC District Office #2 - 3450 N. Rock Road, Building 600, Suite 601, Wichita, KS 67226	Phone 316.337.7400
	KCC District Office #3 - 137 E. 21st St., Chanute, KS 66720	Phone 620.902.6450
	KCC District Office #4 - 2301 E. 13th Street, Hays, KS 67601-2651	Phone 785.261.6250

**General**

Well ID 126010  
Well Ruth Ellen 3420 1-11H  
Company Sandridge  
Operator - \* -  
Lease Name Ruth Ellen 3420 1-11H  
Elevation 1785.00 ft  
Production Method Other  
Dataset Description

Comment

**Surface Unit**

Manufacturer - \* -  
Unit Class Conventional  
Unit API Number - \* -  
Measured Stroke Length 100.000 in  
Rotation CW  
Counter Balance Effect (Weights Level) - \* - Klb  
Weight Of Counter Weights 2000 lb

**Prime Mover**

Motor Type Electric  
Rated HP - \* - HP  
Run Time 24 hr/day  
MFG/Comment - \* -

**Electric Motor Parameters**

Rated Full Load AMPS - \* -  
Rated Full Load RPM - \* -  
Synchronous RPM 1200  
Voltage - \* -  
Hertz 60  
Phase 3  
Power Consumption 5  
Power Demand 8 \$/KW

**Tubulars**

Tubing OD 2.875 in  
Casing OD 7.000 in  
Average Joint Length 31.700 ft  
Anchor Depth - \* - ft  
Kelly Bushing 15.00 ft

**Pump**

Plunger Diameter - \* - in  
Pump Intake Depth 5208.00 ft  
\*\*Total Rod Length < Pump Depth

**Polished Rod**

Polished Rod Diameter - \* - in

**Rod String**

	Top Taper	Taper 2	Taper 3	Taper 4	Taper 5	Taper 6
Rod Type	- * -	- * -	- * -	- * -	- * -	- * -
Rod Length	- * -	- * -	- * -	- * -	- * -	- * - ft
Rod Diameter	- * -	- * -	- * -	- * -	- * -	- * - in
Rod Weight	0.0	0.0	0.0	0.0	0.0	0.0 lb

Total Rod Length 0  
Total Rod Weight 0.00

Damp Up 0.05104  
Damp Down 0.05104

**Conditions**

**Pressure**

Static BHP 716.0 psi (g)  
Static BHP Method Acoustic  
Static BHP Date 12/10/2019  
  
Producing BHP - \* - psi (g)  
Producing BHP Method - \* -  
Producing BHP Date - \* -  
Formation Depth 5350.00 ft

**Production**

Oil Production 0 BBL/D  
Water Production 1 BBL/D  
Gas Production - \* - Mscf/D  
Production Date 12/10/2019

**Temperatures**

Surface Temperature 70 deg F  
Bottomhole Temperature 150 deg F

**Surface Producing Pressures**

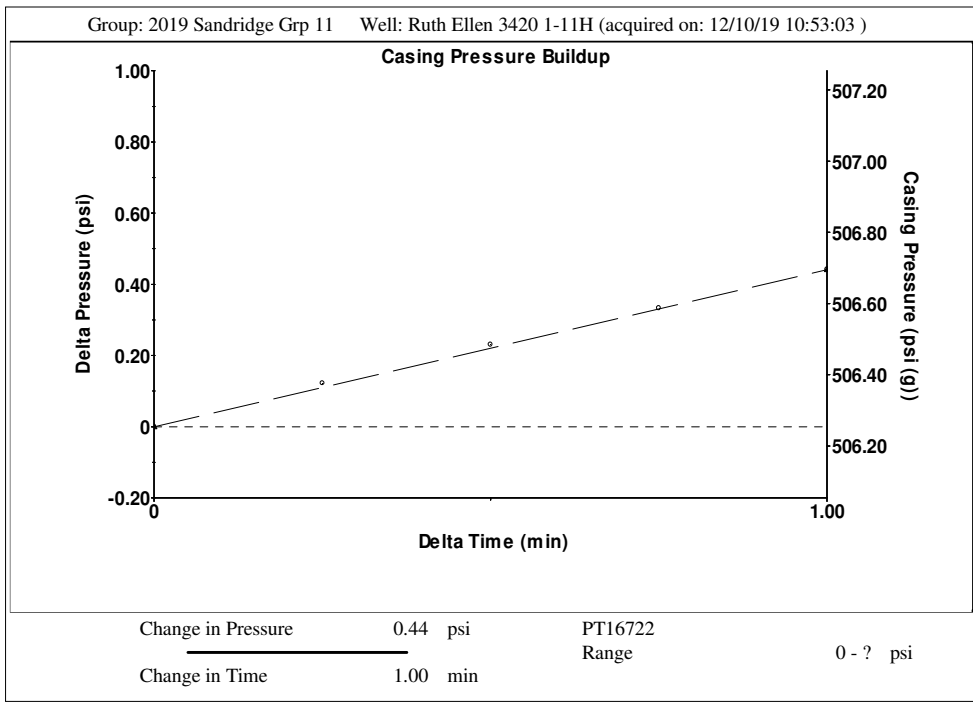
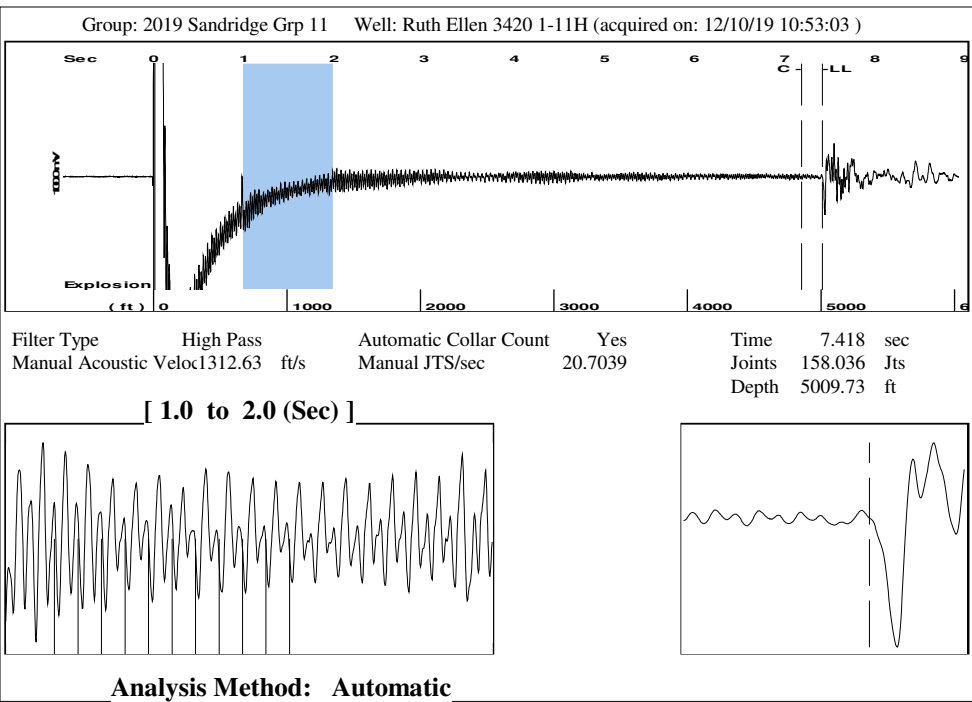
Tubing Pressure - \* - psi (g)  
Casing Pressure 506.3 psi (g)

**Fluid Properties**

Oil API 40 deg.API  
Water Specific Gravity 1.05 Sp.Gr.H2O

**Casing Pressure Buildup**

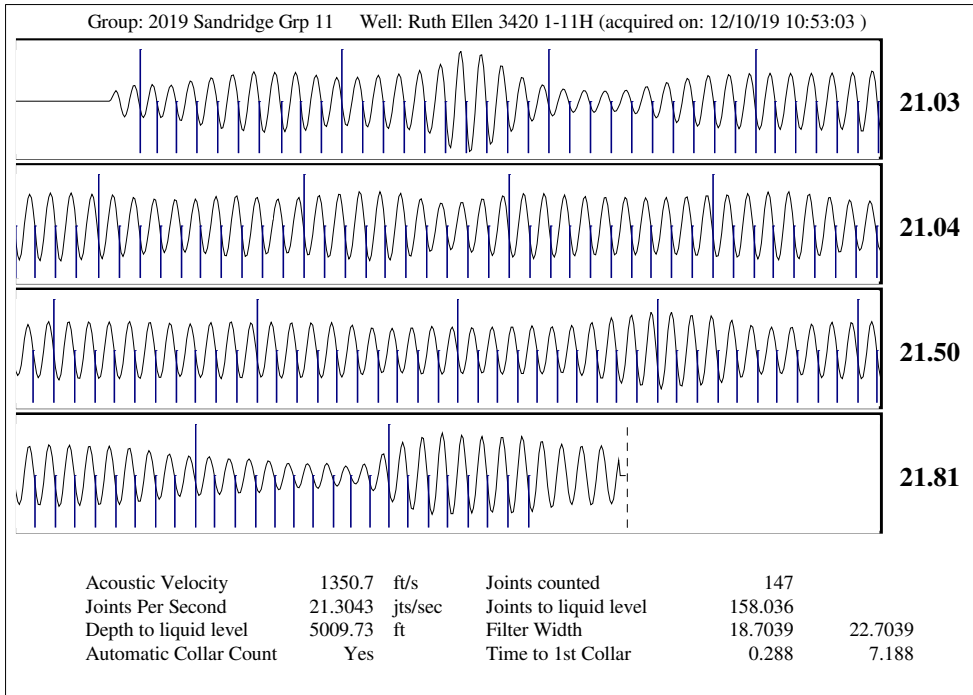
Change in Pressure 0.4 psi  
Over Change in Time 1.00 min



Group: 2019 Sandridge Grp 11 Well: Ruth Ellen 3420 1-11H (acquired on: 12/10/19 10:53:03)

<b>Production</b>		<b>Potential</b>		<b>Casing Pressure</b>		
Oil	0	- * -	BBL/D	506.3	psi (g)	
Water	1	- * -	BBL/D	0.4	psi	
Gas	- * -	- * -	Mscf/D	1.00	min	
<b>IPR Method</b>		<b>Vogel</b>		<b>Gas/Liquid Interface Pressure</b>		<b>Static BHP</b> 716.0 psi (g)
PBHP/SBHP		- * -		568.1 psi (g)		
<b>Production Efficiency</b>		0.0		<b>Liquid Level Depth</b>		<b>Oil Column Height</b> MD 0 ft  <b>Water Column Height</b> MD 325 ft
Oil	40 deg.API			5009.73 ft		
Water	1.05 Sp.Gr.H2O			<b>Tubing Intake Depth</b>		
Gas	0.63 Sp.Gr.AIR			5208.00 ft		<b>Formation Depth</b> 5350.00 ft
<b>Acoustic Velocity</b>		1350.7 ft/s				

Ruth Ellen 3420 1-11H



December 19, 2019

Diane Overbey  
SandRidge Exploration and Production LLC  
123 ROBERT S. KERR AVE  
OKLAHOMA CITY, OK 73102-6406

Re: Temporary Abandonment  
API 15-033-21755-01-00  
RUTH ELLEN 3420 1-11H  
SE/4 Sec.02-34S-20W  
Comanche County, Kansas

Dear Diane Overbey:

"Your temporary abandonment (TA) application for the well listed above has been approved. In accordance with K.A.R. 82-3-111 the TA status of this well will expire 12/19/2020.

- \* If you return this well to service or plug it, please notify the District Office.
- \* If you sell this well you are required to file a Transfer of Operator form, T-1.
- \* If the well will remain temporarily abandoned, you must submit a new TA application, CP-111, before 12/19/2020.

You may contact me at the number above if you have questions.

Very truly yours,

Scott Alberg"