

KANSAS CORPORATION COMMISSION  
OIL & GAS CONSERVATION DIVISION

TEMPORARY ABANDONMENT WELL APPLICATION

OPERATOR: License# \_\_\_\_\_  
 Name: \_\_\_\_\_  
 Address 1: \_\_\_\_\_  
 Address 2: \_\_\_\_\_  
 City: \_\_\_\_\_ State: \_\_\_\_\_ Zip: \_\_\_\_\_ + \_\_\_\_\_  
 Contact Person: \_\_\_\_\_  
 Phone: ( \_\_\_\_\_ ) \_\_\_\_\_  
 Contact Person Email: \_\_\_\_\_  
 Field Contact Person: \_\_\_\_\_  
 Field Contact Person Phone: ( \_\_\_\_\_ ) \_\_\_\_\_

API No. 15- \_\_\_\_\_  
 Spot Description: \_\_\_\_\_  
 \_\_\_\_\_ - \_\_\_\_\_ - \_\_\_\_\_ - \_\_\_\_\_ Sec. \_\_\_\_\_ Twp. \_\_\_\_\_ S. R. \_\_\_\_\_  E  W  
 \_\_\_\_\_ feet from  N /  S Line of Section  
 \_\_\_\_\_ feet from  E /  W Line of Section  
 GPS Location: Lat: \_\_\_\_\_, Long: \_\_\_\_\_  
(e.g. xx.xxxxx) (e.g. -xxx.xxxxx)  
 Datum:  NAD27  NAD83  WGS84  
 County: \_\_\_\_\_ Elevation: \_\_\_\_\_  GL  KB  
 Lease Name: \_\_\_\_\_ Well #: \_\_\_\_\_  
 Well Type: (check one)  Oil  Gas  OG  WSW  Other: \_\_\_\_\_  
 SWD Permit #: \_\_\_\_\_  ENHR Permit #: \_\_\_\_\_  
 Gas Storage Permit #: \_\_\_\_\_  
 Spud Date: \_\_\_\_\_ Date Shut-In: \_\_\_\_\_

	Conductor	Surface	Production	Intermediate	Liner	Tubing
Size						
Setting Depth						
Amount of Cement						
Top of Cement						
Bottom of Cement						

Casing Fluid Level from Surface: \_\_\_\_\_ How Determined? \_\_\_\_\_ Date: \_\_\_\_\_  
 Casing Squeeze(s): \_\_\_\_\_ to \_\_\_\_\_ w / \_\_\_\_\_ sacks of cement, \_\_\_\_\_ to \_\_\_\_\_ w / \_\_\_\_\_ sacks of cement. Date: \_\_\_\_\_  
(top) (bottom) (top) (bottom)  
 Do you have a valid Oil & Gas Lease?  Yes  No  
 Depth and Type:  Junk in Hole at \_\_\_\_\_  Tools in Hole at \_\_\_\_\_ Casing Leaks:  Yes  No Depth of casing leak(s): \_\_\_\_\_  
(depth) (depth)  
 Type Completion:  ALT. I  ALT. II Depth of:  DV Tool: \_\_\_\_\_ w / \_\_\_\_\_ sacks of cement  Port Collar: \_\_\_\_\_ w / \_\_\_\_\_ sack of cement  
(depth) (depth)  
 Packer Type: \_\_\_\_\_ Size: \_\_\_\_\_ Inch Set at: \_\_\_\_\_ Feet  
 Total Depth: \_\_\_\_\_ Plug Back Depth: \_\_\_\_\_ Plug Back Method: \_\_\_\_\_

**Geological Data:**

Formation Name	Formation Top	Formation Base	Completion Information
1. _____	At: _____	to _____ Feet	Perforation Interval _____ to _____ Feet or Open Hole Interval _____ to _____ Feet
2. _____	At: _____	to _____ Feet	Perforation Interval _____ to _____ Feet or Open Hole Interval _____ to _____ Feet

UNDER PENALTY OF PERJURY I HEREBY ATTEST THAT THE INFORMATION CONTAINED HEREIN IS TRUE AND CORRECT TO THE BEST OF MY KNOWLEDGE

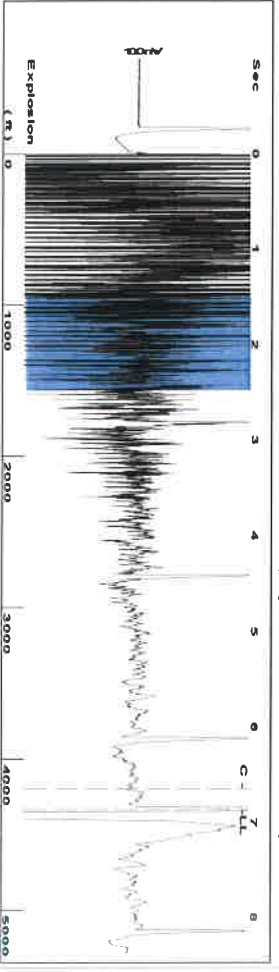
Submitted Electronically

<b>Do NOT Write in This Space - KCC USE ONLY</b>	Date Tested: _____	Results: _____	Date Plugged: _____	Date Repaired: _____	Date Put Back in Service: _____
	Review Completed by: _____ Comments: _____				
TA Approved: <input type="checkbox"/> Yes <input type="checkbox"/> Denied Date: _____					

Mail to the Appropriate KCC Conservation Office:

	KCC District Office #1 - 210 E. Frontview, Suite A, Dodge City, KS 67801	Phone 620.682.7933
	KCC District Office #2 - 3450 N. Rock Road, Building 600, Suite 601, Wichita, KS 67226	Phone 316.337.7400
	KCC District Office #3 - 137 E. 21st St., Chanute, KS 66720	Phone 620.902.6450
	KCC District Office #4 - 2301 E. 13th Street, Hays, KS 67601-2651	Phone 785.261.6250

Group: EDISON OPERATING Well: WRIGHT B 1-35 (acquired on: 09/26/19 14:14:22)



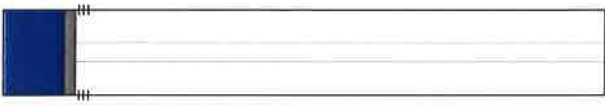
Filter Type High Pass Automatic Collar Count Yes  
 Manual Acoustic Velo 1278.23 ft/s Manual JTS/sec 20.1613  
 Time 6.864 sec  
 Joints 136.72 Jts  
 Depth 4334.03 ft



**Analysis Method: Automatic**

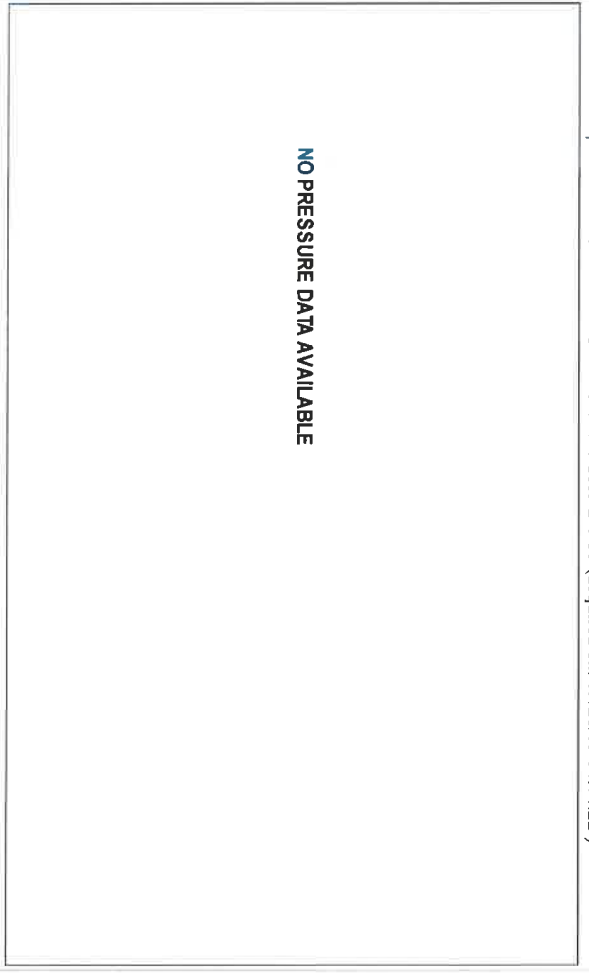
Group: EDISON OPERATING Well: WRIGHT B 1-35 (acquired on: 09/26/19 14:14:22)

Production Current	Potential	Casing Pressure	Static
Oil - * -	- * -	110.9 psi (g)	Oil Column Height
Water - * -	- * -	BBL/D	MD 0 ft
Gas - * -	- * -	BBL/D	
		0.1 psi	
IPR Method	Vogel	Gas/Liquid Interface Pressure	
PBHP/SBHP	- * -	0.50 min	
Production Efficiency	0.0	125.0 psi (g)	
Oil 40 deg API		Liquid Level Depth	Water Column Height
Water 1.05 Sp.Gr.H2O		4334.03 ft	MD - * - ft
Gas 0.73 Sp.Gr.AIR		Pump Intake Depth	
Acoustic Velocity		4228.00 ft	
		Formation Depth	
		4156.00 ft	



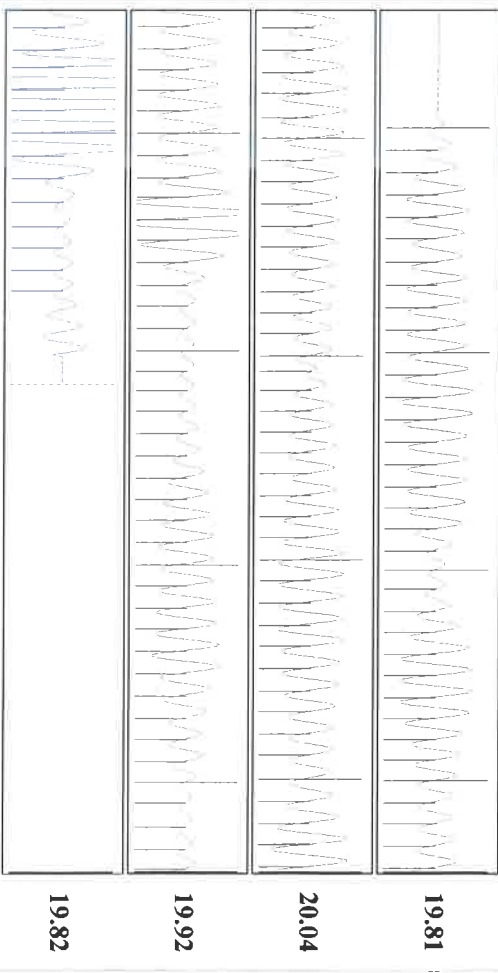
Acoustic Test

Group: EDISON OPERATING Well: WRIGHT B 1-35 (acquired on: 09/26/19 14:14:22)



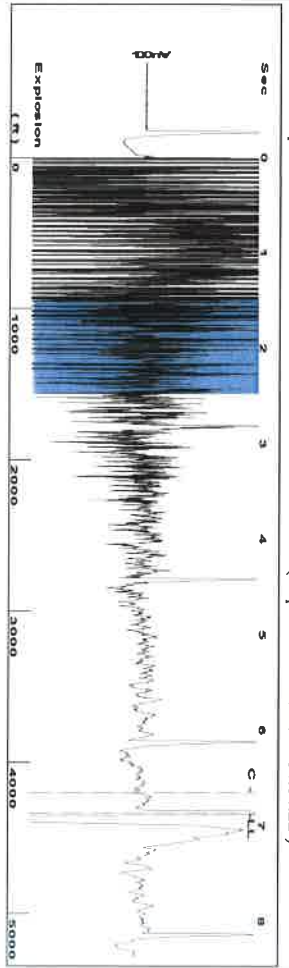
Change in Pressure 0.00 psi PT14020 Range  
 Change in Time 0.00 min 0 - ? psi

Group: EDISON OPERATING Well: WRIGHT B 1-35 (acquired on: 09/26/19 14:14:22)



Acoustic Velocity	1262.83 ft/s	Joints counted	127
Joints Per Second	19.9184 Jts/sec	Joints to liquid level	136.72
Depth to liquid level	4334.03 ft	Filter Width	18.1613
Automatic Collar Count	Yes	Time to 1st Collar	0.272

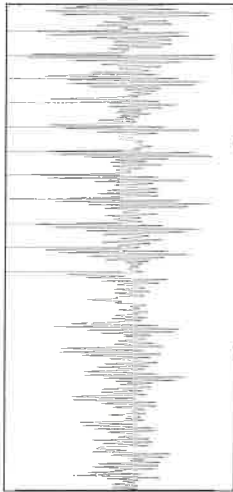
Group: EDISON OPERATING Well: WRIGHT B 1-35 (acquired on: 09/26/19 14:14:22)



Filter Type High Pass  
Manual Acoustic Velo 1278.23 ft/s  
Automatic Collar Count Yes  
Manual JTS/sec 20.1613

Time 6.864 sec  
Joints 136.72 Jts  
Depth 4334.03 ft

1.5 to 2.5 (Sec)



**Analysis Method: Automatic**

Group: EDISON OPERATING Well: WRIGHT B 1-35 (acquired on: 09/26/19 14:14:22)

Production Current	Potential	Casing Pressure	Static
Oil -*- BBL/D	-*- BBL/D	110.9 psi (g)	Oil Column Height
Water -*- BBL/D	-*- BBL/D	Casing Pressure Buildup	MD 0 ft
Gas -*- Mscf/D	-*- Mscf/D	0.50 min	Water Column Height
IPR Method	Vogel	Gas/Liquid Interface Pressure	MD -*- ft
PBHP/SBHP	-*-	125.0 psi (g)	Static BHP
Production Efficiency	0.0	Liquid Level Depth	124.5 psi (g)
Oil 40 deg API		4334.03 ft	
Water 1.05 Sp.Gr.H2O		Pump Intake Depth	
Gas 0.73 Sp.Gr.AIR		4228.00 ft	
Acoustic Velocity	1262.83 ft/s	Formation Depth	
		4156.00 ft	

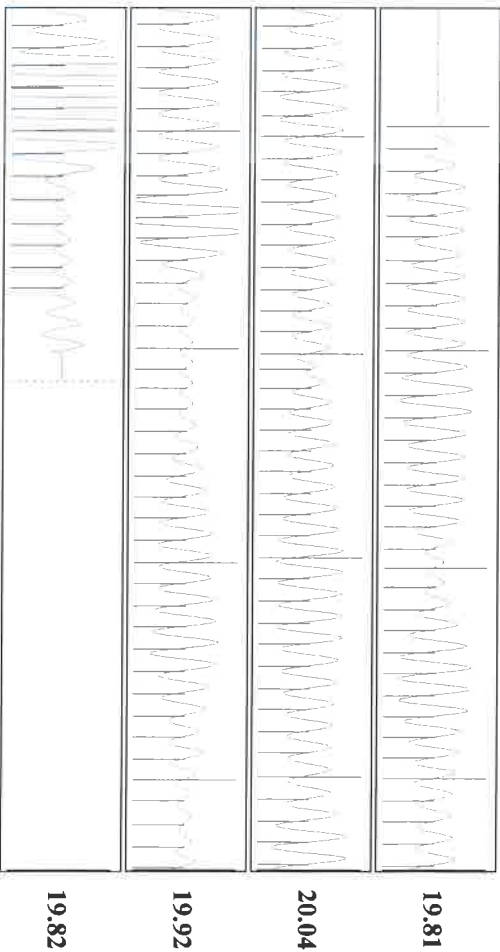


Group: EDISON OPERATING Well: WRIGHT B 1-35 (acquired on: 09/26/19 14:14:22)

**NO PRESSURE DATA AVAILABLE**

Change in Pressure 0.00 psi PT14020  
Change in Time 0.00 min Range 0 - ? psi

Group: EDISON OPERATING Well: WRIGHT B 1-35 (acquired on: 09/26/19 14:14:22)



Acoustic Velocity	1262.83 ft/s	Joints counted	127
Joints Per Second	19.9184 jts/sec	Joints to liquid level	136.72
Depth to liquid level	4334.03 ft	Filter Width	18.1613
Automatic Collar Count	Yes	Time to 1st Collar	0.272

December 19, 2019

Brian J McCoy  
Edison Operating Company LLC  
8100 E. 22ND ST. N., BLDG 1900  
WICHITA, KS 67226

Re: Temporary Abandonment  
API 15-095-00425-00-00  
WRIGHT B 1-35  
SE/4 Sec.35-29S-09W  
Kingman County, Kansas

Dear Brian J McCoy:

"Your temporary abandonment (TA) application for the well listed above has been approved. In accordance with K.A.R. 82-3-111 the TA status of this well will expire 12/19/2020.

- \* If you return this well to service or plug it, please notify the District Office.
- \* If you sell this well you are required to file a Transfer of Operator form, T-1.
- \* If the well will remain temporarily abandoned, you must submit a new TA application, CP-111, before 12/19/2020.

You may contact me at the number above if you have questions.

Very truly yours,

BJ Hope"