

KANSAS CORPORATION COMMISSION
OIL & GAS CONSERVATION DIVISION

TEMPORARY ABANDONMENT WELL APPLICATION

OPERATOR: License#
Name:
Address 1:
Address 2:
City: State: Zip:
Contact Person:
Phone:
Contact Person Email:
Field Contact Person:
Field Contact Person Phone:

API No. 15-
Spot Description:
Sec. Twp. S. R.
GPS Location: Lat: Long:
Datum: NAD27 NAD83 WGS84
County: Elevation:
Lease Name: Well #:
Well Type: Oil Gas OG WSW Other:
SWD Permit #: ENHR Permit #:
Gas Storage Permit #:
Spud Date: Date Shut-In:

Table with 7 columns: Conductor, Surface, Production, Intermediate, Liner, Tubing. Rows include Size, Setting Depth, Amount of Cement, Top of Cement, Bottom of Cement.

Casing Fluid Level from Surface: How Determined? Date:
Casing Squeeze(s): to w / sacks of cement, to w / sacks of cement. Date:
Do you have a valid Oil & Gas Lease? Yes No
Depth and Type: Junk in Hole at Tools in Hole at Casing Leaks: Yes No Depth of casing leak(s):
Type Completion: ALT. I ALT. II Depth of: DV Tool: w / sacks of cement Port Collar: w / sack of cement
Packer Type: Size: Inch Set at: Feet
Total Depth: Plug Back Depth: Plug Back Method:

Geological Date:

Table with 4 columns: Formation Name, Formation Top, Formation Base, Completion Information. Rows 1 and 2.

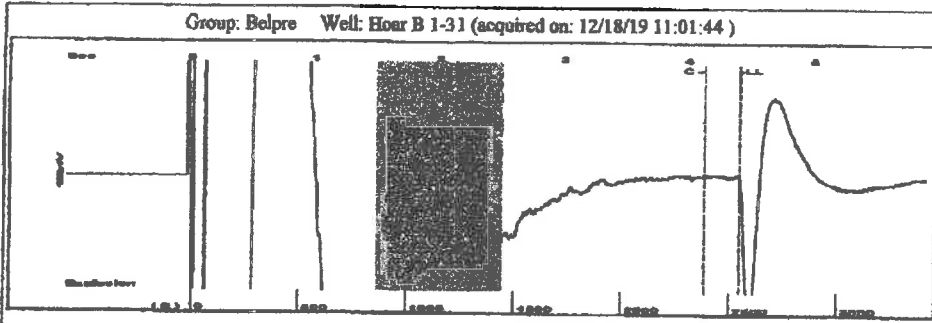
UNDER PENALTY OF PERJURY I HEREBY ATTEST THAT THE INFORMATION CONTAINED HEREIN IS TRUE AND CORRECT TO THE BEST OF MY KNOWLEDGE

Submitted Electronically

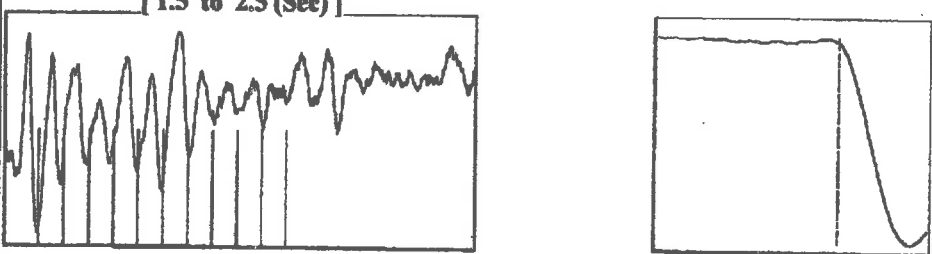
Do NOT Write in This Space - KCC USE ONLY
Date Tested: Results: Date Plugged: Date Repaired: Date Put Back in Service:
Review Completed by: Comments:
TA Approved: Yes Denied Date:

Mail to the Appropriate KCC Conservation Office:

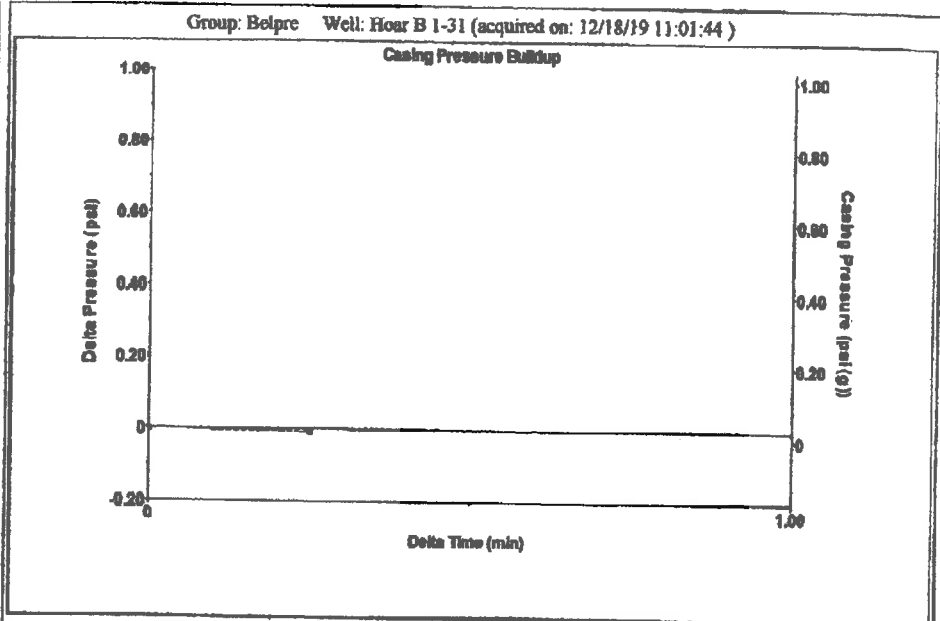
Table with 2 columns: Office Address, Phone. Rows for District Office #1, #2, #3, #4.



Filter Type High Pass Automatic Collar Count Yes Time 4.401 sec
 Manual Acoustic Velo 1180.72 ft/s Manual JTS/sec 18.9036 Joints 81.5425 fts
 Depth 2546.57 ft



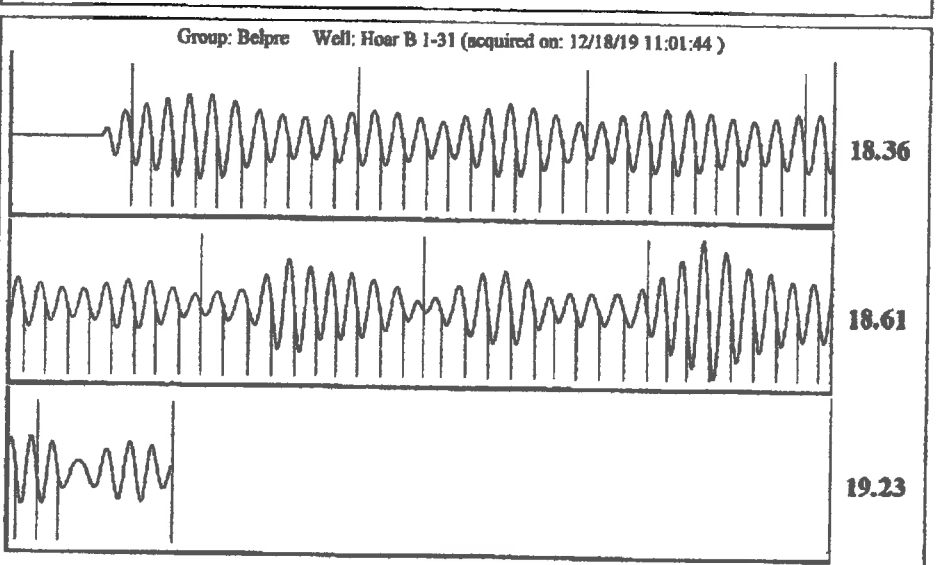
Analysis Method: Automatic



Change in Pressure -0.01 psi PT13440
 Change in Time 0.25 min Range 0 - 7 psi

Group: Belpre Well: Hoar B 1-31 (acquired on: 12/18/19 11:01:44)

Production	Potential	Casing Pressure	Producing
Oil - * -	- * - BBL/D	0.0 psi (g)	
Water - * -	- * - BBL/D	Casing Pressure Buildup	Annular Gas Flow
Gas - * -	- * - Mscf/D	-0.0 psi	0 Mscf/D
		0.25 min	% Liquid
		Gas/Liquid Interface Pressure	100 %
		1.1 psi (g)	
IPR Method	Vogel	Liquid Level Depth	Pump Intake
FBHP/SBHP	- * -	2546.57 ft	612.3 psi (g)
Production Efficiency	0.0	Pump Intake Depth	Producing BHP
		4373.00 ft	612.3 psi (g)
		Formation Depth	Static BHP
		4373.00 ft	- * - psi (g)
Oil 40 deg.API			
Water 1.05 Sp.Gr.H2O			
Gas 0.83 Sp.Gr.AIR			
Acoustic Velocity 1157.27 ft/s			
Formation Submergence			
Total Gaseous Liquid Column HT (TVD) 1826 ft			
Equivalent Gas Free Liquid HT (TVD) 1826 ft			
Acoustic Test			



Acoustic Velocity 1157.27 ft/s Joints counted 71
 Joints Per Second 18.5282 jts/sec Joints to liquid level 81.5425
 Depth to liquid level 2546.57 ft Filter Width 16.9036 20.9036
 Automatic Collar Count Yes Time to 1st Collar 0.292 4.124

December 19, 2019

Loveness Mpanje
F. G. Holl Company L.L.C.
9431 E CENTRAL STE 100
WICHITA, KS 67206-2563

Re: Temporary Abandonment
API 15-145-20643-00-00
HOAR B 1-31
NW/4 Sec.31-23S-17W
Pawnee County, Kansas

Dear Loveness Mpanje:

"Your temporary abandonment (TA) application for the well listed above has been approved. In accordance with K.A.R. 82-3-111 the TA status of this well will expire 12/19/2020.

- * If you return this well to service or plug it, please notify the District Office.
- * If you sell this well you are required to file a Transfer of Operator form, T-1.
- * If the well will remain temporarily abandoned, you must submit a new TA application, CP-111, before 12/19/2020.

You may contact me at the number above if you have questions.

Very truly yours,

Scott Alberg"