

KANSAS CORPORATION COMMISSION
OIL & GAS CONSERVATION DIVISION

TEMPORARY ABANDONMENT WELL APPLICATION

OPERATOR: License#
Name:
Address 1:
Address 2:
City: State: Zip:
Contact Person:
Phone:
Contact Person Email:
Field Contact Person:
Field Contact Person Phone:

API No. 15-
Spot Description:
Sec. Twp. S. R.
GPS Location: Lat, Long
Datum: NAD27, NAD83, WGS84
County: Elevation:
Lease Name: Well #:
Well Type: Oil, Gas, OG, WSW, Other
SWD Permit #: ENHR Permit #:
Gas Storage Permit #:
Spud Date: Date Shut-In:

Table with 7 columns: Conductor, Surface, Production, Intermediate, Liner, Tubing. Rows include Size, Setting Depth, Amount of Cement, Top of Cement, Bottom of Cement.

Casing Fluid Level from Surface: How Determined? Date:
Casing Squeeze(s): to w / sacks of cement, to w / sacks of cement. Date:
Do you have a valid Oil & Gas Lease? Yes No
Depth and Type: Junk in Hole at Tools in Hole at Casing Leaks: Yes No Depth of casing leak(s):
Type Completion: ALT. I ALT. II Depth of: DV Tool: w / sacks of cement Port Collar: w / sack of cement
Packer Type: Size: Inch Set at: Feet
Total Depth: Plug Back Depth: Plug Back Method:

Geological Date:

Table with 4 columns: Formation Name, Formation Top, Formation Base, Completion Information. Rows 1 and 2.

UNDER PENALTY OF PERJURY I HEREBY ATTEST THAT THE INFORMATION CONTAINED HEREIN IS TRUE AND CORRECT TO THE BEST OF MY KNOWLEDGE

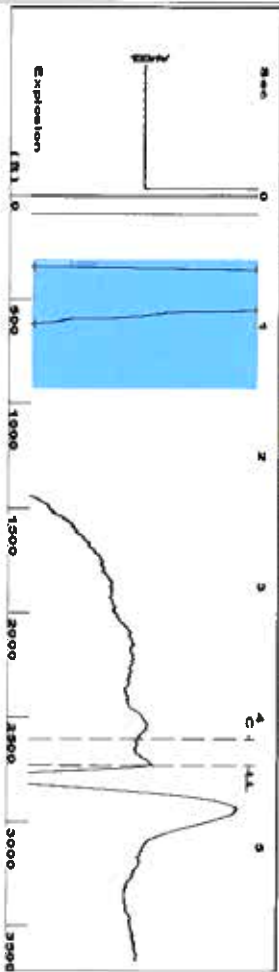
Submitted Electronically

Form with fields: Do NOT Write in This Space - KCC USE ONLY, Date Tested, Results, Date Plugged, Date Repaired, Date Put Back in Service, Review Completed by, Comments, TA Approved: Yes Denied, Date.

Mail to the Appropriate KCC Conservation Office:

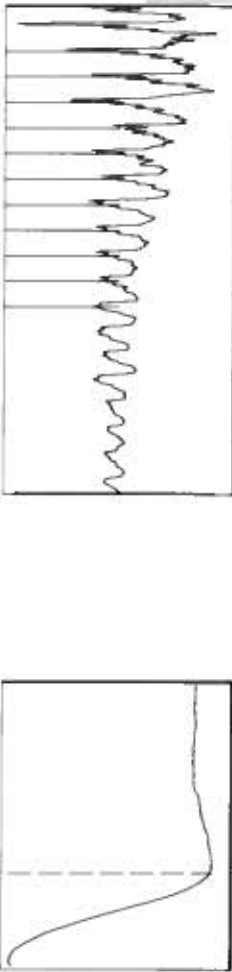
Table with 2 columns: Office Address, Phone. Rows for KCC District Office #1, #2, #3, #4.

Group: TAD Well: Cook F-3 (acquired on: 12/26/19 13:26:44)



Filter Type: High Pass
 Manual Acoustic Velocity: 1207.62 ft/s
 Automatic Collar Count: Yes
 Manual JTS/sec: 19.0476
 Time: 4.377 sec
 Joints: 86.1526 Jts
 Depth: 2731.04 ft

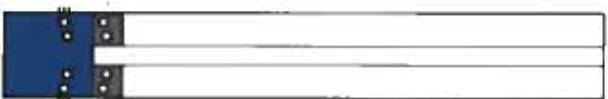
0.5 to 1.5 (Sec)



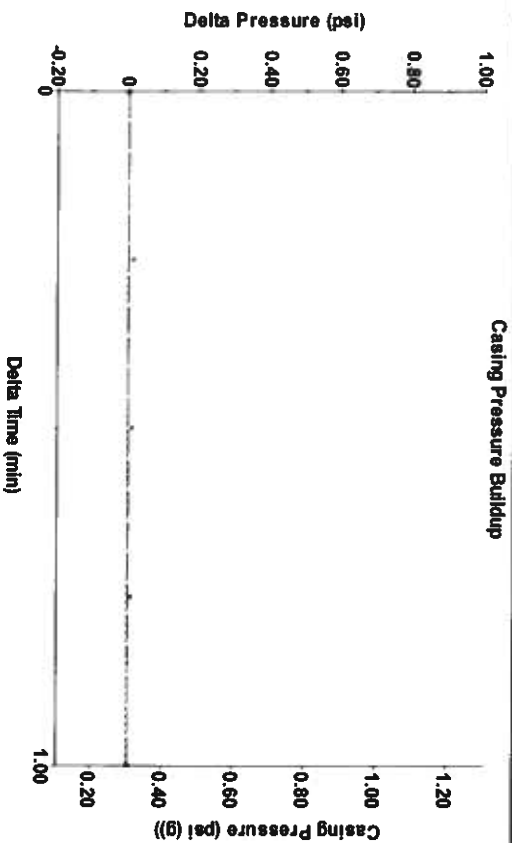
Analysis Method: Automatic

Group: TAD Well: Cook F-3 (acquired on: 12/26/19 13:26:44)

Production	Potential	Casing Pressure	Producing
Current	BBLD	0.3 psi (g)	Annular
Oil	BBLD	0.002 psi	Gas Flow
Water	Misc/D	1.00 mtn	% Liquid
Gas		1.4 psi (g)	100 %
IPR Method	Vogel	Gas/Liquid Interface Pressure	Liquid Stream Below Tubing
PBHP/SBHP			Oil 0 %
Production Efficiency			Water 100 %
Oil 40 deg API		Liquid Level Depth	Liquid Below Tubing
Water 1.05 Sp.Gr.H2O		2731.04 ft	100 %
Gas 0.75 Sp.Gr.AIR		Pump Intake Depth	Pump Intake
Acoustic Velocity		2924.00 ft	67.0 psi (g)
		Formation Depth	Producing BHP
		3115.00 ft	153.9 psi (g)
			Static BHP
			psi (g)

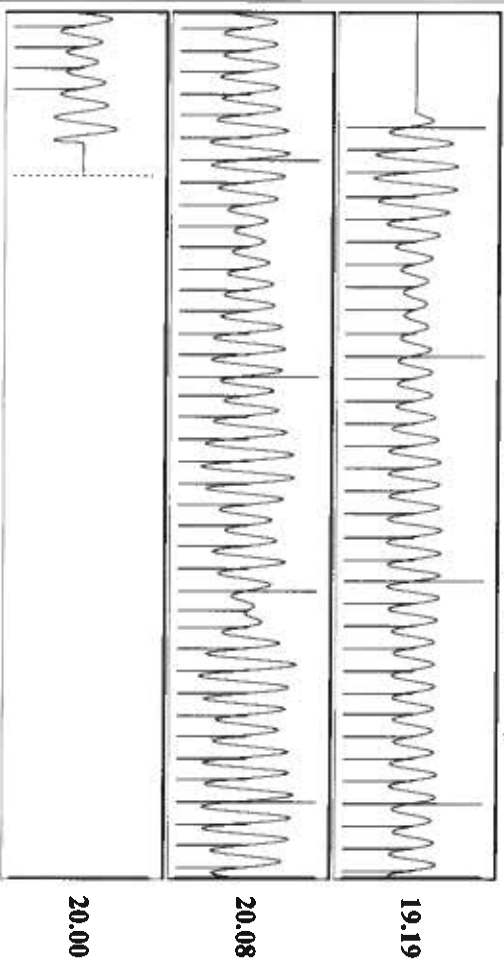


Group: TAD Well: Cook F-3 (acquired on: 12/26/19 13:26:44)



Change in Pressure: 0.00 psi
 Change in Time: 1.00 min
 PT8197 Range
 0 - ? psi

Group: TAD Well: Cook F-3 (acquired on: 12/26/19 13:26:44)



Acoustic Velocity: 1247.9 ft/s
 Joints Per Second: 19.683 Jts/sec
 Depth to liquid level: 2731.04 ft
 Automatic Collar Count: Yes

Joints counted: 77
 Joints to liquid level: 86.1526
 Filler Width: 17.0476
 Time to 1st Collar: 0.264

December 30, 2019

Katherine McClurkan
Merit Energy Company, LLC
13727 Noel Road, Suite 1200
Dallas, TX 75240

Re: Temporary Abandonment
API 15-067-21161-00-00
Cook F 3
SE/4 Sec.25-27S-35W
Grant County, Kansas

Dear Katherine McClurkan:

"Your temporary abandonment (TA) application for the well listed above has been approved. In accordance with K.A.R. 82-3-111 the TA status of this well will expire 12/30/2020.

- * If you return this well to service or plug it, please notify the District Office.
- * If you sell this well you are required to file a Transfer of Operator form, T-1.
- * If the well will remain temporarily abandoned, you must submit a new TA application, CP-111, before 12/30/2020.

You may contact me at the number above if you have questions.

Very truly yours,

Scott Alberg"