

KANSAS CORPORATION COMMISSION
OIL & GAS CONSERVATION DIVISION

TEMPORARY ABANDONMENT WELL APPLICATION

OPERATOR: License#
Name:
Address 1:
Address 2:
City: State: Zip:
Contact Person:
Phone:
Contact Person Email:
Field Contact Person:
Field Contact Person Phone:

API No. 15-
Spot Description:
Sec. Twp. S. R.
GPS Location: Lat: Long:
Datum: NAD27 NAD83 WGS84
County: Elevation:
Lease Name: Well #:
Well Type: Oil Gas OG WSW Other:
SWD Permit #: ENHR Permit #:
Gas Storage Permit #:
Spud Date: Date Shut-In:

Table with 7 columns: Conductor, Surface, Production, Intermediate, Liner, Tubing. Rows include Size, Setting Depth, Amount of Cement, Top of Cement, Bottom of Cement.

Casing Fluid Level from Surface: How Determined? Date:
Casing Squeeze(s): to w / sacks of cement, to w / sacks of cement. Date:
Do you have a valid Oil & Gas Lease? Yes No
Depth and Type: Junk in Hole at Tools in Hole at Casing Leaks: Yes No Depth of casing leak(s):
Type Completion: ALT. I ALT. II Depth of: DV Tool: w / sacks of cement Port Collar: w / sack of cement
Packer Type: Size: Inch Set at: Feet
Total Depth: Plug Back Depth: Plug Back Method:

Geological Data:

Table with 4 columns: Formation Name, Formation Top, Formation Base, Completion Information. Rows 1 and 2.

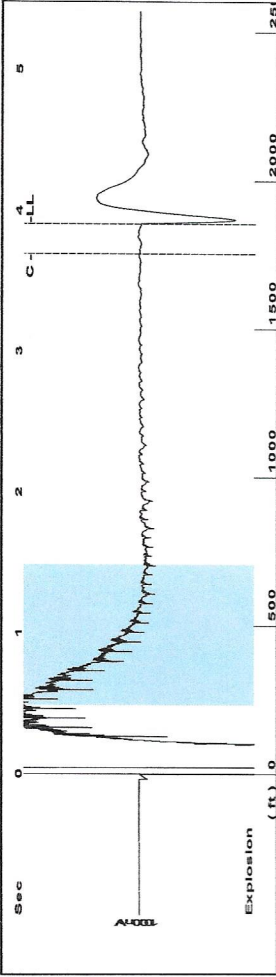
UNDER PENALTY OF PERJURY I HEREBY ATTEST THAT THE INFORMATION CONTAINED HEREIN IS TRUE AND CORRECT TO THE BEST OF MY KNOWLEDGE

Submitted Electronically

Do NOT Write in This Space - KCC USE ONLY
Date Tested: Results: Date Plugged: Date Repaired: Date Put Back in Service:
Review Completed by: Comments:
TA Approved: Yes Denied Date:

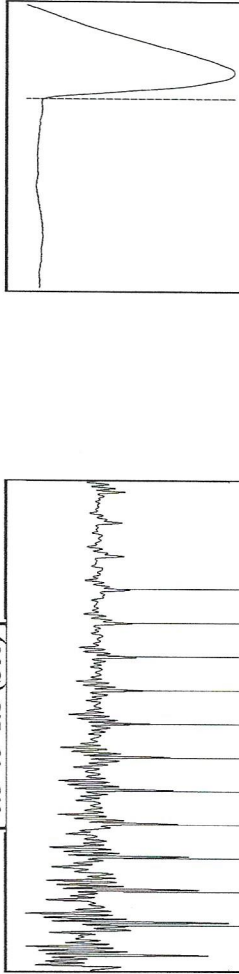
Mail to the Appropriate KCC Conservation Office:

Table with 2 columns: Office Address, Phone. Rows for District Office #1, #2, #3, #4.



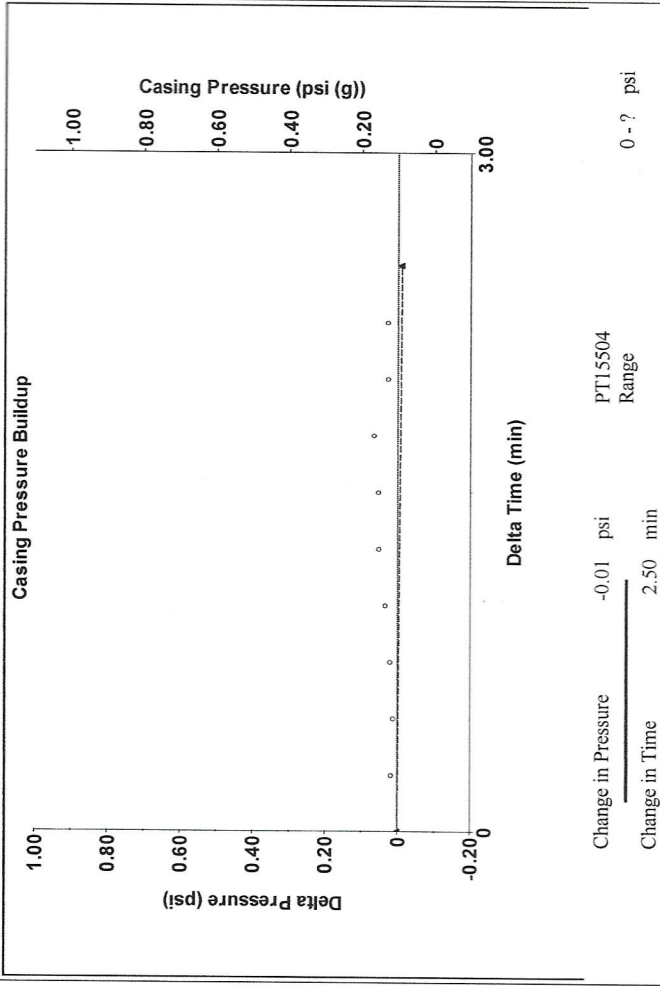
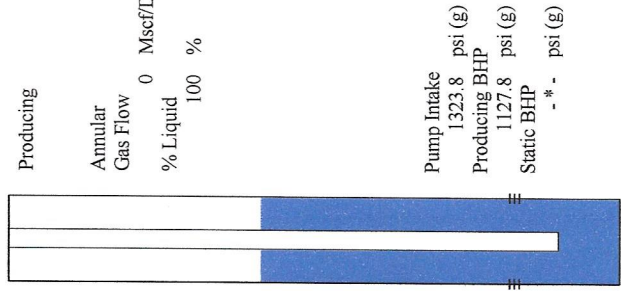
Filter Type High Pass Automatic Collar Count Yes Time 3.909 sec
 Manual Acoustic Veloc 17.031 ft/s Manual JTS/sec 14.556 Joints 58.9122 Jts
 Depth 1855.74 ft

[0.5 to 1.5 (Sec)]

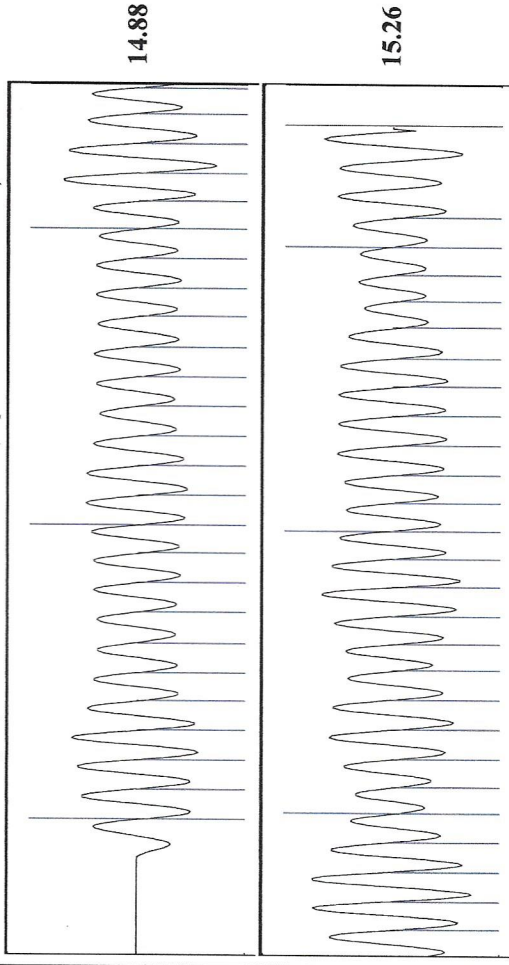


Analysis Method: Automatic

Production	Potential	Casing Pressure	0.1 psi (g)
Oil 0	- * - BBL/D	Casing Pressure Buildup	-0.011 psi
Water 0	- * - BBL/D	Gas/Liquid Interface Pressure	1.1 psi (g)
Gas 0.0	- * - Mscf/D	Vogel	- * -
IPR Method		Production Efficiency	0.0
PBHP/SBHP		Liquid Level Depth	1855.74 ft
Oil 39 deg.API		Pump Intake Depth	4765.00 ft
Water 1.05 Sp.Gr:H2O		Formation Depth	4334.00 ft
Gas 1.02 Sp.Gr:AIR		Acoustic Velocity	949.468 ft/s
Formation Submergence		Pump Intake	1323.8 psi (g)
Total Gaseous Liquid Column HT (TV D)	2909 ft	Producing BHP	1127.8 psi (g)
Equivalent Gas Free Liquid HT (TV D)	2909 ft	Static BHP	- * - psi (g)
Acoustic Test			



Change in Pressure -0.01 psi
 Change in Time 2.50 min
 PT15504 Range



Acoustic Velocity 949.468 ft/s Joints counted 51
 Joints Per Second 15.0709 Joints to liquid level 58.9122
 Depth to liquid level 1855.74 ft Filter Width 16.556
 Automatic Collar Count Yes Time to 1st Collar 0.312 3.696

December 13, 2019

Chris Peters
Hartman Oil Co., Inc.
10500 E BERKELEY SQ PKWY STE 100
WICHITA, KS 67206-6816

Re: Temporary Abandonment
API 15-055-20102-00-00
GRAVES VANCE 2
NW/4 Sec.09-22S-33W
Finney County, Kansas

Dear Chris Peters:

"Your temporary abandonment (TA) application for the well listed above has been approved. In accordance with K.A.R. 82-3-111 the TA status of this well will expire 12/13/2020.

- * If you return this well to service or plug it, please notify the District Office.
- * If you sell this well you are required to file a Transfer of Operator form, T-1.
- * If the well will remain temporarily abandoned, you must submit a new TA application, CP-111, before 12/13/2020.

You may contact me at the number above if you have questions.

Very truly yours,

Michael Maier"