

KANSAS CORPORATION COMMISSION  
OIL & GAS CONSERVATION DIVISION

Form must be Typed

Form must be signed

All blanks must be complete

## TEMPORARY ABANDONMENT WELL APPLICATION

OPERATOR: License# \_\_\_\_\_

Name: \_\_\_\_\_

Address 1: \_\_\_\_\_

Address 2: \_\_\_\_\_

City: \_\_\_\_\_ State: \_\_\_\_\_ Zip: \_\_\_\_\_ + \_\_\_\_\_

Contact Person: \_\_\_\_\_

Phone: ( \_\_\_\_\_ ) \_\_\_\_\_

Contact Person Email: \_\_\_\_\_

Field Contact Person: \_\_\_\_\_

Field Contact Person Phone: ( \_\_\_\_\_ ) \_\_\_\_\_

API No. 15- \_\_\_\_\_

Spot Description: \_\_\_\_\_

\_\_\_\_ - \_\_\_\_ - \_\_\_\_ - \_\_\_\_ Sec. \_\_\_\_\_ Twp. \_\_\_\_\_ S. R. \_\_\_\_\_ ☐ E ☐ W\_\_\_\_\_ feet from ☐ N / ☐ S Line of Section\_\_\_\_\_ feet from ☐ E / ☐ W Line of Section

GPS Location: Lat: \_\_\_\_\_, Long: \_\_\_\_\_

Datum: ☐ NAD27 ☐ NAD83 ☐ WGS84County: \_\_\_\_\_ Elevation: \_\_\_\_\_ ☐ GL ☐ KB

Lease Name: \_\_\_\_\_ Well #: \_\_\_\_\_

Well Type: (check one) ☐ Oil ☐ Gas ☐ OG ☐ WSW ☐ Other: \_\_\_\_\_☐ SWD Permit #: \_\_\_\_\_ ☐ ENHR Permit #: \_\_\_\_\_☐ Gas Storage Permit #: \_\_\_\_\_

Spud Date: \_\_\_\_\_ Date Shut-In: \_\_\_\_\_

	Conductor	Surface	Production	Intermediate	Liner	Tubing
Size						
Setting Depth						
Amount of Cement						
Top of Cement						
Bottom of Cement						

Casing Fluid Level from Surface: \_\_\_\_\_ How Determined? \_\_\_\_\_ Date: \_\_\_\_\_

Casing Squeeze(s): \_\_\_\_\_ to \_\_\_\_\_ w / \_\_\_\_\_ sacks of cement, \_\_\_\_\_ to \_\_\_\_\_ w / \_\_\_\_\_ sacks of cement. Date: \_\_\_\_\_

Do you have a valid Oil & Gas Lease? ☐ Yes ☐ NoDepth and Type: ☐ Junk in Hole at \_\_\_\_\_ ☐ Tools in Hole at \_\_\_\_\_ Casing Leaks: ☐ Yes ☐ No Depth of casing leak(s): \_\_\_\_\_Type Completion: ☐ ALT. I ☐ ALT. II Depth of: ☐ DV Tool: \_\_\_\_\_ w / \_\_\_\_\_ sacks of cement ☐ Port Collar: \_\_\_\_\_ w / \_\_\_\_\_ sack of cement

Packer Type: \_\_\_\_\_ Size: \_\_\_\_\_ Inch Set at: \_\_\_\_\_ Feet

Total Depth: \_\_\_\_\_ Plug Back Depth: \_\_\_\_\_ Plug Back Method: \_\_\_\_\_

**Geological Data:**

Formation Name	Formation Top	Formation Base	Completion Information
1. _____	At: _____ to _____ Feet	Perforation Interval _____ to _____ Feet or Open Hole Interval _____ to _____ Feet	
2. _____	At: _____ to _____ Feet	Perforation Interval _____ to _____ Feet or Open Hole Interval _____ to _____ Feet	

UNDER PENALTY OF PERJURY I HEREBY ATTEST THAT THE INFORMATION CONTAINED HEREIN IS TRUE AND CORRECT TO THE BEST OF MY KNOWLEDGE

Submitted Electronically

**Do NOT Write in This  
Space - KCC USE ONLY**

Date Tested: \_\_\_\_\_ Results: \_\_\_\_\_ Date Plugged: \_\_\_\_\_ Date Repaired: \_\_\_\_\_ Date Put Back in Service: \_\_\_\_\_

Review Completed by: \_\_\_\_\_ Comments: \_\_\_\_\_

TA Approved: ☐ Yes ☐ Denied Date: \_\_\_\_\_

## Mail to the Appropriate KCC Conservation Office:

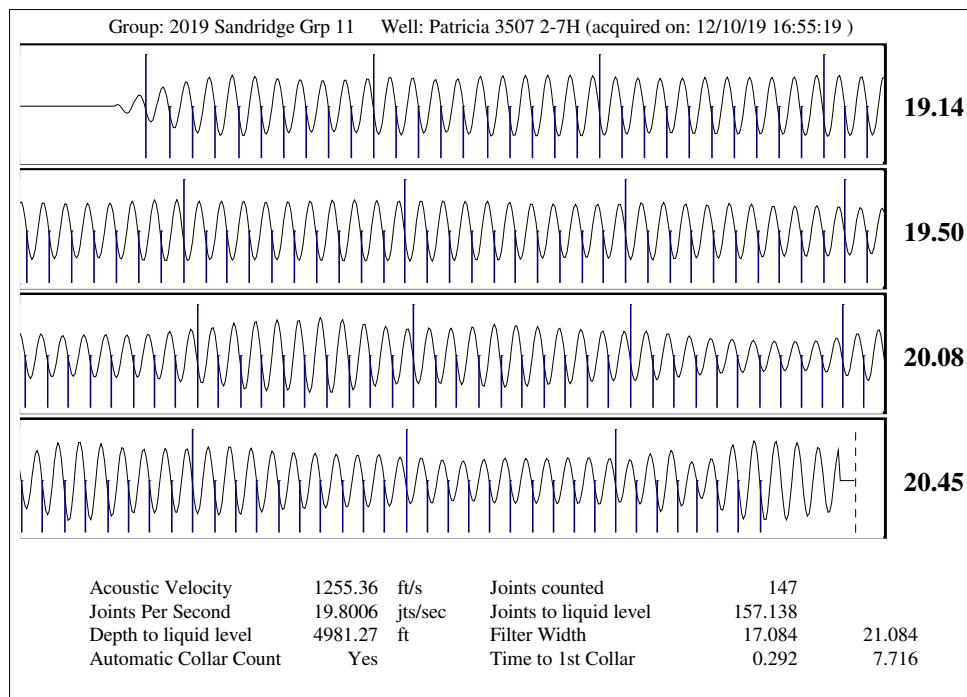
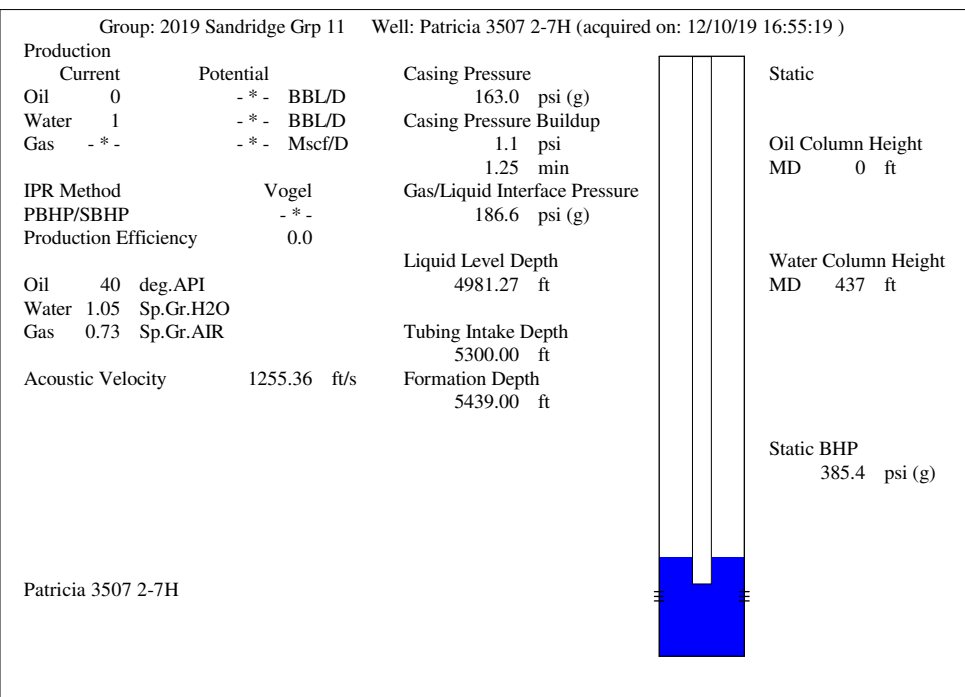
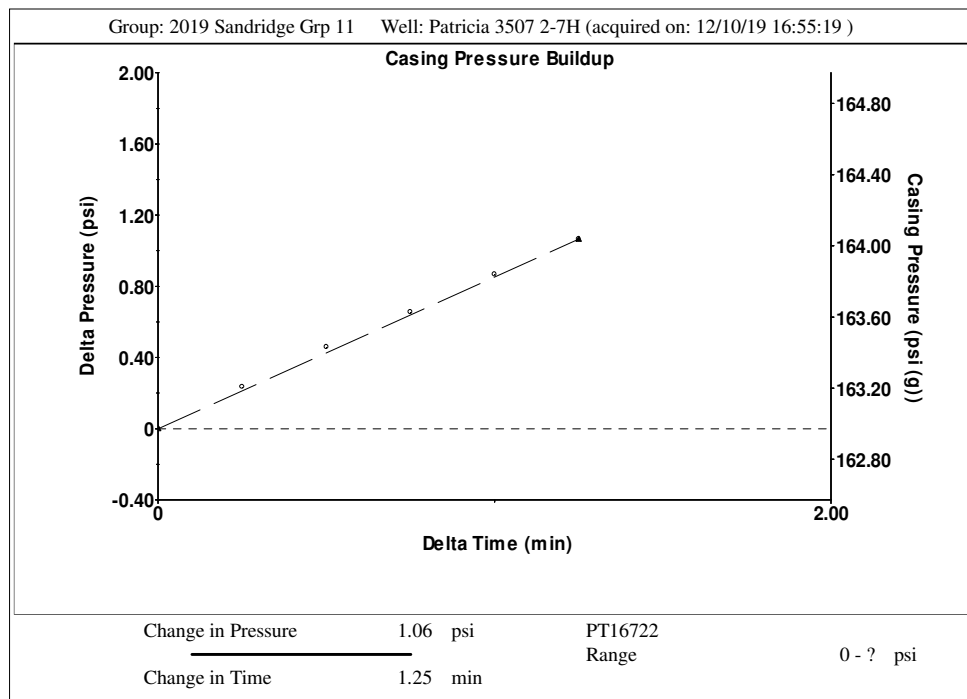
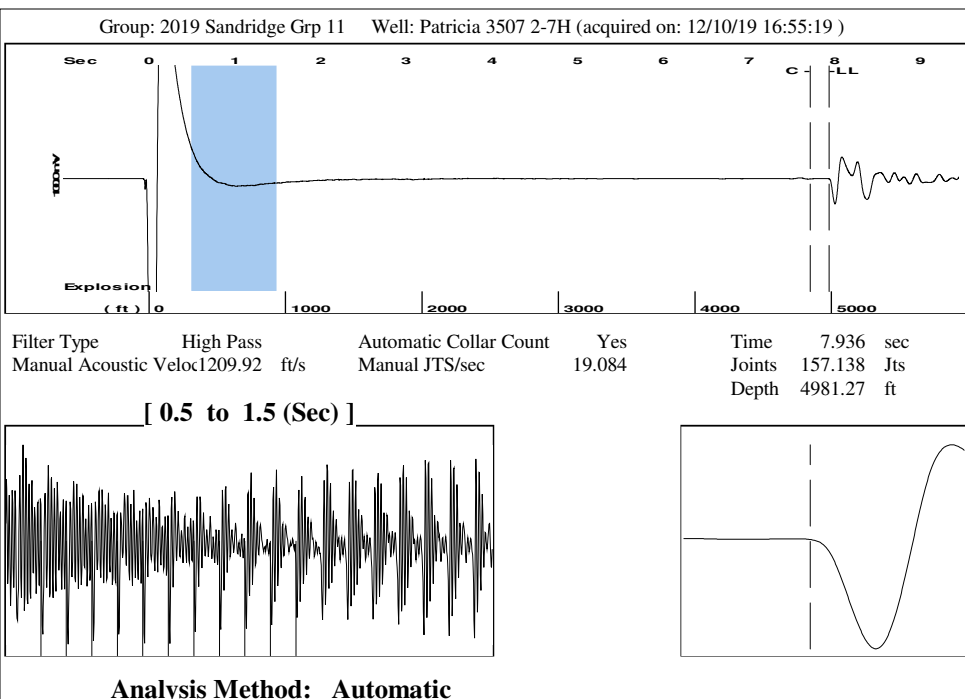
	KCC District Office #1 - 210 E. Frontview, Suite A, Dodge City, KS 67801	Phone 620.682.7933
	KCC District Office #2 - 3450 N. Rock Road, Building 600, Suite 601, Wichita, KS 67226	Phone 316.337.7400
	KCC District Office #3 - 137 E. 21st St., Chanute, KS 66720	Phone 620.902.6450
	KCC District Office #4 - 2301 E. 13th Street, Hays, KS 67601-2651	Phone 785.261.6250

General	
Well ID	125505
Well	Patricia 3507 2-7H
Company	Sandridge
Operator	- * -
Lease Name	Patricia 3507 2-7H
Elevation	1332.00 ft
Production Method	Other
Dataset Description	
Comment	

Surface Unit	
Manufacturer	- * -
Unit Class	Conventional
Unit API Number	- * -
Measured Stroke Length	- * - in
Rotation	CW
Counter Balance Effect (Weights Level)	- * - Klb
Weight Of Counter Weights	2000 lb
Prime Mover	
Motor Type	Electric
Rated HP	- * - HP
Run Time	24 hr/day
MFG/Comment	- * -
Electric Motor Parameters	
Rated Full Load AMPS	- * -
Rated Full Load RPM	- * -
Synchronous RPM	1200
Voltage	- * -
Hertz	60
Phase	3
Power Consumption	5
Power Demand	8 \$/KW

<b>Tubulars</b>			<b>Pump</b>		
Tubing OD	2.875	in	Plunger Diameter	- * -	in
Casing OD	7.000	in	Pump Intake Depth	5300.00	ft
Average Joint Length	31.700	ft	**Total Rod Length < Pump Depth		
Anchor Depth	- * -	ft			
Kelly Bushing	20.50	ft			
<b>Rod String</b>			<b>Polished Rod</b>		
			Polished Rod Diameter	- * -	in
			</		

Conditions	
Pressure	
Static BHP	385.4 psi (g)
Static BHP Method	Acoustic
Static BHP Date	12/10/2019
Producing BHP	- * - psi (g)
Producing BHP Method	- * -
Producing BHP Date	- * -
Formation Depth	5439.00 ft
Surface Producing Pressures	
Tubing Pressure	- * - psi (g)
Casing Pressure	163.0 psi (g)
Casing Pressure Buildup	
Change in Pressure	1.1 psi
Over Change in Time	1.25 min
Production	
Oil Production	0 BBL/D
Water Production	1 BBL/D
Gas Production	- * - Mscf/D
Production Date	12/10/2019
Temperatures	
Surface Temperature	70 deg F
Bottomhole Temperature	150 deg F
Fluid Properties	
Oil API	40 deg.API
Water Specific Gravity	1.05 Sp.Gr.H2O



January 06, 2020

Diane Overbey  
SandRidge Exploration and Production LLC  
123 ROBERT S. KERR AVE  
OKLAHOMA CITY, OK 73102-6406

Re: Temporary Abandonment  
API 15-077-21954-02-00  
PATRICIA 3507 2-7H ST1  
NW/4 Sec.07-35S-07W  
Harper County, Kansas

Dear Diane Overbey:

"Your temporary abandonment (TA) application for the well listed above has been approved. In accordance with K.A.R. 82-3-111 the TA status of this well will expire 01/06/2021.

- \* If you return this well to service or plug it, please notify the District Office.
- \* If you sell this well you are required to file a Transfer of Operator form, T-1.
- \* If the well will remain temporarily abandoned, you must submit a new TA application, CP-111, before 01/06/2021.

You may contact me at the number above if you have questions.

Very truly yours,

Steve VanGieson"