

KANSAS CORPORATION COMMISSION
OIL & GAS CONSERVATION DIVISION

TEMPORARY ABANDONMENT WELL APPLICATION

OPERATOR: License#
Name:
Address 1:
Address 2:
City: State: Zip:
Contact Person:
Phone:
Contact Person Email:
Field Contact Person:
Field Contact Person Phone:

API No. 15-
Spot Description:
Sec. Twp. S. R.
GPS Location: Lat: Long:
Datum: NAD27 NAD83 WGS84
County: Elevation:
Lease Name: Well #:
Well Type: Oil Gas OG WSW Other:
SWD Permit #: ENHR Permit #:
Gas Storage Permit #:
Spud Date: Date Shut-In:

Table with 7 columns: Conductor, Surface, Production, Intermediate, Liner, Tubing. Rows include Size, Setting Depth, Amount of Cement, Top of Cement, Bottom of Cement.

Casing Fluid Level from Surface: How Determined? Date:

Casing Squeeze(s): (top) to (bottom) w / sacks of cement, (top) to (bottom) w / sacks of cement. Date:

Do you have a valid Oil & Gas Lease? Yes No

Depth and Type: Junk in Hole at (depth) Tools in Hole at (depth) Casing Leaks: Yes No Depth of casing leak(s):

Type Completion: ALT. I ALT. II Depth of: DV Tool: (depth) w / sacks of cement Port Collar: (depth) w / sack of cement

Packer Type: Size: Inch Set at: Feet

Total Depth: Plug Back Depth: Plug Back Method:

Geological Data:

Table with 4 columns: Formation Name, Formation Top, Formation Base, Completion Information. Rows 1 and 2.

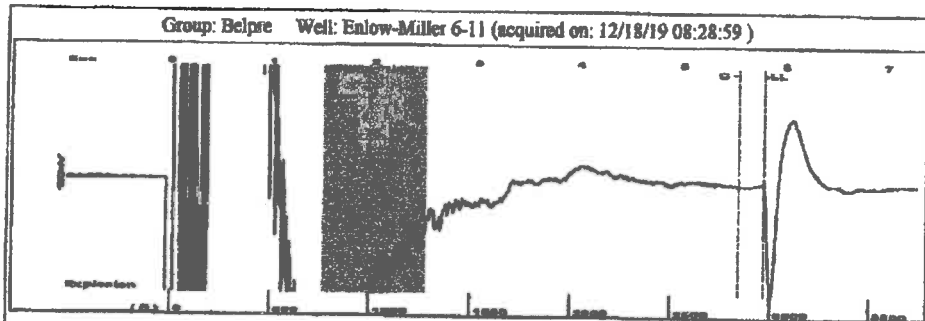
UNDER PENALTY OF PERJURY I HEREBY ATTEST THAT THE INFORMATION CONTAINED HEREIN IS TRUE AND CORRECT TO THE BEST OF MY KNOWLEDGE

Submitted Electronically

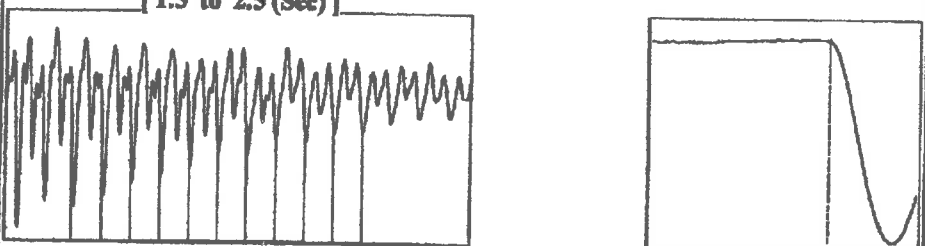
Form with fields: Do NOT Write in This Space - KCC USE ONLY, Date Tested, Results, Date Plugged, Date Repaired, Date Put Back in Service, Review Completed by, Comments, TA Approved: Yes Denied, Date.

Mail to the Appropriate KCC Conservation Office:

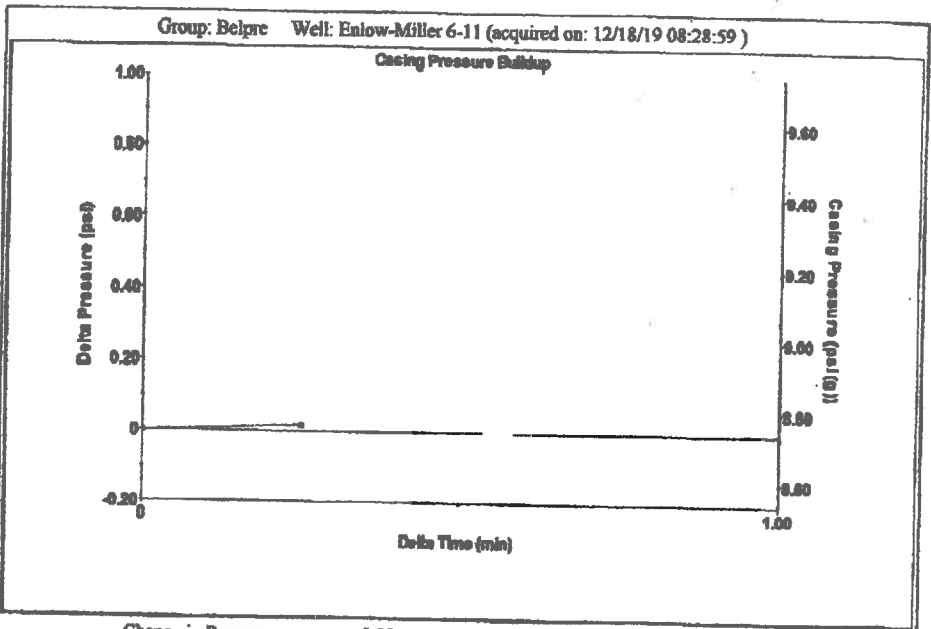
Table with 3 columns: District Office #, Address, Phone. Rows 1-4.



Filter Type High Pass Automatic Collar Count Yes Time 5.786 sec
 Manual Acoustic Velo 1004.47 ft/s Manual JTS/sec 15.949 Joints 94.2417 Jts
 Depth 2967.67 ft



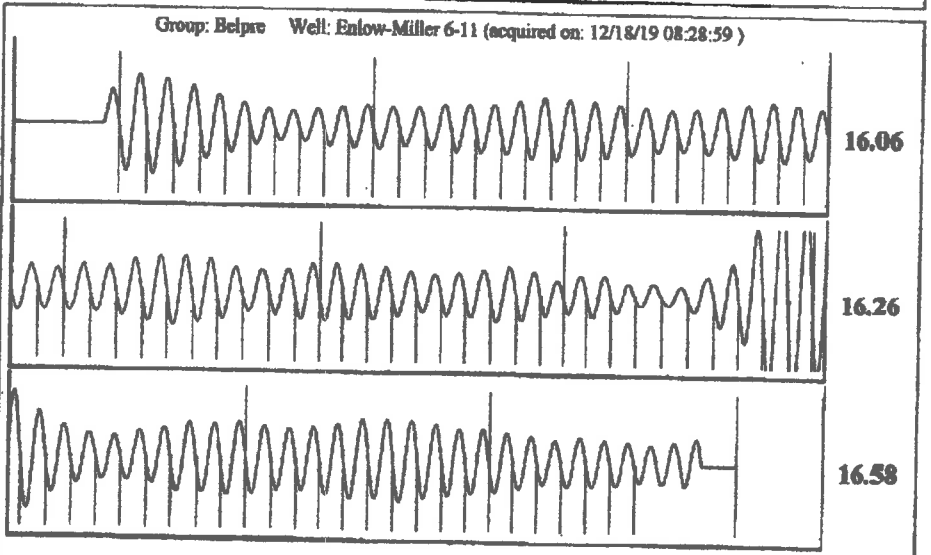
Analysis Method: Automatic



Change in Pressure 0.02 psi FT13440
 Change in Time 0.25 min Range 0 - 7 psi

Group: Belpre Well: Enlow-Miller 6-11 (acquired on: 12/18/19 08:28:59)

Production Current	Potential	Casing Pressure	Producing
Oil -*- BBL/D	-*- BBL/D	8.7 psi (g)	
Water -*- BBL/D	-*- BBL/D	Casing Pressure Buildup	Annular Gas Flow
Gas -*- Msc/D	-*- Msc/D	0.0 psi	1 Msc/D
		0.25 min	% Liquid
IPR Method Vogel		Gas/Liquid Interface Pressure	92 %
PBHP/SBHP -*-		11.1 psi (g)	
Production Efficiency 0.0			
Oil 40 deg.API		Liquid Level Depth	
Water 1.05 Sp.Gr.H2O		2967.67 ft	
Gas 0.95 Sp.Gr.AIR		Pump Intake Depth	
		4378.00 ft	
Acoustic Velocity 1025.81 ft/s		Formation Depth	
		4344.00 ft	
Formation Submergence		Pump Intake	
Total Gaseous Liquid Column HT (TVD) 1410 ft		449.9 psi (g)	
Equivalent Gas Free Liquid HT (TVD) 1301 ft		Producing BHP	
		438.7 psi (g)	
Acoustic Test		Static BHP	
		-*- psi (g)	



Acoustic Velocity 1025.81 ft/s Joints counted 86
 Joints Per Second 16.2879 Joints to liquid level 94.2417
 Depth to liquid level 2967.67 ft Filter Width 13.949
 Automatic Collar Count Yes Time to 1st Collar 0.256 17.949 5.536

December 19, 2019

Loveness Mpanje
F. G. Holl Company L.L.C.
9431 E CENTRAL STE 100
WICHITA, KS 67206-2563

Re: Temporary Abandonment
API 15-047-21251-00-00
ENLOW-MILLER 6-11
SE/4 Sec.11-24S-17W
Edwards County, Kansas

Dear Loveness Mpanje:

"Your temporary abandonment (TA) application for the well listed above has been approved. In accordance with K.A.R. 82-3-111 the TA status of this well will expire 12/19/2020.

- * If you return this well to service or plug it, please notify the District Office.
- * If you sell this well you are required to file a Transfer of Operator form, T-1.
- * If the well will remain temporarily abandoned, you must submit a new TA application, CP-111, before 12/19/2020.

You may contact me at the number above if you have questions.

Very truly yours,

Scott Alberg"