

KANSAS CORPORATION COMMISSION
OIL & GAS CONSERVATION DIVISION

TEMPORARY ABANDONMENT WELL APPLICATION

OPERATOR: License#
Name:
Address 1:
Address 2:
City: State: Zip:
Contact Person:
Phone:
Contact Person Email:
Field Contact Person:
Field Contact Person Phone:

API No. 15-
Spot Description:
Sec. Twp. S. R.
feet from N / S Line of Section
feet from E / W Line of Section
GPS Location: Lat: , Long:
Datum: NAD27 NAD83 WGS84
County: Elevation: GL KB
Lease Name: Well #:
Well Type: Oil Gas OG WSW Other:
SWD Permit #: ENHR Permit #:
Gas Storage Permit #:
Spud Date: Date Shut-In:

Table with 7 columns: Conductor, Surface, Production, Intermediate, Liner, Tubing. Rows include Size, Setting Depth, Amount of Cement, Top of Cement, Bottom of Cement.

Casing Fluid Level from Surface: How Determined? Date:
Casing Squeeze(s): to w / sacks of cement, to w / sacks of cement. Date:
Do you have a valid Oil & Gas Lease? Yes No
Depth and Type: Junk in Hole at Tools in Hole at Casing Leaks: Yes No Depth of casing leak(s):
Type Completion: ALT. I ALT. II Depth of: DV Tool: w / sacks of cement Port Collar: w / sack of cement
Packer Type: Size: Inch Set at: Feet
Total Depth: Plug Back Depth: Plug Back Method:

Geological Data:

Table with 4 columns: Formation Name, Formation Top, Formation Base, Completion Information. Rows 1 and 2.

UNDER PENALTY OF PERJURY I HEREBY ATTEST THAT THE INFORMATION CONTAINED HEREIN IS TRUE AND CORRECT TO THE BEST OF MY KNOWLEDGE

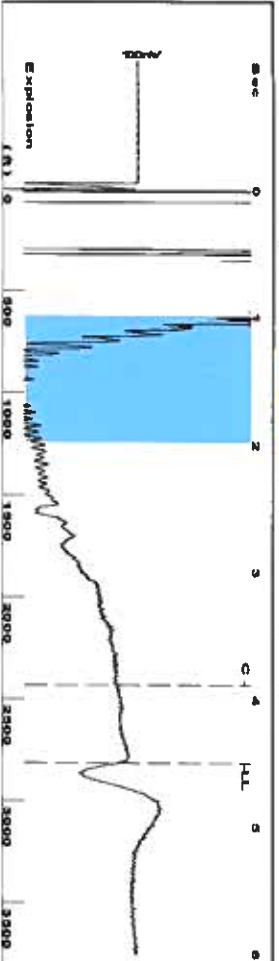
Submitted Electronically

Do NOT Write in This Space - KCC USE ONLY
Date Tested: Results: Date Plugged: Date Repaired: Date Put Back in Service:
Review Completed by: Comments:
TA Approved: Yes Denied Date:

Mail to the Appropriate KCC Conservation Office:

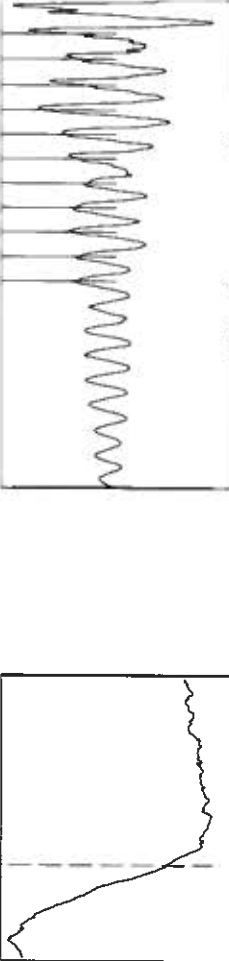
Table with 2 columns: Office Address, Phone. Rows for District Office #1, #2, #3, #4.

Group: TAD Well: Helmley A-2 (acquired on: 12/02/19 09:26:38 )



Filter Type High Pass Automatic Collar Count Yes  
 Manual Acoustic Velo 1252.96 ft/s Manual JTS/sec 19.7628  
 Time 4.503 sec  
 Joints 88.7106 Jts  
 Depth 2812.13 ft

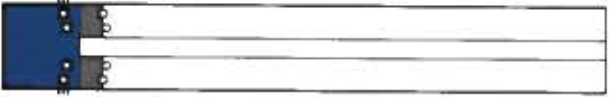
[ 1.0 to 2.0 (Sec) ]



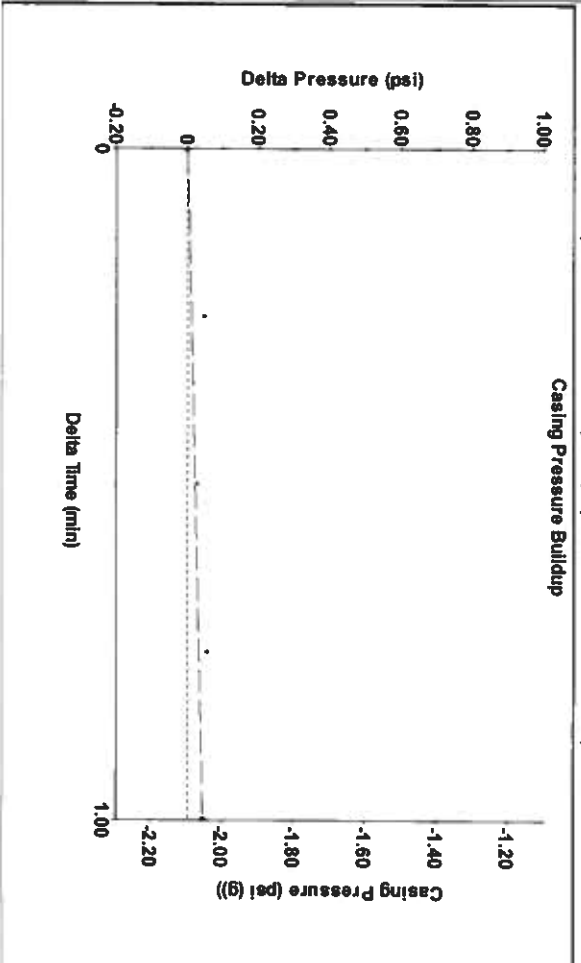
**Analysis Method: Automatic**

Group: TAD Well: Helmley A-2 (acquired on: 12/02/19 09:26:38 )

Production	Potential	Casing Pressure	Producing
Current	BBL/D	-2.1 psi (g)	Annular
Oil	BBL/D	Casing Pressure Buildup	Gas Flow
Water	Mscf/D	0.043 psi	% Liquid
Gas	Mscf/D	1.00 min	Liquid Stream
IPR Method	Vogel	Gas/Liquid Interface Pressure	Below Tubing
PBH/PSBHP	0.0	-1.2 psi (g)	Oil
Production Efficiency			Water
Oil 40 deg API		Liquid Level Depth	Water
Water 1.05 Sp.Gr.H2O		2812.13 ft	Liquid Below Tubing
Gas 0.76 Sp.Gr.AIR		Pump Intake Depth	96 %
Acoustic Velocity		2961.00 ft	Pump Intake
		Formation Depth	47.3 psi (g)
		3065.00 ft	Producing BHP
			92.7 psi (g)
			Static BHP
			psi (g)

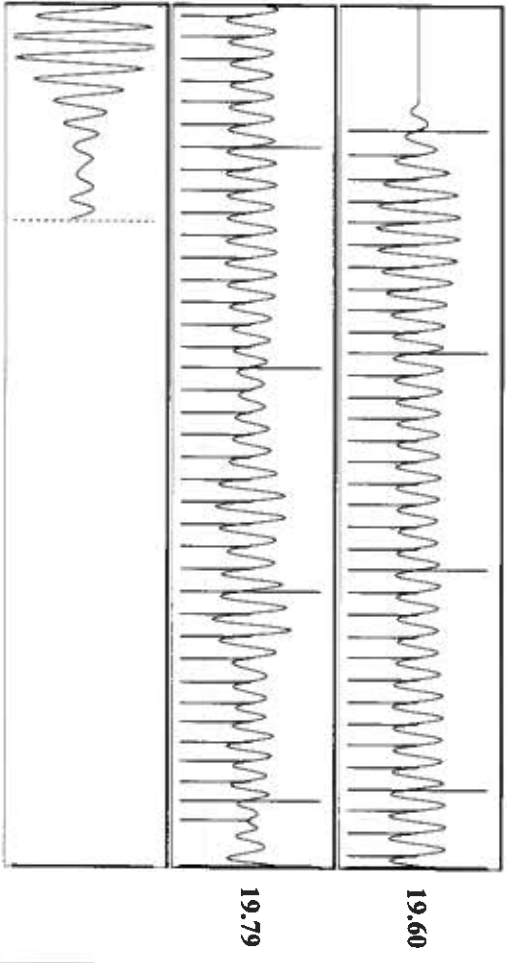


Group: TAD Well: Helmley A-2 (acquired on: 12/02/19 09:26:38 )



Change in Pressure 0.04 psi PT8197  
 Change in Time 1.00 min Range 0.7 psi

Group: TAD Well: Helmley A-2 (acquired on: 12/02/19 09:26:38 )



Acoustic Velocity 1249 ft/s Joints counted 71  
 Joints Per Second 19.7003 Jts/sec Joints to liquid level 88.7106  
 Depth to liquid level 2812.13 ft Filter Width 17.7628  
 Automatic Collar Count Yes Time to 1st Collar 0.288 21.7628 3.892

December 23, 2019

Katherine McClurkan  
Merit Energy Company, LLC  
13727 Noel Road, Suite 1200  
Dallas, TX 75240-7362

Re: Temporary Abandonment  
API 15-067-20405-00-00  
Helmley A 2  
NE/4 Sec.25-28S-36W  
Grant County, Kansas

Dear Katherine McClurkan:

"Your temporary abandonment (TA) application for the well listed above has been approved. In accordance with K.A.R. 82-3-111 the TA status of this well will expire 12/23/2020.

- \* If you return this well to service or plug it, please notify the District Office.
- \* If you sell this well you are required to file a Transfer of Operator form, T-1.
- \* If the well will remain temporarily abandoned, you must submit a new TA application, CP-111, before 12/23/2020.

You may contact me at the number above if you have questions.

Very truly yours,

Scott Alberg"