

WELLSITE GEOLOGIST'S REPORT

J. R. Husted
Consulting Geologist



Scale 1:240 (5"=100') Imperial
Measured Depth Log

Well Name: Calcara No. 2-19
Location: SEC 19-T19S-R14W
License Number: 15-009-26,187-0000
Spud Date:
Surface Coordinates: 1650' FSL, 770' FEL, 110' W of C S/2 NE SE
Region: Barton
Drilling Completed:

Bottom Hole Vertical Hole
Coordinates:
Ground Elevation (ft): 1902' K.B. Elevation (ft): 1911'
Logged Interval (ft): To: Total Depth (ft):
Formation: Kansas City, Arbuckle
Type of Drilling Fluid: Starch, Chemical Premix (Displaced)

Printed by WellSight Log Viewer from WellSight Systems 1-800-447-1534 www.WellSight.com

OPERATOR:

Company: F.G. HOLL COMPANY LLC
Address: 9431 E. CENTRAL STE 100
WICHITA, KANSAS 67206-2563

DRILLING CONTRACTOR:

Duke Drilling Company, Rig #7
Drill Pipe 4.5 X H; DRILL COLLARS 6.25 x 2.25, 494' BHA
BIT #1: 7-7/8" PDC Q506F; WOB: 12-14; RPM 110; KELLY BUSHING 13' ABOVE GROUND
LEVEL-MIRT-JULY-2011
TOTAL DEPTH ROTARY 6750'/TOTAL LOG DEPTH 6747'

SURFACE CASING:

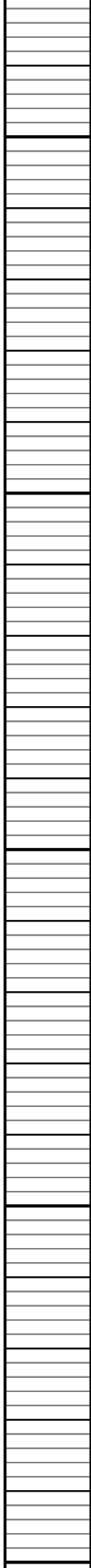
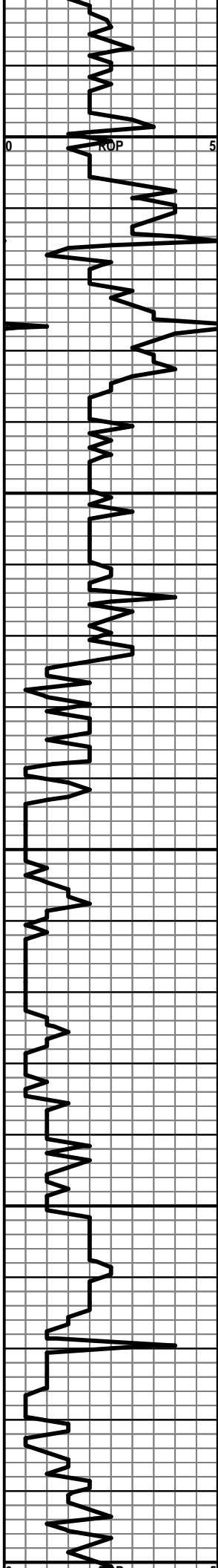
CONDUCTOR CASING 13 3/8 @ 34.5 LB SET AT 148 FT TOTAL CEMENT 160 SACS-SURFACE CASING 8 5/8 IN
WT. 231 LB SET AT 868 FT WITH 400 SACS OF CEMENT-PRODUCTION CASING 4 1/2 IN WT. 10.5 LB SET AT
6745 FT WITH CEMENT 275 SACS

CIRCULATION SYSTEM:

NATIONAL 500, DUPLEX 6.0 X 15, 56 SPM, 343 GPM, SPP: 600 PSI; STEELE PITS; MUD-CO/SERVICE MUD
INC. BRAD BORTZ

GAS DETECTION SYSTEM:

MBC WELL LOGGING AND LEASING
ANALOG HOTWIRE AND CHROMATOGRAPH



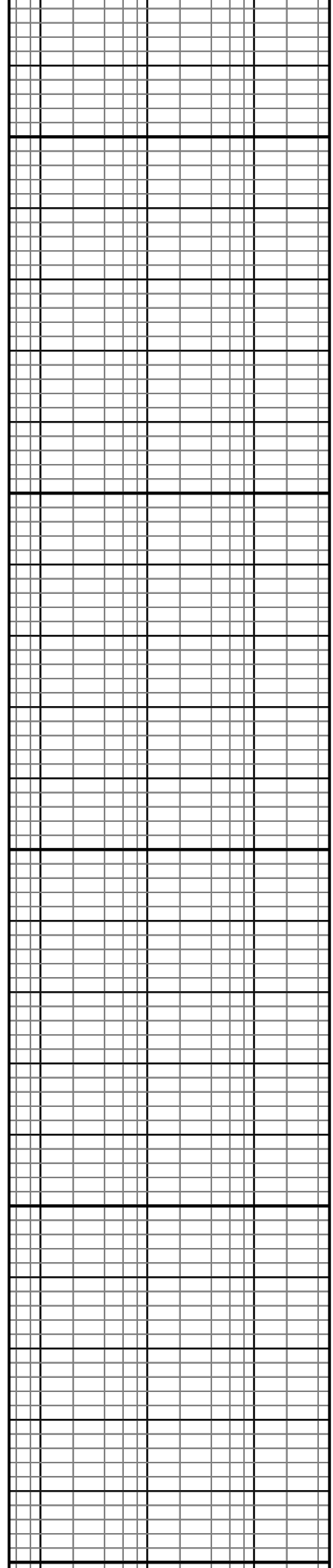
1800

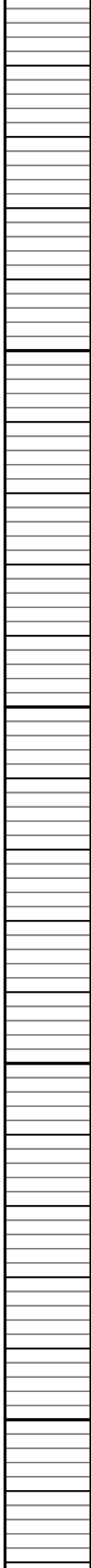
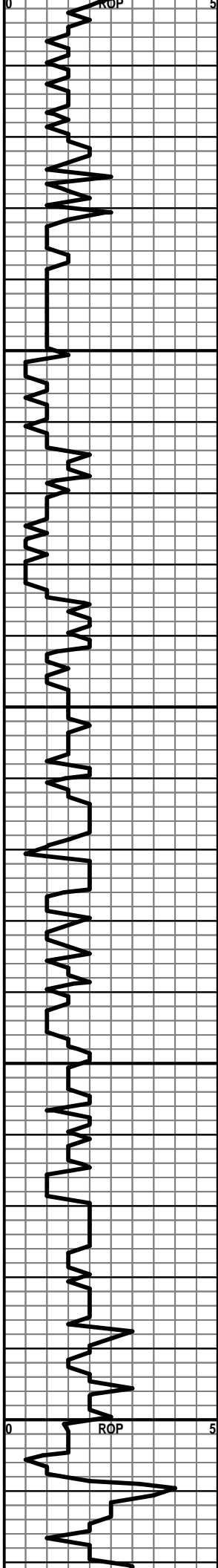
1850

1900

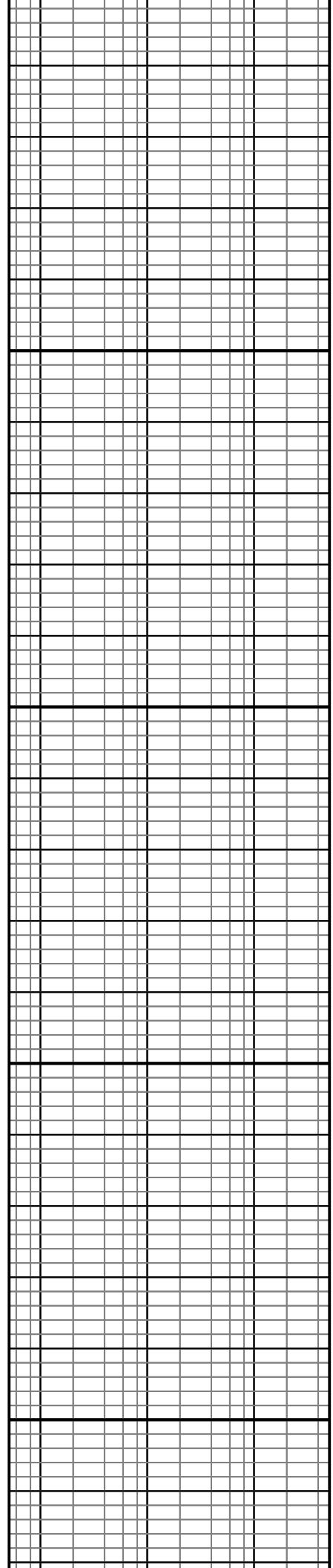
1950

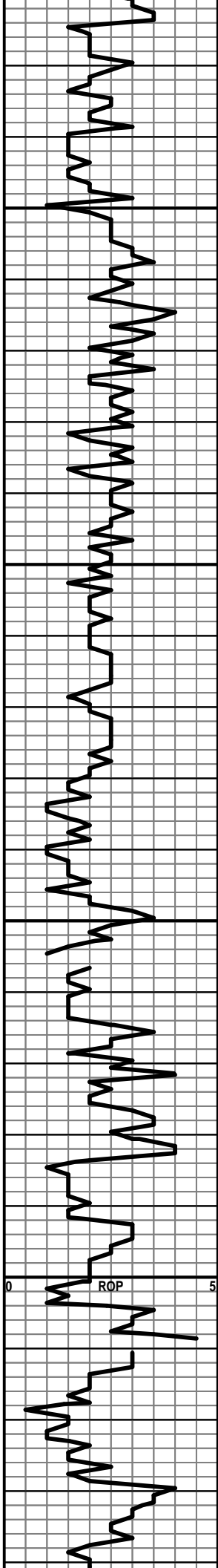
2000





2200 2150 2100 2050



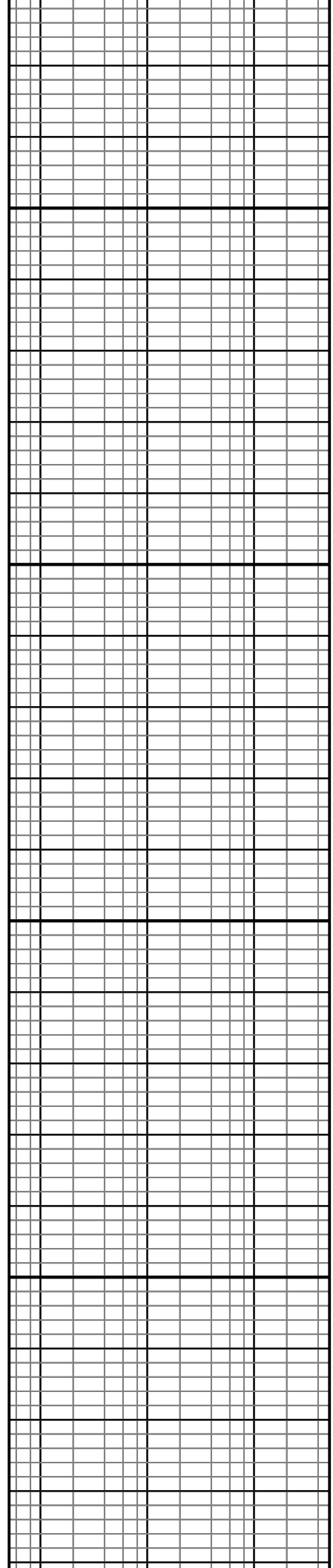


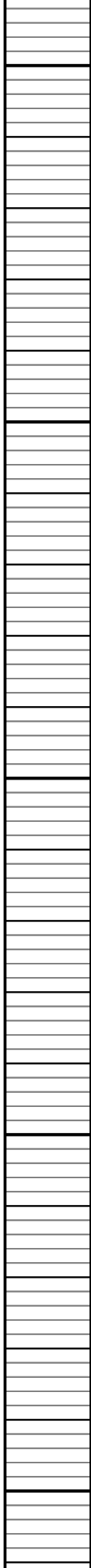
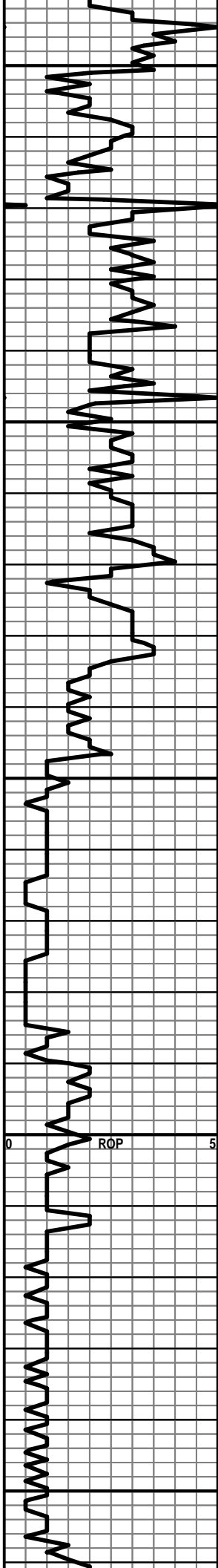
2250

2300

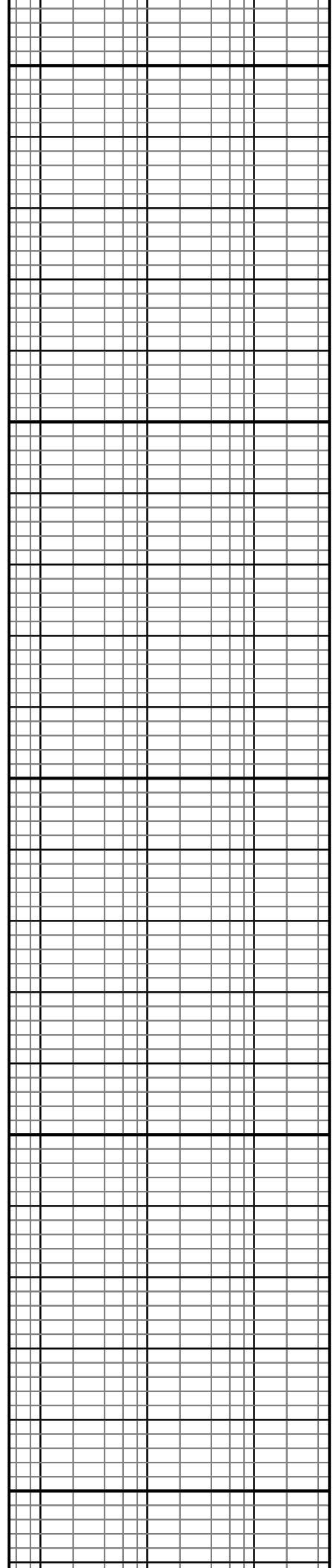
2350

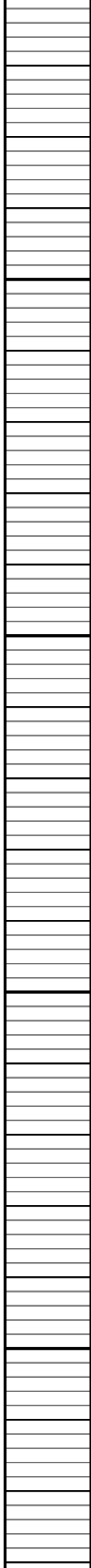
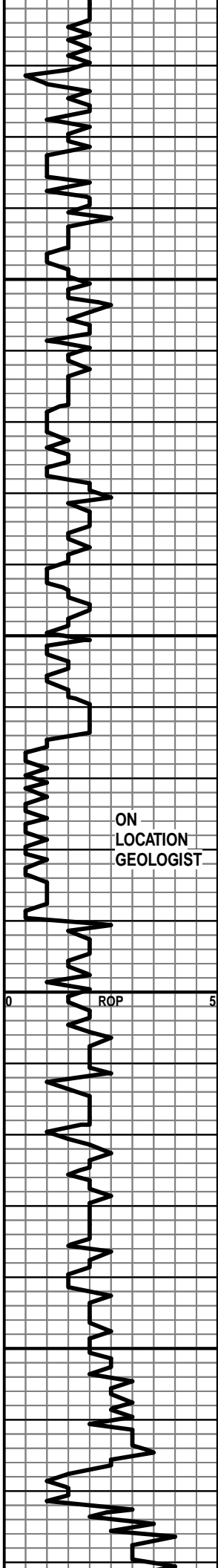
2400





2650 2600 2550 2500 2450





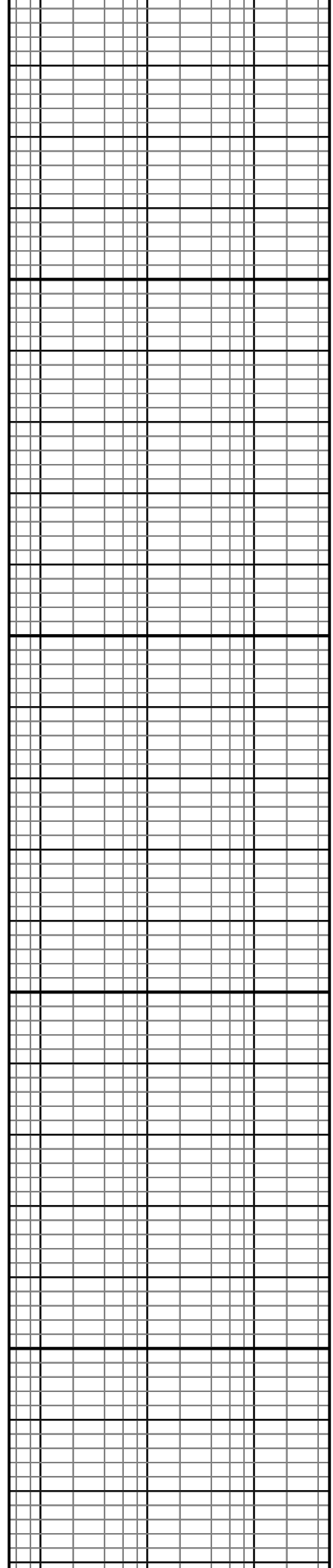
2700

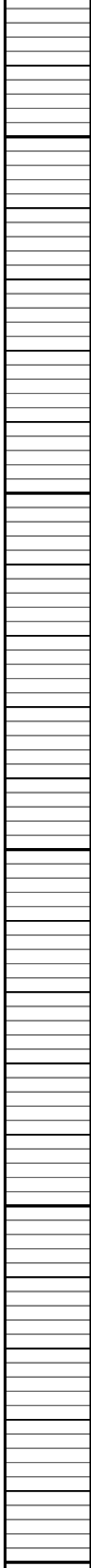
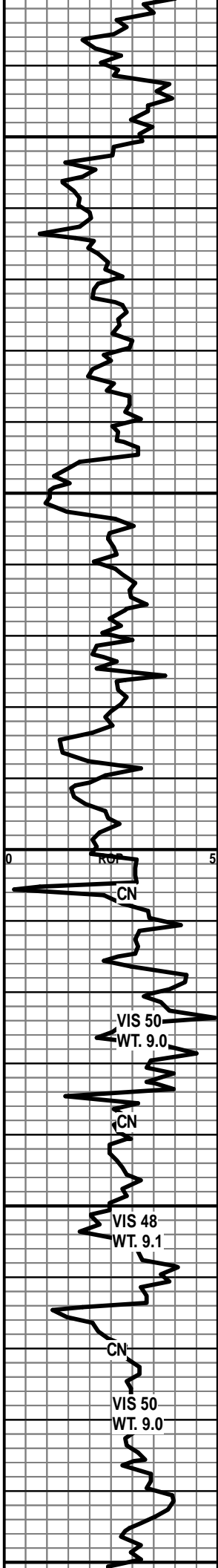
2750

2800

2850

TOPEKA 2790' (879')





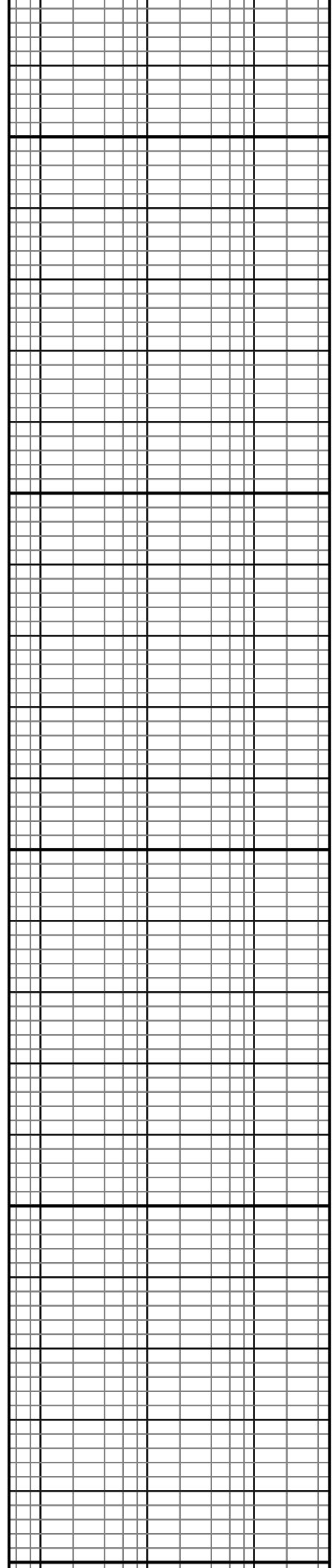
2900

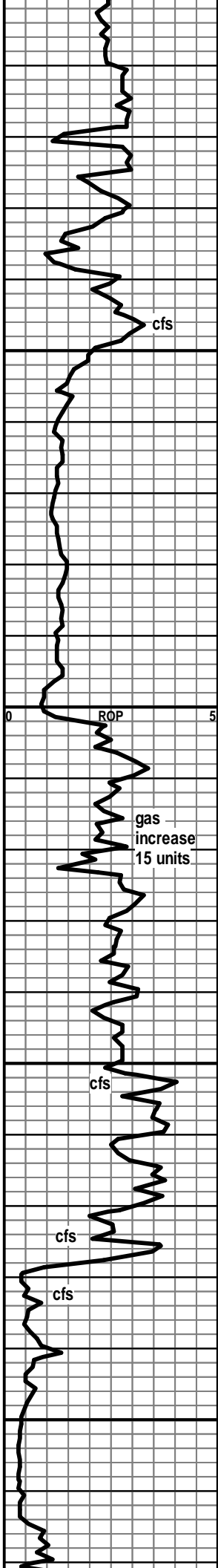
2950

3000

3050

100





3
3150
3200
3250
3300

HEEBNER 3119' (-1208')

KB=1911'

SH-BLK-CARB

TORONTO 3136' (-1225')

Is-crm-f-grn-brit-foss frags-tr lt brn stn-scatt flor-no vis
cut-15 unit gk
Is-tn-f-xln-hd-tr vug /frac por-spotted flor-flush cut

DOUGLAS SH 3152' (-1241')

sh-lt gry-silty-tr of foss/shell

sh-gry-silty-tr blk min

BROWN LS 3202' (-1291')

Is-brn-f-xln-hd-dns

LANSING/KC 3220' (-1309')

KB=1911'

Is-off wht-v-f-xln/grn ip-v-gd pp and inter-grn por-lt brn
stn-overall wht flor-immed gd flush cut-gd odor-free oil

Is-tn-f-xln-occ f pp por-lt brn stn-wht flor-tr fr strm
cut-fnt odor tr free oil w/ chrt-gry-frsh-foss

3250

Is-dk brn-f-xln-ool-foss-hd-dns with tr oolmoldic por-lt
brn stn-flor-fr cut-gd odor-20 unit gas incrs.

Is-dk brn-f-xln-ool-foss-hd-dns-tr oolmoldic por-lt brn
stn ip-wht flor-fr strm cut-gd odor

Is-off wht-m-grn-ool-foss-tr chlk-tr lt brn stn-spotted wht
flor-fr strm cut-good odor

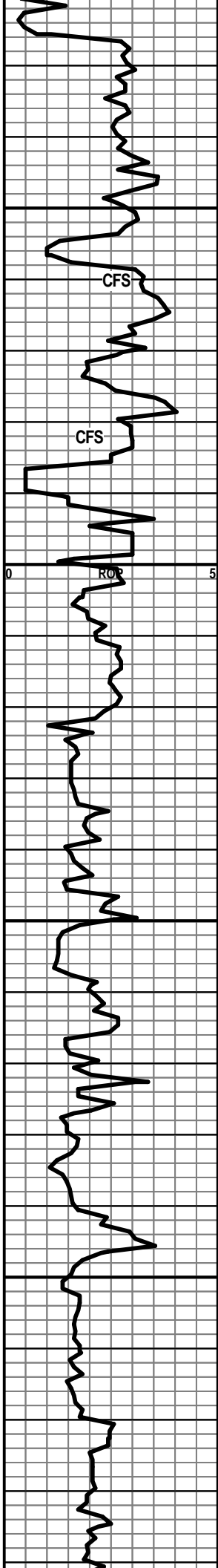
Is-crm-f-xln-ool-gd oolmoldic por-lt brn stn (saturated
in part)-wht flor-immed cut-strng odor-free oil

Is a.a.

3300

Is-crm-gd oolmoldic por-lt brn stn ip-wht flor-gd strm
cut-gd odor-tr free oil

LS-OFF WHT-F-XLN-OOL-GD OOLMOLDIC POR-TR LT
BRN STN-TR FLOR-TR CUT-GD ODOR



LS-TN-F-XLN-HD-DNS W/ CHRT-OFF WHT-FRSH

LS-TN-F-XLN-HD-DNS W/ PP POR-V-LT BRN STN-NO VIS FLOR-IMMED FLUSH CUT-GD ODOR

3350 SH-BLK-CARB

LS-LT BRN-F-XLN/GRN-OOL-FR TO GD OOLMOLDIC POR-LT BRN STN IP-SCATT YEL FLOR-FR STRM CUT IP TO NO VIS CUT-GD ODOR

LS-LT BRN-F-XLN-PR PP AND SM VUG POR-LT BRN STN IP-SCATTED YEL FLOR-GD STRM CUT-FREE OIL-GD ODOR

LS-CRM-F-XLN-OOL-FR TO GD OOLMOLDIC POR-TR LT BRN STN-DK BLK STN-SCATT YEL FLOR-FR STRM CUT-GD ODOR

LS-TN-F-XLN-OOL-EX OOLMOLDIC POR-LT BRN STN-YEL FLOR-OVERALL-EX CUT-GD ODOR-FREE OIL

3400 POOR SAMPLE

LS-GRY-F-XLN-HD-DNS W/ CHRT-OFF WHT-OPQ

SH-GRY-SPLNTY

LS-TN-F-XLN-OOL-BRIT-NO VIS POR-DULL WHT FLOR-NO VIS SHOW

LS-CRM/TN-F-XLN-OOL-1 PC PR INTER-XLN POR LT BRN STN-DULL YELL FLOR-FR STRM CUT

SH-GRY/RED-SFT-BLKY

LS-OFF WHT-F-XLN-CHLKY-BRIT-DULL WHT FLOR-NO VIS SHOW

3450 BASE OF THE B/KC 3451'

SH-GRY-BLKY-WAXY

LS-REDDISH BRN-F-XLN-SILTY-SLI SHLY-BRIT-DNS

SH-REDDISH BRN-V-SILTY

SH-GRY-BLKY-LMY

SH-RED-V-SFT-GUMMY-SILTY

SH-GRY-SPLINTY-LMY

3500 CHRT-VARIG-FRSH W/ TR SLTSS-FRSTY GRY-FGRN-SLI SHLY-NO VIS POR-NO VIS SHOW

CHRT-VARIG-FRSH W/SH-RED-SFT-GUMMY

CHRT AND SH A.A.

ARBUCKLE 3537' (-1626')

DOLO-OFF WHT-CRS-XLN-GD INTR-XLN POR-LT BRN STN-YELL FLOR-GD STRM CUT-GD ODOR

60 UNIT GAS INC

40 UNIT GAS INC

GAS DETECTOR OFF CHART

STN-FEEL FLOR-GD STRM CUT-GD ODOR
DOLO-CRM-CRS-XLN-OOL-LT BRN STN-GD
INTER-XLN/VUG TR OOLMOLDIC POR-YEL FLOR-GD
STRMING CUT-GD ODOR

DOLO-TN-CRS XLN/VUG POR-LT BRN STN-FR INTERXLN/VUG
POR-GD STRM CUT-GD ODOR-FREE OIL

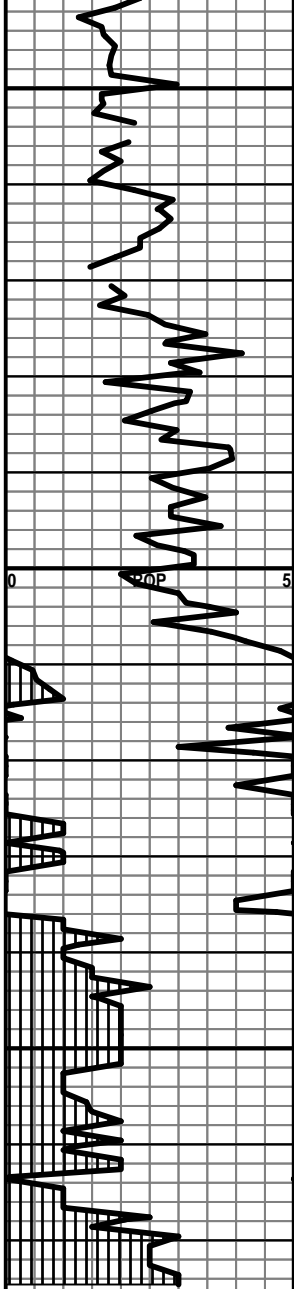
DOLO-CRM-F-XLN-SNDY-HD-DNS-DULL WHT FLOR-NO
VIS SHOW

DOLO-OFF WHT-CRS-XLN-SNDY-TR LT BRN STN IN
CRS-XLN DOLO

DOLO-OFF WHT-F-XLN-V-SNDY-NO VIS STN

DOLO-OFF WHT-F-XLN-SNDY- W/ SND GRNS IN
BOTTOM OF TRAY

GRANITE 3607' (-1696')



TD = 3675
FT

RTD=3675 FT

3550
3600
3650
3700
50