



DRILL STEM TEST REPORT

Prepared For: **F.G.Holl Company LLC**

9431 East Central Suite 100
Wichita, Kansas 67206

ATTN: Renee Husted

Calcara#2-19

19-19s-14w

Start Date: 2017.09.26 @ 12:16:00

End Date: 2017.09.26 @ 00:00:00

Job Ticket #: 01194 DST #: 2

Eagle Testers
1309 Patton Road Great Bend, Kansas 67530
620-791-7394

Printed: 2017.09.26 @ 05:22:34

F.G.Holl Company LLC
19-19s-14w
Calcara#2-19
DST # 2
Kansas City "J"
2017.09.26



DRILL STEM TEST REPORT

F.G.Holl Company LLC

19-19s-14w

9431 East Central Suite 100
 Wkchita, Kansas 67206

Calcara#2-19

Job Ticket: 01194

DST#: 2

ATTN: Renee Hustead

Test Start: 2017.09.26 @ 12:16:00

GENERAL INFORMATION:

Formation: **Kansas City "J"**

Deviated: No Whipstock: ft (KB)

Time Tool Opened: 02:09:00

Time Test Ended: 00:00:00

Test Type: Conventional Bottom Hole (Initial)

Tester: Glene Budig

Unit No: 1

Interval: **3382.00 ft (KB) To 3399.00 ft (KB) (TVD)**

Reference Elevations: 1910.00 ft (KB)

Total Depth: 3399.00 ft (KB) (TVD)

1902.00 ft (CF)

Hole Diameter: 7.88 inches Hole Condition: Fair

KB to GR/CF: 8.00 ft

Serial #: 91716 Outside

Press@RunDepth: 593.29 psig @ 3394.00 ft (KB)

Capacity: 5000.00 psig

Start Date: 2017.09.26

End Date: 2017.09.26

Last Calib.: 2017.09.26

Start Time: 12:16:00

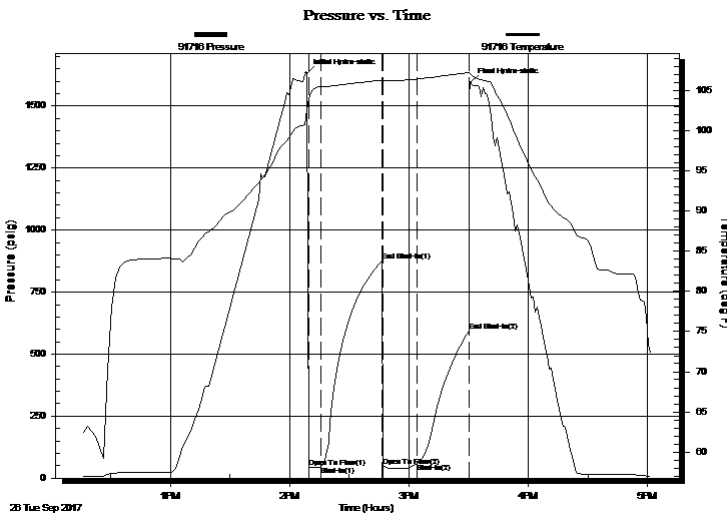
End Time: 17:01:29

Time On Btm: 2017.09.26 @ 14:08:30

Time Off Btm: 2017.09.26 @ 15:31:00

TEST COMMENT: 1st Opening 5 Minutes weak surface blow
 1st Shut-in 30 Minutes no blow back
 2nd Opening 15 Minutes Weak blow for 8 minutes and died
 2nd Shut-In 30 Minutes no blow back

PRESSURE SUMMARY



Time (Min.)	Pressure (psig)	Temp (deg F)	Annotation
0	1632.55	102.61	Initial Hydro-static
1	45.00	103.99	Open To Flow (1)
8	47.69	105.43	Shut-In(1)
38	876.40	106.26	End Shut-In(1)
39	48.36	106.25	Open To Flow (2)
56	58.81	106.41	Shut-In(2)
82	593.29	107.19	End Shut-In(2)
83	1594.39	107.13	Final Hydro-static

Recovery

Length (ft)	Description	Volume (bbl)
10.00	Drilling Mud	0.60

Gas Rates

Choke (inches)	Pressure (psig)	Gas Rate (Mcf/d)



DRILL STEM TEST REPORT

F.G.Holl Company LLC

19-19s-14w

9431 East Central Suite 100
Wichita, Kansas 67206

Calcara#2-19

Job Ticket: 01194

DST#: 2

ATTN: Renee Husted

Test Start: 2017.09.26 @ 12:16:00

GENERAL INFORMATION:

Formation: **Kansas City "J"**

Deviated: No Whipstock: ft (KB)

Time Tool Opened: 02:09:00

Time Test Ended: 00:00:00

Test Type: Conventional Bottom Hole (Initial)

Tester: Glene Budig

Unit No: 1

Interval: **3382.00 ft (KB) To 3399.00 ft (KB) (TVD)**

Reference Elevations: 1910.00 ft (KB)

Total Depth: 3399.00 ft (KB) (TVD)

1902.00 ft (CF)

Hole Diameter: 7.88 inches Hole Condition: Fair

KB to GR/CF: 8.00 ft

Serial #: 9139

Inside

Press@RunDepth: 614.09 psig @ 3394.00 ft (KB)

Capacity: 5000.00 psig

Start Date: 2017.09.26

End Date: 2017.09.26

Last Calib.: 2017.09.26

Start Time: 12:16:00

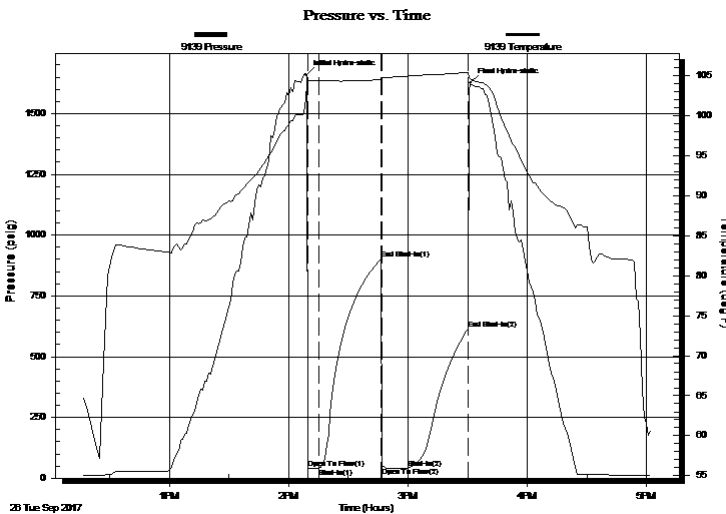
End Time: 17:02:00

Time On Btm: 2017.09.26 @ 14:08:59

Time Off Btm: 2017.09.26 @ 15:31:30

TEST COMMENT: 1st Opening 5 Minutes weak surface blow
1st Shut-in 30 Minutes no blow back
2nd Opening 15 Minutes Weak blow for 8 minutes and died
2nd Shut-In 30 Minutes no blow back

PRESSURE SUMMARY



Time (Min.)	Pressure (psig)	Temp (deg F)	Annotation
0	1660.47	103.67	Initial Hydro-static
1	38.64	104.30	Open To Flow (1)
7	38.72	104.40	Shut-In(1)
38	900.61	104.46	End Shut-In(1)
39	43.48	104.61	Open To Flow (2)
52	39.98	104.91	Shut-In(2)
81	614.09	105.37	End Shut-In(2)
83	1625.50	104.56	Final Hydro-static

Recovery

Length (ft)	Description	Volume (bbl)
10.00	Drilling Mud	0.60

Gas Rates

Choke (inches)	Pressure (psig)	Gas Rate (Mcf/d)



DRILL STEM TEST REPORT

TOOL DIAGRAM

F.G.Holl Company LLC

19-19s-14w

9431 East Central Suite 100
Wichita, Kansas 67206

Calcara#2-19

Job Ticket: 01194

DST#: 2

ATTN: Renee Husted

Test Start: 2017.09.26 @ 12:16:00

Tool Information

Drill Pipe:	Length: 3367.00 ft	Diameter: 7.88 inches	Volume: 203.10 bbl	Tool Weight: 2000.00 lb
Heavy Wt. Pipe:	Length: 0.00 ft	Diameter: 0.00 inches	Volume: 0.00 bbl	Weight set on Packer: 20000.00 lb
Drill Collar:	Length: 0.00 ft	Diameter: 0.00 inches	Volume: 0.00 bbl	Weight to Pull Loose: 64000.00 lb
			<u>Total Volume: 203.10 bbl</u>	Tool Chased 0.00 ft
Drill Pipe Above KB:	15.00 ft			String Weight: Initial 50000.00 lb
Depth to Top Packer:	3382.00 ft			Final 50000.00 lb
Depth to Bottom Packer:	ft			
Interval between Packers:	17.00 ft			
Tool Length:	47.00 ft			
Number of Packers:	2	Diameter: 6.75 inches		
Tool Comments:				

Tool Description	Length (ft)	Serial No.	Position	Depth (ft)	Accum. Lengths
------------------	-------------	------------	----------	------------	----------------

Shut In Tool	5.00			3357.00	
Hydraulic tool	5.00			3362.00	
Jars	5.00			3367.00	
Safety Joint	5.00			3372.00	
Packer	5.00			3377.00	30.00 Bottom Of Top Packer
Packer	5.00		Fluid	3382.00	
Anchor	12.00			3394.00	
Recorder	0.00	9139	Inside	3394.00	
Recorder	0.00	91716	Outside	3394.00	
Bullnose	5.00			3399.00	17.00 Bottom Packers & Anchor
Total Tool Length:	47.00				



DRILL STEM TEST REPORT

FLUID SUMMARY

F.G.Holl Company LLC

19-19s-14w

9431 East Central Suite 100
 Wkchita, Kansas 67206

Calcara#2-19

Job Ticket: 01194

DST#: 2

ATTN: Renee Husted

Test Start: 2017.09.26 @ 12:16:00

Mud and Cushion Information

Mud Type: Gel Chem
 Mud Weight: 9.00 lb/gal
 Viscosity: 59.00 sec/qt
 Water Loss: 9.20 in³
 Resistivity: ohm.m
 Salinity: 5700.00 ppm
 Filter Cake: 1.00 inches

Cushion Type:
 Cushion Length: ft
 Cushion Volume: bbl
 Gas Cushion Type:
 Gas Cushion Pressure: psig

Oil API: deg API
 Water Salinity: ppm

Recovery Information

Recovery Table

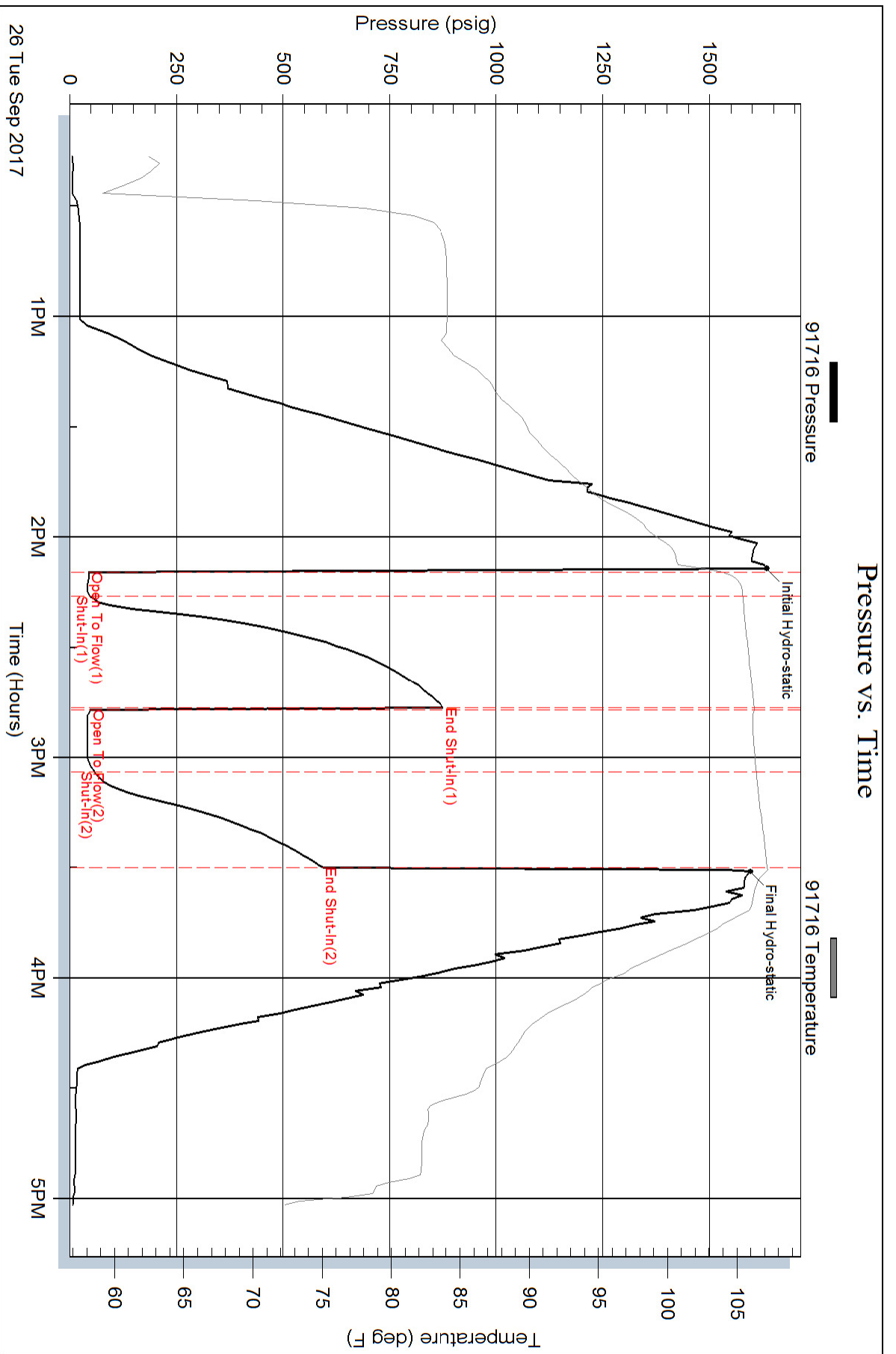
Length ft	Description	Volume bbl
10.00	Drilling Mud	0.603

Total Length: 10.00 ft Total Volume: 0.603 bbl

Num Fluid Samples: 0 Num Gas Bombs: 0 Serial #:

Laboratory Name: Laboratory Location:

Recovery Comments:



Pressure vs. Time

