



Scale 1:240 (5"=100') Imperial  
Measured Depth Log

Well Name: Dianne A #1-27  
 API: 15-109-21598  
 Location: SEC. 27-T14S-R32W  
 License Number: 9408  
 Spud Date: 7/29/2019  
 Surface Coordinates: 500' FNL & 2278' FEL

Region: LOGAN COUNTY, KS.  
 Drilling Completed: 8/15/2019

Bottom Hole Coordinates:  
 Ground Elevation (ft): 2741' K.B. Elevation (ft): 2750'  
 Logged Interval (ft): 3500' To: TD Total Depth (ft): 4500'  
 Formation: MISSISSIPPI  
 Type of Drilling Fluid: CHEMICAL MUD

Printed by MudLog from WellSight Systems 1-800-447-1534 www.WellSight.com

**OPERATOR**

Company: TRANS PACIFIC OIL CORPORATION  
 Address: 100 S MAIN ST. SUITE #200  
 WICHITA, KS. 67202

**GEOLOGIST**

Name: NICK HIXON  
 Company: TRANS PACIFIC OIL CORPORATION  
 Address: 100 S MAIN ST. SUITE #200  
 WICHITA, KS. 67202

**ROCK TYPES**

Siltstn	Brec	Dol	Mrlst	Sltst
Grysh	Cht	Gyp	Salt	Ss
Dolm	Clyst	Igne	Shale	Till
Anhy	Blksh	Lmst	Shcol	
Bent	Congl	Meta	Shgy	

**ACCESSORIES**

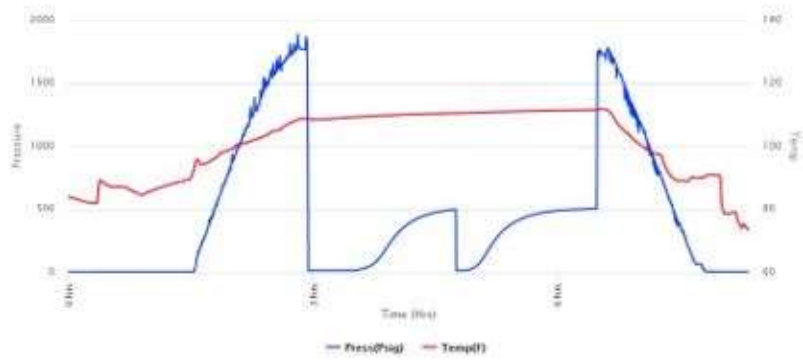
<b>MINERAL</b>	Gyp	<b>FOSSIL</b>	Ostra	Sltstrg
Anhy	Hvymin	Algae	Pelec	Ssstrg
Arggrn	Kaol	Amph	Pellet	<b>TEXTURE</b>
Arg	Marl	Belm	Pisolite	Boundst
Bent	Minxl	Bioclst	Plant	Chalky
Bit	Nodule	Brach	Strom	Cryxin
Brecfrag	Phos	Bryzoa	<b>STRINGER</b>	Earthy
Calc	Pyr	Cephal	Anhy	Finexln
Carb	Salt	Coral	Arg	Grainst
Chtdk	Sandy	Crin	Bent	Lithogr
Chtlt	Silt	Echin	Coal	Microxln
Dol	Sil	Fish	Gyp	Mudst
Feldspar	Sulphur	Foram	Ls	Packst
Ferrpel	Tuff	Fossil	Mrst	Wackest
Ferr		Gastro		
Glau		Oolite		

**OTHER SYMBOLS**

<b>POROSITY</b>	Vuggy	<b>ROUNDING</b>	Even	Dst
Earthy	<b>SORTING</b>	Rounded	Spotted	<b>EVENT</b>
Fenest	Well	Subrnd	Ques	Rft
Fracture	Moderate	Subang	Dead	Sidewall
Inter	Poor	Angular	<b>INTERVAL</b>	
Moldic		<b>OIL SHOW</b>	Dst1	
Organic		Gas	Core	
Pinpoint				

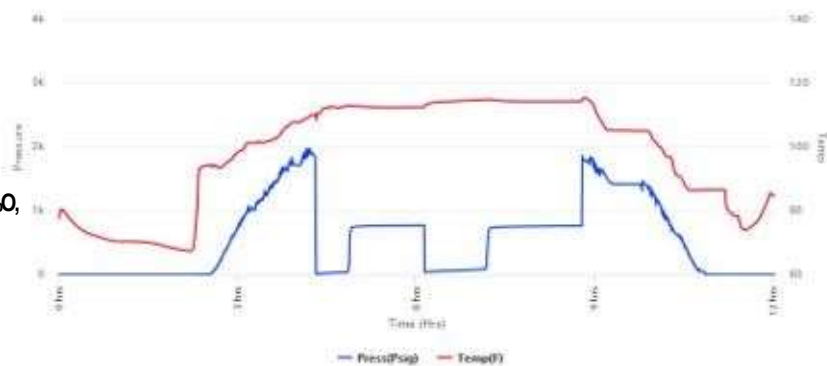
### DST #1

LANSING C  
3766'-3800'  
30-75-5-90  
IF: WEAK SURFACE BLOW, DIED IN 15 MIN.  
IS: NO BLOWBACK.  
FF: NO BLOW.  
FS: NO BLOWBACK.  
RECOVERED: 3' MUD  
HP: 1768-1731 PSI  
IF: 15-16 PSI  
FF: 16-17 PSI  
SIP: 499-505 PSI



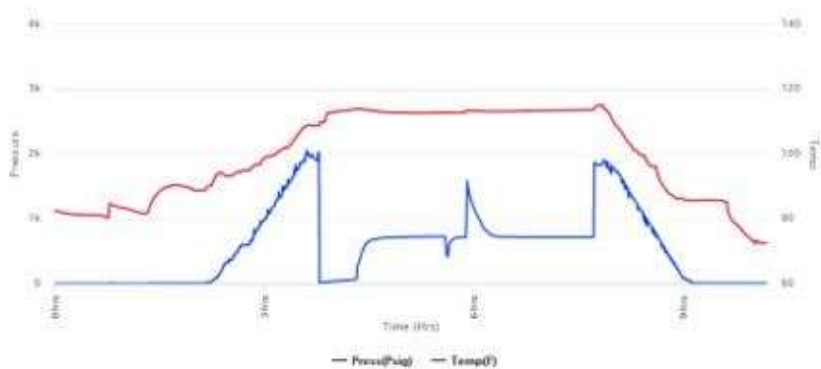
### DST #2

LANSING I-J  
3936'-4001'  
30-75-60-90  
IF: SURFACE BLOW BUILT TO 6.5"  
IS: NO BLOWBACK.  
FF: SURFACE BLOW IN 3 MIN, BUILT TO 6.5"  
FS: NO BLOWBACK.  
RECOVERED: 5' SGCO (90%O), 5' SG&O&WCM (5%G, 5%O, 10%W), 62' SOCHWCM (5%O, 35%W) 63' SOCWCM (5%O, 25%W)  
HP: 1901-1810 PSI  
IF: 18-44 PSI  
FF: 48-87 PSI  
SIP: 779-766 PSI



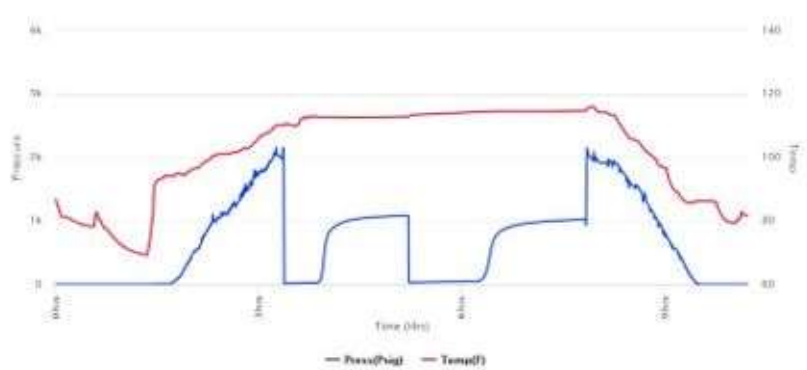
### DST #3

LANSING K&L  
3995'-4076'  
30-75-30-90  
IF: 1/4" BLOW BUILT TO 9 3/8"  
IS: NO BLOWBACK.  
FF: NO BLOW, FLUSHED TOOL @ 17 MIN, NO BLOW  
FS: NO BLOWBACK.  
RECOVERED: 15' SOCWCM (5%O, 5%W), 62' SOCWCM (1%O, 3%W), 31' SOCWCM (2%O, 5%W)  
HP: 1920-1902 PSI  
IF: 21-54 PSI  
FF: 0 PSI  
SIP: 727-720 PSI



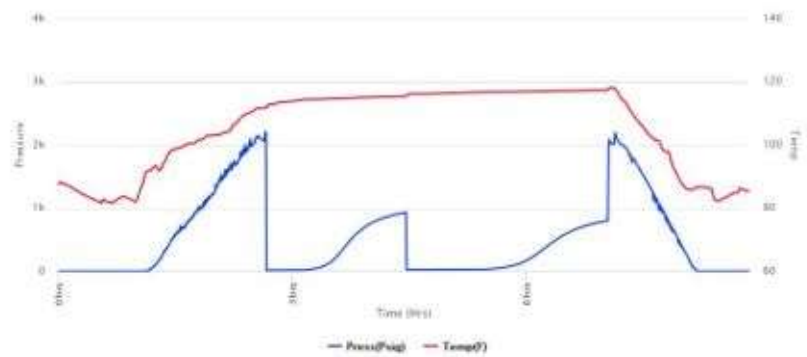
### DST #4

ALTAMONT B&C / PAWNEE  
4140'-4230'  
30-75-60-90  
IF: 1/4" BLOW BUILT TO 2 1/4"  
IS: NO BLOWBACK.  
FF: WEAK SURFACE BLOW BUILT TO 1 3/4"  
FS: NO BLOWBACK.  
RECOVERED: 10' SOCM (1%O), 62' SWCM W/  
TRACE OIL (.01%O, 3%W)  
HP: 1997-1974 PSI  
IF: 19-30 PSI  
FF: 34-50 PSI  
SIP: 1087-1025 PSI



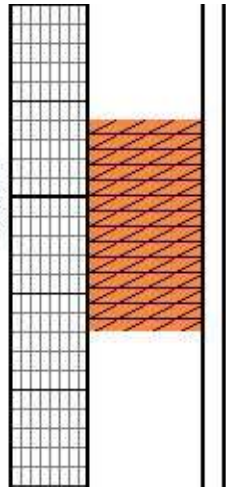
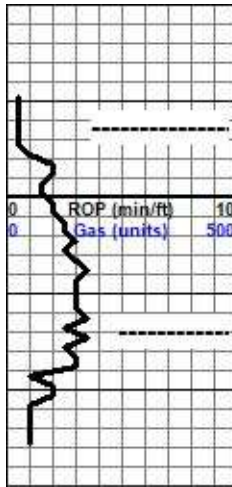
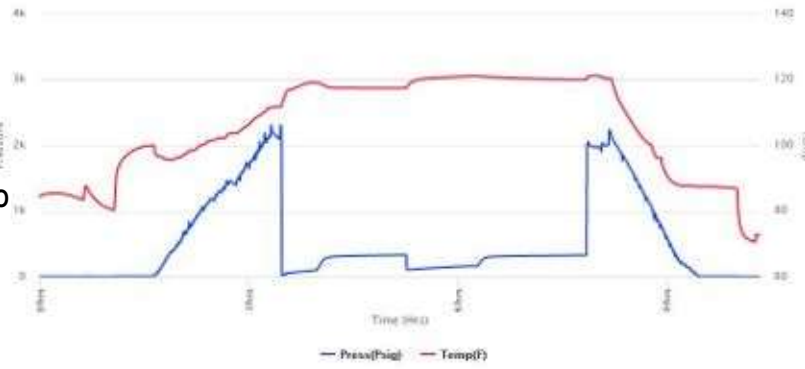
### DST #5

FORT SCOTT-JOHNSON  
4252'-4362'  
30-75-60-90  
IF: 1/4" BLOW BUILT TO 1 1/8"  
IS: NO BLOWBACK.  
FF: WEAK SURFACE BLOW IN 2.5 MIN BUILT TO 1/8"  
FS: NO BLOWBACK.  
RECOVERED: 35' SOCM (3%O)  
HP: 2071-2018 PSI  
IF: 18-23 PSI  
FF: 26-31 PSI  
SIP: 934-794 PSI



DST #6

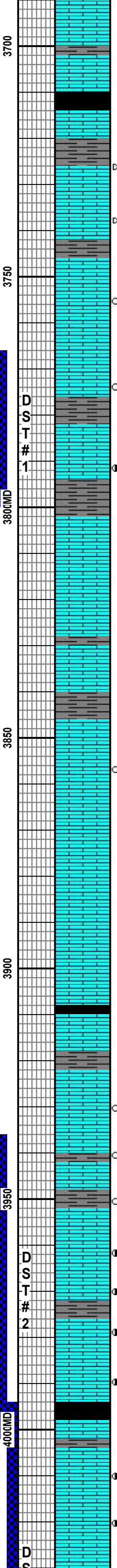
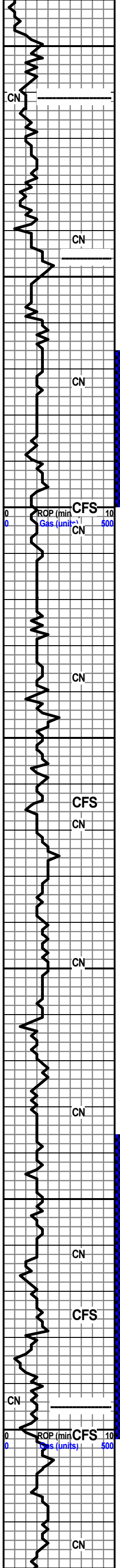
MORROW  
 4361'-4406'  
 30-75-60-90  
 IF: BOB IN 7 MIN  
 IS: SURFACE BLOW BUILT TO 1 3/4"  
 FF: BOB IN 5 MIN  
 FS: BOB IN 8 MIN  
 RECOVERED: 744' GIP, 220' HGCO (30%G), 124' HGCHMCO (30%G, 30%AM), 62' HOCHMCG (30%O, 30%AM), 62' HGCHMCO (30%G, 30%AM)  
 HP: 2108-2021 PSI  
 IF: 26-102 PSI  
 FF: 105-161 PSI  
 SIP: 333-329 PSI



ANH. 2195' (+555')  
 ELOG 2193' (+557')

BASE ANH. 2218' (+532')  
 ELOG 2214' (+536')

Curve Track 1 ROP (min/ft) — Gas (units) - - - -	MD	Porosity	Lithology	Geological Descriptions	Comments
	35	24% 18% 12% 6%	Oil Shows	<b>GEO ON LOCATION @ 8:00 PM 8/1/2019</b>	
	3550		CN		WT: 8.8 VIS: 56 LCM: 1#
	3600MD		CN		WT: 8.9 VIS: 52 LCM: 1#
	3650		CN	LS: GRY - BRN, F XLN, DSE, POOR PPT POR, NSFO. ABUNDANT GRY & RD SH. LS & SH: AA.	
			CN	LS: GRY - TAN, F XLN, DSE, POOR PPT & INT XLN POR, NSFO. SH: GRY - RD, SFT.	
			CN	LS: LT GRY - GRY - TAN, F XLN, DSE, POOR PPT POR, NSFO. SH: GRY - BLK - RD.	WT: 9.0 VIS: 51 LCM: 1#
			CN	LS: LT GRY - TAN, F XLN, DSE, PR PPT & INT XLN POR, SUB CHLKY IN PT, NSFO. SH: GRY - BLK, FEW RD PCS.	



LS: OFF WHT - TAN, F XLN, CHLKY - SUB CHLKY IN PT, POOR PPT POR, NSFO. SH: GRY & RD.

LS: OFF WHT - TAN, F XLN, CHLKY IN PT, POOR POR, NSFO.  
**HEEB. 3714' (-964')**  
**ELOG 3711' (-961')**  
 ABUNDANT BLK SH: CARB.

LS: GRY, F XLN, MOST DSE, POOR INT XLN POR, FEW SMALL VUGS, RARE SPOTTY BLK DEAD STN, NSFO, NO ODOR.

LS: GRY, F XLN, DSE, POOR PPT & INT XLN POR, FEW PCS WITH DEAD BLK STN, NSFO, NO ODOR.  
**LANS. 3750' (-1000')**  
**ELOG 3746' (-996')**

LS: OFF WHT, F XLN, DSE, POOR PPT POR, V RARE SPOTTY STN IN 3-4 PCS, NSFO, NO ODOR.  
 LS: GRY - TAN, F XLN, POOR PPT & INT XLN POR, FEW SMALL VUGS, SUB CHLKY, NS.

LS: OFF WHT - TAN, F XLN, FEW OOL PCS, POOR INT XLN POR & FEW SMALL VUGS, RARE SPOTTY STN IN PT, NSFO, NO ODOR.

LS: OFF WHT - TAN, F XLN, DSE, POOR PPT & INT XLN POR, SUB CHLKY IN PT, NS.

LS: OFF WHT - TAN, F XLN, DSE, FEW OOL PCS W/ PR INTER OOL POR & PR - FR SFO, NO ODOR. RED GUMMY SH IN PT.

ABUNDANT SH: GRY - BLK - RED, SFT. LS: GRY.

LS: OFF WHT - TAN, F XLN, DSE, POOR PPT POR, NSFO. SH: GRY - RD - BLK, SFT.

LS: TAN - GRY, F XLN, DSE, POOR INT XLN POR W/ SMALL VUGS, NSFO. SH: AA.

LS: OFF WHT, F XLN, DSE, POOR PPT POR, SUB CHLKY IN PT, NSFO. SH: GRY - RED.

LS & SH: AA.

LS: GRY, F XLN, DSE, POOR PPT & INT XLN POR, NSFO.

LS: TAN - GRY, F XLN, POOR INT XLN & PPT POR, FEW PCS W/ SPOTTY BRN STN, NSFO.

LS: GRY, F XLN, DSE, POOR PPT & INT XLN POR, NSFO.

LS: OFF WHT - GRY, F XLN, DSE, POOR PPT & INT XLN POR, NSFO, NO ODOR.

LS: OFF WHT, SME OOL PCS, POOR INT XLN & VUGGY POR, IMBD PYR IN PT, NSFO.

LS: AA.

LS: OFF WHT, F XLN, DSE, OOL PCS IN PT, POOR INT XLN POR, NSFO.

LS: OFF WHT, F XLN, DSE, NSFO.

SH: BLK, CARB.

LS: OFF WHT - GRY, F XLN, DSE, POOR POR, NSFO, NO ODOR.

LS: GRY, F XLN, DSE, POOR INT XLN POR, FEW SMALL VUGS, SPOTTY BRN STN IN PT, NSFO. SH: GRY - BLK.

LS: GRY, F XLN, POOR POR, 2 PCS W/ BRN STN, NSFO, NO ODOR.

LS: GRY, F XLN, DSE, CHLKY IN PT, POOR INT XLN POR, FEW PCS W/ SPOTTY BRN STN, NSFO, NO ODOR. SH: GRY - BLK.

LS: GRY, F XLN, POOR INT XLN POR, FEW VUGS, SPOTTY STN IN PT, FEW PCS W/ VSSFO ON BRK, PR ODOR.

LS: GRY, F XLN, POOR INT XLN POR, 3-4 PCS W/ VSSFO ON BRK, PR ODOR.

LS: GRY, F XLN, DSE, POOR INT XLN POR, SME SMALL VUGS, SPOTTY STN IN PT, VSSFO ON BRK, FAINT ODOR.

LS: GRY, F XLN, OOL PCS, PR INT XLN & OOM POR, BRN STN IN PT, VSSFO ON BRK, FAINT ODOR.  
**STARK 3999' (-1249')**  
**ELOG 3995' (-1245')**  
 SH: BLK, CARB.

LS: GRY, F XLN, DSE, POOR INT XLN POR, FEW SMALL VUGS W/ BRN STN & PR - FR SFO, FR ODOR.

LS: GRY, F XLN, DSE, POOR INT XLN POR, SMALL VUGS, BRN STN IN PT, PR SFO, FAINT ODOR.

LS: GRY, F XLN, DSE, POOR INT XLN POR,

MUD PROP. @  
 3749'  
 WT: 9.0  
 VIS: 47  
 WL: 7.2  
 CC: 1500  
 LCM: 2#

DST #1  
 3766'-3800'  
 SEE HEADER FOR RESULTS

WT: 8.9  
 VIS: 56  
 LCM: 3#

PIPE STRAP 2.28' SHORT

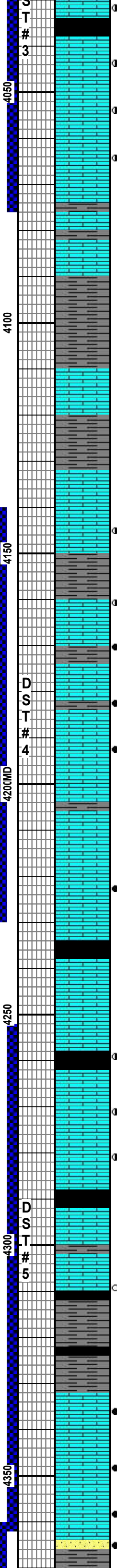
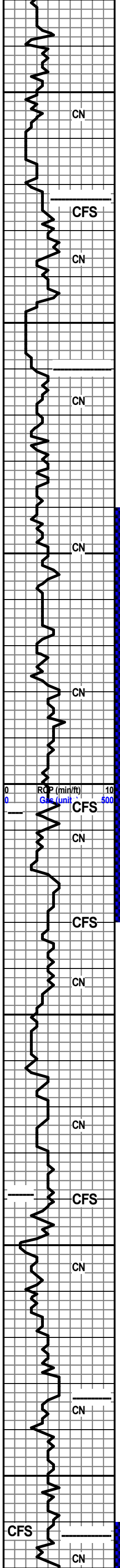
WT: 9.1  
 VIS: 54  
 LCM: 3#

MUD PROP. @  
 3864'  
 WT: 8.9  
 VIS: 50  
 WL: 8.0  
 CC: 2200  
 LCM: 1#

DST #2  
 3936'-4001'  
 SEE HEADER FOR RESULTS

DST #3  
 3995'-4076'  
 SEE HEADER FOR RESULTS

MUD PROP. @  
 4001'  
 WT: 9.0  
 VIS: 53  
 WL: 8.8  
 CC: 3300  
 LCM: 1#



SPOTTY STN IN PT, FEW PCS W/ VSSFO, PYR IN PT.  
 ABUNDANT SH: BLK, CARB.  
 LS: GRY, F XLN, POOR INT XLN & VUGGY POR, SSFO ON BRK, FAINT ODOR.

LS: GRY, F XLN, POOR INT XLN POR, FEW VUGS, BRN STN IN PT, SSFO ON BRK, FAINT ODOR.

LS: GRY, F XLN, DSE, POOR PPT & INT XLN POR, FEW VUGS, BRN STN IN PT, SSFO ON BRK, FAINT ODOR.

**BKC 4078' (-1328')**  
**ELOG 4073' (-1323')**  
 LS: GRY, F XLN, POOR POR, FEW SMALL VUGS, NSFO, NO STN. SH: GRY.

LS: GRY, F XLN, DSE, POOR PPT & INT XLN POR, NSFO.

SH: GRY - RED, GUMMY IN PT.

ABUNDANT GRY GUMMY CLAY.

**MARM. 4111' (-1361')**  
**ELOG 4110' (-1360')**  
 LS: GRY, F XLN, DSE, POOR PPT POR, NSFO, FEW FOSS.

LS: GRY, F XLN, POOR POR, NSFO, FEW FOSS.

SH: GRY - RED.

LS: GRY - BRN, F XLN, DSE, POOR PPT & INT XLN POR, FEW SMALL VUGS, SPOTTY BRN STN IN PT, VSSFO ON BRK, NO ODOR.

LS: AA.

LS: GRY - BRN, F XLN, DSE, POOR INT XLN & VUGGY POR, BRN STN THRUOUT, SSFO ON BRK, NO ODOR.

LS: GRY, F XLN, PR - FR INT XLN & VUGGY POR, FR SFO ON BRK, FAINT ODOR

LS: GRY, F XLN, PR - FR INT XLN & VUGGY POR, FR SFO ON BRK, FAINT ODOR

LS: GRY, PR - FR INT XLN & VUGGY POR, FR SFO ON BRK, PR ODOR.

LS: GRY, F XLN, DSE, POOR POR, NSFO.  
 SH: GRY - BLK.

**PAW. 4206' (-1456')**  
**ELOG 4206' (-1456')**  
 LS: TAN, F XLN, DSE, POOR PPT & INT XLN POR, NSFO. CHRT IN PT: FRESH, ORG.

LS: TAN, F XLN, FR INT XLN & VUGGY POR, FR SFO ON BRK, BRN STN THRUOUT, GOOD ODOR. SME FRESH CHRT IN PT: GRY.

LS: GRY, F XLN, DSE, POOR PPT & INT XLN POR, NSFO, NO ODOR. SH: GRY - BLK.

LS: GRY, F XLN, DSE, POOR POR, NSFO.  
 SH: GRY - BLK, SFT.

LS: DRK GRY, F XLN, POOR INT XLN POR, SPOTTY BRN STN IN PT, VSSFO ON BRK, NO ODOR.

LS: TAN - BRN, F XLN, OOL PCS, POOR INT XLN & INT OOL POR, SSFO ON BRK, FAINT ODOR.

LS: TAN - BRN, F XLN, PR - FR INT XLN POR, SSFO ON BRK, FAINT ODOR.

**CHER SH 4292' (-1542')**  
**ELOG 4289' (-1539')**  
 LS: TAN - BRN, F XLN, DSE, POOR PPT & INT XLN POR, NSFO. SH: GRY - BLK - RED.

LS: TAN - BRN, F XLN, DSE, POOR INT XLN POR, SPOTTY BRN STN IN PT, FAINT ODOR, CHLKY IN PT.

ABUNDANT BLK SH: CARB. LS: TAN - BRN, F XLN, DSE, NSFO.

LS: TAN - BRN, F XLN, DSE, POOR POR, NSFO. SH: GRY - BLK.

**JOHNSON 4334' (-1584')**  
**ELOG 4333' (-1583')**  
 LS: BRN - TAN, F XLN, DSE, PR - FR INT XLN & VUGGY POR, SME PCS W/ SAT STN, GSFO ON BRK, GAS BUB ON BRK, GD ODOR.

LS: BRN - TAN, F XLN, DSE, PR - FR INT XLN & VUGGY POR, BRN STN IN PT, PR - FR SFO ON BRK, GD ODOR.

**BASE JOHN. 4365' (-1615')**  
**ELOG 4363' (-1613')**  
 SND: GRY, VF - F GRN, SUB RNDED, FRI - SEMI FR. PR - FR INT CPN POR. GSFO ON

MUD PROP.  
 @4076'  
 WT: 9.1  
 VS: 58  
 WL: 9.6  
 CC: 4500  
 LCM: 1#

WT: 9.3  
 VS: 61  
 LCM: 1#

DST #4  
 4140'-4230'  
 SEE HEADER  
 FOR RESULTS

MUD PROP.  
 @4230'  
 WT: 9.2  
 VS: 58  
 WL: 8.8  
 CC: 4400  
 LCM: 2#

DST #5  
 4253'-4362'  
 SEE HEADER  
 FOR RESULTS

WT: 8.8  
 VS: 51  
 LCM: 2#

PIPE STRAP 2.51' SHORT  
 MUD PROP.  
 @4362'  
 WT: 9.4  
 VS: 58  
 WL: 9.6  
 CC: 4500  
 LCM: 1#

