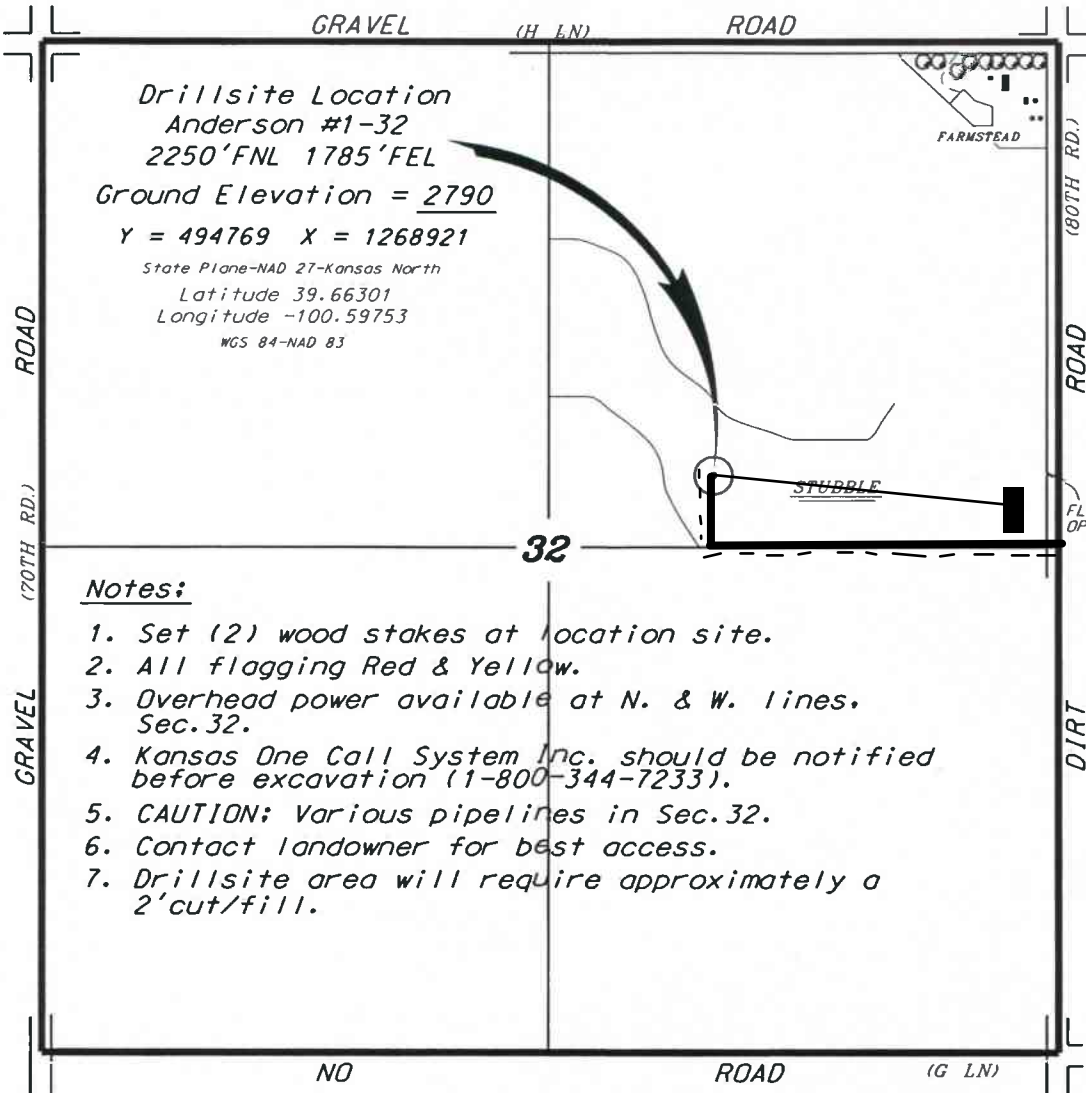


L.D. DRILLING, INC.
 ANDERSON LEASE
 NE. 1/4, SECTION 32, T4S, R29W
 DECATUR COUNTY, KANSAS

Directions:

From the intersection of Highway 36 and Highway 83 (in Oberlin, Kansas) go 11.0 miles South on Highway 83, then go 3.0 miles West to the NE corner of Section 32, then go 0.43 miles South to a flag on the west edge of road, then go 0.34 miles West to location.

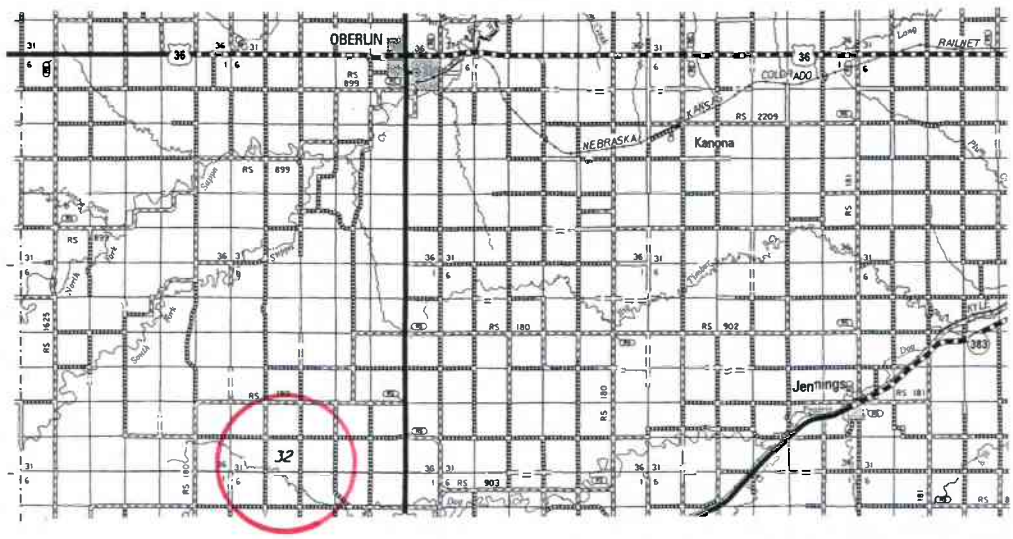


Drillsite Location
 Anderson #1-32
 2250'FNL 1785'FEL
 Ground Elevation = 2790
 Y = 494769 X = 1268921
 State Plane-NAD 27-Kansas North
 Latitude 39.66301
 Longitude -100.59753
 WGS 84-NAD 83

Notes:

1. Set (2) wood stakes at location site.
2. All flagging Red & Yellow.
3. Overhead power available at N. & W. lines, Sec. 32.
4. Kansas One Call System Inc. should be notified before excavation (1-800-344-7233).
5. CAUTION; Various pipelines in Sec. 32.
6. Contact landowner for best access.
7. Drillsite area will require approximately a 2' cut/fill.

* Ingress and egress to location as shown on this plot is per usage only and may not be legally opened for public use. Contact landowner, tenant and county road department for access.



* Controlling data is based upon the best maps and photographs available to us and upon a regular section of land containing 640 acres.

* Approximate section lines were determined using the normal standard of care of oilfield surveyors practicing in the state of Kansas. The section corners, which establish the precise section lines, were not necessarily located, and the exact location of the drillsite location in the section is not guaranteed. Therefore, the operator securing this service and accepting this plot and all other parties relying thereon agree to hold Central Kansas Oilfield Services, Inc., its officers and employees harmless from all losses, costs and expenses and said entities released from any liability from incidental or consequential damages.

* Elevations derived from National Geodetic Vertical Datum.

Date March 18, 2019