

KANSAS CORPORATION COMMISSION
OIL & GAS CONSERVATION DIVISION

TEMPORARY ABANDONMENT WELL APPLICATION

OPERATOR: License#
Name:
Address 1:
Address 2:
City: State: Zip:
Contact Person:
Phone:
Contact Person Email:
Field Contact Person:
Field Contact Person Phone:

API No. 15-
Spot Description:
Sec. Twp. S. R.
feet from N / S Line of Section
feet from E / W Line of Section
GPS Location: Lat: , Long:
Datum: NAD27 NAD83 WGS84
County: Elevation: GL KB
Lease Name: Well #:
Well Type: Oil Gas OG WSW Other:
SWD Permit #: ENHR Permit #:
Gas Storage Permit #:
Spud Date: Date Shut-In:

Table with 7 columns: Conductor, Surface, Production, Intermediate, Liner, Tubing. Rows include Size, Setting Depth, Amount of Cement, Top of Cement, Bottom of Cement.

Casing Fluid Level from Surface: How Determined? Date:
Casing Squeeze(s): to w / sacks of cement, to w / sacks of cement. Date:
Do you have a valid Oil & Gas Lease? Yes No
Depth and Type: Junk in Hole at Tools in Hole at Casing Leaks: Yes No Depth of casing leak(s):
Type Completion: ALT. I ALT. II Depth of: DV Tool: w / sacks of cement Port Collar: w / sack of cement
Packer Type: Size: Inch Set at: Feet
Total Depth: Plug Back Depth: Plug Back Method:

Geological Data:

Table with 4 columns: Formation Name, Formation Top, Formation Base, Completion Information. Rows 1 and 2.

UNDER PENALTY OF PERJURY I HEREBY ATTEST THAT THE INFORMATION CONTAINED HEREIN IS TRUE AND CORRECT TO THE BEST OF MY KNOWLEDGE

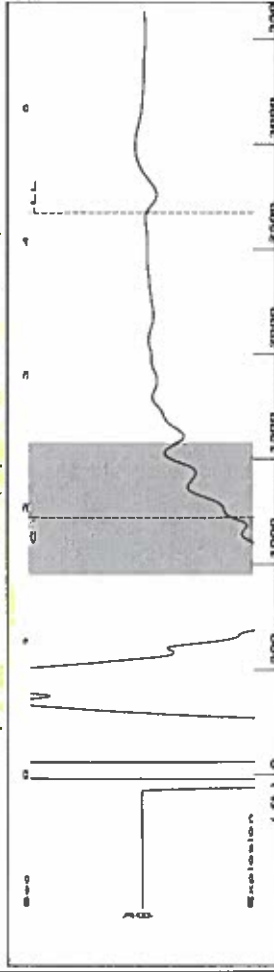
Submitted Electronically

Do NOT Write in This Space - KCC USE ONLY
Date Tested: Results: Date Plugged: Date Repaired: Date Put Back in Service:
Review Completed by: Comments:
TA Approved: Yes Denied Date:

Mail to the Appropriate KCC Conservation Office:

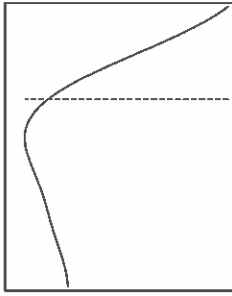
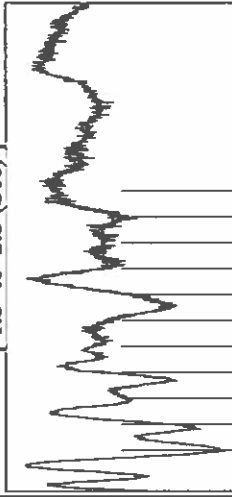
Table with 3 columns: District Office #, Address, Phone. Rows 1-4.

Group: Route 3 Well: Iakin a-2 (acquired on: 12/12/19 08:56:41)

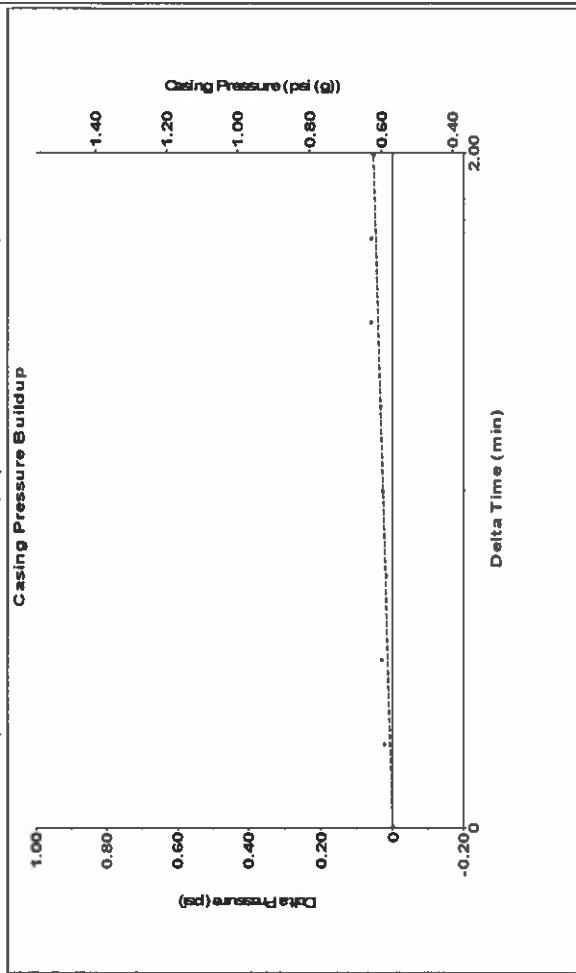


Filter Type High Pass Automatic Collar Count Yes Time 4.212 sec
 Manual Acoustic Veloc 1189.49 ft/s Manual JTS/sec 18.7617 Joints 84.3422 Jts
 Depth 2673.65 ft

[1.5 to 2.5 (Sec)]



Group: Route 3 Well: Iakin a-2 (acquired on: 12/12/19 08:56:41)



Change in Pressure 0.05 psi PT 6902 Range
 Change in Time 2.00 min

Analysis Method: Automatic

Group: Route 3 Well: Iakin a-2 (acquired on: 12/12/19 08:56:41)

Production	Potential	Casing Pressure	Producing
Current	-* BBL/D	0.6 psi (g)	Annular Gas Flow 0 Msc/D
Oil	-* BBL/D	Casing Pressure Buildup	% Liquid 100 %
Water	-* Msc/D	0.1 psi	
Gas	-* Msc/D	2.00 min	
IPR Method	Vogel	Gas/Liquid Interface Pressure	
PBHP/SBHP	-*	1.6 psi (g)	
Production Efficiency	0.0		
Oil 40 deg API		Liquid Level Depth	
Water 1.05 Sp.Gr:H2O		2673.65 ft	
Gas 0.74 Sp.Gr:AIR		Pump Intake Depth	
Acoustic Velocity 1269.54 ft/s		2816.00 ft	
		Formation Depth	
		2556.00 ft	
Formation Submergence			
Total Gaseous Liquid Column HT (TVD)	142 ft		
Equivalent Gas Free Liquid HT (TVD)	142 ft		
Acoustic Test			

Group: Route 3 Well: Iakin a-2 (acquired on: 12/12/19 08:56:41)

Acoustic Velocity	1269.54 ft/s	Joints counted	33
Joints Per Second	20.0243 jts/sec	Joints to liquid level	84.3422
Depth to liquid level	2673.65 ft	Filter Width	16.7617
Automatic Collar Count	Yes	Time to 1st Collar	1.928

January 06, 2020

Katheirne McClurkan
Merit Energy Company, LLC
13727 Noel Road, Suite 1200
Dallas, TX 75240

Re: Temporary Abandonment
API 15-093-20564-00-00
Lakin A 2
SE/4 Sec.27-24S-36W
Kearny County, Kansas

Dear Katheirne McClurkan:

"Your temporary abandonment (TA) application for the well listed above has been approved. In accordance with K.A.R. 82-3-111 the TA status of this well will expire 01/06/2021.

- * If you return this well to service or plug it, please notify the District Office.
- * If you sell this well you are required to file a Transfer of Operator form, T-1.
- * If the well will remain temporarily abandoned, you must submit a new TA application, CP-111, before 01/06/2021.

You may contact me at the number above if you have questions.

Very truly yours,

Michael Maier"