

KANSAS CORPORATION COMMISSION
OIL & GAS CONSERVATION DIVISION

TEMPORARY ABANDONMENT WELL APPLICATION

OPERATOR: License#
Name:
Address 1:
Address 2:
City: State: Zip:
Contact Person:
Phone:
Contact Person Email:
Field Contact Person:
Field Contact Person Phone:

API No. 15-
Spot Description:
Sec. Twp. S. R.
GPS Location: Lat: Long:
Datum: NAD27 NAD83 WGS84
County: Elevation:
Lease Name: Well #:
Well Type: Oil Gas OG WSW Other:
SWD Permit #: ENHR Permit #:
Gas Storage Permit #:
Spud Date: Date Shut-In:

Table with 7 columns: Conductor, Surface, Production, Intermediate, Liner, Tubing. Rows include Size, Setting Depth, Amount of Cement, Top of Cement, Bottom of Cement.

Casing Fluid Level from Surface: How Determined? Date:
Casing Squeeze(s): to w / sacks of cement, to w / sacks of cement. Date:
Do you have a valid Oil & Gas Lease? Yes No
Depth and Type: Junk in Hole at Tools in Hole at Casing Leaks: Yes No Depth of casing leak(s):
Type Completion: ALT. I ALT. II Depth of: DV Tool: w / sacks of cement Port Collar: w / sack of cement
Packer Type: Size: Inch Set at: Feet
Total Depth: Plug Back Depth: Plug Back Method:

Geological Data:

Table with 4 columns: Formation Name, Formation Top, Formation Base, Completion Information. Rows 1 and 2.

UNDER PENALTY OF PERJURY I HEREBY ATTEST THAT THE INFORMATION CONTAINED HEREIN IS TRUE AND CORRECT TO THE BEST OF MY KNOWLEDGE

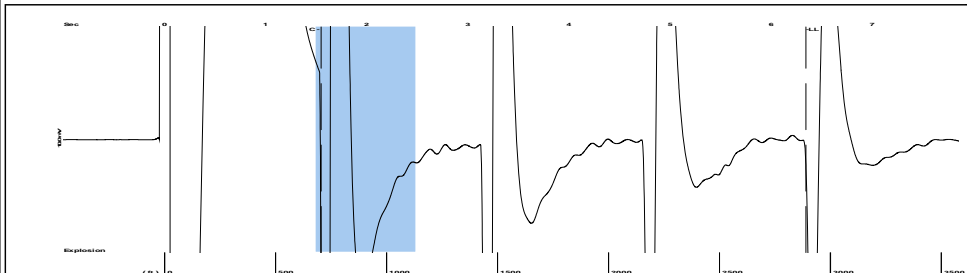
Submitted Electronically

Do NOT Write in This Space - KCC USE ONLY
Date Tested: Results: Date Plugged: Date Repaired: Date Put Back in Service:
Review Completed by: Comments:
TA Approved: Yes Denied Date:

Mail to the Appropriate KCC Conservation Office:

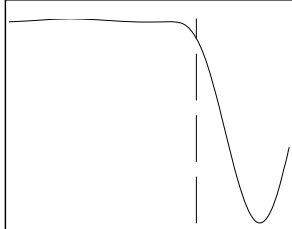
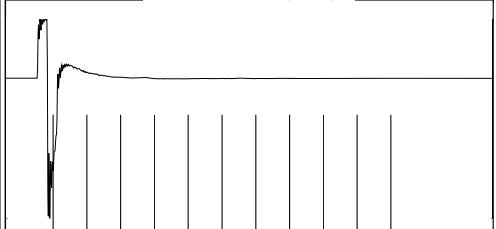
Table with 3 columns: District Office, Address, Phone. Rows for District Office #1, #2, #3, #4.

Group: MyWells Well: WARD # 1-19 (acquired on: 02/14/19 13:17:41)



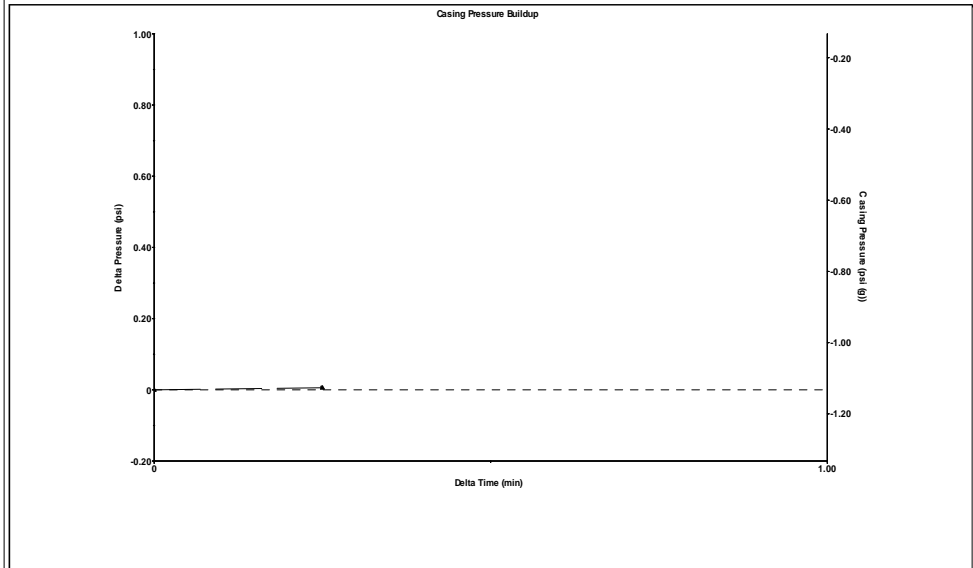
Filter Type High Pass Automatic Collar Count Yes Time 6.345 sec
 Manual Acoustic Velo 913.545 ft/s Manual JTS/sec 14.4092 Joints 91.1638 Jts
 Depth 2889.89 ft

[1.5 to 2.5 (Sec)]



Analysis Method: Automatic

Group: MyWells Well: WARD # 1-19 (acquired on: 02/14/19 13:17:41)

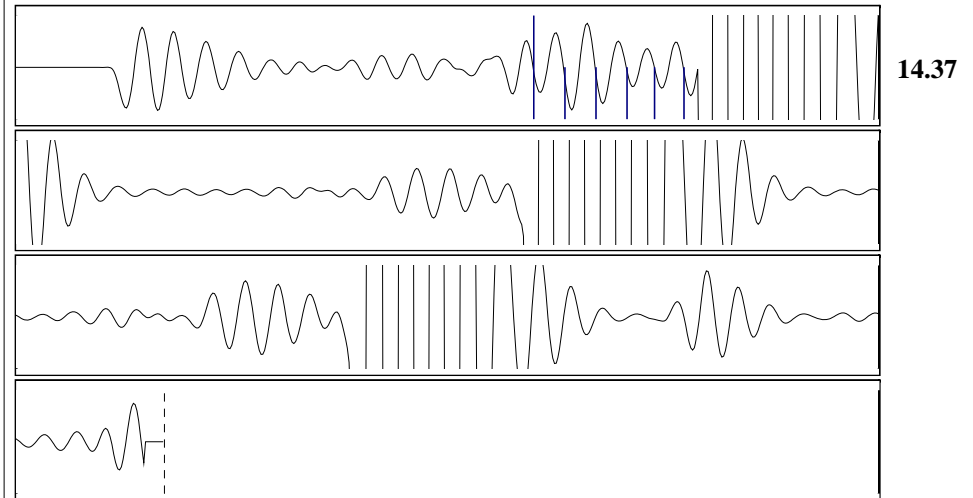


Change in Pressure 0.01 psi PT16027
 Change in Time 0.25 min Range 0 - ? psi

Group: MyWells Well: WARD # 1-19 (acquired on: 02/14/19 13:17:41)

Production		Potential		Casing Pressure		Static	
Current							
Oil	- * -	- * -	BBL/D	-1.1	psi (g)		
Water	- * -	- * -	BBL/D				
Gas	- * -	- * -	Mscf/D				
IPR Method		Vogel		Gas/Liquid Interface Pressure		Oil Column Height	
PBHP/SBHP		- * -		0.25	min	MD	0 ft
Production Efficiency		0.0				Water Column Height	
						MD	- * - ft
Oil	40 deg.API	Liquid Level Depth		Tubing Intake Depth		Static BHP	
Water	1.05 Sp.Gr.H2O	2889.89 ft		- * - ft		- * - psi (g)	
Gas	1.06 Sp.Gr.AIR	Formation Depth					
		4600.00 ft					
Acoustic Velocity		910.92 ft/s					
Acoustic Test							

Group: MyWells Well: WARD # 1-19 (acquired on: 02/14/19 13:17:41)



14.37

Acoustic Velocity 910.92 ft/s Joints counted 5
 Joints Per Second 14.3678 jts/sec Joints to liquid level 91.1638
 Depth to liquid level 2889.89 ft Filter Width 12.4092 16.4092
 Automatic Collar Count Yes Time to 1st Collar 1.2 1.548

Group: MyWells Well: WARD # 1-19 (acquired on: 02/14/19 13:17:41)

Production
 Current Potential
 Oil - * - - * - BBL/D
 Water - * - - * - BBL/D
 Gas - * - - * - Mscf/D

Based on SBHP psi (g)

IPR Method Vogel

Calculation for Continous Removal of Liquids
 Method:

Turner Critical Velocity for Gas Wells

For Tubing ID: 2.441 in

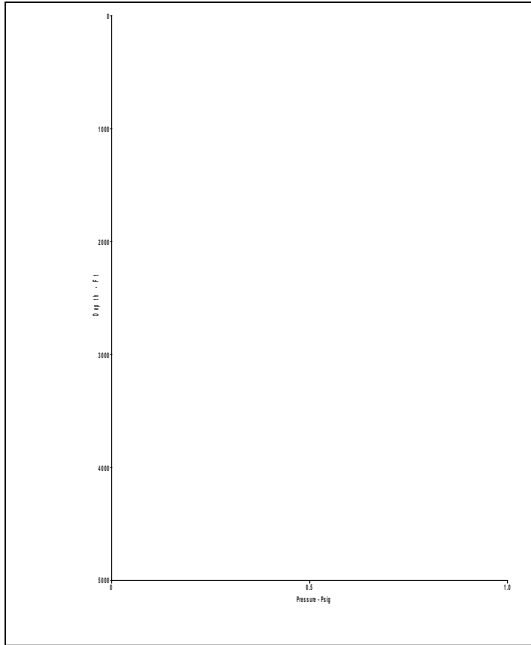
For Water: Mscf/D

For Condensate: Mscf/D

Back Pressure on Formation

Due To Liquid Loading: Mscf/D

Tubing ID in	Gas Rate Mscf/D	Predicted Status
2.441		
1.995		
1.500		
1.250		
1.000		



January 13, 2020

Jose Reyes
American Warrior, Inc.
PO BOX 399
GARDEN CITY, KS 67846-0399

Re: Temporary Abandonment
API 15-109-21417-00-00
WARD 1-19
SW/4 Sec.19-13S-35W
Logan County, Kansas

Dear Jose Reyes:

"Your temporary abandonment (TA) application for the well listed above has been approved. In accordance with K.A.R. 82-3-111 the TA status of this well will expire 01/13/2021.

- * If you return this well to service or plug it, please notify the District Office.
- * If you sell this well you are required to file a Transfer of Operator form, T-1.
- * If the well will remain temporarily abandoned, you must submit a new TA application, CP-111, before 01/13/2021.

You may contact me at the number above if you have questions.

Very truly yours,

RICHARD WILLIAMS"