

KANSAS CORPORATION COMMISSION
OIL & GAS CONSERVATION DIVISION

TEMPORARY ABANDONMENT WELL APPLICATION

OPERATOR: License#
Name:
Address 1:
Address 2:
City: State: Zip:
Contact Person:
Phone:
Contact Person Email:
Field Contact Person:
Field Contact Person Phone:

API No. 15-
Spot Description:
Sec. Twp. S. R.
GPS Location: Lat: Long:
Datum: NAD27 NAD83 WGS84
County: Elevation:
Lease Name: Well #:
Well Type: Oil Gas OG WSW Other:
SWD Permit #: ENHR Permit #:
Gas Storage Permit #:
Spud Date: Date Shut-In:

Table with 7 columns: Conductor, Surface, Production, Intermediate, Liner, Tubing. Rows include Size, Setting Depth, Amount of Cement, Top of Cement, Bottom of Cement.

Casing Fluid Level from Surface: How Determined? Date:
Casing Squeeze(s): to w / sacks of cement, to w / sacks of cement. Date:
Do you have a valid Oil & Gas Lease? Yes No
Depth and Type: Junk in Hole at Tools in Hole at Casing Leaks: Yes No Depth of casing leak(s):
Type Completion: ALT. I ALT. II Depth of: DV Tool: w / sacks of cement Port Collar: w / sack of cement
Packer Type: Size: Inch Set at: Feet
Total Depth: Plug Back Depth: Plug Back Method:

Geological Data:

Table with 4 columns: Formation Name, Formation Top, Formation Base, Completion Information. Rows 1 and 2.

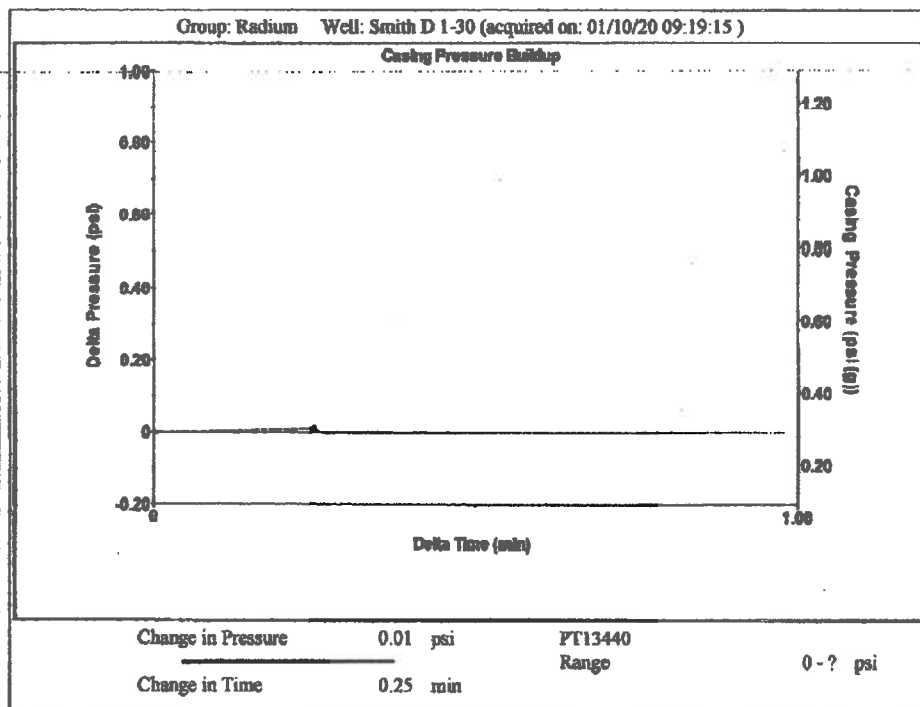
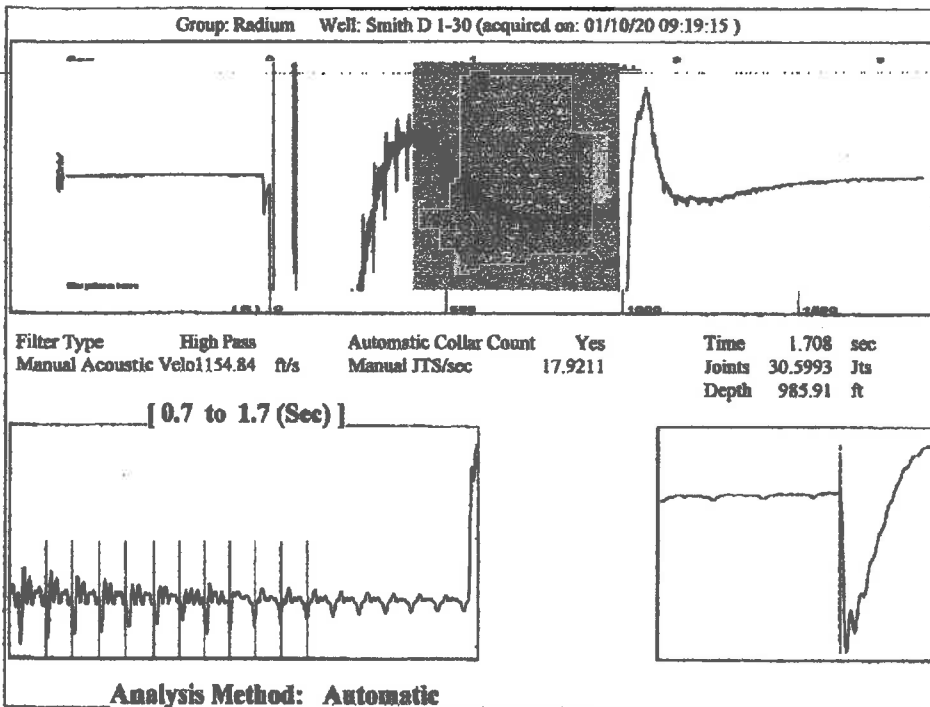
UNDER PENALTY OF PERJURY I HEREBY ATTEST THAT THE INFORMATION CONTAINED HEREIN IS TRUE AND CORRECT TO THE BEST OF MY KNOWLEDGE

Submitted Electronically

Form with fields: Do NOT Write in This Space - KCC USE ONLY, Date Tested, Results, Date Plugged, Date Repaired, Date Put Back in Service, Review Completed by, Comments, TA Approved: Yes Denied, Date.

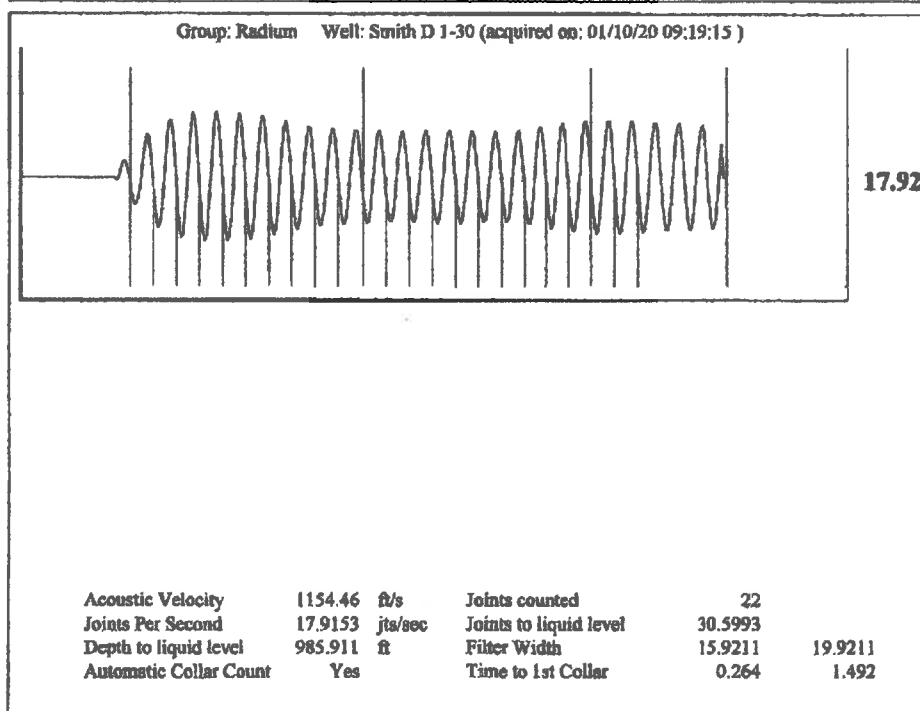
Mail to the Appropriate KCC Conservation Office:

Table with 2 columns: Office Address, Phone. Rows for District Office #1, #2, #3, #4.



Group: Radium Well: Smith D 1-30 (acquired on: 01/10/20 09:19:15)

Production					
Current	Potential	Casing Pressure	0.3 psi (g)	Producing	
Oil -*-	-*- BBL/D	Casing Pressure Buildup	0.009 psi	Annular Gas Flow	0 Mscf/D
Water -*-	-*- BBL/D		0.25 min	% Liquid	100 %
Gas -*-	-*- Mscf/D	Gas/Liquid Interface Pressure	0.7 psi (g)		
IPR Method	Vogel	Liquid Level Depth	985.91 ft	Pump Intake	971.7 psi (g)
PBHP/SBHP	-*-	Pump Intake Depth	3932.00 ft	Producing BHP	924.3 psi (g)
Production Efficiency	0.0	Formation Depth	3779.00 ft	Static BHP	-*- psi (g)
Oil 40 deg API					
Water 1.05 Sp.Gr.H2O					
Gas 0.82 Sp.Gr.AIR					
Acoustic Velocity	1154.46 ft/s				
Formation Submergence					
Total Gaseous Liquid Column HT (TVD)	2946 ft				
Equivalent Gas Free Liquid HT (TVD)	2946 ft				
Acoustic Test					



January 13, 2020

Loveness Mpanje
F. G. Holl Company L.L.C.
9431 E CENTRAL STE 100
WICHITA, KS 67206-2563

Re: Temporary Abandonment
API 15-009-25932-00-03
SMITH D. 1-30
NE/4 Sec.30-20S-15W
Barton County, Kansas

Dear Loveness Mpanje:

"Your temporary abandonment (TA) application for the well listed above has been approved. In accordance with K.A.R. 82-3-111 the TA status of this well will expire 01/13/2021.

- * If you return this well to service or plug it, please notify the District Office.
- * If you sell this well you are required to file a Transfer of Operator form, T-1.
- * If the well will remain temporarily abandoned, you must submit a new TA application, CP-111, before 01/13/2021.

You may contact me at the number above if you have questions.

Very truly yours,

RICHARD WILLIAMS"