

KANSAS CORPORATION COMMISSION
OIL & GAS CONSERVATION DIVISION

TEMPORARY ABANDONMENT WELL APPLICATION

OPERATOR: License#
Name:
Address 1:
Address 2:
City: State: Zip:
Contact Person:
Phone:
Contact Person Email:
Field Contact Person:
Field Contact Person Phone:

API No. 15-
Spot Description:
Sec. Twp. S. R.
GPS Location: Lat: Long:
Datum: NAD27 NAD83 WGS84
County: Elevation:
Lease Name: Well #:
Well Type: Oil Gas OG WSW Other:
SWD Permit #: ENHR Permit #:
Gas Storage Permit #:
Spud Date: Date Shut-In:

Table with 7 columns: Conductor, Surface, Production, Intermediate, Liner, Tubing. Rows include Size, Setting Depth, Amount of Cement, Top of Cement, Bottom of Cement.

Casing Fluid Level from Surface: How Determined? Date:
Casing Squeeze(s): to w / sacks of cement, to w / sacks of cement. Date:
Do you have a valid Oil & Gas Lease? Yes No
Depth and Type: Junk in Hole at Tools in Hole at Casing Leaks: Yes No Depth of casing leak(s):
Type Completion: ALT. I ALT. II Depth of: DV Tool: w / sacks of cement Port Collar: w / sack of cement
Packer Type: Size: Inch Set at: Feet
Total Depth: Plug Back Depth: Plug Back Method:

Geological Data:

Table with 4 columns: Formation Name, Formation Top, Formation Base, Completion Information. Rows 1 and 2.

UNDER PENALTY OF PERJURY I HEREBY ATTEST THAT THE INFORMATION CONTAINED HEREIN IS TRUE AND CORRECT TO THE BEST OF MY KNOWLEDGE

Submitted Electronically

Do NOT Write in This Space - KCC USE ONLY
Date Tested: Results: Date Plugged: Date Repaired: Date Put Back in Service:
Review Completed by: Comments:
TA Approved: Yes Denied Date:

Mail to the Appropriate KCC Conservation Office:

Table with 3 columns: District Office, Address, Phone. Rows for District Office #1, #2, #3, #4.

(((ECHOMETER)))

HENEY 12/30/2019 10:43:11AM

Liquid Level

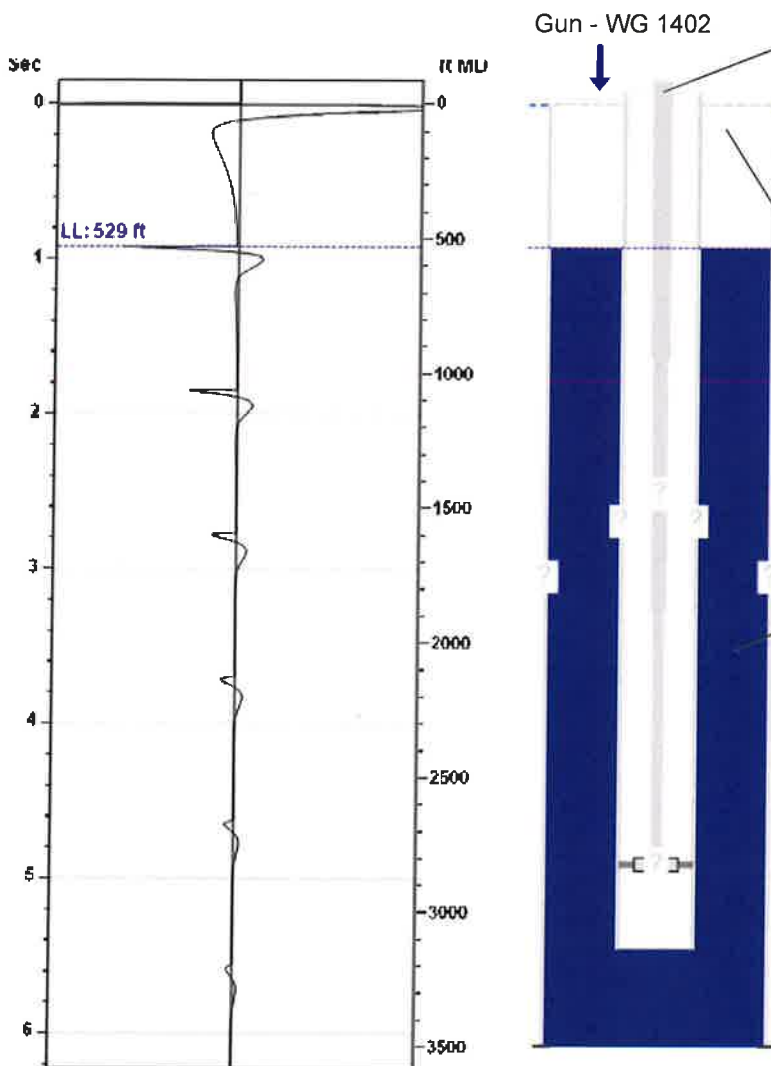
529 ft MD

Fluid Above Pump

\*\* ft TVD

Equivalent Gas Free Above Pump

\*\* ft TVD



**Production**

|                      |          |           |        |
|----------------------|----------|-----------|--------|
| Date Entered         | 12/30/19 |           |        |
|                      | Current  | Potential |        |
| Oil                  | **       | **        | BBL/D  |
| Water                | **       | **        | BBL/D  |
| Gas                  | **       | **        | Mscf/D |
| IPR Method           | Vogel    |           |        |
| PBHP/SBHP            | 1.00     |           |        |
| Producing Efficiency | 0.00%    |           |        |

**Casing Pressure**

|          |              |
|----------|--------------|
| Pressure | 26.3 psi (g) |
|----------|--------------|

**Annular Gas Flow**

|          |           |
|----------|-----------|
| Gas Flow | ** Mscf/D |
|----------|-----------|

**Fluid Properties**

|                     |         |
|---------------------|---------|
| % Liquid Above Pump | 100.00% |
| % Liquid Below Pump | **      |

**Depths**

|                   |         |
|-------------------|---------|
| Pump Intake Depth | 0 ft    |
| Formation Depth   | 3500 ft |

**Wellbore Pressures**

|                   |    |
|-------------------|----|
| PIP               | ** |
| PBHP              | ** |
| SBHP              | ** |
| Gas/Liq Interface | ** |

**Acoustic Velocity**

|                   |                |
|-------------------|----------------|
| Acoustic Velocity | 1150 ft/s      |
| Joints Per Sec.   | 18.14 Jts/sec  |
| Joints To Liquid  | 16.69 Jts      |
| Gas Gravity       | 0.8454 Air = 1 |

Entered From Known Acoustic Velocity

**Casing Pressure Buildup**

**No Pressure Acquired**

|                                    |                |
|------------------------------------|----------------|
| Casing Pressure                    | 26.3 psi (g)   |
| Buildup                            | 0.0 psi (g)    |
| Buildup Time                       | 0 sec          |
| Gas Gravity from Acoustic Velocity | 0.8454 Air = 1 |

**Comments and Recommendations**

Acoustic Test

Echometer Company  
 5001 Ditto Lane  
 Wichita Falls, TX 76302  
 (940) 767-4334  
 info@echometer.com

January 14, 2020

MARILYN DAVIS  
L. D. Drilling, Inc.  
7 SW 26TH AVE  
GREAT BEND, KS 67530-6525

Re: Temporary Abandonment  
API 15-085-20091-00-00  
HENRY TRUST 7  
NW/4 Sec.35-06S-13E  
Jackson County, Kansas

Dear MARILYN DAVIS:

"Your temporary abandonment (TA) application for the well listed above has been approved. In accordance with K.A.R. 82-3-111 the TA status of this well will expire 01/14/2021.

- \* If you return this well to service or plug it, please notify the District Office.
- \* If you sell this well you are required to file a Transfer of Operator form, T-1.
- \* If the well will remain temporarily abandoned, you must submit a new TA application, CP-111, before 01/14/2021.

You may contact me at the number above if you have questions.

Very truly yours,

Levi Short"