

KANSAS CORPORATION COMMISSION
OIL & GAS CONSERVATION DIVISION

TEMPORARY ABANDONMENT WELL APPLICATION

OPERATOR: License#
Name:
Address 1:
Address 2:
City: State: Zip:
Contact Person:
Phone:
Contact Person Email:
Field Contact Person:
Field Contact Person Phone:

API No. 15-
Spot Description:
Sec. Twp. S. R.
GPS Location: Lat: Long:
Datum: NAD27 NAD83 WGS84
County: Elevation:
Lease Name: Well #:
Well Type: Oil Gas OG WSW Other:
SWD Permit #: ENHR Permit #:
Gas Storage Permit #:
Spud Date: Date Shut-In:

Table with 7 columns: Conductor, Surface, Production, Intermediate, Liner, Tubing. Rows include Size, Setting Depth, Amount of Cement, Top of Cement, Bottom of Cement.

Casing Fluid Level from Surface: How Determined? Date:
Casing Squeeze(s): to w / sacks of cement, to w / sacks of cement. Date:
Do you have a valid Oil & Gas Lease? Yes No
Depth and Type: Junk in Hole at Tools in Hole at Casing Leaks: Yes No Depth of casing leak(s):
Type Completion: ALT. I ALT. II Depth of: DV Tool: w / sacks of cement Port Collar: w / sack of cement
Packer Type: Size: Inch Set at: Feet
Total Depth: Plug Back Depth: Plug Back Method:

Geological Data:

Table with 4 columns: Formation Name, Formation Top, Formation Base, Completion Information. Rows 1 and 2.

UNDER PENALTY OF PERJURY I HEREBY ATTEST THAT THE INFORMATION CONTAINED HEREIN IS TRUE AND CORRECT TO THE BEST OF MY KNOWLEDGE

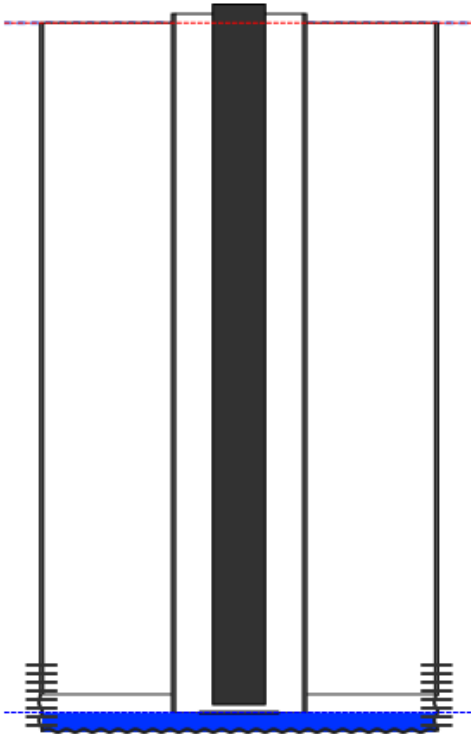
Submitted Electronically

Do NOT Write in This Space - KCC USE ONLY
Date Tested: Results: Date Plugged: Date Repaired: Date Put Back in Service:
Review Completed by: Comments:
TA Approved: Yes Denied Date:

Mail to the Appropriate KCC Conservation Office:

Map of Kansas with 4 numbered districts and corresponding office addresses and phone numbers.

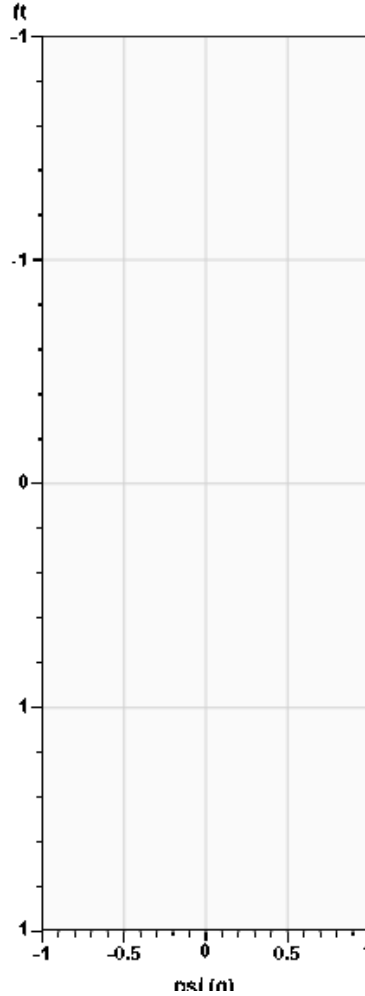
Producing Shot
None selected



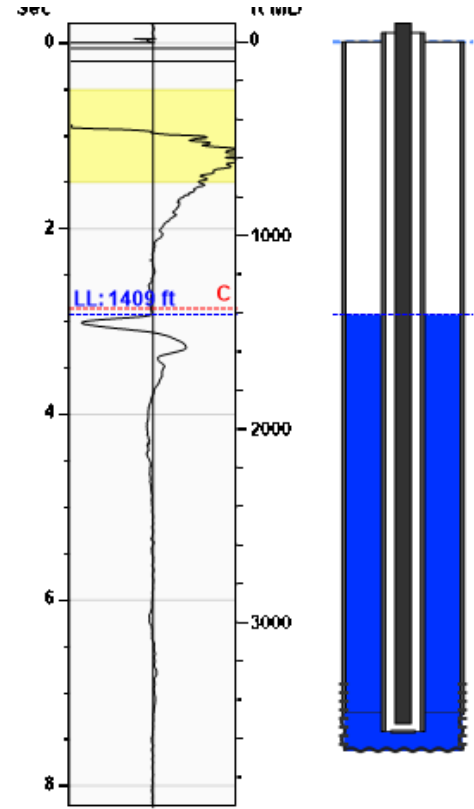
Static Bottomhole Pressure
*. * psi (g) @ *. * ft TVD

Static Liquid Level 1409 ft MD
Oil Column Height *. * ft MD
Water Column Height *. * ft MD

Pressure Profile (TVD)



Static Shot
01/20/2020 11:20:45AM



Casing Pressure Buildup

No Pressure Acquired

Casing Pressure *. * psi (g)
Buildup *. * psi (g)
Buildup Time *. * sec
Gas Gravity

Well Test

Oil *. * BBL/D
Water *. * BBL/D

Comments and Recommendations

Casing Pressure

Pressure *. * psi (g)

Annular Gas Flow

Gas Flow *. * Mscf/D

January 21, 2020

Glenna Lowe
Trans Pacific Oil Corporation
100 S MAIN STE 200
WICHITA, KS 67202-3735

Re: Temporary Abandonment
API 15-051-25595-00-00
SALINE RIVER GRAZING R-2
NW/4 Sec.05-11S-18W
Ellis County, Kansas

Dear Glenna Lowe:

"Your temporary abandonment (TA) application for the well listed above has been approved. In accordance with K.A.R. 82-3-111 the TA status of this well will expire 01/21/2021.

- * If you return this well to service or plug it, please notify the District Office.
- * If you sell this well you are required to file a Transfer of Operator form, T-1.
- * If the well will remain temporarily abandoned, you must submit a new TA application, CP-111, before 01/21/2021.

You may contact me at the number above if you have questions.

Very truly yours,

RICHARD WILLIAMS"