

KANSAS CORPORATION COMMISSION
OIL & GAS CONSERVATION DIVISION

TEMPORARY ABANDONMENT WELL APPLICATION

OPERATOR: License#
Name:
Address 1:
Address 2:
City: State: Zip:
Contact Person:
Phone:
Contact Person Email:
Field Contact Person:
Field Contact Person Phone:

API No. 15-
Spot Description:
Sec. Twp. S. R.
feet from N / S Line of Section
feet from E / W Line of Section
GPS Location: Lat: , Long:
Datum: NAD27 NAD83 WGS84
County: Elevation: GL KB
Lease Name: Well #:
Well Type: (check one) Oil Gas OG WSW Other:
SWD Permit #: ENHR Permit #:
Gas Storage Permit #:
Spud Date: Date Shut-In:

Table with 7 columns: Conductor, Surface, Production, Intermediate, Liner, Tubing. Rows include Size, Setting Depth, Amount of Cement, Top of Cement, Bottom of Cement.

Casing Fluid Level from Surface: How Determined? Date:
Casing Squeeze(s): to w / sacks of cement, to w / sacks of cement. Date:
Do you have a valid Oil & Gas Lease? Yes No
Depth and Type: Junk in Hole at Tools in Hole at Casing Leaks: Yes No Depth of casing leak(s):
Type Completion: ALT. I ALT. II Depth of: DV Tool: w / sacks of cement Port Collar: w / sack of cement
Packer Type: Size: Inch Set at: Feet
Total Depth: Plug Back Depth: Plug Back Method:

Geological Date:

Table with 4 columns: Formation Name, Formation Top, Formation Base, Completion Information. Rows 1 and 2.

UNDER PENALTY OF PERJURY I HEREBY ATTEST THAT THE INFORMATION CONTAINED HEREIN IS TRUE AND CORRECT TO THE BEST OF MY KNOWLEDGE

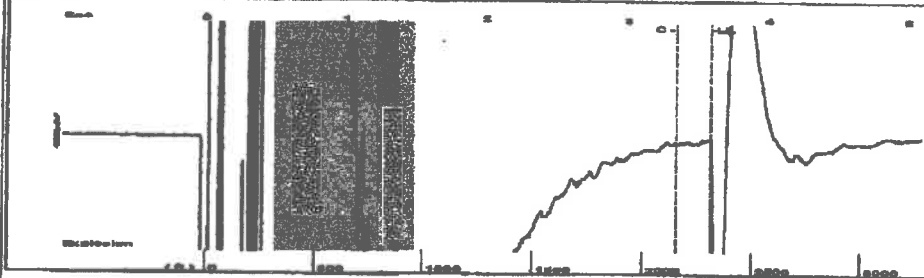
Submitted Electronically

Do NOT Write in This Space - KCC USE ONLY
Date Tested: Results: Date Plugged: Date Repaired: Date Put Back in Service:
Review Completed by: Comments:
TA Approved: Yes Denied Date:

Mail to the Appropriate KCC Conservation Office:

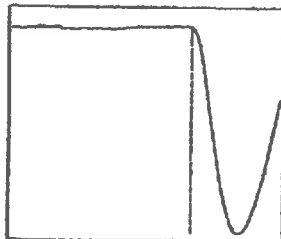
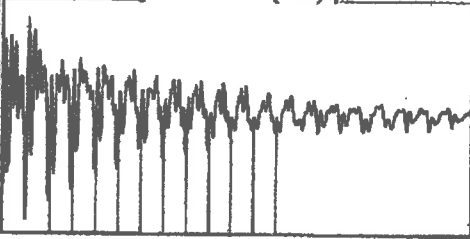
Table with 3 columns: District Office, Address, Phone. Rows for District Office #1, #2, #3, #4.

Group: Belpre Well: Hammeke 1-10 (acquired on: 01/13/20 10:09:21)



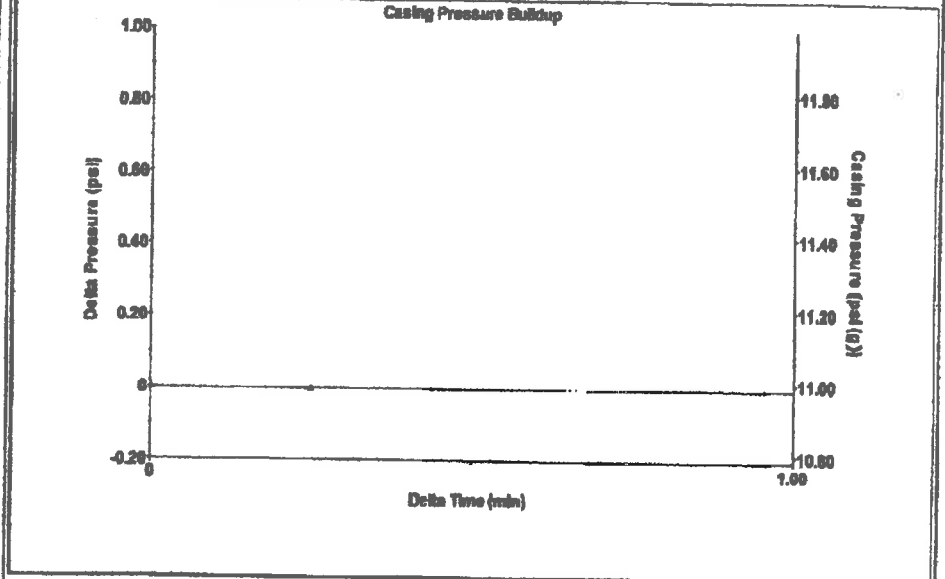
Filter Type High Pass Automatic Collar Count Yes Time 3.593 sec
 Manual Acoustic Vel 1289.67 ft/s Manual JTS/sec 20.6612 Joints 74.0704 Jts
 Depth 2311.74 ft

[0.5 to 1.5 (Sec)]



Analysis Method: Automatic

Group: Belpre Well: Hammeke 1-10 (acquired on: 01/13/20 10:09:21)



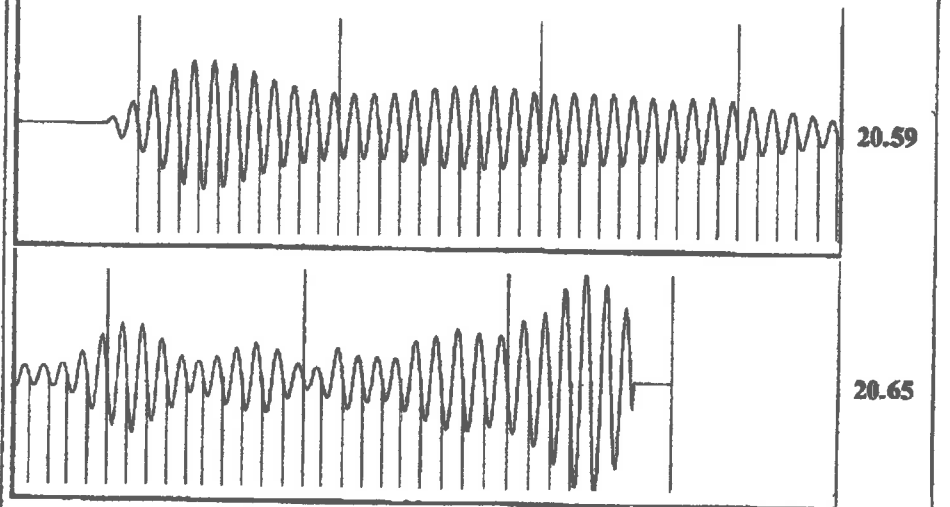
Change in Pressure -0.00 psi PT13440
 Change in Time 0.25 min Range 0 - 7 psi

Group: Belpre Well: Hammeke 1-10 (acquired on: 01/13/20 10:09:21)

Production Current	Potential	Casing Pressure	Producing
Oil -*- BBL/D	-*- BBL/D	11.0 psi (g)	Annular Gas Flow 0 Msc/D
Water -*- BBL/D	-*- BBL/D	Casing Pressure Buildup -0.0 psi	% Liquid 100 %
Gas -*- Mscf/D	-*- Mscf/D	0.25 min	
IPR Method Vogel		Gas/Liquid Interface Pressure 12.5 psi (g)	
PBHP/SBHP -*- -		Liquid Level Depth 2311.74 ft	
Production Efficiency 0.0		Pump Intake Depth 4183.00 ft	
Oil 40 deg.API		Formation Depth 4190.00 ft	
Water 1.05 Sp.Gr.H2O			
Gas 0.70 Sp.Gr.AIR			
Acoustic Velocity 1286.8 ft/s			
Formation Submergence		Pump Intake 636.8 psi (g)	
Total Gaseous Liquid Column HT (TVD) 1871 ft		Producing BHP 640.0 psi (g)	
Equivalent Gas Free Liquid HT (TVD) 1871 ft		Static BHP -*- psi (g)	
Acoustic Test			



Group: Belpre Well: Hammeke 1-10 (acquired on: 01/13/20 10:09:21)



Acoustic Velocity 1286.8 ft/s Joints counted 63
 Joints Per Second 20.6152 jts/sec Joints to liquid level 74.0704
 Depth to liquid level 2311.74 ft Filter Width 18.6612 22.6612
 Automatic Collar Count Yes Time to 1st Collar 0.292 3.348

January 21, 2020

Loveness Mpanje
F. G. Holl Company L.L.C.
9431 E CENTRAL STE 100
WICHITA, KS 67206-2563

Re: Temporary Abandonment
API 15-047-20147-00-00
HAMMEKE 1
SE/4 Sec.10-24S-16W
Edwards County, Kansas

Dear Loveness Mpanje:

"Your temporary abandonment (TA) application for the well listed above has been approved. In accordance with K.A.R. 82-3-111 the TA status of this well will expire 01/21/2021.

- * If you return this well to service or plug it, please notify the District Office.
- * If you sell this well you are required to file a Transfer of Operator form, T-1.
- * If the well will remain temporarily abandoned, you must submit a new TA application, CP-111, before 01/21/2021.

You may contact me at the number above if you have questions.

Very truly yours,

Michael Maier"