

LEGEND:

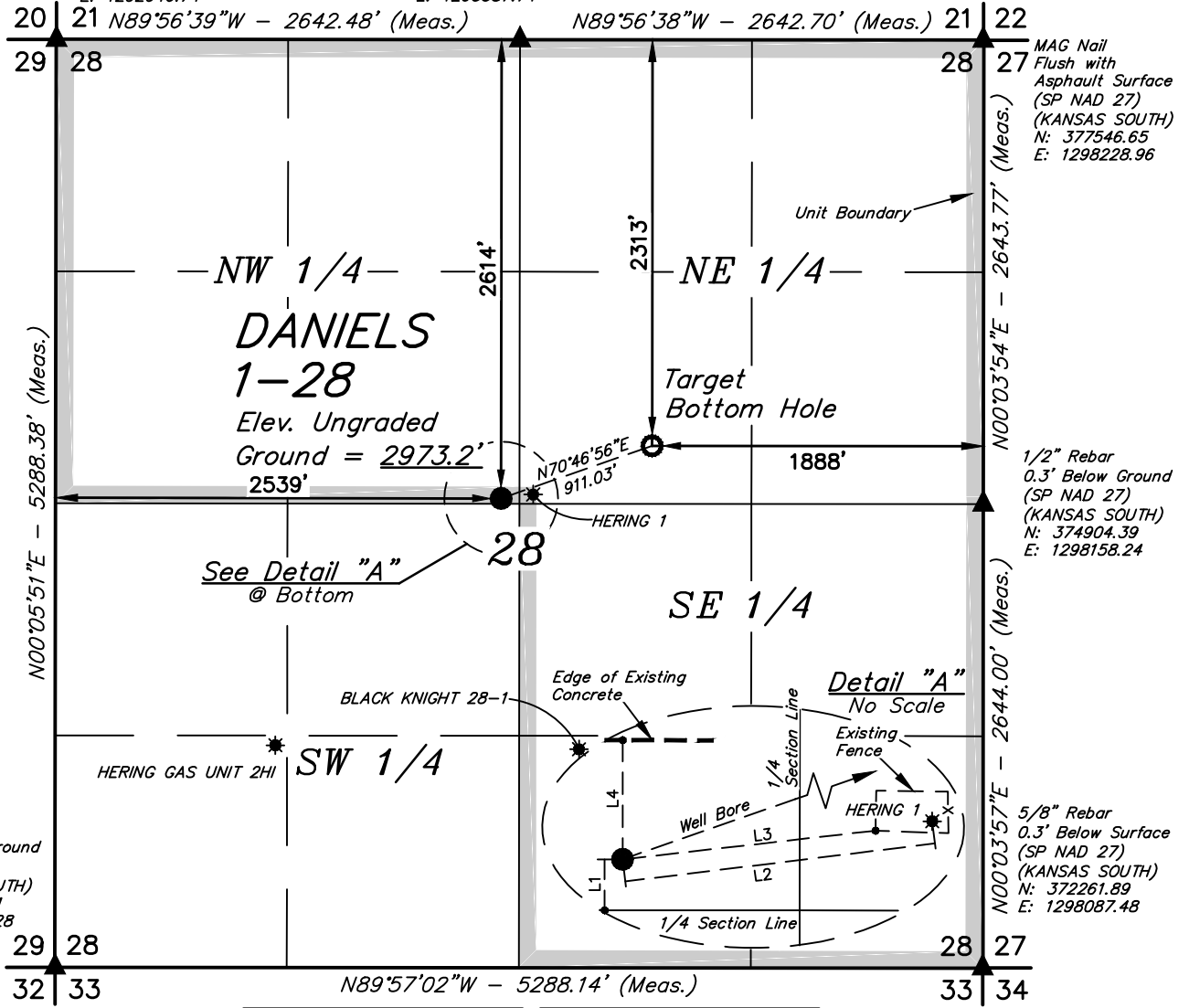
- = PROPOSED WELLHEAD.
- = TARGET BOTTOM HOLE.
- ▲ = SECTION CORNERS LOCATED.
- * = EXISTING WELLS

5/8" Rebar
Flush with Asphalt Surface
(SP NAD 27)
(KANSAS SOUTH)
N: 377687.20
E: 1292946.74

5/8" Rebar
Flush with Asphalt Surface
(SP NAD 27)
(KANSAS SOUTH)
N: 377616.93
E: 1295587.74

T27S, R33W, 6th P.M.

NOTE:
Distances referenced on plat to section lines are perpendicular.



LINE TABLE		
LINE	DIRECTION	LENGTH
L1	S00°03'05"W	30.10'
L2	N83°31'44"E	150.33'

LINE TABLE		
LINE	DIRECTION	LENGTH
L3	N82°59'48"E	184.23'
L4	N00°06'53"E	70.38'

NAD 83 (SURFACE LOCATION) LATITUDE = 37°40'16.84" (37.671344) LONGITUDE = 100°56'06.23" (100.935064)	NAD 83 (TARGET BOTTOM HOLE) LATITUDE = 37°40'19.81" (37.672168) LONGITUDE = 100°55'55.54" (100.932093)
NAD 27 (SURFACE LOCATION) LATITUDE = 37°40'16.75" (37.671320) LONGITUDE = 100°56'04.63" (100.934620)	NAD 27 (TARGET BOTTOM HOLE) LATITUDE = 37°40'19.72" (37.672144) LONGITUDE = 100°55'53.94" (100.931649)
STATE PLANE NAD 83 (KANSAS SOUTH) N: 1687361.01 E: 607635.07	STATE PLANE NAD 83 (KANSAS SOUTH) N: 1687638.69 E: 608502.56
STATE PLANE NAD 27 (KANSAS SOUTH) N: 375007.32 E: 1295412.52	STATE PLANE NAD 27 (KANSAS SOUTH) N: 375285.00 E: 1296280.00

CERTIFICATE
THIS IS TO CERTIFY THAT THE ABOVE PLAT WAS PREPARED FROM FIELD NOTES OF ACTUAL SURVEYS MADE BY ME OR UNDER MY SUPERVISION AND THAT THE SAME ARE TRUE AND CORRECT TO THE BEST OF MY KNOWLEDGE AND BELIEF.

JUSTIN J. BARCROFT
REGISTERED LAND SURVEYOR
REG. NO. 44543
STATE OF KANSAS
2015-19

BASIS OF BEARINGS
BASIS OF BEARINGS IS A G.P.S. OBSERVATION

BASIS OF ELEVATION
ELEVATION 2943.84' WAS DERIVED FROM AN OPUS SOLUTION AT
LAT: 37°33'17.64" LONG: 100°53'21.35" AND HAS A DATUM OF NAVD88.

MERIT ENERGY COMPANY

DANIELS 1-28
2614' FNL 2539' FWL
SE 1/4 NW 1/4, SECTION 28, T27S, R33W, 6th P.M.
HASKELL COUNTY, KANSAS



UELS, LLC
Corporate Office * 85 South 200 East
Vernal, UT 84078 * (435) 789-1017



SURVEYED BY	J.P.	11-27-19	SCALE
DRAWN BY	B.G.	11-27-19	1" = 1000'

WELL LOCATION PLAT

LEGEND:

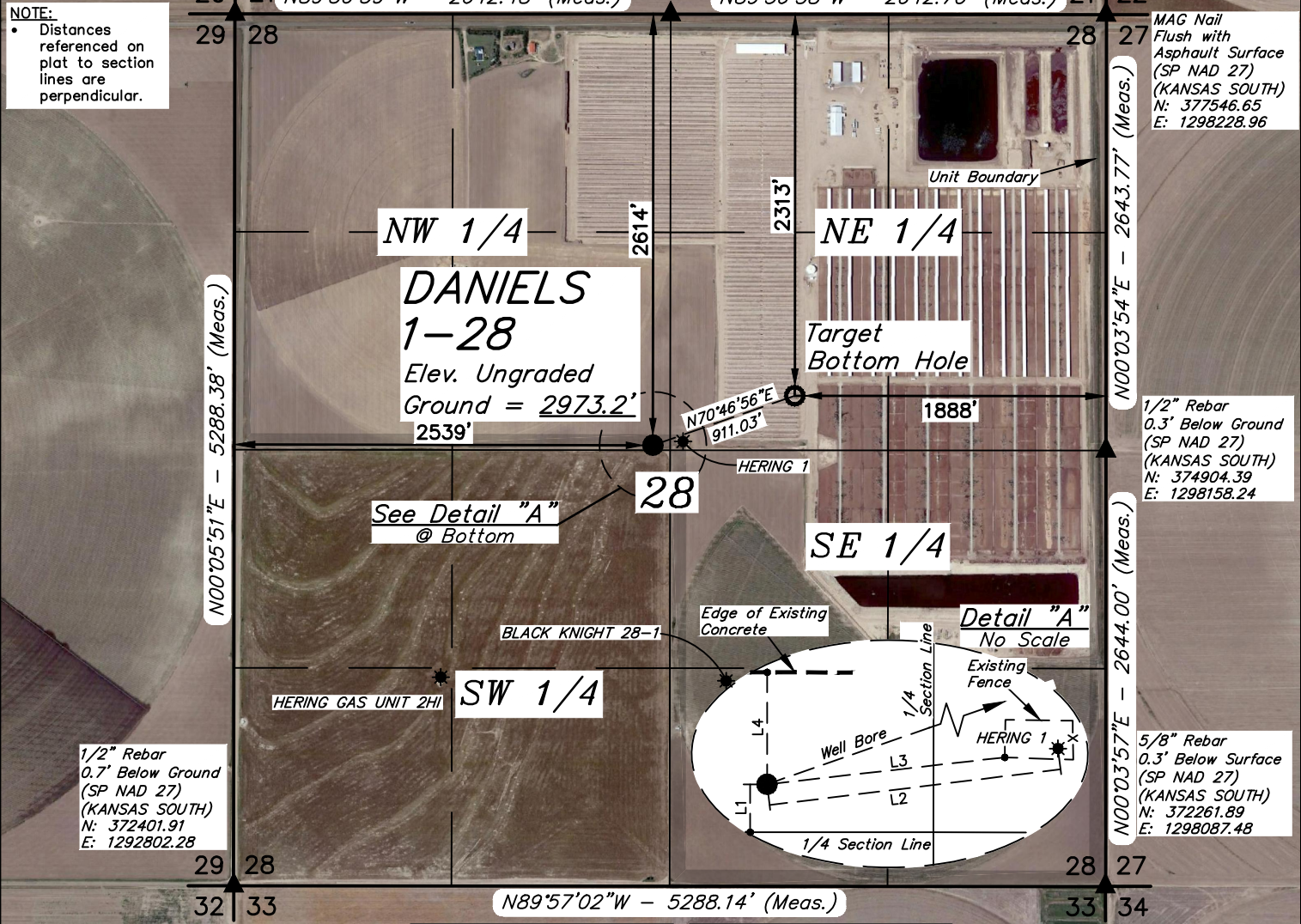
- = PROPOSED WELLHEAD.
- = TARGET BOTTOM HOLE.
- ▲ = SECTION CORNERS LOCATED.
- ★ = EXISTING WELLS

5/8" Rebar
Flush with Asphalt Surface
(SP NAD 27)
(KANSAS SOUTH)
N: 377687.20
E: 1292946.74

5/8" Rebar
Flush with Asphalt Surface
(SP NAD 27)
(KANSAS SOUTH)
N: 377616.93
E: 1295587.74

T27S, R33W, 6th P.M.

NOTE:
Distances referenced on plat to section lines are perpendicular.



LINE TABLE		
LINE	DIRECTION	LENGTH
L1	S00°03'05"W	30.10'
L2	N83°31'44"E	150.33'

LINE TABLE		
LINE	DIRECTION	LENGTH
L3	N82°59'48"E	184.23'
L4	N00°06'53"E	70.38'

NAD 83 (SURFACE LOCATION)	NAD 83 (TARGET BOTTOM HOLE)
LATITUDE = 37°40'16.84" (37.671344)	LATITUDE = 37°40'19.81" (37.672168)
LONGITUDE = 100°56'06.23" (100.935064)	LONGITUDE = 100°55'55.54" (100.932093)
NAD 27 (SURFACE LOCATION)	NAD 27 (TARGET BOTTOM HOLE)
LATITUDE = 37°40'16.75" (37.671320)	LATITUDE = 37°40'19.72" (37.672144)
LONGITUDE = 100°56'04.63" (100.934620)	LONGITUDE = 100°55'53.94" (100.931649)
STATE PLANE NAD 83 (KANSAS SOUTH)	STATE PLANE NAD 83 (KANSAS SOUTH)
N: 1687361.01 E: 607635.07	N: 1687638.69 E: 608502.56
STATE PLANE NAD 27 (KANSAS SOUTH)	STATE PLANE NAD 27 (KANSAS SOUTH)
N: 375007.32 E: 1295412.52	N: 375285.00 E: 1296280.00

CERTIFICATE
THIS IS TO CERTIFY THAT THE ABOVE PLAT WAS PREPARED FROM FIELD NOTES OF ACTUAL SURVEYS MADE BY ME OR UNDER MY SUPERVISION AND THAT THE SAME ARE TRUE AND CORRECT TO THE BEST OF MY KNOWLEDGE AND BELIEF.

ROBERT S. JUSTIN
REGISTERED LAND SURVEYOR
REG. NO. 44854
STATE OF KANSAS
2015-19

BASIS OF BEARINGS
BASIS OF BEARINGS IS A G.P.S. OBSERVATION

BASIS OF ELEVATION
ELEVATION 2943.84' WAS DERIVED FROM AN OPUS SOLUTION AT
LAT: 37°33'17.64" LONG: 100°53'21.35" AND HAS A DATUM OF NAVD88.

UELS, LLC
Corporate Office * 85 South 200 East
Vernal, UT 84078 * (435) 789-1017

MERIT ENERGY COMPANY

DANIELS 1-28
2614' FNL 2539' FWL
SE 1/4 NW 1/4, SECTION 28, T27S, R33W, 6th P.M.
HASKELL COUNTY, KANSAS

SURVEYED BY	J.P.	11-27-19	SCALE
DRAWN BY	B.G.	11-27-19	1" = 1000'

WELL LOCATION PLAT



BEGINNING AT THE INTERSECTION OF US-56 AND N. INMAN STREET IN SUBLETTE, KANSAS PROCEED IN A NORTHERLY DIRECTION ON N. INMAN STREET APPROXIMATELY 0.4 MILES TO THE JUNCTION OF THIS ROAD AND COUNTY ROAD 180 TO THE WEST. TURN LEFT AND PROCEED IN A WESTERLY DIRECTION APPROXIMATELY 1.5 MILES TO THE JUNCTION OF THIS ROAD AND US-160 TO THE NORTH. TURN RIGHT AND PROCEED IN A NORTHERLY DIRECTION APPROXIMATELY 13.1 MILES TO THE JUNCTION OF THIS ROAD AND COUNTY ROAD 50 TO THE WEST. TURN LEFT AND PROCEED IN A WESTERLY DIRECTION APPROXIMATELY 4.0 MILES TO THE JUNCTION OF THIS ROAD AND COUNTY ROAD II TO THE SOUTH. TURN LEFT AND PROCEED IN A SOUTHERLY DIRECTION APPROXIMATELY 0.5 MILES TO THE JUNCTION OF THIS ROAD AND THE LEASE ROAD TO THE EAST. TURN LEFT AND PROCEED IN AN EASTERLY DIRECTION APPROXIMATELY 0.5 MILES. FROM THIS POINT, THE PROPOSED WELL LOCATION IS APPROXIMATELY 16' NORTHERLY.

TOTAL DISTANCE FROM SUBLETTE, KANSAS TO THE PROPOSED WELL LOCATION IS APPROXIMATELY 20.0 MILES.

MERIT ENERGY COMPANY

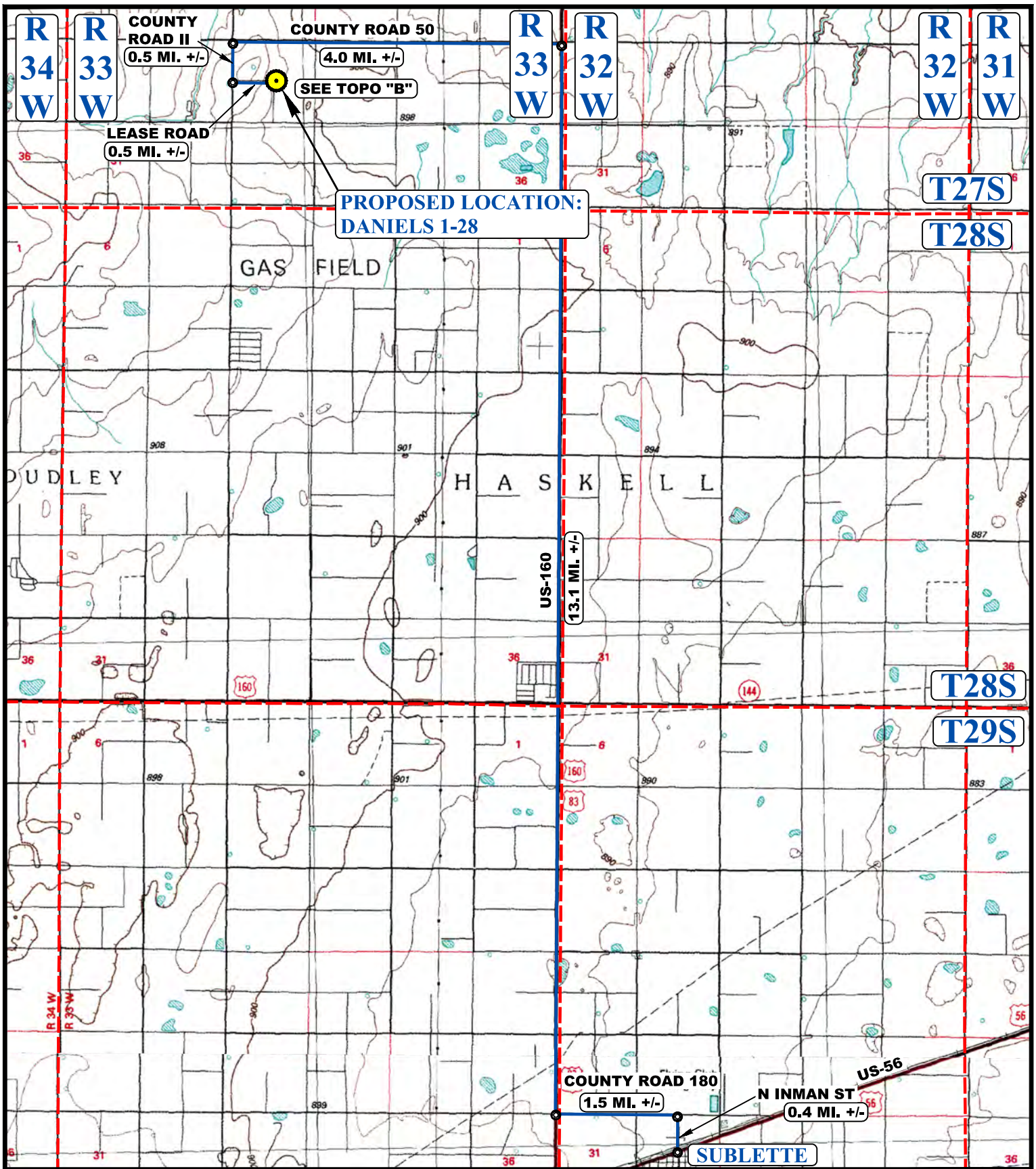
**DANIELS 1-28
2614' FNL 2539' FWL
SE 1/4 NW 1/4, SECTION 28, T27S, R33W, 6th P.M.
HASKELL COUNTY, KANSAS**

SURVEYED BY	J.P.	11-27-19	
DRAWN BY	J.L.G.	11-27-19	
ROAD DESCRIPTION			

UELS, LLC

Corporate Office * 85 South 200 East
Vernal, UT 84078 * (435) 789-1017





**PROPOSED LOCATION:
DANIELS 1-28**

LEGEND:

 **PROPOSED LOCATION**



MERIT ENERGY COMPANY

DANIELS 1-28
 2614' FNL 2539' FWL
 SE 1/4 NW 1/4, SECTION 28, T27S, R33W, 6th P.M.
 HASKELL COUNTY, KANSAS

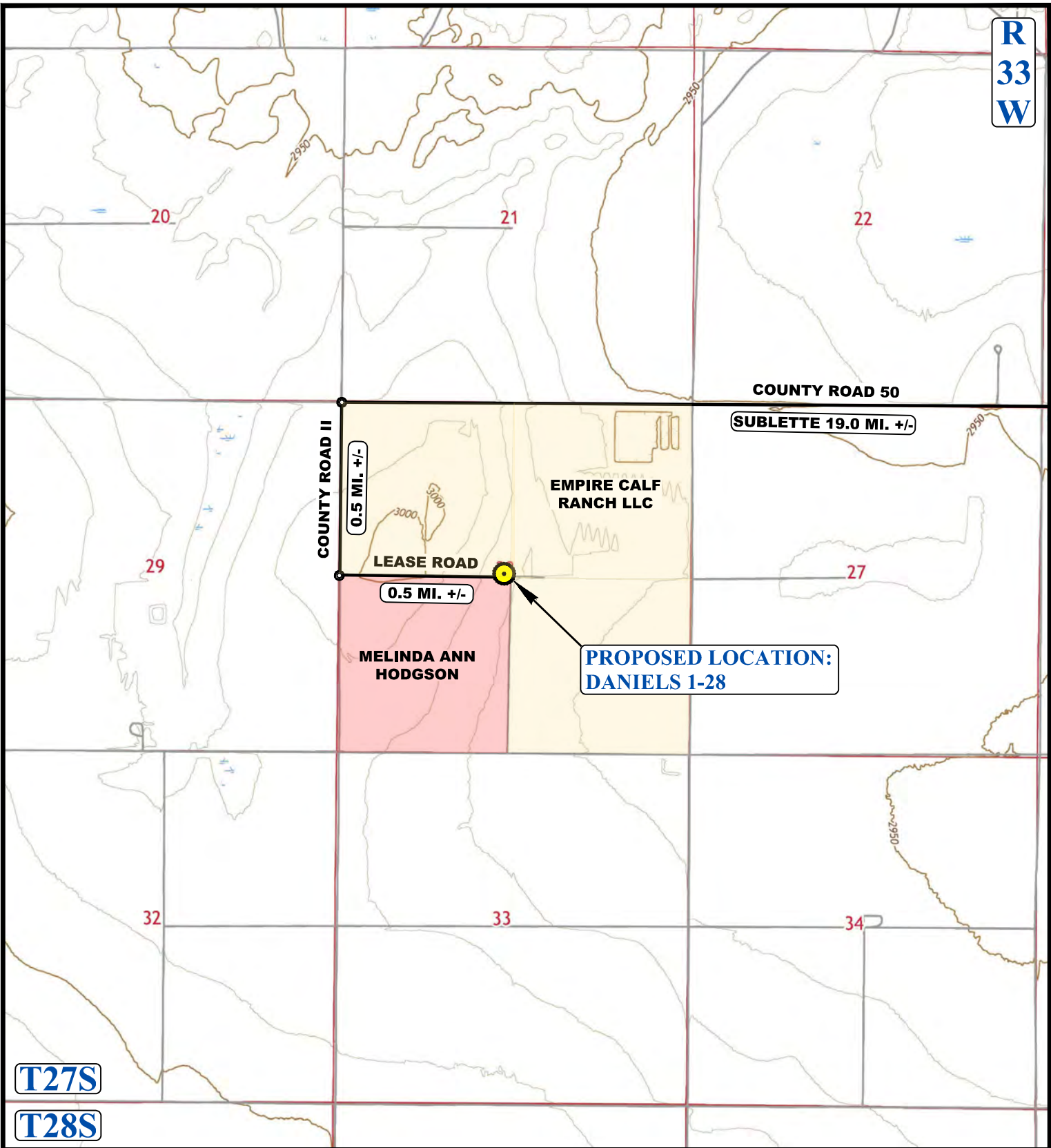
SURVEYED BY	J.P.	11-27-19	SCALE
DRAWN BY	J.L.G.	11-27-19	1 : 100,000
ACCESS ROAD MAP			TOPO A

UELS, LLC

Corporate Office * 85 South 200 East
 Vernal, UT 84078 * (435) 789-1017



R
33
W



NOTE: PARCEL DATA SHOWN HAS BEEN OBTAINED FROM VARIOUS SOURCES AND SHOULD BE USED FOR MAPPING, GRAPHIC AND PLANNING PURPOSES ONLY. NO WARRANTY IS MADE BY UINTAH ENGINEERING AND LAND SURVEYING (UELS) FOR ACCURACY OF THE PARCEL DATA.

LEGEND:

— EXISTING ROAD



MERIT ENERGY COMPANY

DANIELS 1-28
 2614' FNL 2539' FWL
 SE 1/4 NW 1/4, SECTION 28, T27S, R33W, 6th P.M.
 HASKELL COUNTY, KANSAS

SURVEYED BY	J.P.	11-27-19	SCALE
DRAWN BY	J.L.G.	11-27-19	1 : 24,000
ACCESS ROAD MAP			TOPO B



UELS, LLC
 Corporate Office * 85 South 200 East
 Vernal, UT 84078 * (435) 789-1017